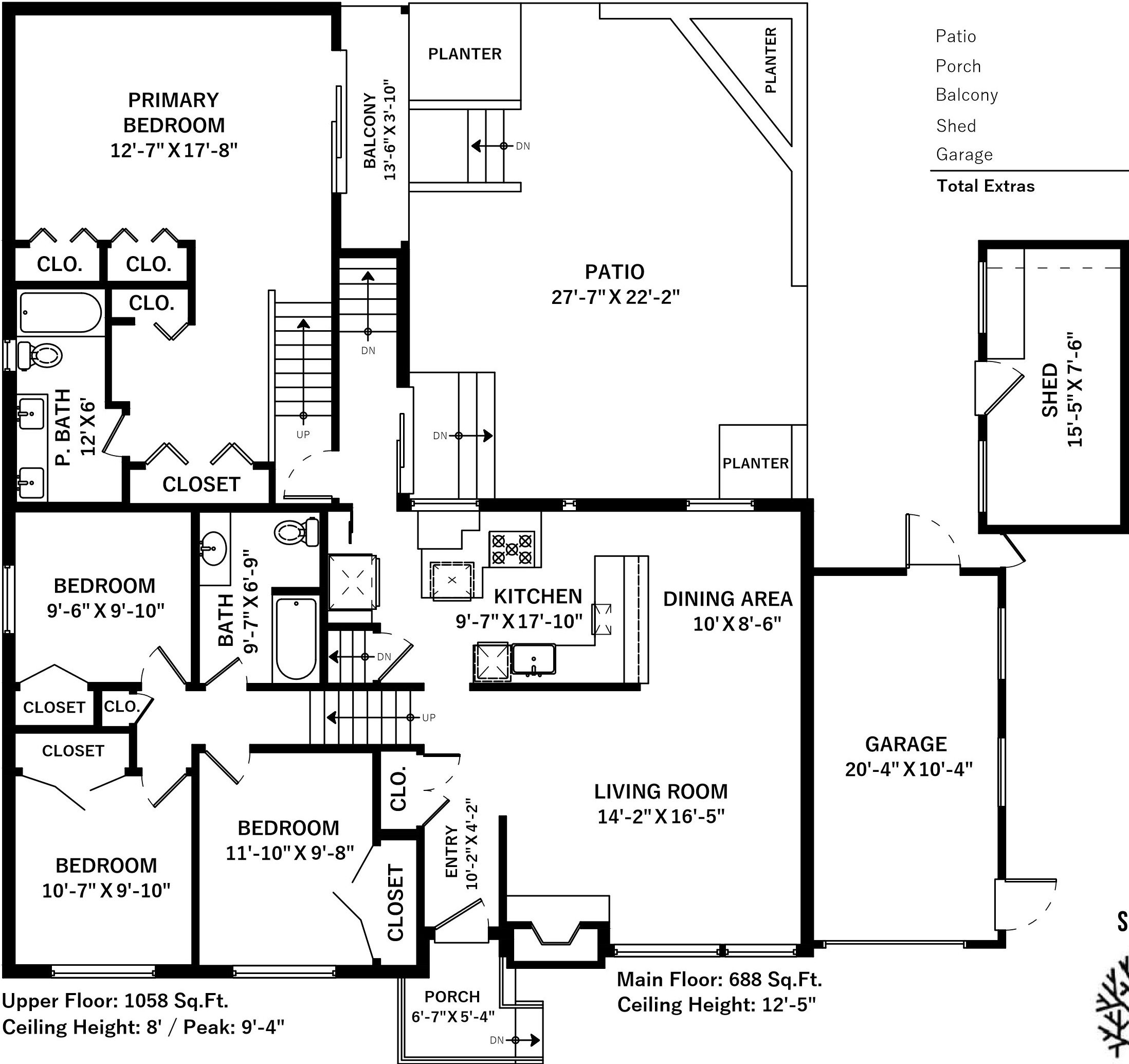


# 1620 BLAIR AVE

VICTORIA, BC

Main Floor	688 SQ.FT.
Upper Floor	1058 SQ.FT.
Lower Floor	1033 SQ.FT.
<b>Total</b>	<b>2779 SQ.FT.</b>

Patio	479 SQ.FT.
Porch	41 SQ.FT.
Balcony	51 SQ.FT.
Shed	136 SQ.FT.
Garage	226 SQ.FT.
<b>Total Extras</b>	<b>933 SQ.FT.</b>



Upper Floor: 1058 Sq.Ft.  
Ceiling Height: 8' / Peak: 9'-4"

Main Floor: 688 Sq.Ft.  
Ceiling Height: 12'-5"



WWW.RICKHUMPHRIES.COM

SUPPLIED BY:



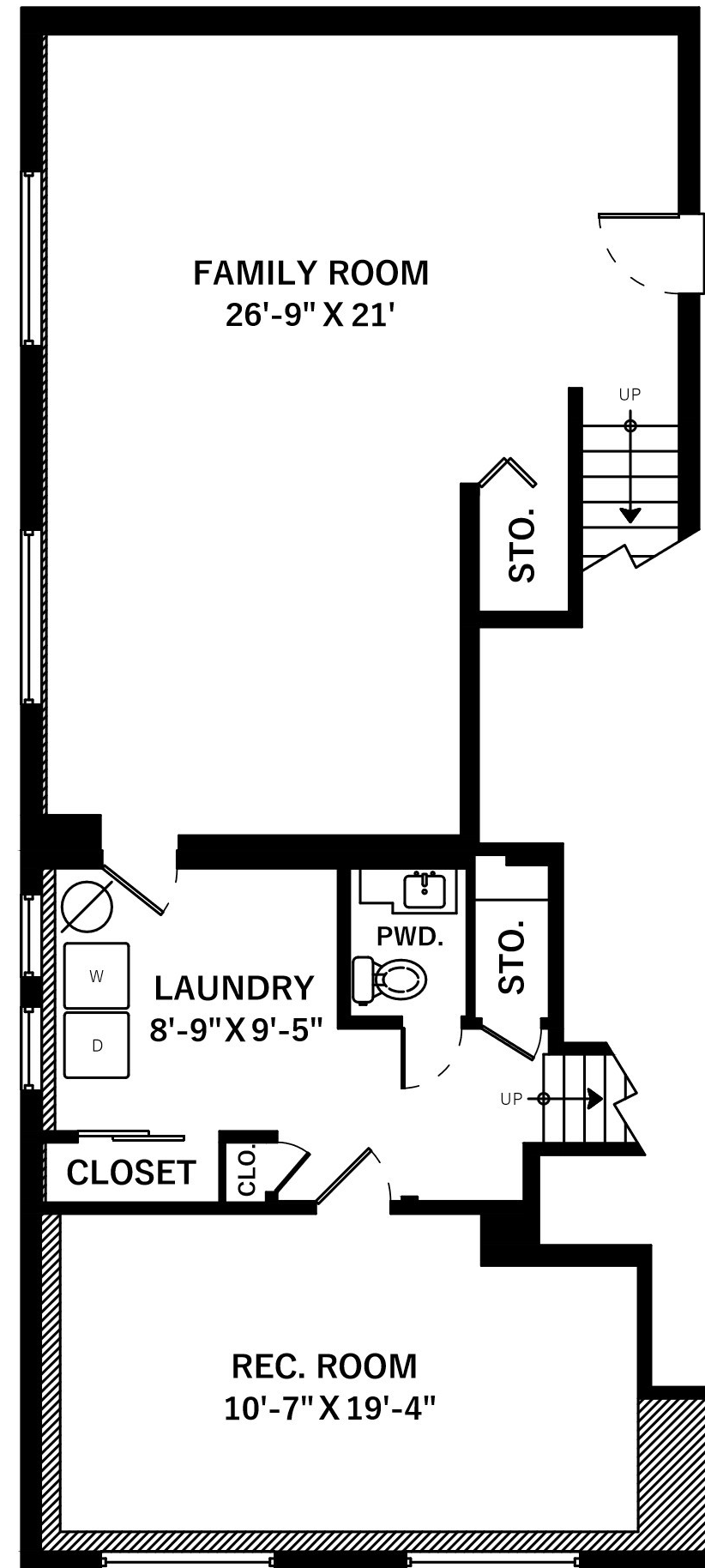
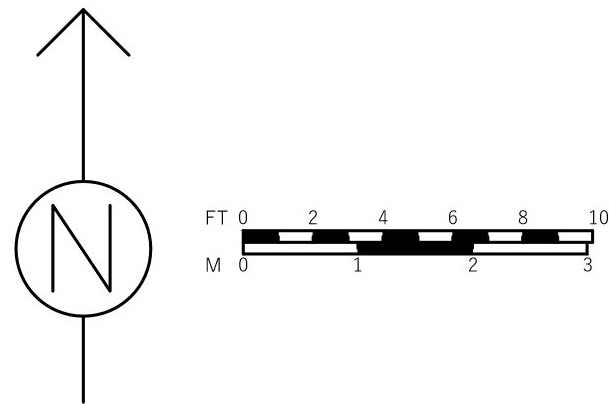
Floor plan not suitable for architectural/construction purposes. All information furnished is from sources deemed reliable however no warranty or representation is made to the accuracy thereof. If important, buyer to verify.

# 1620 BLAIR AVE

VICTORIA, BC

Main Floor	688 SQ.FT.
Upper Floor	1058 SQ.FT.
Lower Floor	1033 SQ.FT.
<b>Total</b>	<b>2779 SQ.FT.</b>

Patio	479 SQ.FT.
Porch	41 SQ.FT.
Balcony	51 SQ.FT.
Shed	136 SQ.FT.
Garage	226 SQ.FT.
<b>Total Extras</b>	<b>933 SQ.FT.</b>



Lower Floor: 1033 Sq.Ft.  
Ceiling Height: 8'



[WWW.RICKHUMPHRIES.COM](http://www.rickhumphries.com)

SUPPLIED BY:

