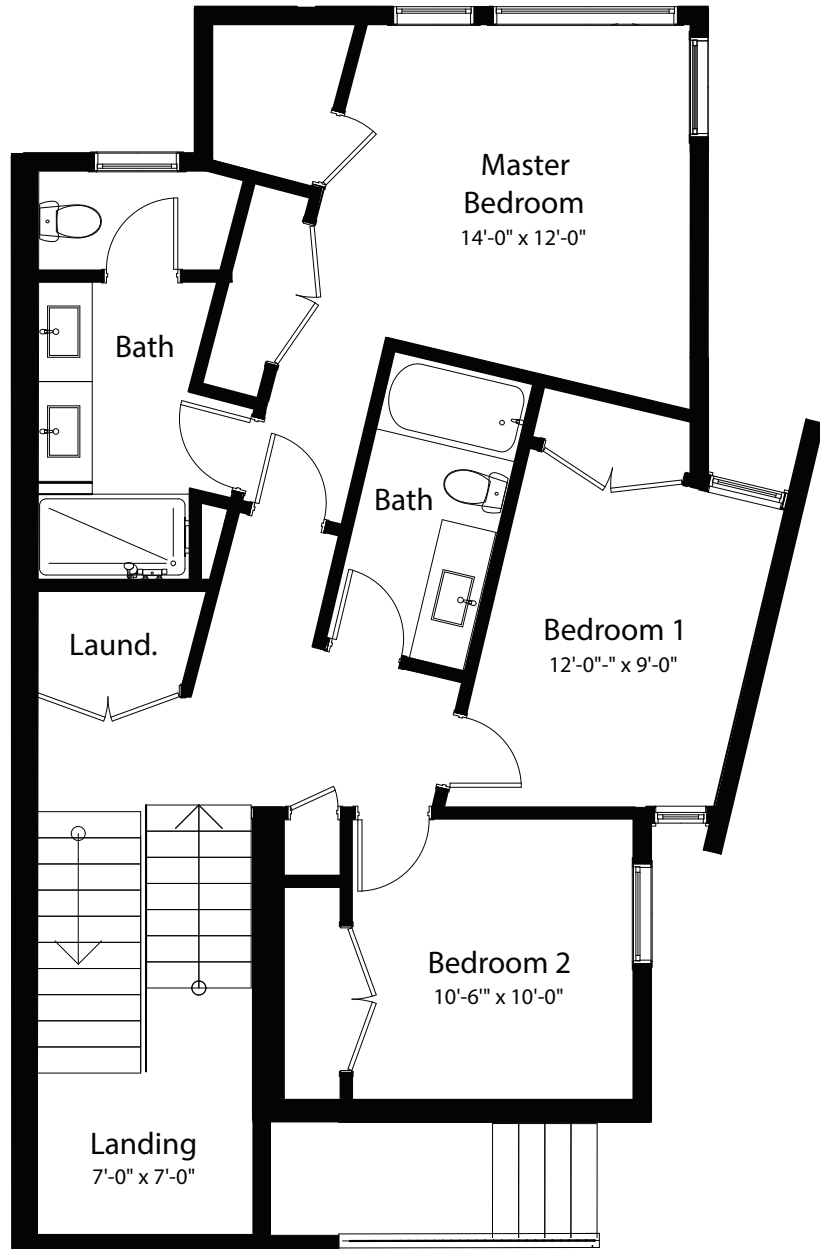




## EAST CHALET (2-STOREY) - UNIT 59

v3.2G: 2<sup>nd</sup> Level, 3 Bdrm, 2.5 Bath, N.Balcony



### GROSS SQUARE FOOTAGE\*

Living Area	1934
Garage/Storage	262
Deck Area	112
<b>Total</b>	<b>2308</b>

*for a Life in Balance*

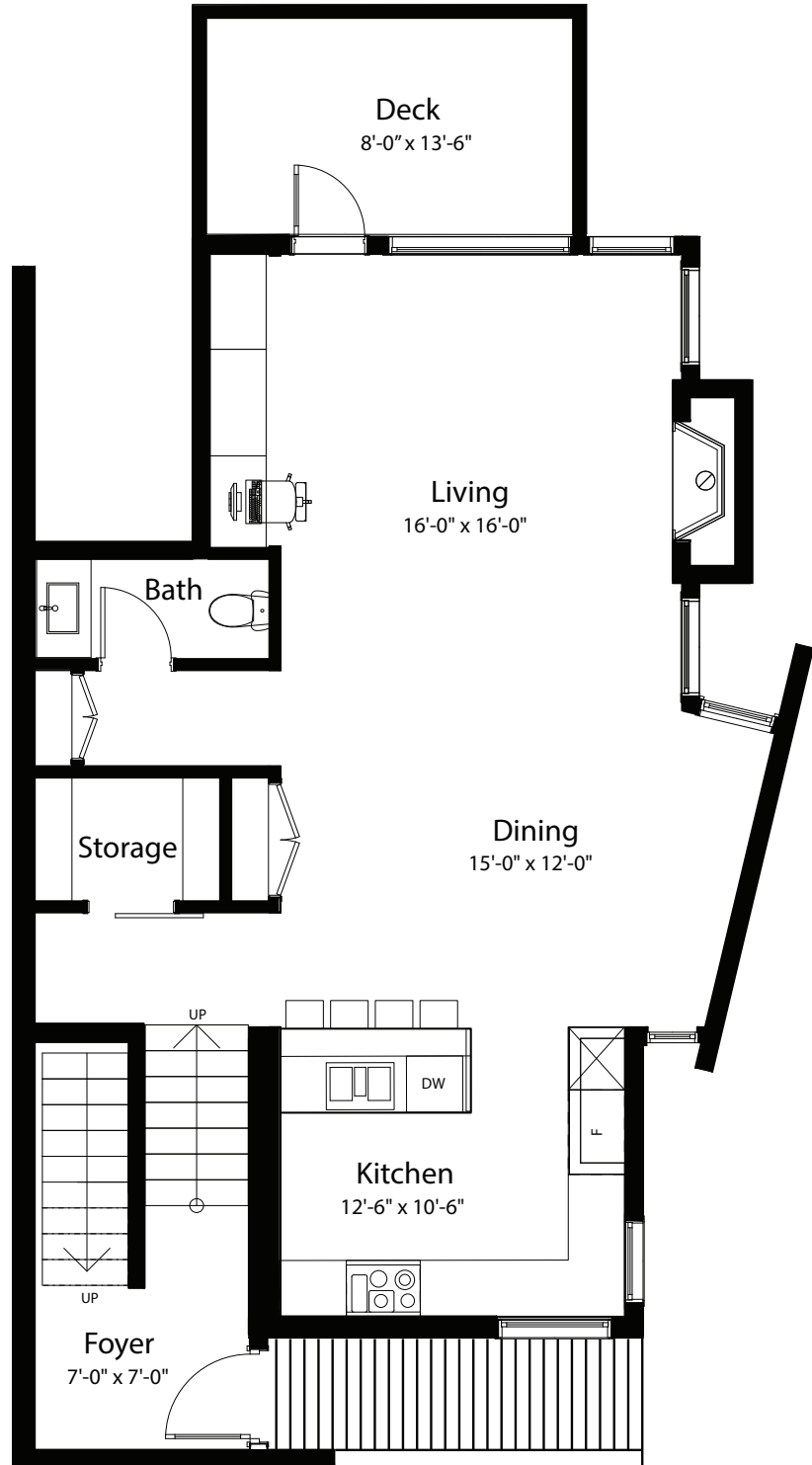


The above is for information purposes only and is not a true representation of the final project. The Developer reserves the right to alter, change, or substitute appliances, lighting, and interior finishes and materials with alternatives that are of like or similar quality. Any indication of dimensions is for information purposes only and may vary at construction and installation - at the developers discretion. The Developer reserves the unfettered right to make changes to the floor plans, project design, specifications & interiors, and exterior landscaping. \*FINAL DIMENSIONS, SQUARE FOOTAGE ESTIMATES, INDICATED MEASUREMENTS, FLOOR PLANS AND PROJECT CONFIGURATION MAY VARY, AND MAY VARY FROM OTHER MEASUREMENT STANDARDS SUCH AS RECA'S RMS.



## EAST CHALET (2-STOREY) - UNIT 59

**v3.2G:** 2<sup>nd</sup> Level, 3 Bdrm, 2.5 Bath, N.Balcony



### GROSS SQUARE FOOTAGE\*

Living Area	1934
Garage/Storage	262
Deck Area	112
<b>Total</b>	<b>2308</b>

*for a Life in Balance*

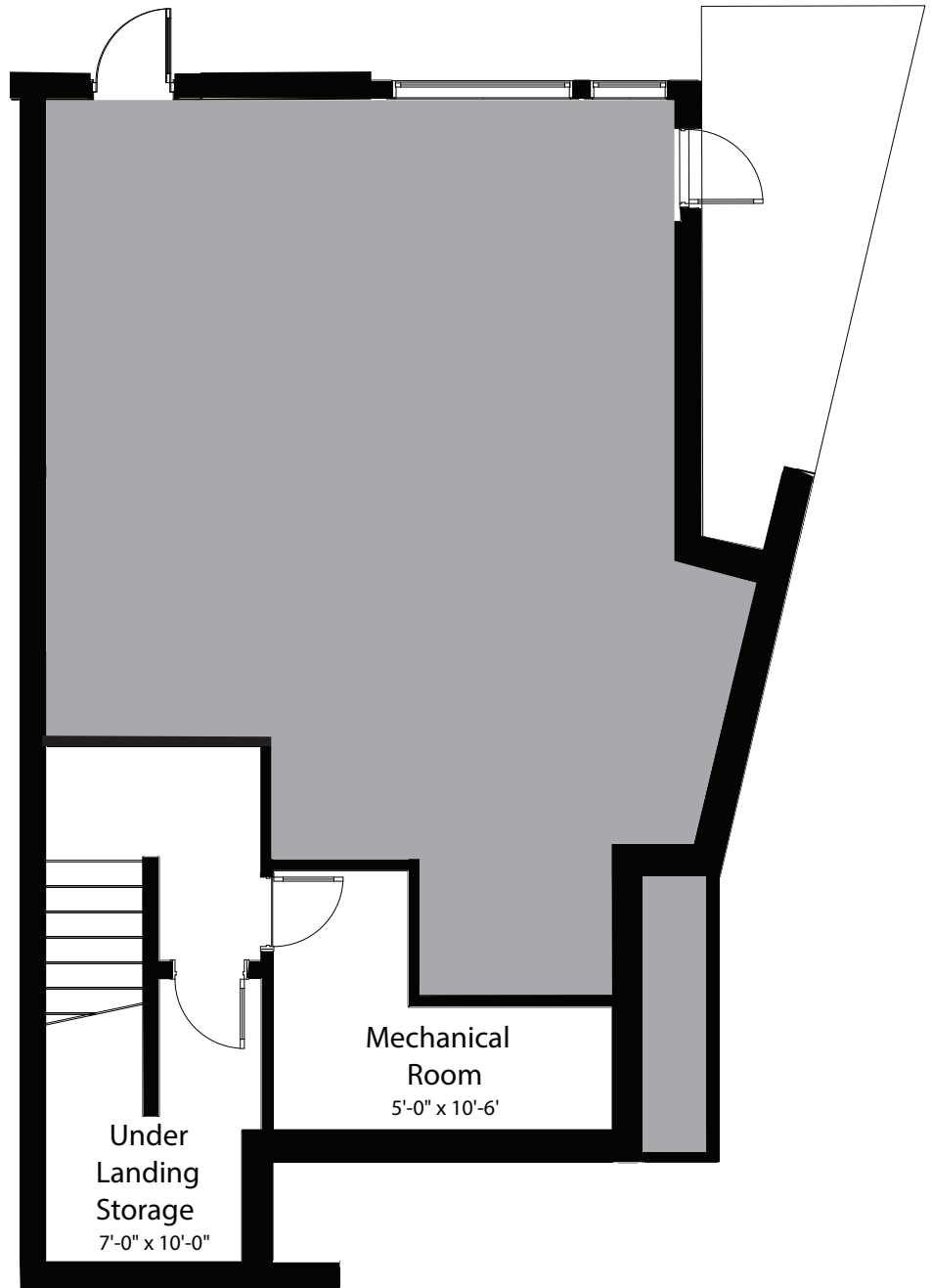


The above is for information purposes only and is not a true representation of the final project. The Developer reserves the right to alter, change, or substitute appliances, lighting, and interior finishes and materials with alternatives that are of like or similar quality. Any indication of dimensions is for information purposes only and may vary at construction and installation - at the developers discretion. The Developer reserves the unfettered right to make changes to the floor plans, project design, specifications & interiors, and exterior landscaping. \*FINAL DIMENSIONS, SQUARE FOOTAGE ESTIMATES, INDICATED MEASUREMENTS, FLOOR PLANS AND PROJECT CONFIGURATION MAY VARY, AND MAY VARY FROM OTHER MEASUREMENT STANDARDS SUCH AS RECA'S RMS.



## EAST CHALET (2-STOREY) - UNIT 59

**v3.2G:** 2<sup>nd</sup> Level, 3 Bdrm, 2.5 Bath, N.Balcony



### GROSS SQUARE FOOTAGE\*

Living Area	1934
Garage/Storage	262
Deck Area	112
<b>Total</b>	<b>2308</b>

*for a Life in Balance*

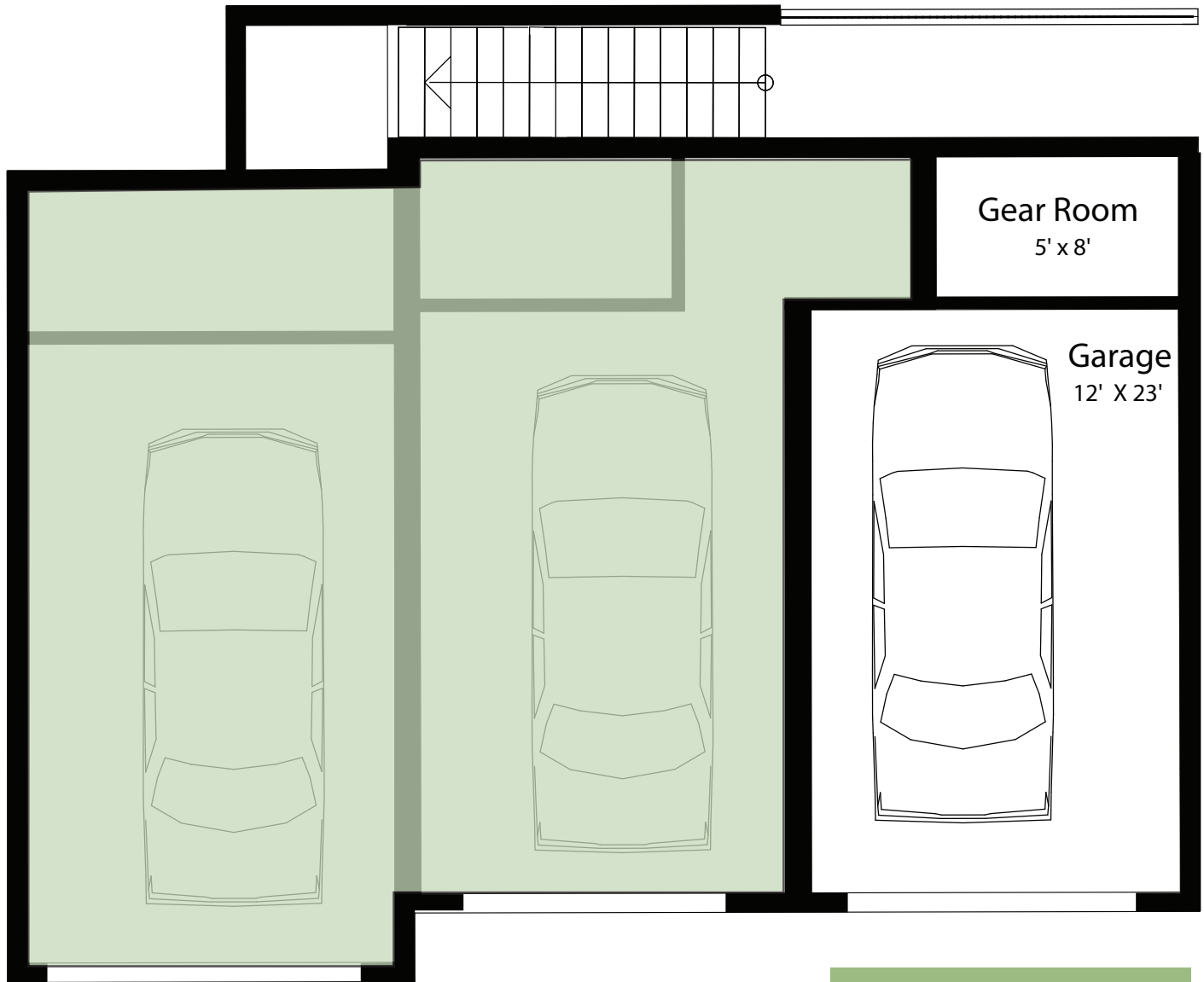


The above is for information purposes only and is not a true representation of the final project. The Developer reserves the right to alter, change, or substitute appliances, lighting, and interior finishes and materials with alternatives that are of like or similar quality. Any indication of dimensions is for information purposes only and may vary at construction and installation - at the developers discretion. The Developer reserves the unfettered right to make changes to the floor plans, project design, specifications & interiors, and exterior landscaping. \*FINAL DIMENSIONS, SQUARE FOOTAGE ESTIMATES, INDICATED MEASUREMENTS, FLOOR PLANS AND PROJECT CONFIGURATION MAY VARY, AND MAY VARY FROM OTHER MEASUREMENT STANDARDS SUCH AS RECA'S RMS.



## EAST CHALET (2-STOREY) - UNIT 59

**OVERSIZED GARAGE:** Single Garage + Tandem Stall



GROSS SQUARE FOOTAGE*	
Living Area	1934
Garage/Storage	262
Deck Area	112
<b>Total</b>	<b>2308</b>

*for a Life in Balance*



The above is for information purposes only and is not a true representation of the final project. The Developer reserves the right to alter, change, or substitute appliances, lighting, and interior finishes and materials with alternatives that are of like or similar quality. Any indication of dimensions is for information purposes only and may vary at construction and installation - at the developers discretion. The Developer reserves the unfettered right to make changes to the floor plans, project design, specifications & interiors, and exterior landscaping. \*FINAL DIMENSIONS, SQUARE FOOTAGE ESTIMATES, INDICATED MEASUREMENTS, FLOOR PLANS AND PROJECT CONFIGURATION MAY VARY, AND MAY VARY FROM OTHER MEASUREMENT STANDARDS SUCH AS RECA'S RMS.