

THE VILLAS AT SILVERTIP

BY ROCKWOOD CUSTOM HOMES

MAIN LEVEL

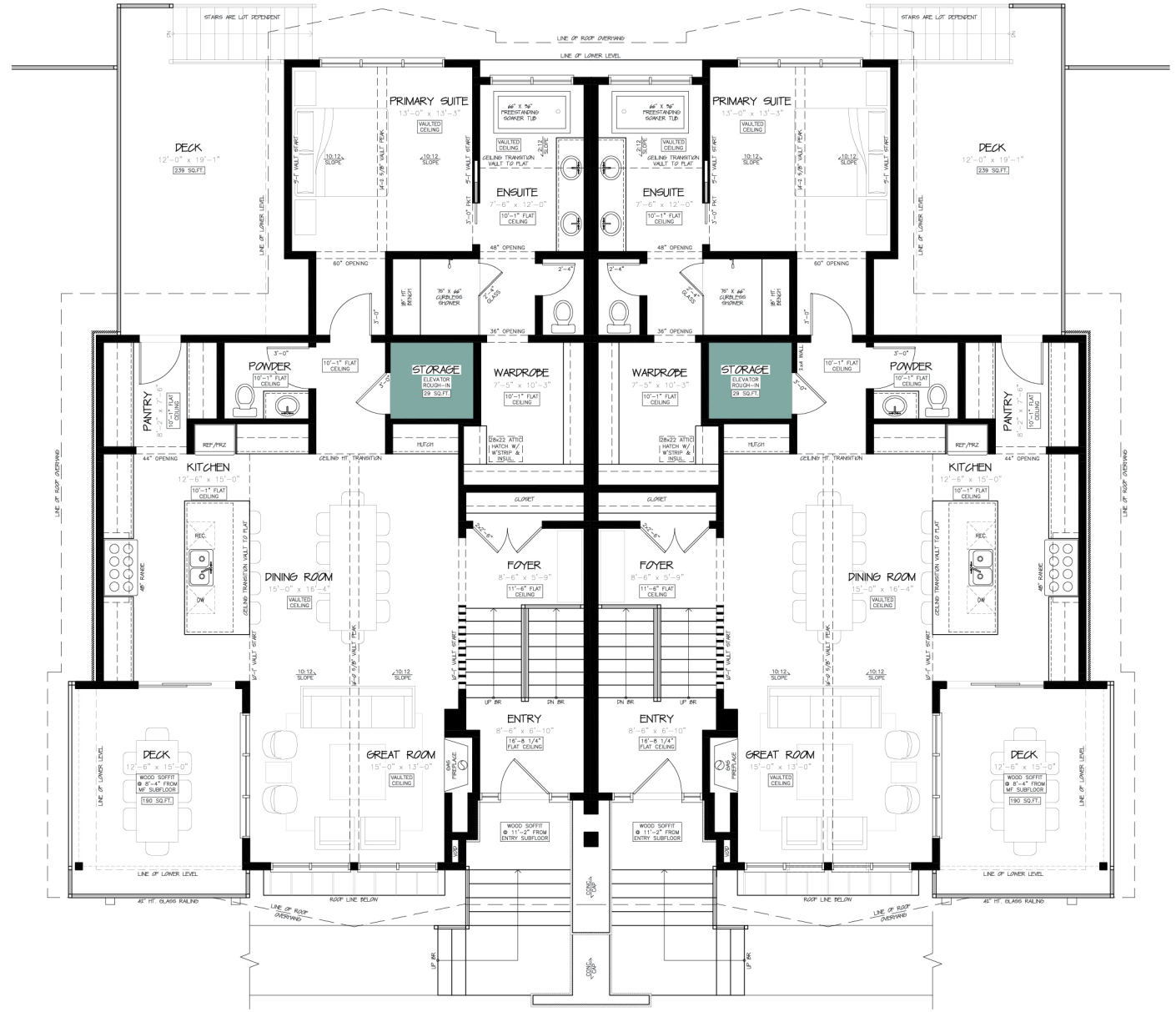
THE THREE SISTERS BUNGALOWS

Faith, Hope and Charity - Elevator

TOTAL DEVELOPED AREA	2,899 SQ. FT.
MAIN LEVEL	1,594 SQ. FT.
LOWER LEVEL	1,305 SQ. FT.

DIMENSIONS

Great Room:	15'-0" x 13'-0"
Dining Room:	15'-0" x 16'-4"
Kitchen:	12'-6" x 15'-0"
Pantry:	12'-3" x 5'-6"
Entry:	8'-6" x 6'-10"
Foyer:	8'-6" x 5'-9"
Covered Deck:	12'-6" x 15'-0"
BBQ Deck:	12'-0" x 19'-1"
Primary Suite:	13'-0" x 13'-3"
Ensuite:	7'-6" x 12'-0"
Wardrobe:	7'-5" x 10'-3"
Double Garage:	22'-4" x 19'-1"
Mud Room/Laundry:	7'-7" x 12'-8"
Bedroom 2:	11'-8" x 12'-4"
Bedroom 3:	11'-0" x 11'-0"
Family Room:	13'-0" x 13'-0"
Games Area:	14'-0" x 9'-6"



SILVERTIP
CANMORE * ALBERTA

Disclaimer: This blackline is only to convey the floor plan and current layout of floor template within the home. Structural elements, building heights and final as-built dimensions are subject to change slightly based on grading, soil, water table, elevation, architectural &/or field verification.

THE VILLAS AT SILVERTIP

BY ROCKWOOD CUSTOM HOMES

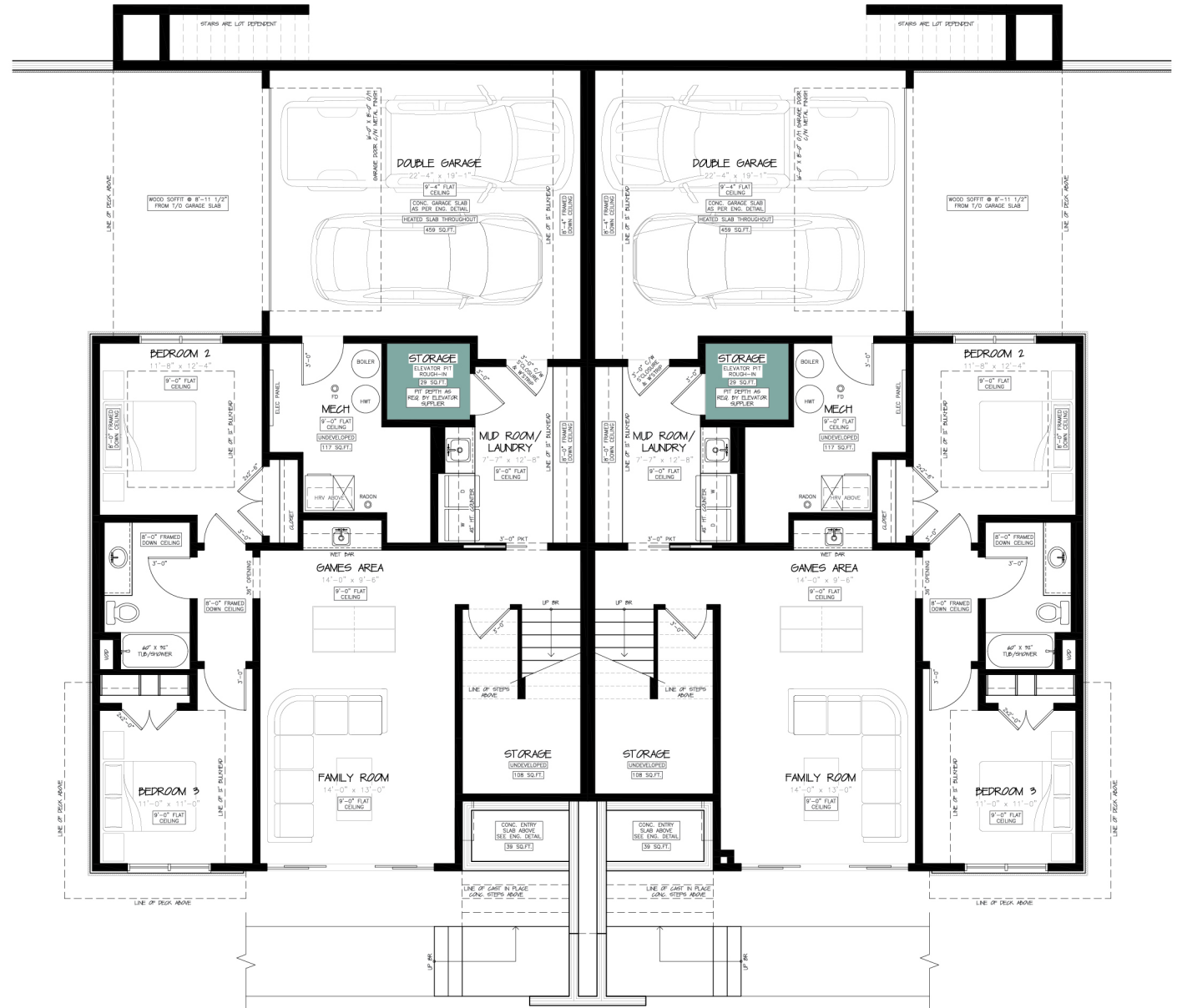
LOWER LEVEL

THE THREE SISTERS BUNGALOWS Faith, Hope and Charity - Elevator

TOTAL DEVELOPED AREA	2,899 SQ. FT.
MAIN LEVEL	1,594 SQ. FT.
LOWER LEVEL	1,305 SQ. FT.

DIMENSIONS

Great Room:	15'-0" x 13'-0"
Dining Room:	15'-0" x 16'-4"
Kitchen:	12'-6" x 15'-0"
Pantry:	12'-3" x 5'-6"
Entry:	8'-6" x 6'-10"
Foyer:	8'-6" x 5'-9"
Covered Deck:	12'-6" x 15'-0"
BBQ Deck:	12'-0" x 19'-1"
Primary Suite:	13'-0" x 13'-3"
Ensuite:	7'-6" x 12'-0"
Wardrobe:	7'-5" x 10'-3"
Double Garage:	22'-4" x 19'-1"
Mud Room/Laundry:	7'-7" x 12'-8"
Bedroom 2:	11'-8" x 12'-4"
Bedroom 3:	11'-0" x 11'-0"
Family Room:	13'-0" x 13'-0"
Games Area:	14'-0" x 9'-6"



SILVERTIP
CANMORE * ALBERTA