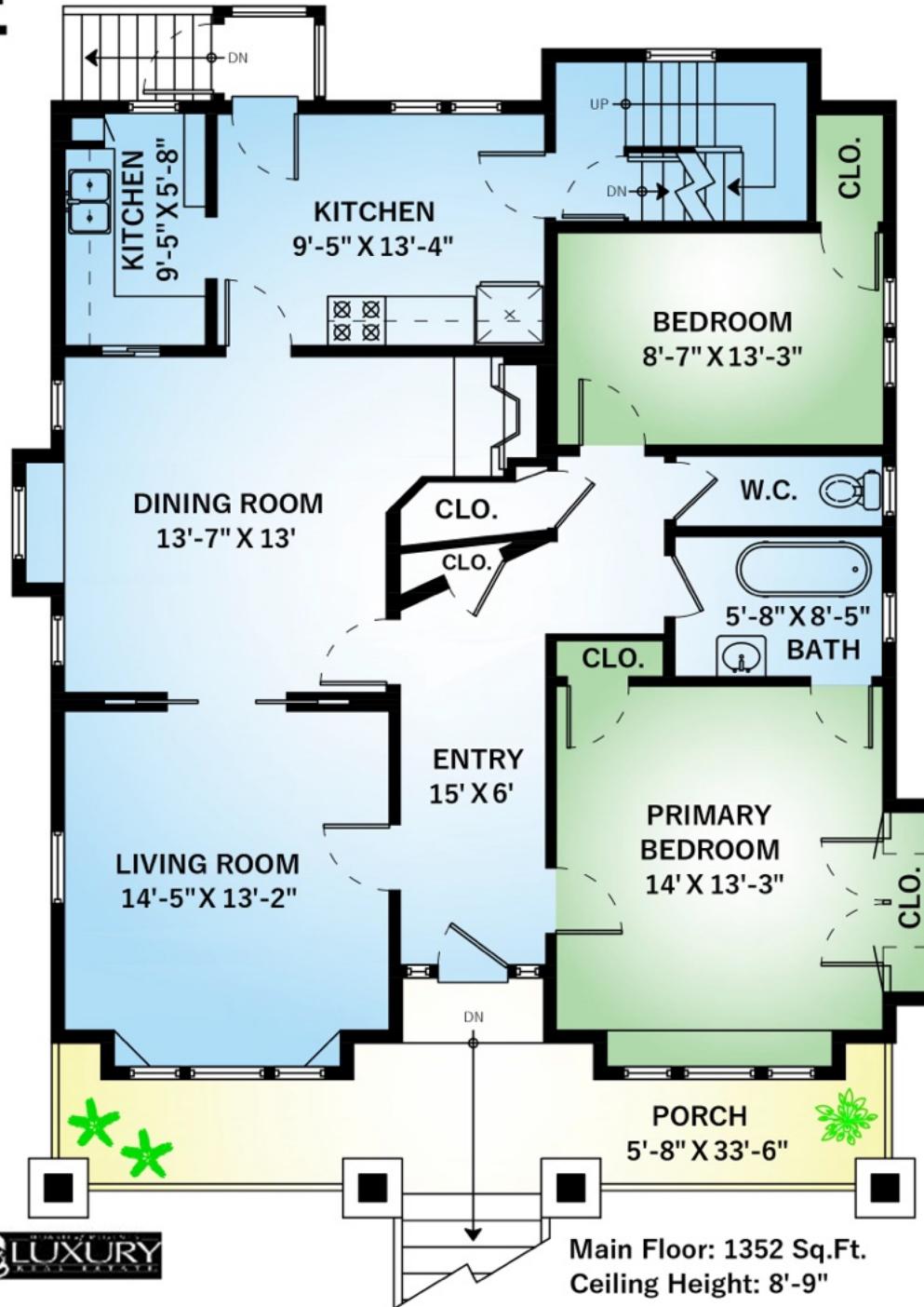
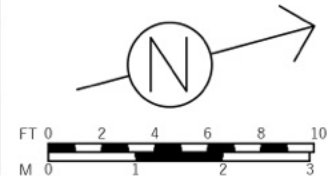


320 LINDEN AVE

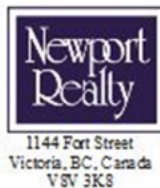
VICTORIA, BC



Main Floor	1352 SQ.FT.
Upper Floor	785 SQ.FT.
Total	2137 SQ.FT.
Porch	179 SQ.FT.
Garage	233 SQ.FT.
Total Extras	412 SQ.FT.
Open To Below	5 SQ.FT.
Lower Floor Unfinished	1304 SQ.FT.



Sylvia Therrien
 Personal Real Estate Corporation,
 Tel: 250.385.2033
 Mobile: 250.888.6621
sylvia@sylviatherrien.ca



Main Floor: 1352 Sq.Ft.
Ceiling Height: 8'-9"

SUPPLIED BY:

MATTHEW JAMES PHOTOGRAPHY

WWW.MATTHEWJAMESPHOTO.CA

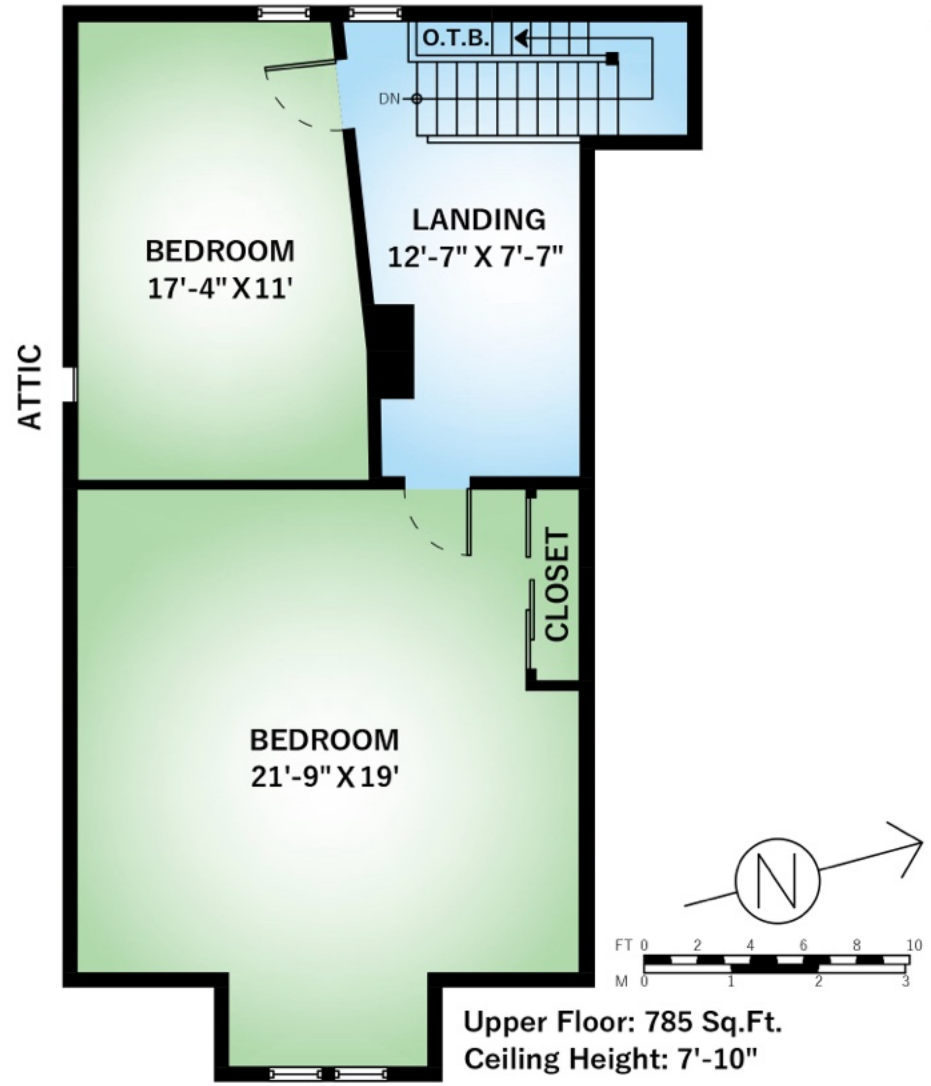
320 LINDEN AVE

VICTORIA, BC

Main Floor	1352 SQ.FT.
Upper Floor	785 SQ.FT.
Total	2137 SQ.FT.

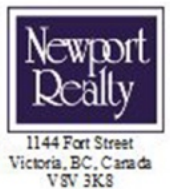
Porch	179 SQ.FT.
Garage	233 SQ.FT.
Total Extras	412 SQ.FT.

Open To Below	5 SQ.FT.
Lower Floor Unfinished	1304 SQ.FT.



Upper Floor: 785 Sq.Ft.
Ceiling Height: 7'-10"

Sylvia Therrien
Personal Real Estate Corporation,
Tel: 250.385.2033
Mobile: 250.888.6621
sylvia@sylviaherrien.ca



SUPPLIED BY:



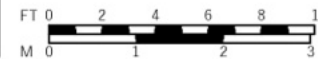
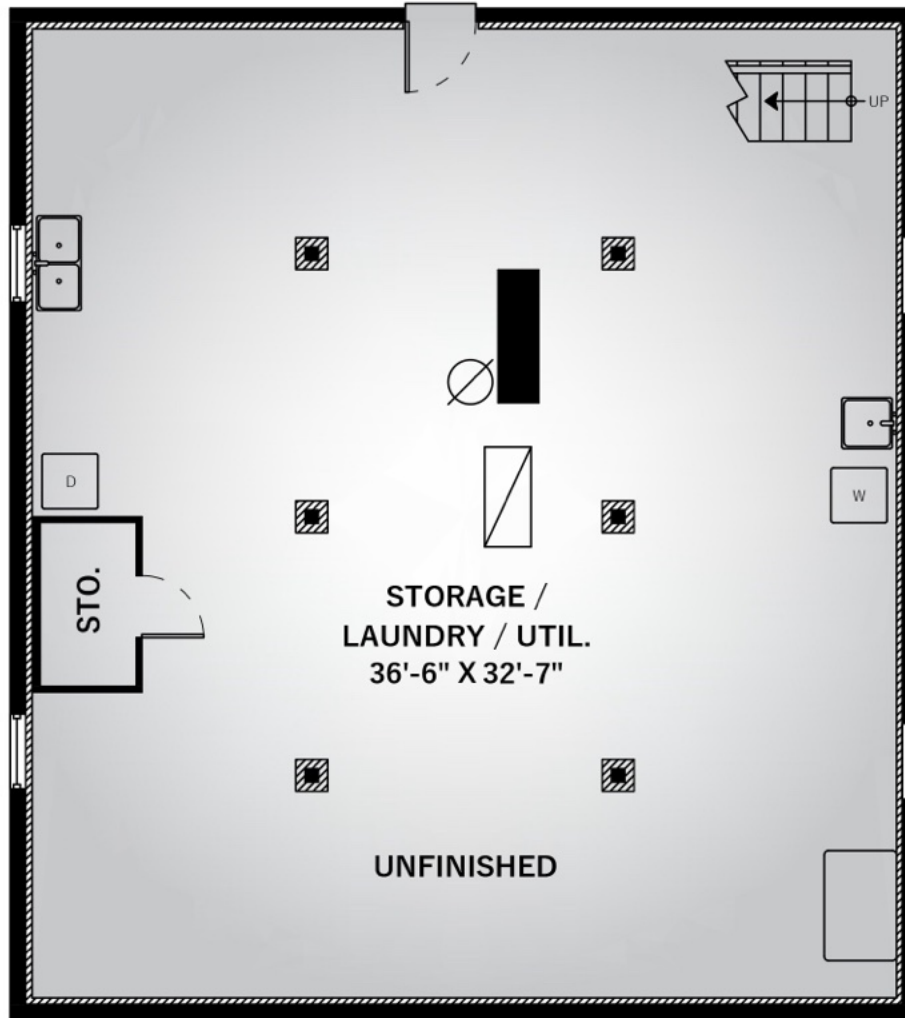
320 LINDEN AVE

VICTORIA, BC

Main Floor	1352 SQ.FT.
Upper Floor	785 SQ.FT.
Total	2137 SQ.FT.

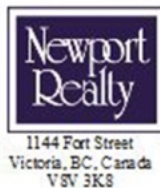
Porch	179 SQ.FT.
Garage	233 SQ.FT.
Total Extras	412 SQ.FT.

Open To Below	5 SQ.FT.
Lower Floor Unfinished	1304 SQ.FT.



Lower Floor (Unfinished): 1304 Sq.Ft.
Ceiling Height: 6'

Sylvia Therrien
Personal Real Estate Corporation,
Tel: 250.385.2033
Mobile: 250.888.6621
sylvia@sylviatherrien.ca



SUPPLIED BY:

MATTHEW JAMES PHOTOGRAPHY

WWW.MATTHEWJAMESPHOTO.CA