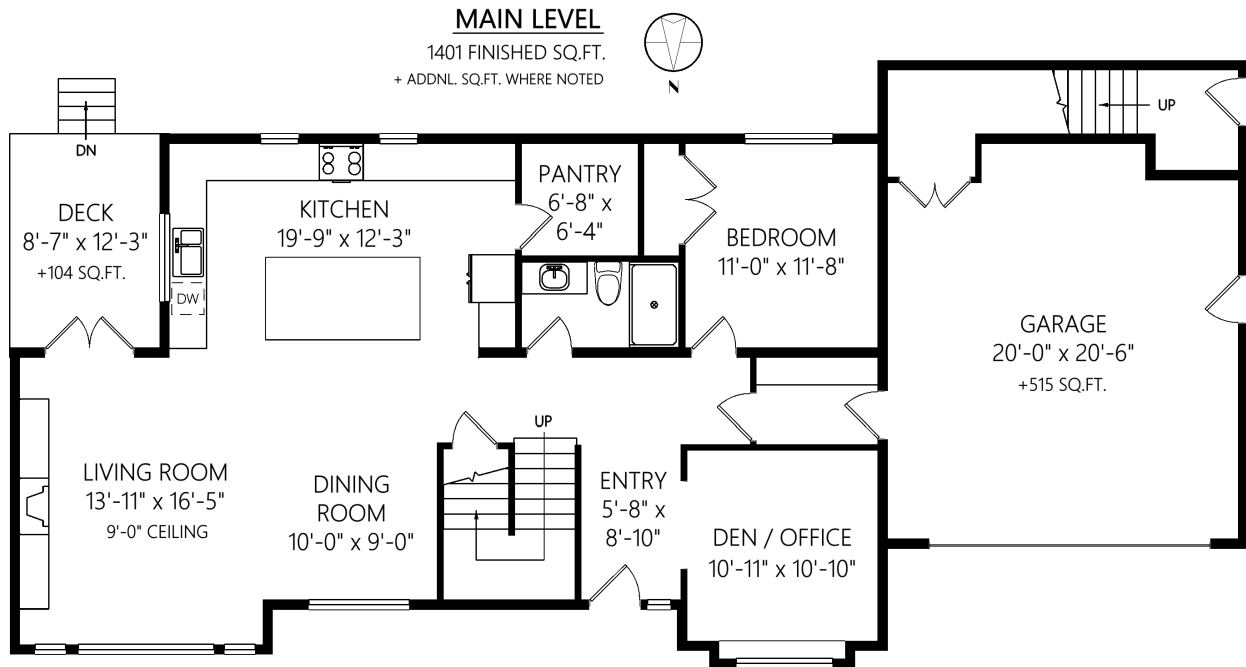




806 Albatross Pl



| | Fin. Sq.Ft. | UnFin. Sq.Ft. | Total Sq.Ft. |
|--------------|-------------|---------------|--------------|
| Garage | 0 | 515 | 515 |
| Main Level | 1401 | 0 | 1401 |
| Upper Level | 1709 | 0 | 1709 |
| Total | 3110 | 515 | 3625 |

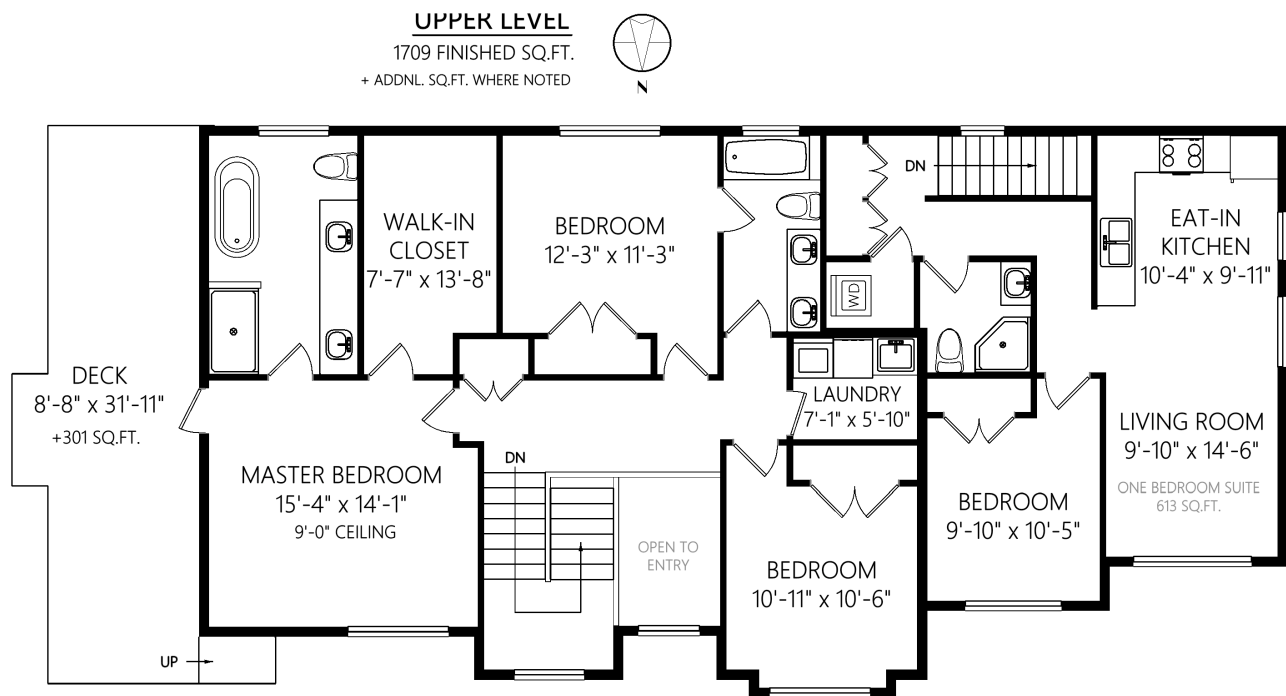
Shown length and width dimensions are approximate.
Area sq.ft. is representative of the on-site measurements. (1" accuracy)

standard
standardres.ca

Figures, Calculations, and Representations are for indicative and promotional purpose only.
VI Standard Real Estate Services Inc. will not be liable for any damages of any kind
arising from the mis-use of this information.



806 Albatross Pl



| | Fin. Sq.Ft. | UnFin. Sq.Ft. | Total Sq.Ft. |
|--------------|-------------|---------------|--------------|
| Garage | 0 | 515 | 515 |
| Main Level | 1401 | 0 | 1401 |
| Upper Level | 1709 | 0 | 1709 |
| Total | 3110 | 515 | 3625 |

Shown length and width dimensions are approximate.
Area sq.ft. is representative of the on-site measurements. (1" accuracy)

standard
standardres.ca

Figures, Calculations, and Representations are for indicative and promotional purpose only.
VI Standard Real Estate Services Inc. will not be liable for any damages of any kind arising from the mis-use of this information.