



**FRONT ELEVATION**



**REAR ELEVATION**

These plans are intended for illustration purposes. Detailed working drawings will be provided to subcontractors and suppliers for construction purposes. The developer reserves the right to make changes to the plans and specifications at their discretion. Refer to colour boards for actual exterior colors. E and O E



**the cottages**  
ON OSOYOOO LAKE

unit number:

**8**

unit style:

**Ambrosia - For Construction**

drawings prepared by:  
**Precision Building Design Associates**  
Chilliwack, B.C. (604) 792-0826

color scheme:

**Scheme - 1**

date:  
**June 3, 2019**

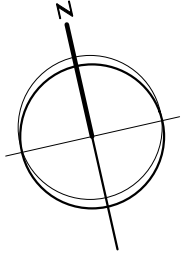
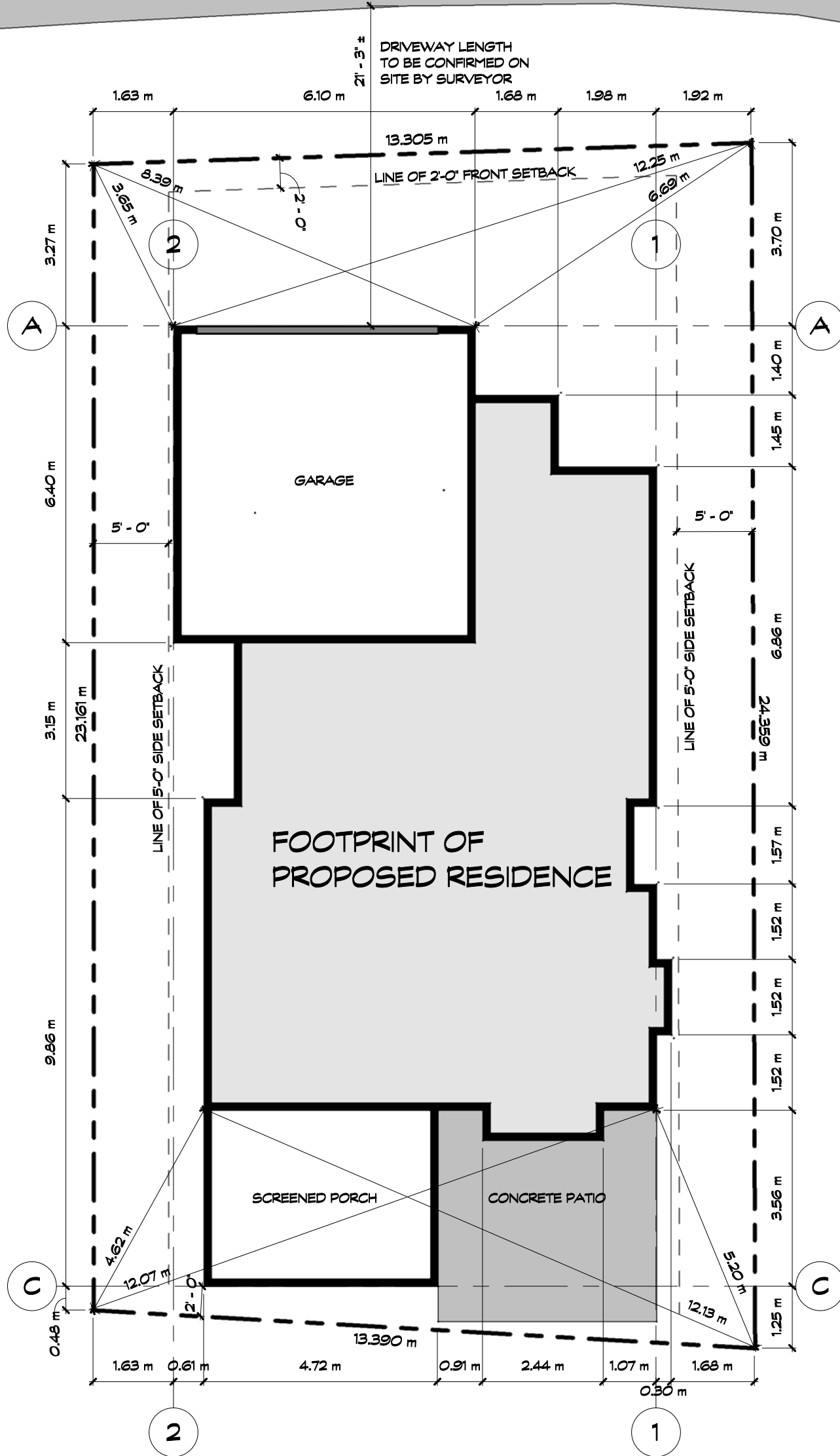
scale:  
**3/16" = 1'-0"**



**van maren**  
GROUP OF COMPANIES

-Drawings are subject to change without notice. The developer reserves the right to make modifications to the drawings at their sole discretion in accordance with building code guidelines and to maintain the high quality of the homes.  
-Window sizes are subject to change from site to site based on site limiting distance calculations.  
-Drawings to be read in conjunction with structural drawings by VanDenBrink Engineering LTD.  
-These drawings are based on the original drawings and details created by Rositch Hemphill Architects, and have been subsequently modified and/or reformatted by Precision Building Design Associates Ltd.

# BURROWING OWL



## SITE PLAN



the cottages  
ON OSOYOOO LAKE

unit number:  
**8**

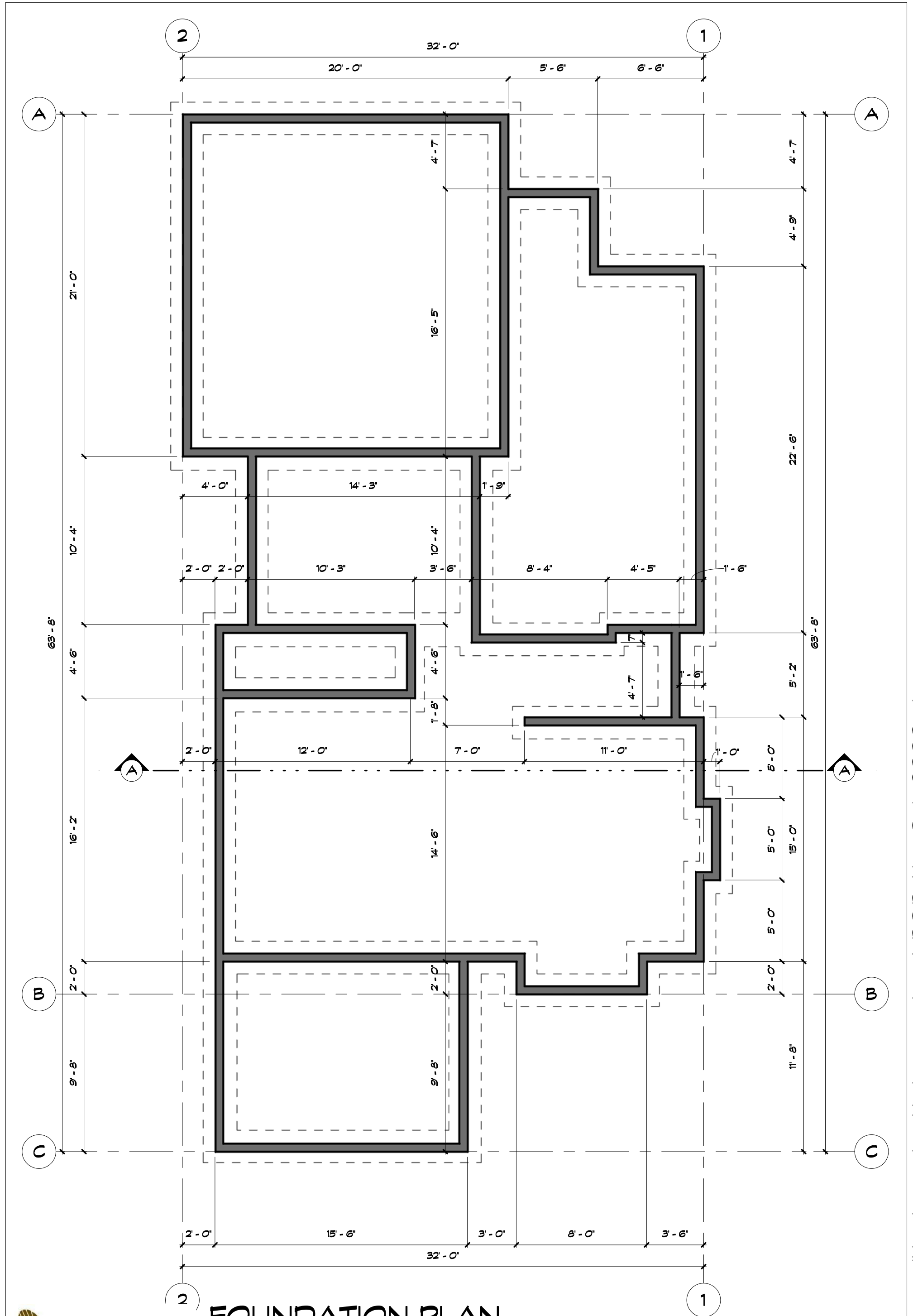
unit style:  
**Ambrosia - For Construction**  
drawings prepared by:  
Precision Building Design Associates  
Chilliwack, B.C. (604) 792-0826

color scheme:  
**Scheme - 1**  
date:  
June 3, 2019  
scale:  
1:100



-Drawings are subject to change without notice. The developer reserves the to make modifications to the drawings at their sole discretion in accordance with building code guidelines and to maintain the high quality of the homes.  
-Window sizes are subject to change from site to site based on site limiting distance calculations.  
-Drawings to be read in conjunction with structural drawings by VanDenBrink Engineering LTD.  
-These drawings are based on the original drawings and details created by Rositch Hemphill Architects, and have been subsequently modified and/or reformatted by Precision Building Design Associates Ltd.

This home will be designed and built to comply with BC Building Code 2006 edition



# FOUNDATION PLAN



unit number:  
**8**

unit style:  
**Ambrosia - For Construction**  
drawings prepared by:  
**Precision Building Design Associates**  
Chilliwack, B.C. (604) 792-0826

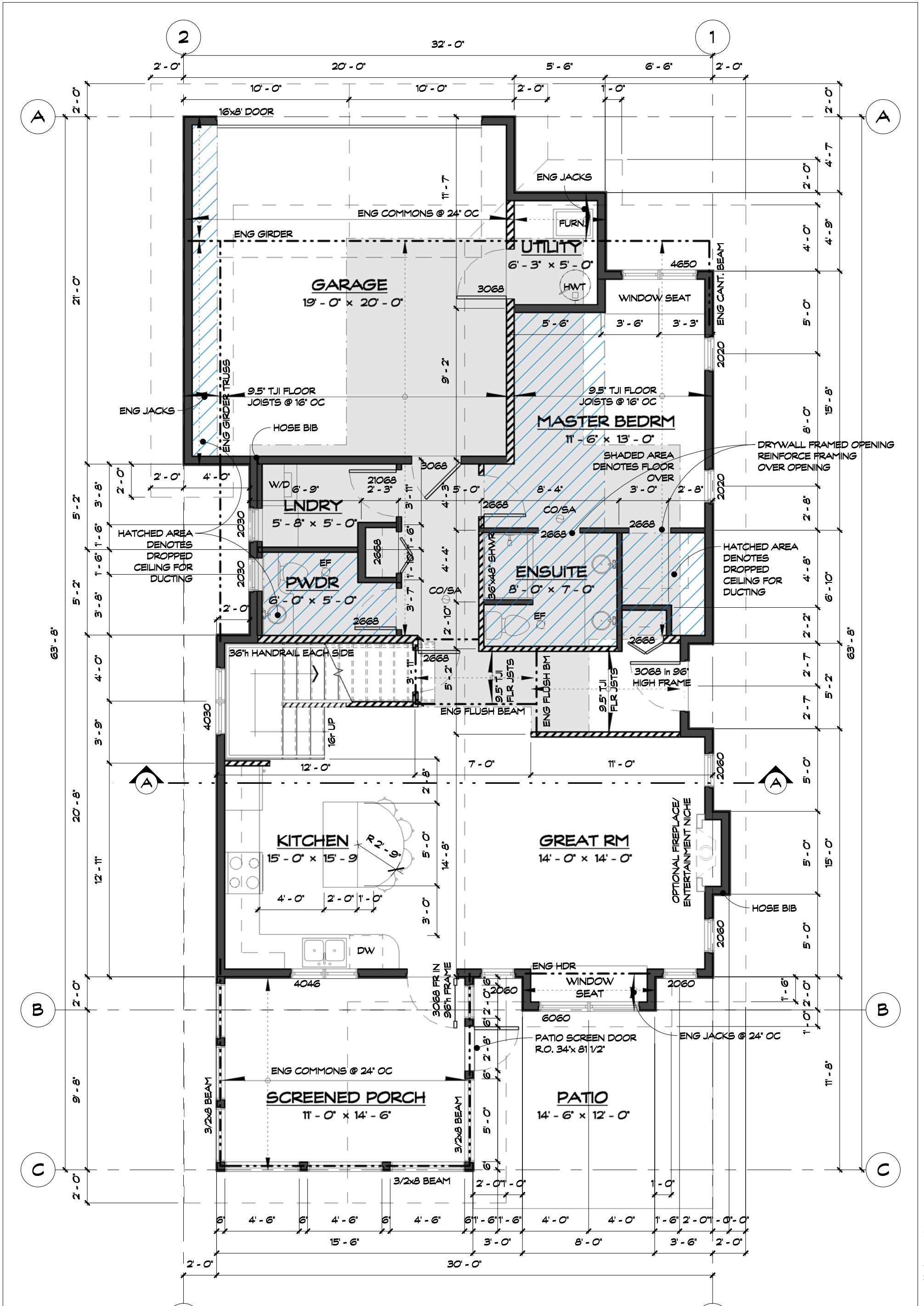
color scheme:  
**Scheme - 1**  
date:  
**June 3, 2019**  
scale:  
**3/16" = 1'-0"**



-Drawings are subject to change without notice. The developer reserves the to make modifications to the drawings at their sole discretion in accordance with building code guidelines and to maintain the high quality of the homes.  
-Window sizes are subject to change from site to site based on site limiting distance calculations.  
-Drawings to be read in conjunction with structural drawings by VanDenBrink Engineering LTD.  
-These drawings are based on the original drawings and details created by Rositch Hemphill Architects, and have been subsequently modified and/or reformatted by Precision Building Design Associates Ltd.

This home will be designed and built to comply with BC Building Code 2006 edition





unit number:  
**8**

unit style:  
**Ambrosia - For Construction**

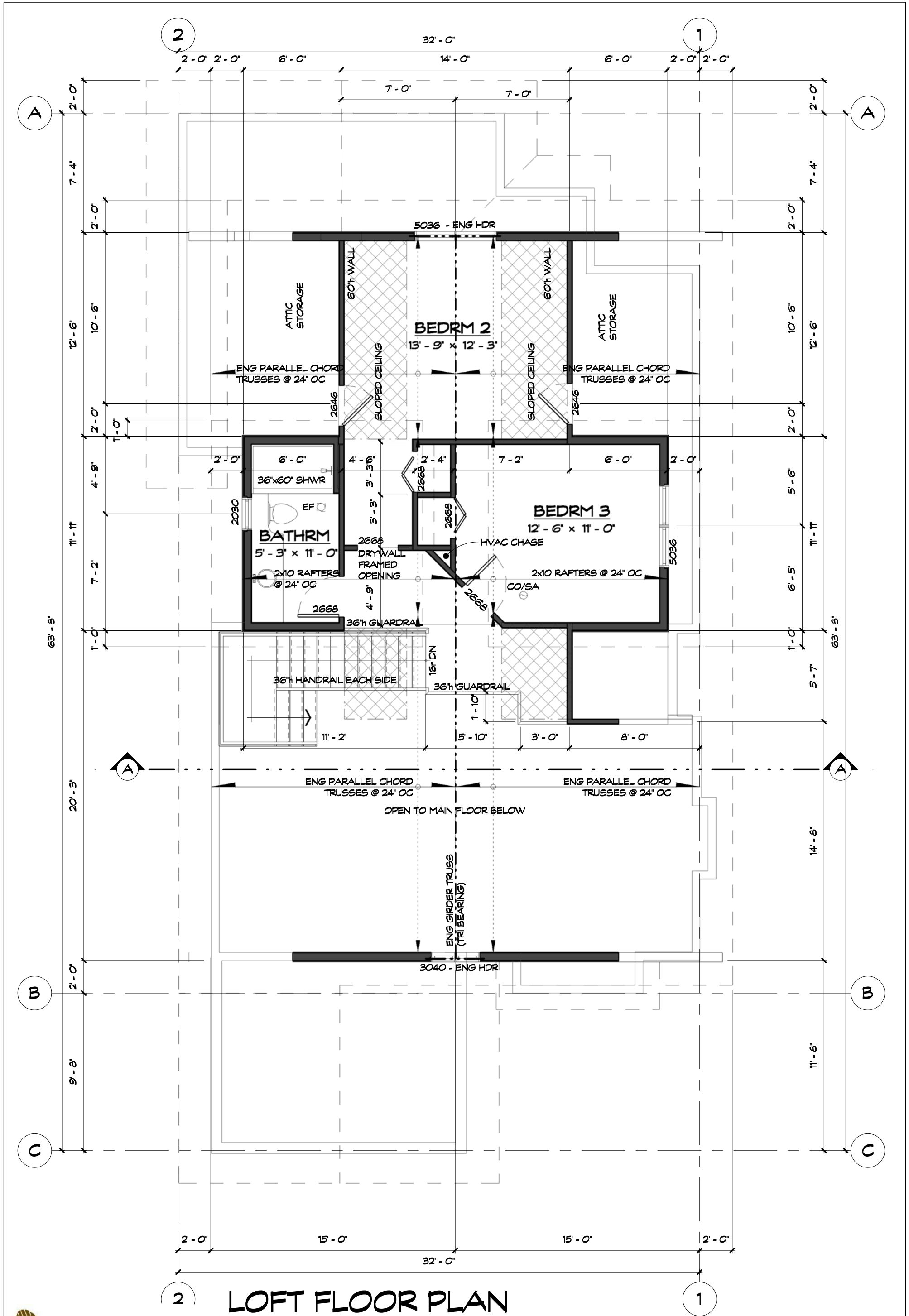
drawings prepared by:  
Precision Building Design Associates  
Chilliwack, B.C. (604) 792-0826

color scheme:  
Scheme - 1  
date:  
June 3, 2019  
scale:  
3/16" = 1'-0"



-Drawings are subject to change without notice. The developer reserves the to make modifications to the drawings at their sole discretion in accordance with building code guidelines and to maintain the high quality of the homes.  
 -Window sizes are subject to change from site to site based on site limiting distance calculations.  
 -Drawings to be read in conjunction with structural drawings by VanDenBrink Engineering LTD.  
 -These drawings are based on the original drawings and details created by Rositch Hemphill Architects, and have been subsequently modified and/or reformatted by Precision Building Design Associates Ltd.

This home will be designed and built to comply with BC Building Code 2006 edition



# LOFT FLOOR PLAN

530 SQ. FT. LOFT FLOOR AREA EXCLUDING STAIRS



unit number:  
**8**

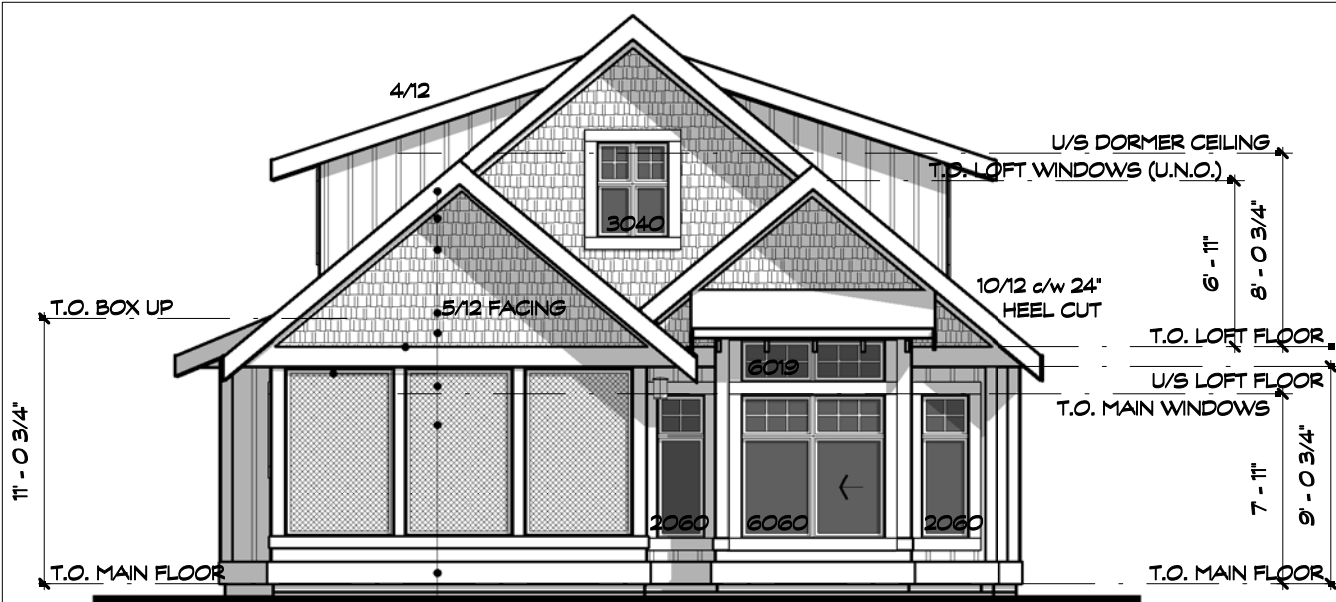
unit style:  
**Ambrosia - For Construction**  
drawings prepared by:  
**Precision Building Design Associates**  
Chilliwack, B.C. (604) 792-0826

color scheme:  
**Scheme - 1**  
date:  
**June 3, 2019**  
scale:  
**3/16" = 1'-0"**



-Drawings are subject to change without notice. The developer reserves the to make modifications to the drawings at their sole discretion in accordance with building code guidelines and to maintain the high quality of the homes.  
-Window sizes are subject to change from site to site based on site limiting distance calculations.  
-Drawings to be read in conjunction with structural drawings by VanDenBrink Engineering LTD.  
-These drawings are based on the original drawings and details created by Rositch Hemphill Architects, and have been subsequently modified and/or reformatted by Precision Building Design Associates Ltd.

This home will be designed and built to comply with BC Building Code 2006 edition



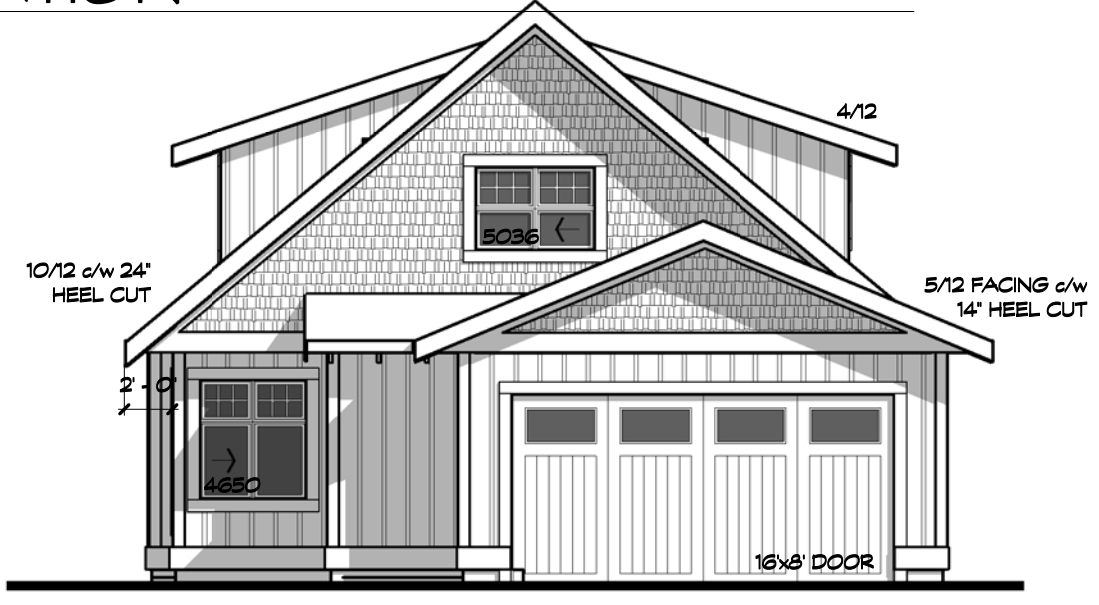
- 2x8 TRIM BOARD
- 2x10 GABLE END FASCIA
- HARDI SHINGLES
- SHINGLE ROOF
- 2x6 FASCIA BOARD
- 2x6 RAFTER TAILS @ 24" OC
- VERTICAL BOARD AND BATTEN SIDING
- VINYL FRAME WINDOWS
- 2x6 TRIM AROUND EXTERIOR OPENINGS
- 2x8 BARGE BOARD

## FRONT ELEV.

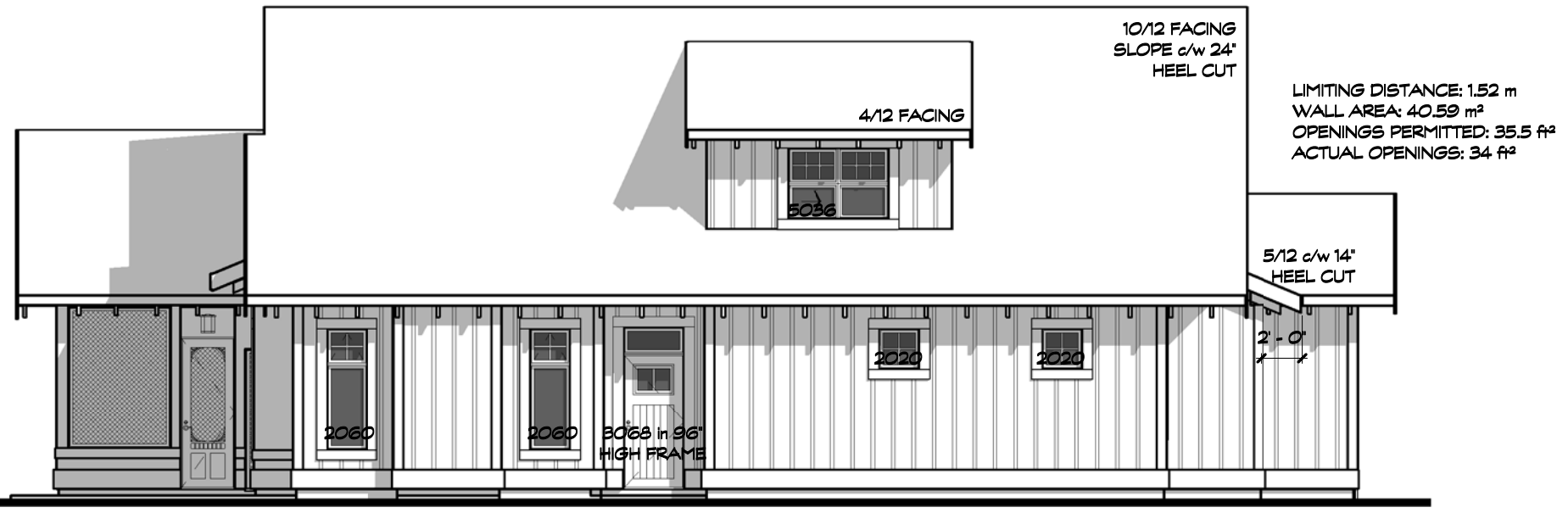


LIMITING DISTANCE: 1.52 m  
 WALL AREA: 39.95 m<sup>2</sup>  
 OPENINGS PERMITTED: 34.91 ft<sup>2</sup>  
 ACTUAL OPENINGS: 20 ft<sup>2</sup>

## RH SIDE ELEVATION



## REAR ELEVATION



LIMITING DISTANCE: 1.52 m  
 WALL AREA: 40.59 m<sup>2</sup>  
 OPENINGS PERMITTED: 35.5 ft<sup>2</sup>  
 ACTUAL OPENINGS: 34 ft<sup>2</sup>

## LH SIDE ELEVATION



the cottages  
 ON OSOYOOUS LAKE

unit number:  
**8**

unit style:  
**Ambrosia - For Construction**  
 drawings prepared by:  
 Precision Building Design Associates  
 Chilliwack, B.C. (604) 792-0826

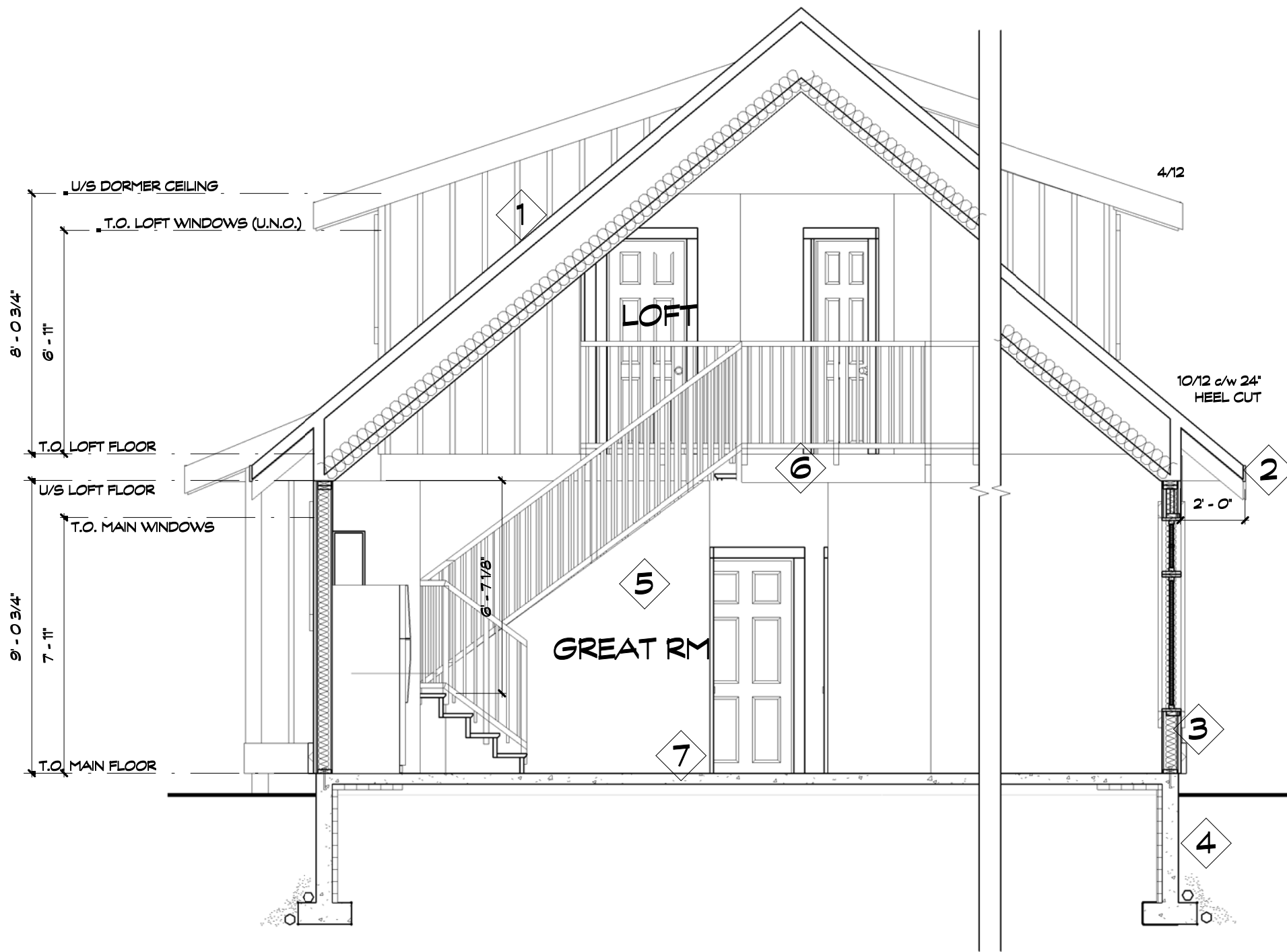
color scheme:  
 Scheme - 1  
 date:  
 June 3, 2019  
 scale:  
 1/8" = 1'-0"



-Drawings are subject to change without notice. The developer reserves the to make modifications to the drawings at their sole discretion in accordance with building code guidelines and to maintain the high quality of the homes.  
 -Window sizes are subject to change from site to site based on site limiting distance calculations.  
 -Drawings to be read in conjunction with structural drawings by VanDenBrink Engineering LTD.  
 -These drawings are based on the original drawings and details created by Rositch Hemphill Architects, and have been subsequently modified and/or reformatted by Precision Building Design Associates Ltd.

This home will be designed and built to comply with BC Building Code 2006 edition





**A CROSS SECTION**

ASSEMBLIES	
1	<b>MAIN ROOF</b> FIBERGLASS SHINGLE ROOF 15# BUILDING PAPER OVER ENTIRE ROOF SURFACE 1/2" OSB OR PLYWOOD SHEATHING c/w H-CLIPS AS REQ'D ENGINEERED TRUSSES @ 24" OC 1:300 ATTIC VENTILATION (PLASTIC RIDGE VENTS) R-40 LOOSE FILL ATTIC INSULATION 6mil POLY VB ON WARM SIDE 5/8" GYPSUM BOARD CEILINGS FINISHED
2	<b>FASCIA</b> 5/4"x6" HARDIE BOARD FASCIA 5/4"x10" HARDIE BOARD GABLE END FASCIA PAINTED 1/2" PLYWOOD (SLOPED WITH U/S OF ROOF SHEATHING) 2x6 RAFTER TAILS @ 24" OC
3	<b>EXTERIOR WALLS</b> HARDI SIDING (REFER TO ELEVATIONS) TYPAR 1/2" PLYWOOD OR OSB SHEATHING 2x6 STUDS @ 16" OC R20 BATT INSULATION 6mil POLY VB ON WARM SIDE 1/2" WALL GYPSUM BOARD FINISHED
4	<b>EXTERIOR FOUNDATION WALLS</b> CONCRETE FOUNDATION/FOOTINGS TO BE ENGINEERED SILL GASKET 5/8" x 10" A.B'S @ 6'-0" OC ASPHALT EMULSION 2" RIGID INSULATION LINER ON INSIDE ENG. CONCRETE FOOTING PLACE ON UNDISTURBED SOIL FREE OF FILL ENGINEER APPROVED PAD

ASSEMBLIES	
5	<b>INTERIOR WALLS</b> 2x4 STUDS @ 16" OC WITH DBL TOP AND SINGLE BOTTOM PLATES 1/2" WALL GYPSUM BOARD FINISHED
6	<b>WOOD FLOOR</b> 5/8" T&G PLYWOOD OR GOLD EDGE OSB GLUED/SCREWED 9.5" TJI FLOOR JOISTS @ 16" OC CROSS BRIDGING AT MID-SPAN AS REQ. PER ENG. DOUBLE RIM JOISTS PARALLEL WITH EXTERIOR/ INTERIOR LOAD BEARING WALLS 5/8" GYPSUM BOARD CEILINGS FINISHED
7	<b>CONCRETE FLOOR</b> 4" CONCRETE SLAB ON 6mil POLY MIN 6" COMPACTED GRANULAR FILL
8	<b>GARAGE FLOOR</b> 4" CONCRETE SLAB SLOPED 1% AWAY ON 6mil POLY MIN 6" COMPACTED GRANULAR FILL



the cottages  
ON OSOYUOS LAKE

unit number:  
**8**

unit style:  
**Ambrosia - For Construction**  
 drawings prepared by:  
**Precision Building Design Associates**  
 Chilliwack, B.C. (604) 792-0826

color scheme:  
**Scheme - 1**  
 date:  
**June 3, 2019**  
 scale:  
**1/4" = 1'-0"**



This home will be designed and built to comply with BC Building Code 2006 edition

-Drawings are subject to change without notice. The developer reserves the to make modifications to the drawings at their sole discretion in accordance with building code guidelines and to maintain the high quality of the homes.  
 -Window sizes are subject to change from site to site based on site limiting distance calculations.  
 -Drawings to be read in conjunction with structural drawings by VanDenBrink Engineering LTD.  
 -These drawings are based on the original drawings and details created by Rositch Hemphill Architects, and have been subsequently modified and/or reformatted by Precision Building Design Associates Ltd.