

OPEN TO BELOW

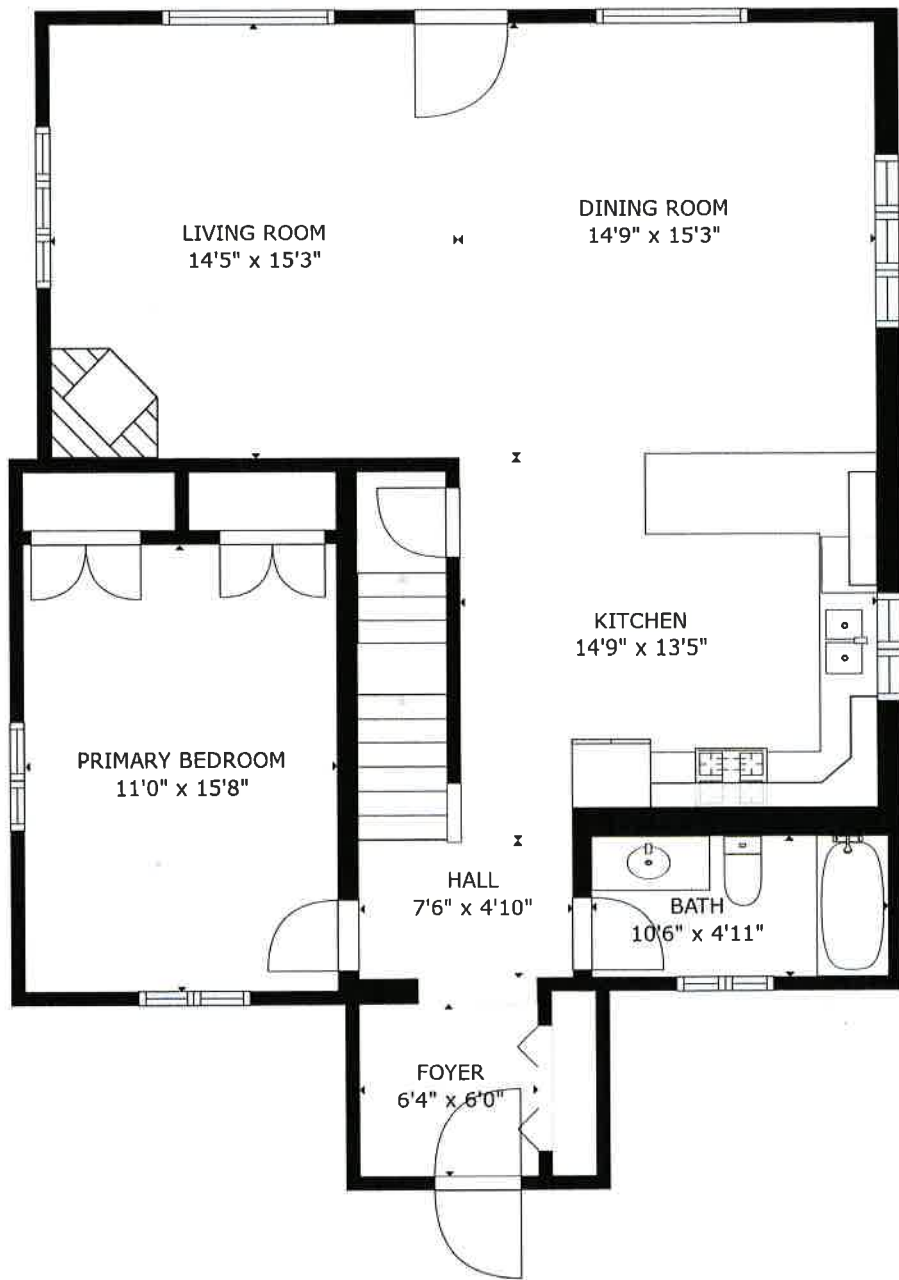
HALL
9'8" x 5'7"

BEDROOM
10'6" x 12'3"

BEDROOM
12'4" x 11'6"

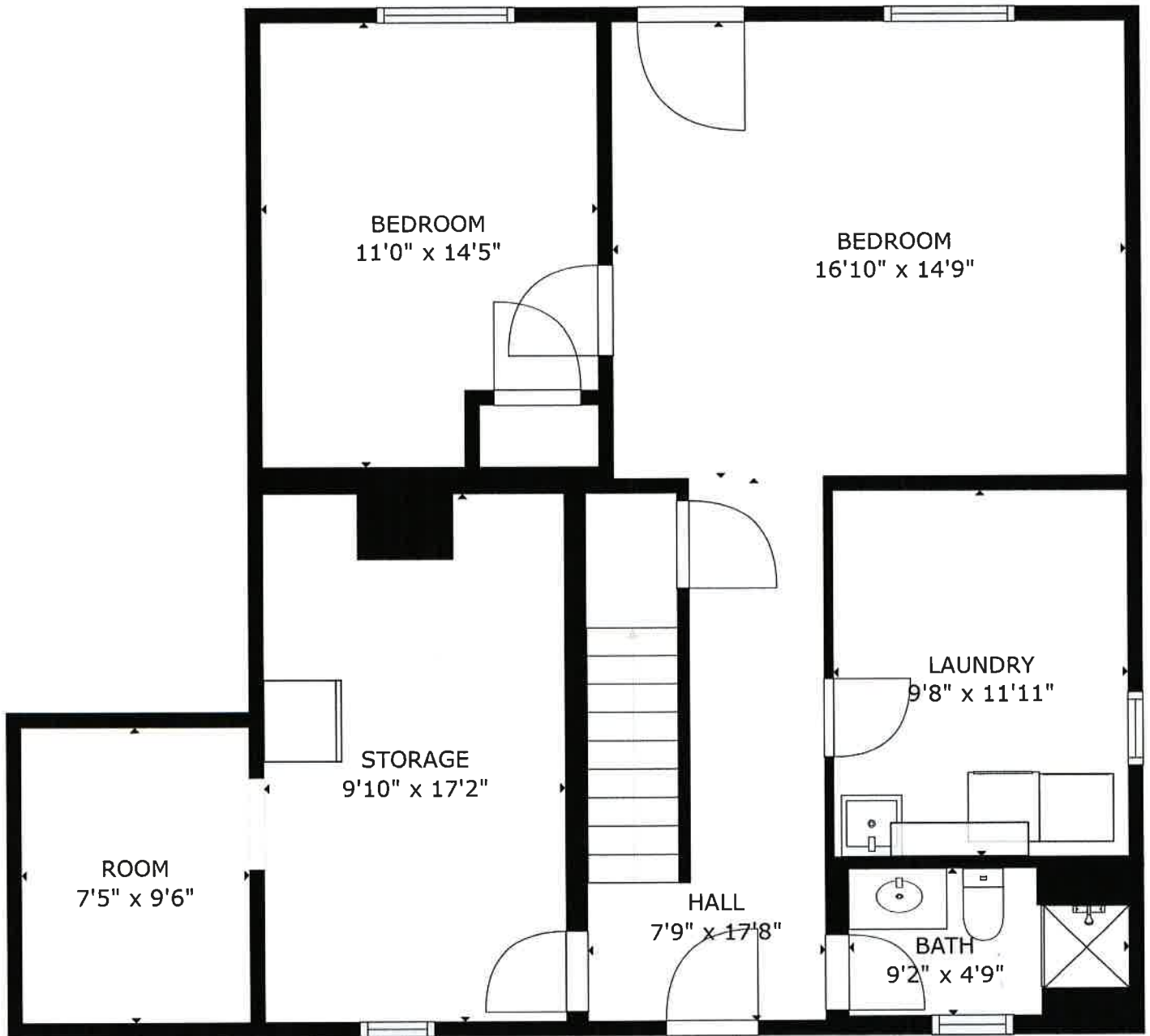
GROSS INTERNAL AREA
FLOOR 1: 991 sq. ft, FLOOR 2: 1058 sq. ft
FLOOR 3: 386 sq. ft, EXCLUDED AREAS:
REDUCED HEADROOM BELOW 1.5M: 10 sq. ft
TOTAL: 2435 sq. ft
SIZES AND DIMENSIONS ARE APPROXIMATE. ACTUAL MAY VARY





GROSS INTERNAL AREA
FLOOR 1: 991 sq. ft, FLOOR 2: 1058 sq. ft
FLOOR 3: 386 sq. ft, EXCLUDED AREAS:
REDUCED HEADROOM BELOW 1.5M: 10 sq. ft
TOTAL: 2435 sq. ft
 SIZES AND DIMENSIONS ARE APPROXIMATE, ACTUAL MAY VARY





GROSS INTERNAL AREA
 FLOOR 1: 991 sq. ft, FLOOR 2: 1058 sq. ft
 FLOOR 3: 386 sq. ft, EXCLUDED AREAS:
 REDUCED HEADROOM BELOW 1.5M: 10 sq. ft
 TOTAL: 2435 sq. ft

SIZES AND DIMENSIONS ARE APPROXIMATE, ACTUAL MAY VARY.

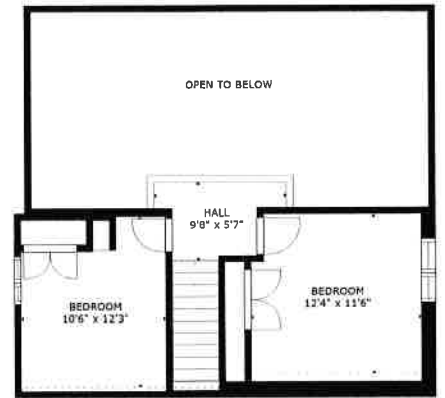




FLOOR 1



FLOOR 2



FLOOR 3

GROSS INTERNAL AREA
 FLOOR 1: 991 sq. ft, FLOOR 2: 1058 sq. ft
 FLOOR 3: 386 sq. ft, EXCLUDED AREAS:
 REDUCED HEADROOM BELOW 1.5M: 10 sq. ft
 TOTAL: 2435 sq. ft
 SIZES AND DIMENSIONS ARE APPROXIMATE. ACTUAL MAY VARY.