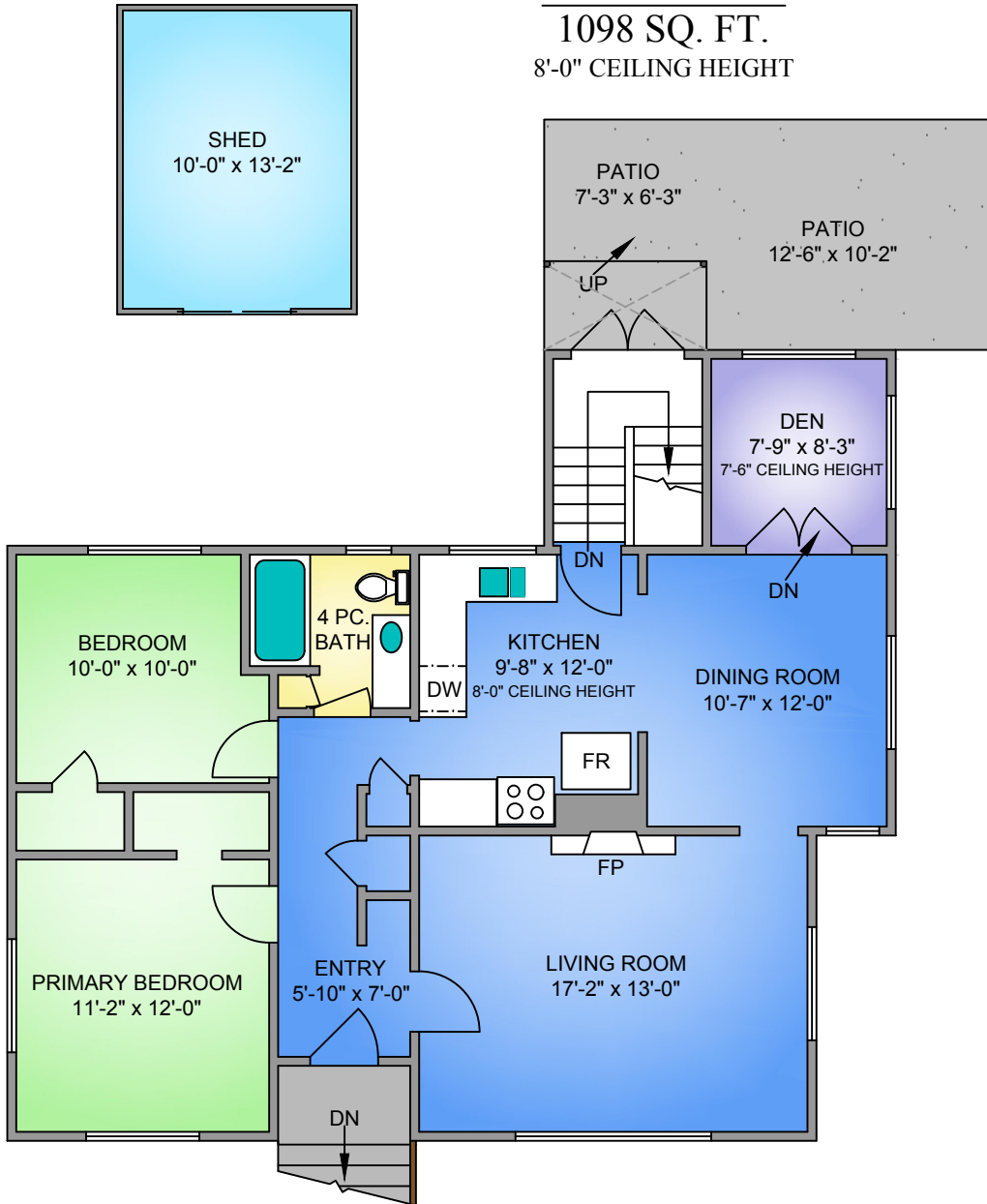


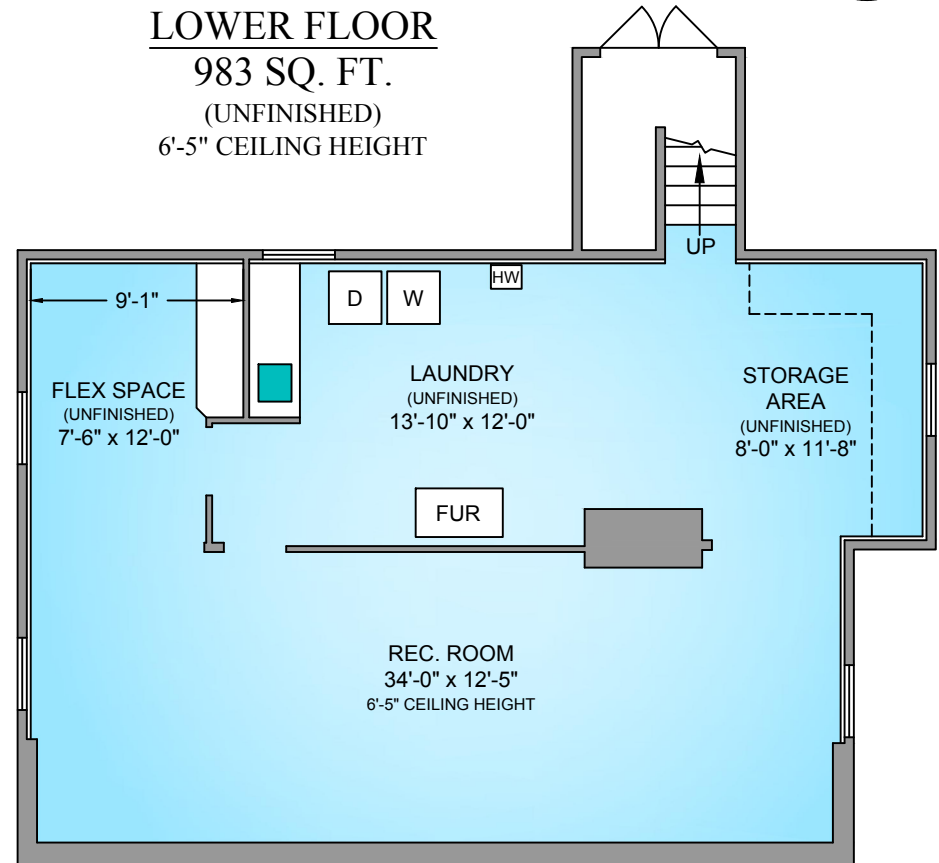
NORTH



MAIN FLOOR
1098 SQ. FT.
8'-0" CEILING HEIGHT



LOWER FLOOR
983 SQ. FT.
(UNFINISHED)
6'-5" CEILING HEIGHT



140 PRICE PLACE
MAY 29, 2024
PREPARED FOR THE EXCLUSIVE USE OF THERESA CARTER.
PLANS MAY NOT BE 100% ACCURATE. IF CRITICAL BUYER TO VERIFY.

FLOOR	TOTAL	AREA (SQ. FT.)		
		FINISHED	UNFINISHED	DECK / PATIO
MAIN	1098	1098	-	172
LOWER	983	-	983	-
TOTAL	2081	1098	983	172