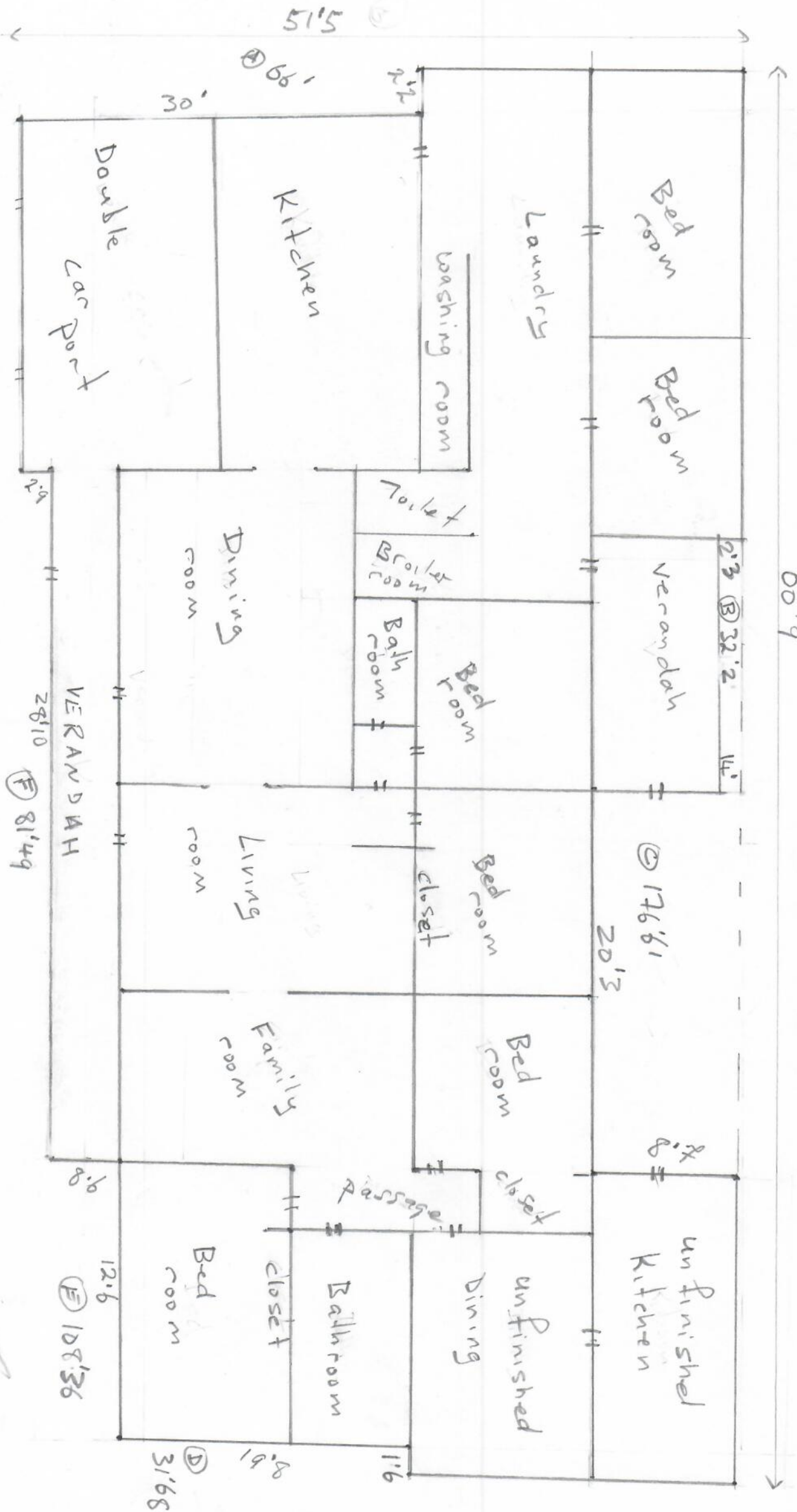


MAIN HOUSE (M/H)

60'9"

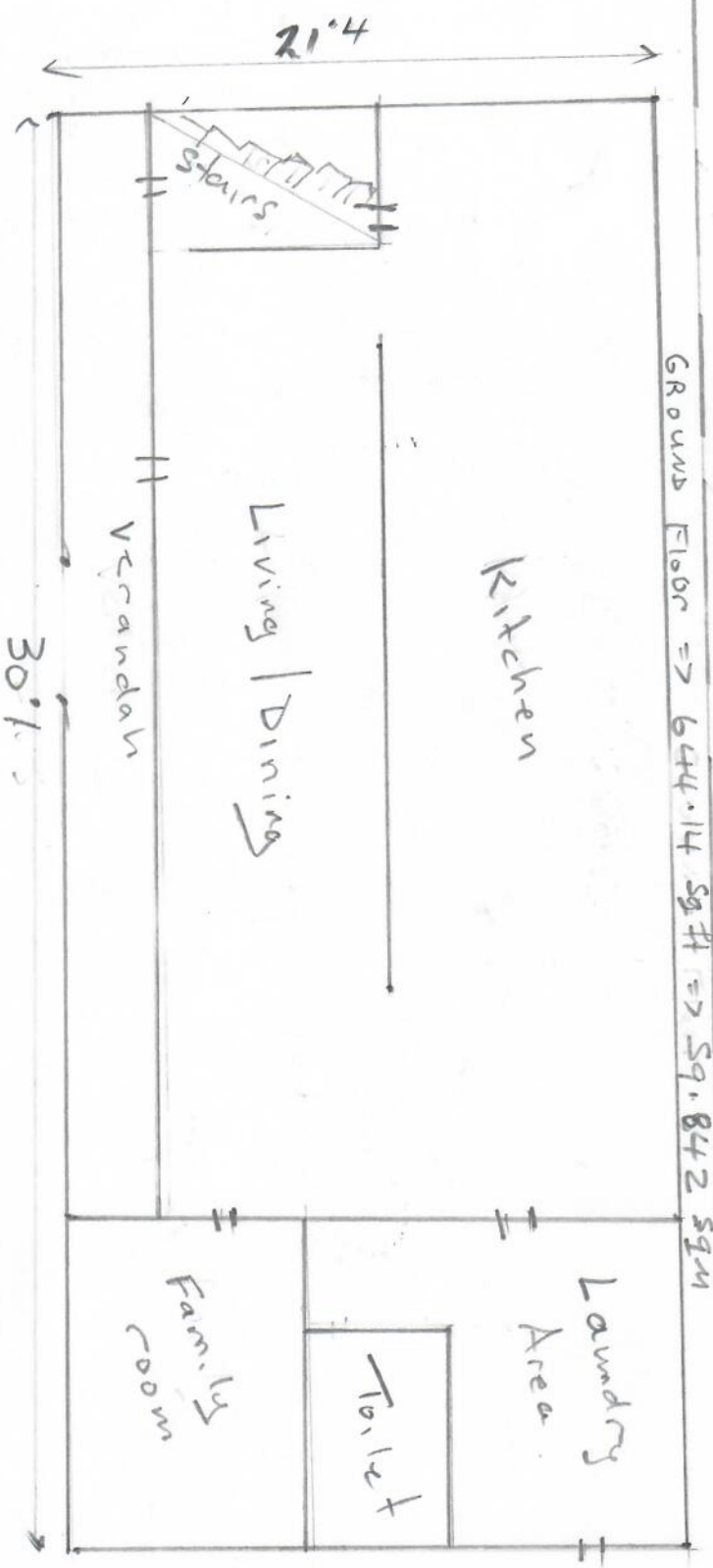
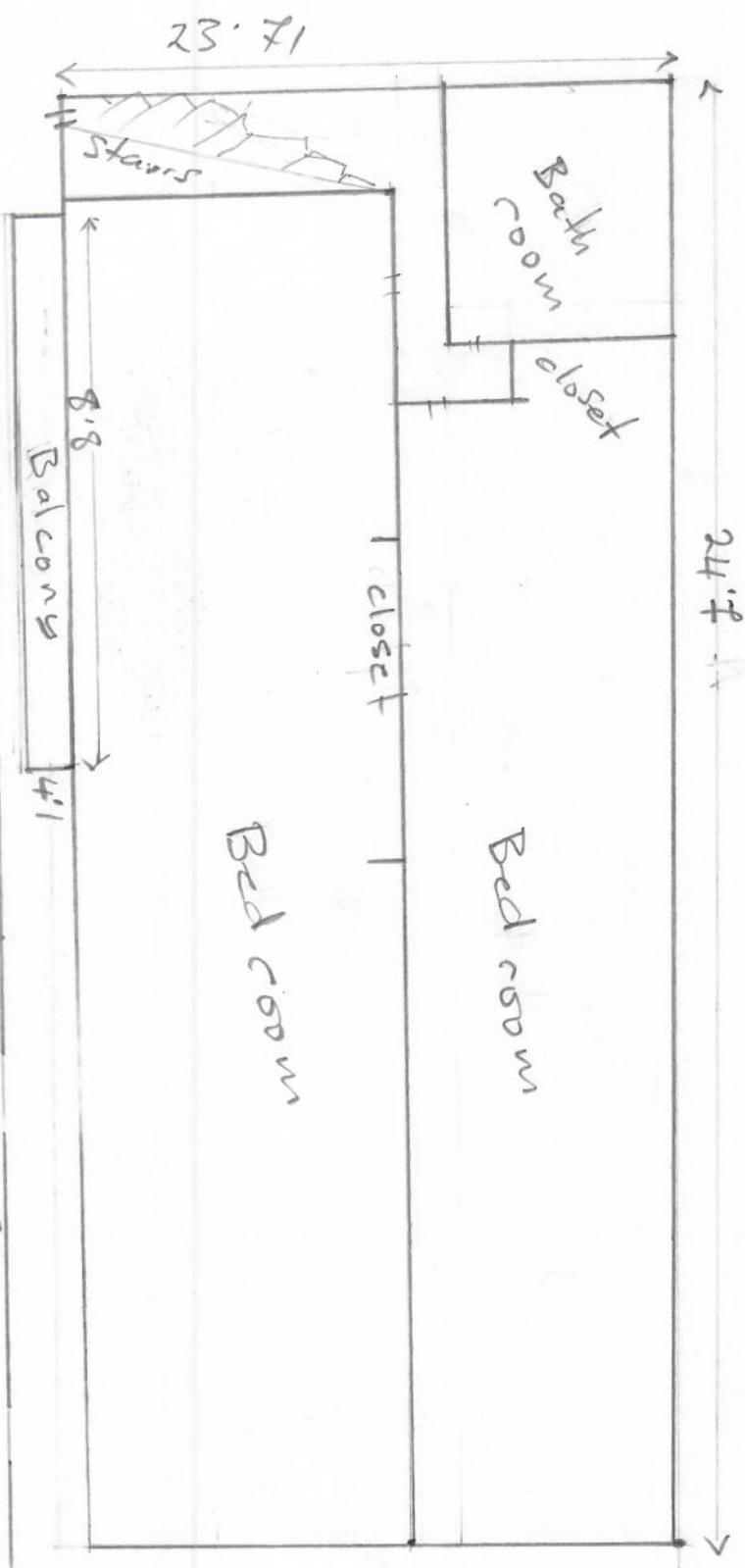


24/11/2023

AM

(2 Storey Flat)

1st Floor \Rightarrow 520.447 sqft \Rightarrow 48.351 sqm



Main House (M/H)

51.5ft x 60.9ft = 3136.35 sqft

- < A = 66.00 sqft >
- < B = 32.20 sqft >
- < C = 176.61 sqft >
- < D = 31.68 sqft >
- < E = 108.36 sqft >
- < F = 81.44 sqft >

(496.34 sqft)

Total sqft M/H 2640.01 sqft

245.264 sqm

Total sqft M/H = 2640.01 sqft

Grand Floor Total \Rightarrow 520.447 sqft

1st Floor Total \Rightarrow 644.14 sqft

Total Building sqft \Rightarrow 3804.597 sqft

Total Building sqm \Rightarrow 353.458 sqm

[Signature]
29/4/2023
M/H