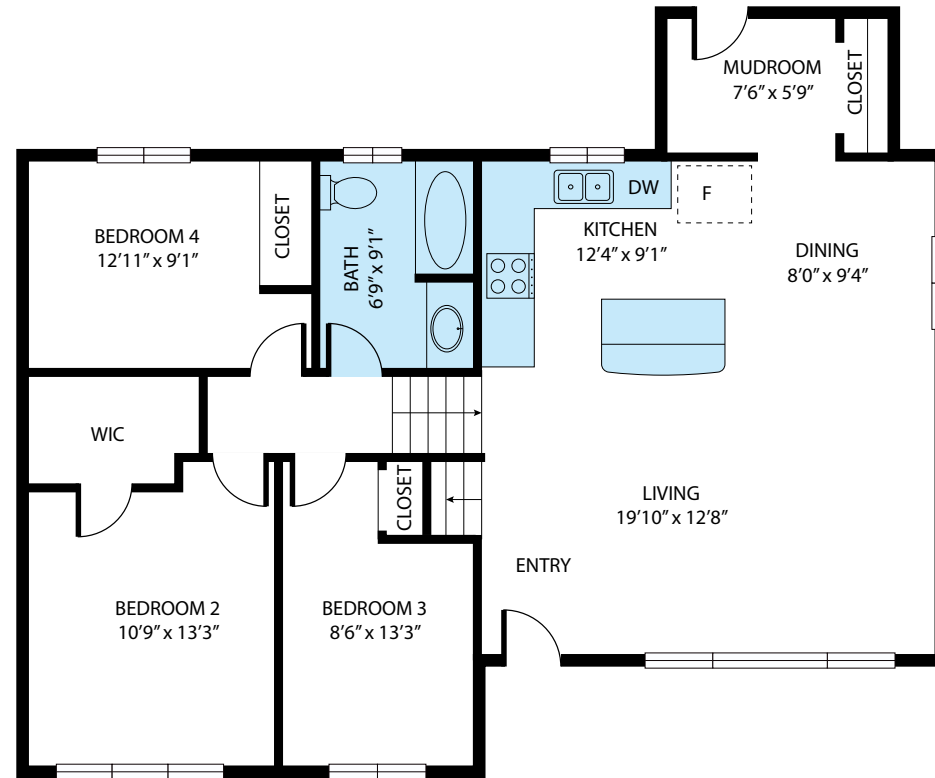
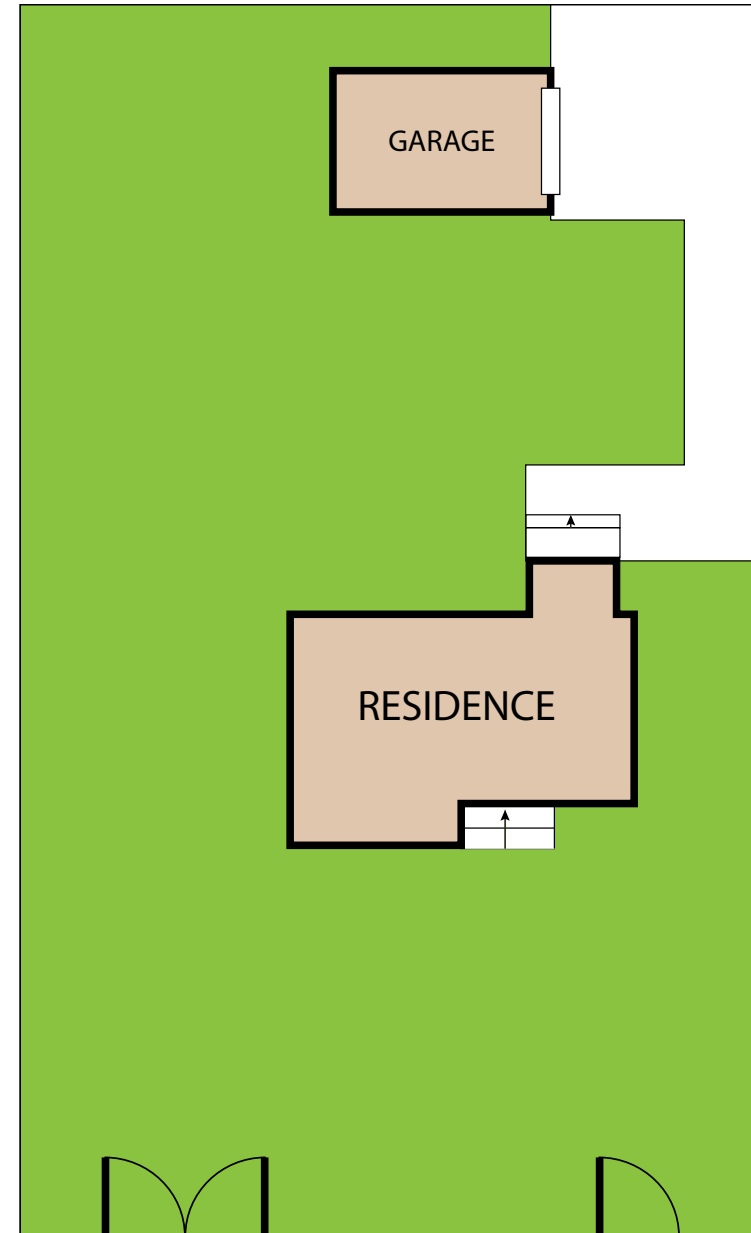


BASEMENT



FIRST FLOOR



672 303 Street, Kimberley V1A 3H2

TOTAL APPROX. FLOOR AREA 1,455 SQ.FT

Whilst every attempt has been made to ensure the accuracy of the floor plan contained here, measurements of doors, windows, rooms and any other items are approximate and no responsibility is taken for any error, omission, or misstatement. This plan is for illustrative purposes only and should be used as such by any prospective purchaser.