

Living Room  
16'1" x 18'8"

Bath  
8'3" x 7'10"

Kitchen  
13'5" x 14'10"

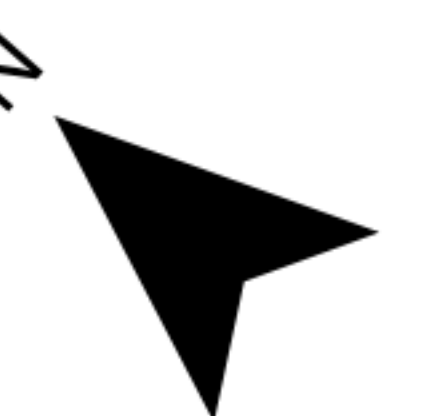
Dining Area  
28'0" x 9'5"

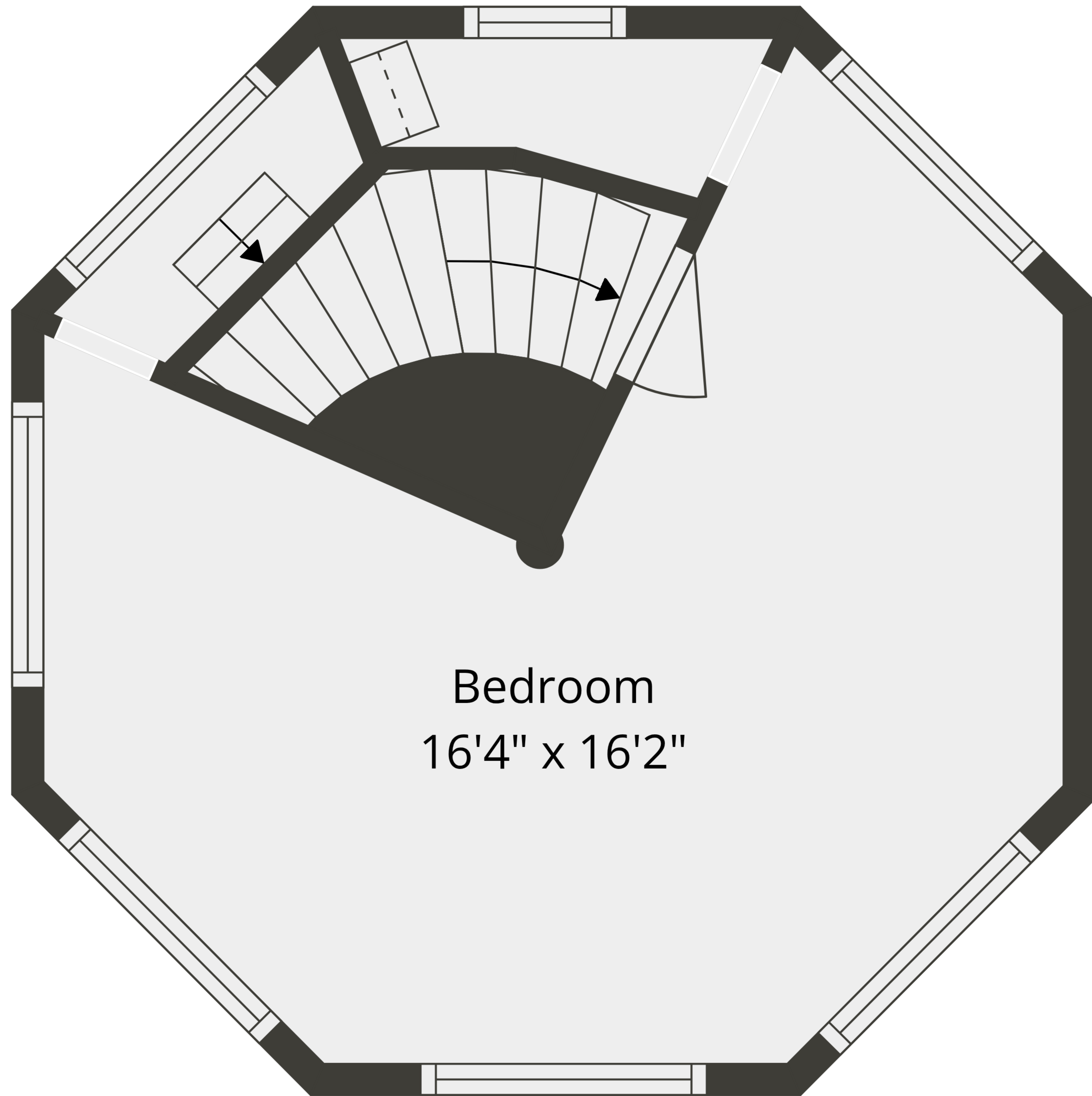
**TOTAL: 1117 sq. ft**

1st floor: 659 sq. ft, 2nd floor: 229 sq. ft, 3rd floor: 229 sq. ft

EXCLUDED AREAS: WALLS: 105 sq. ft

Drawing Scale And Dimensions Are Approximate - Actual Measurements May Vary



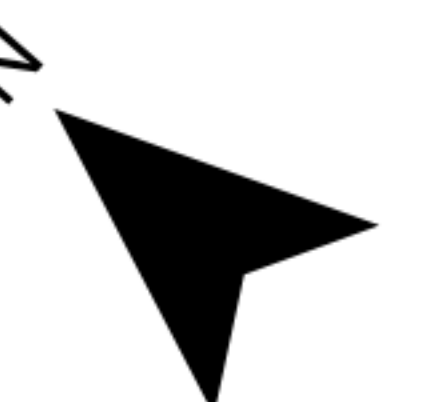


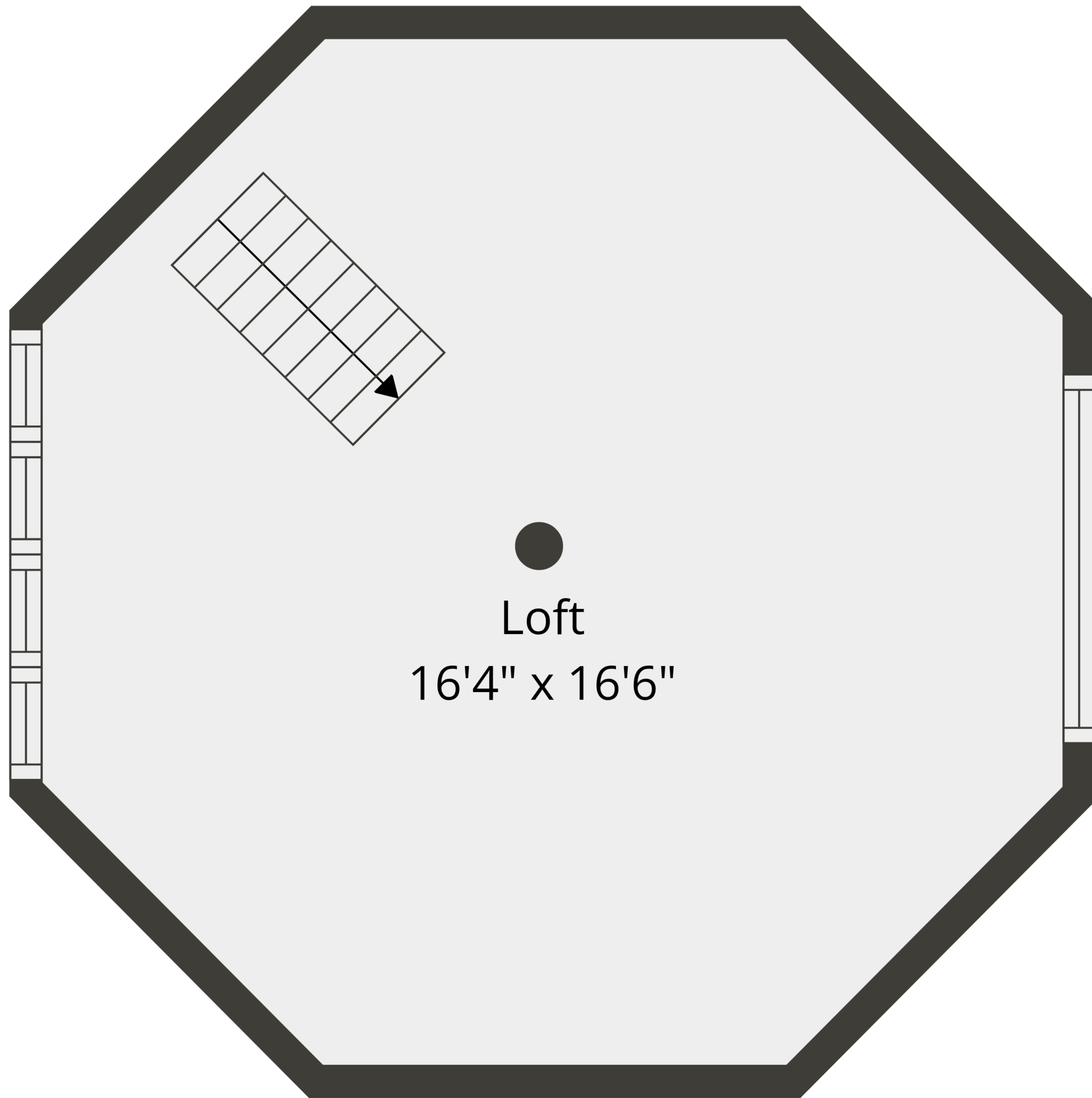
**TOTAL: 1117 sq. ft**

1st floor: 659 sq. ft, 2nd floor: 229 sq. ft, 3rd floor: 229 sq. ft

EXCLUDED AREAS: WALLS: 105 sq. ft

Drawing Scale And Dimensions Are Approximate - Actual Measurements May Vary

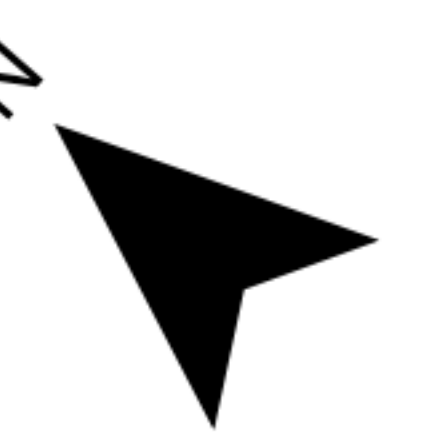


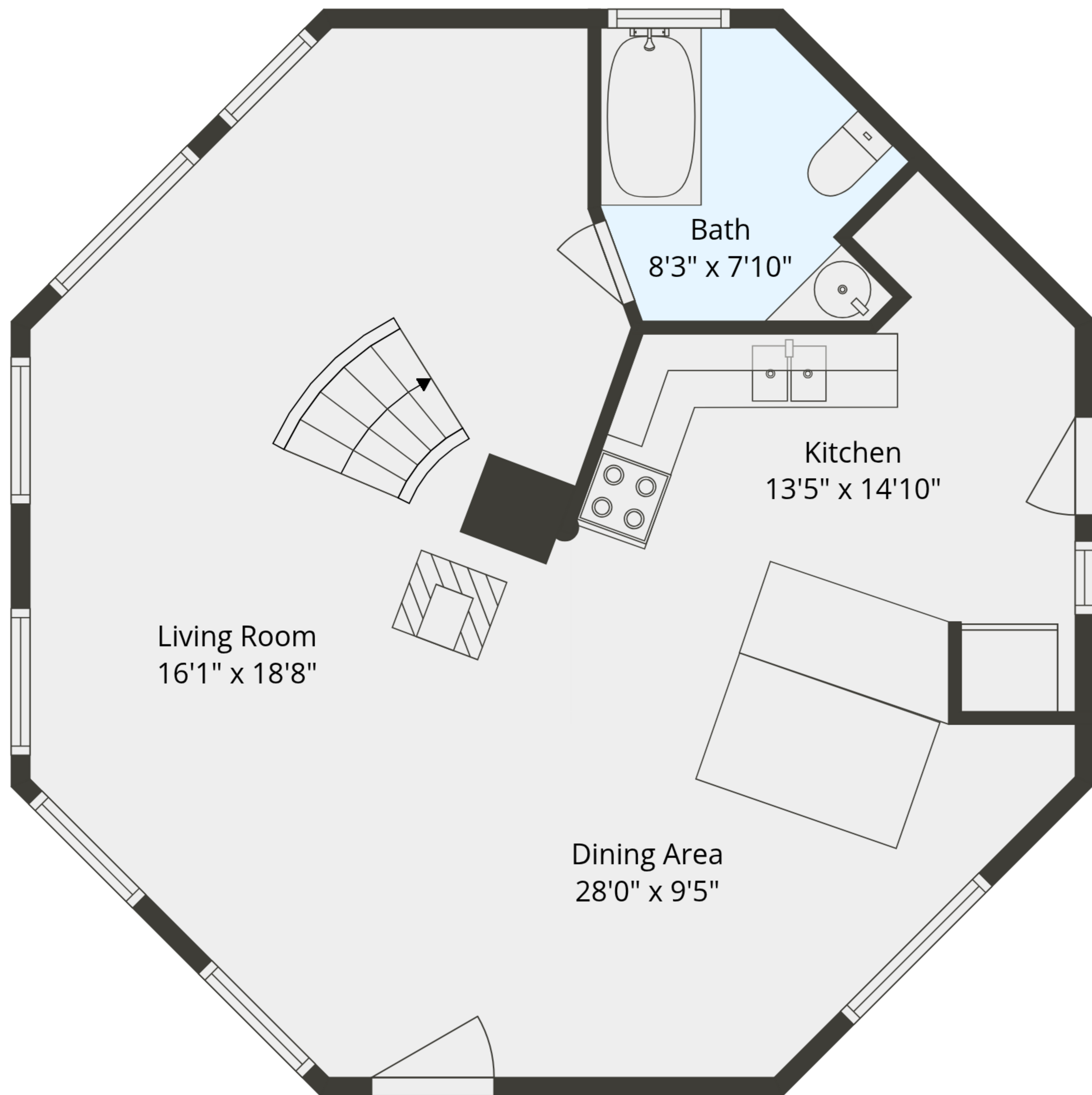


Loft  
16'4" x 16'6"

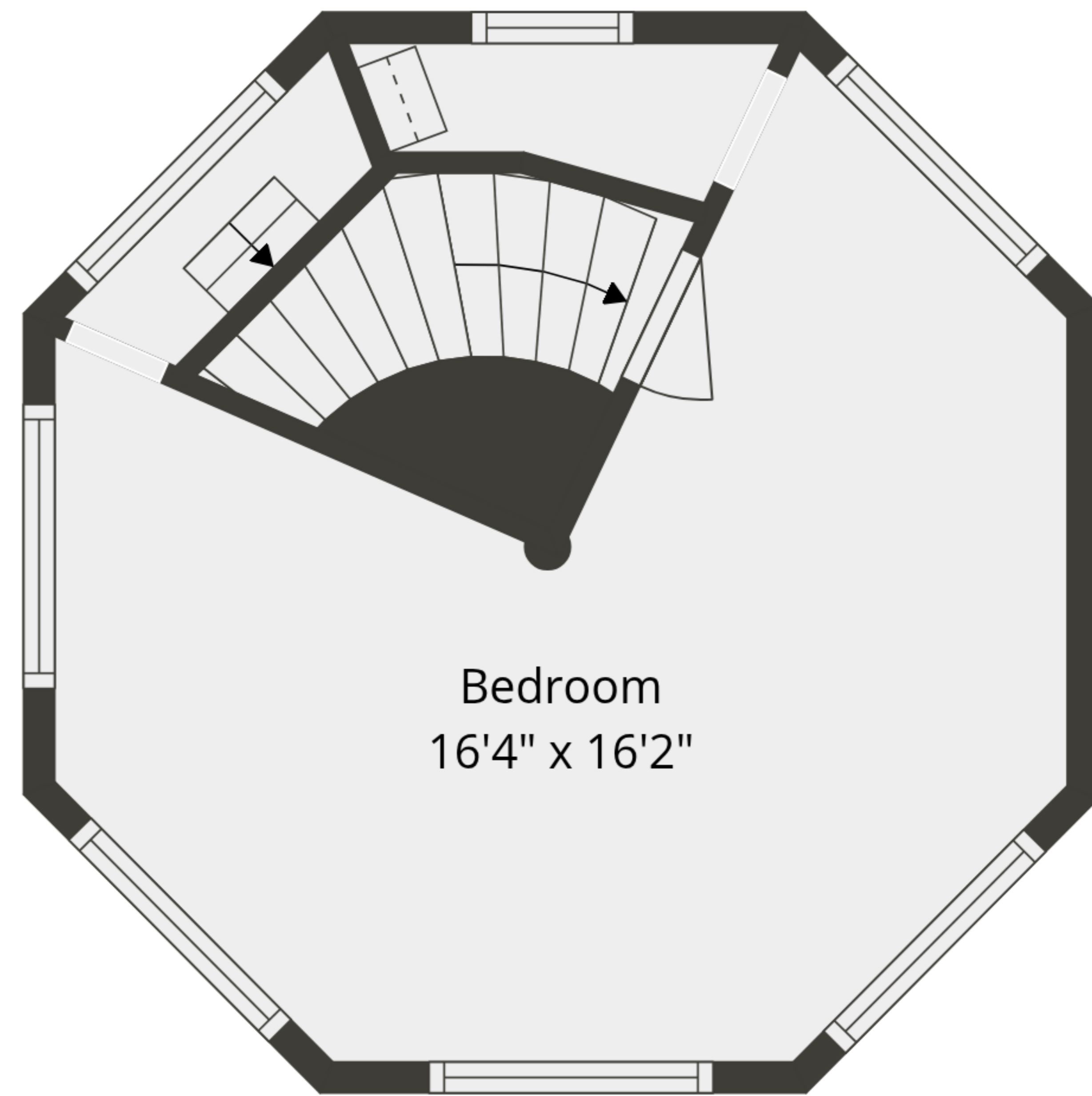
**TOTAL: 1117 sq. ft**  
1st floor: 659 sq. ft, 2nd floor: 229 sq. ft, 3rd floor: 229 sq. ft  
EXCLUDED AREAS: WALLS: 105 sq. ft

Drawing Scale And Dimensions Are Approximate - Actual Measurements May Vary

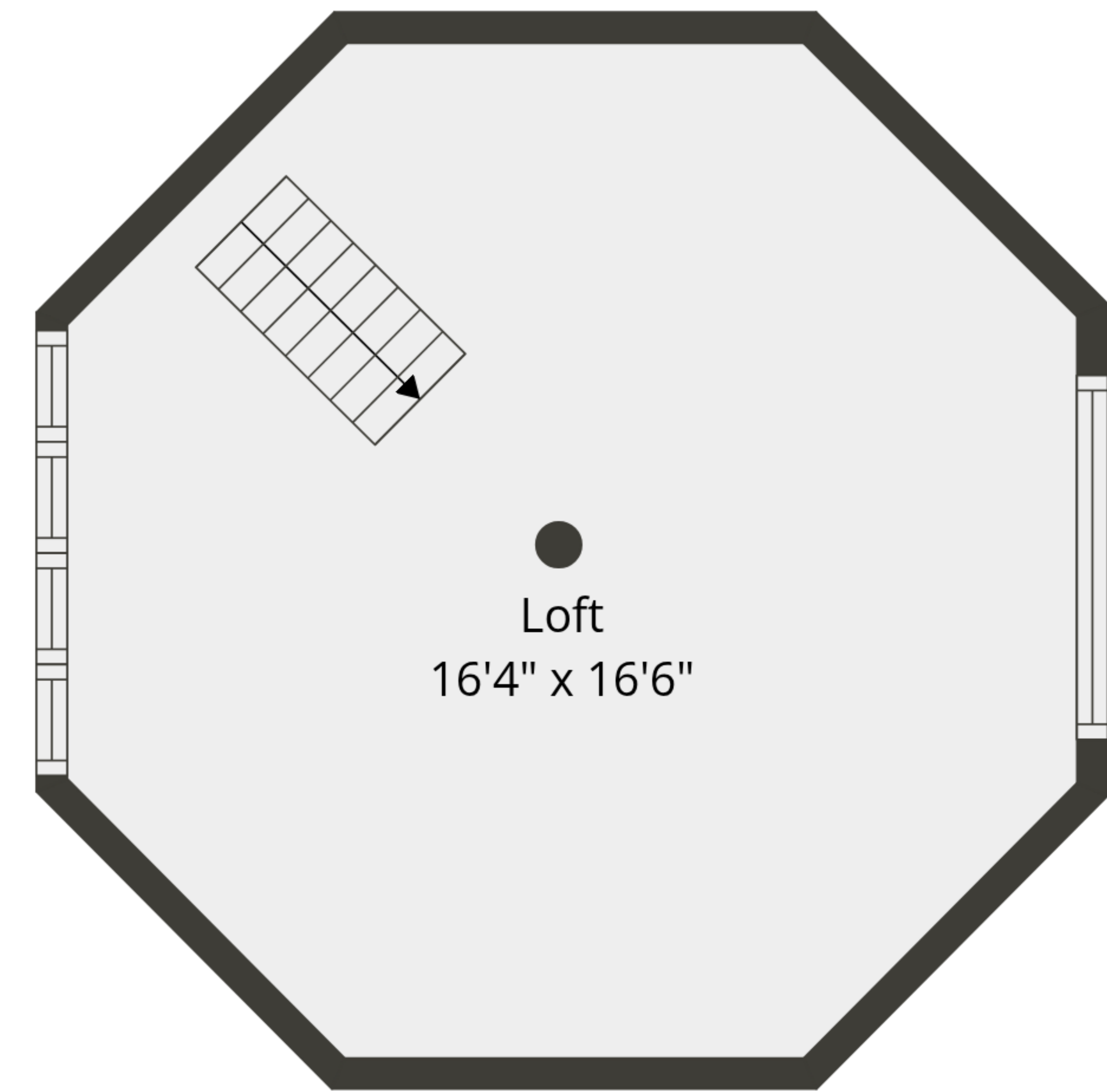




1st Floor



2nd Floor



3rd Floor

**TOTAL: 1117 sq. ft**  
 1st floor: 659 sq. ft, 2nd floor: 229 sq. ft, 3rd floor: 229 sq. ft  
 EXCLUDED AREAS: WALLS: 105 sq. ft

Drawing Scale And Dimensions Are Approximate - Actual Measurements May Vary

