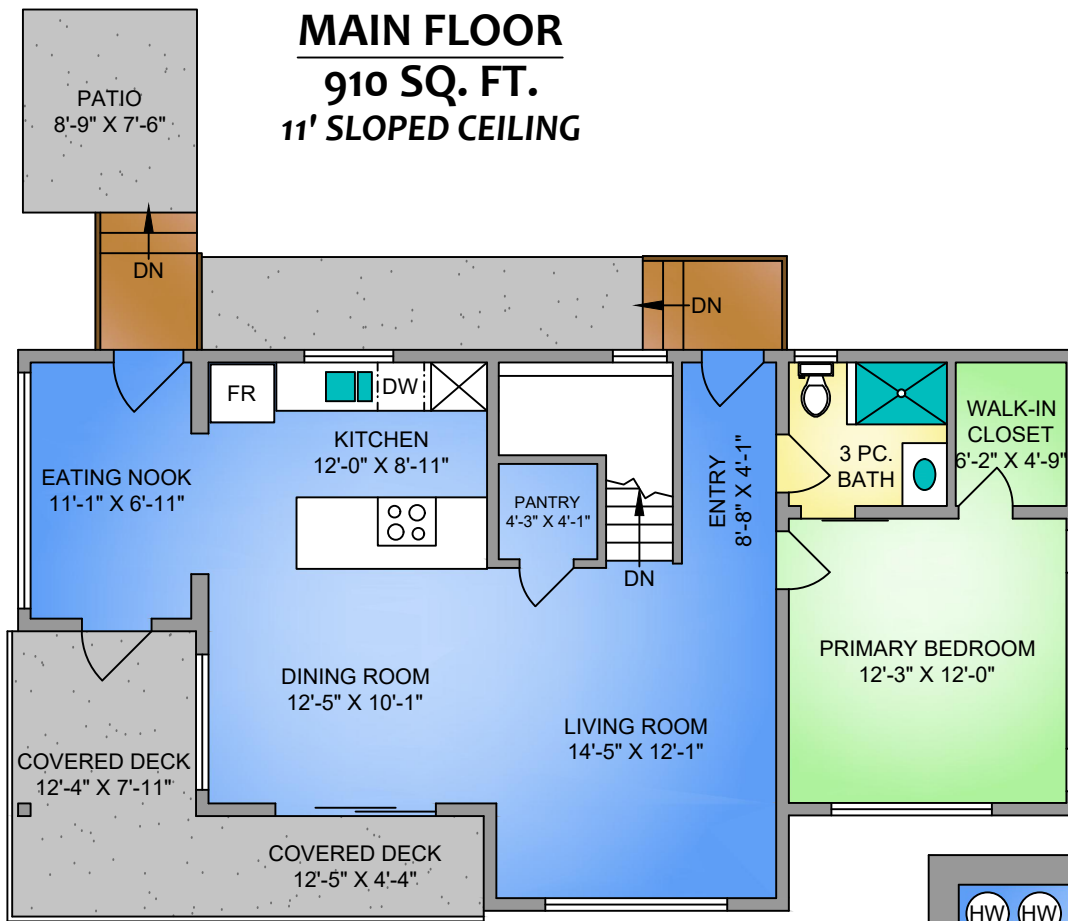


MAIN FLOOR
910 SQ. FT.
11' SLOPED CEILING



1019 VANCOUVER AVENUE
 APRIL 1, 2024
 Prepared by PROPER MEASURE MID ISLAND for the exclusive use of LORI BROTHERS
 Plans may not be 100% accurate. Buyer must verify any critical measurement.
 Private resale or modification of floor plans to a third party by any individual or entity other than Proper Measure
 Mid Island is strictly prohibited

FLOOR	AREA (SQ. FT.)	
	FINISHED	DECK / PATIO
MAIN	910	217
LOWER	893	130
TOTAL	1803	347

LOWER FLOOR
893 SQ. FT.
9' CEILING

