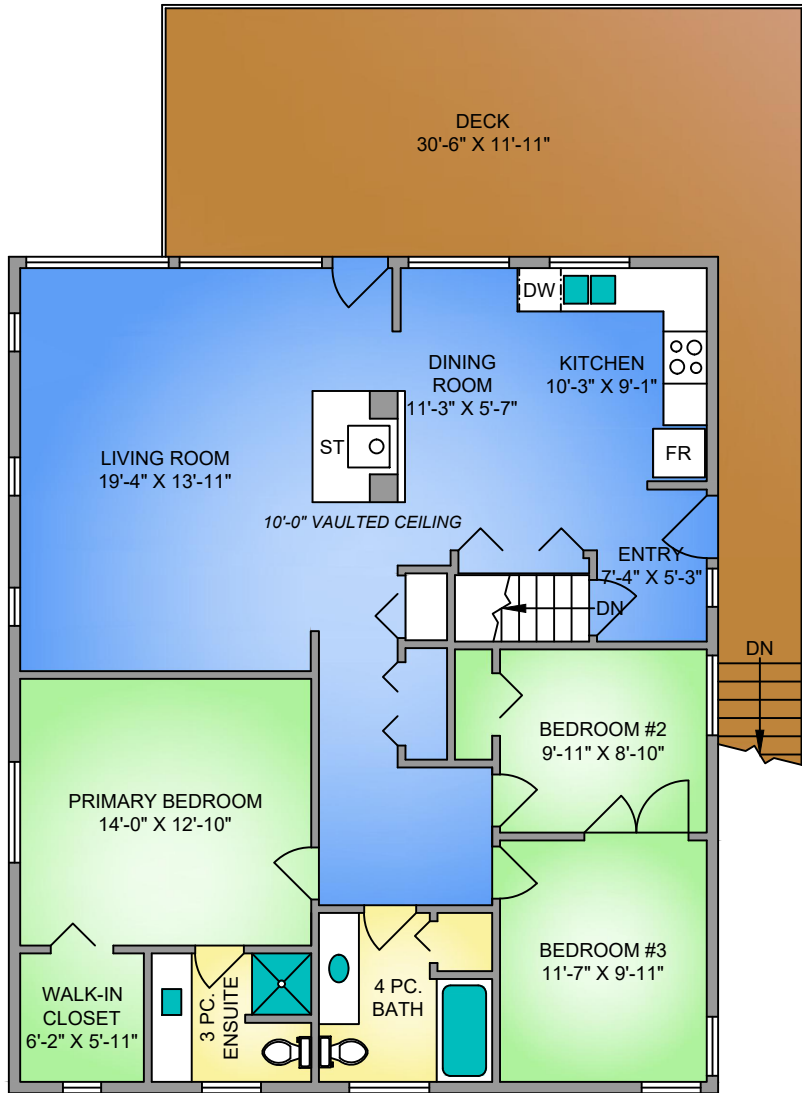


MAIN FLOOR

1365 SQ. FT.

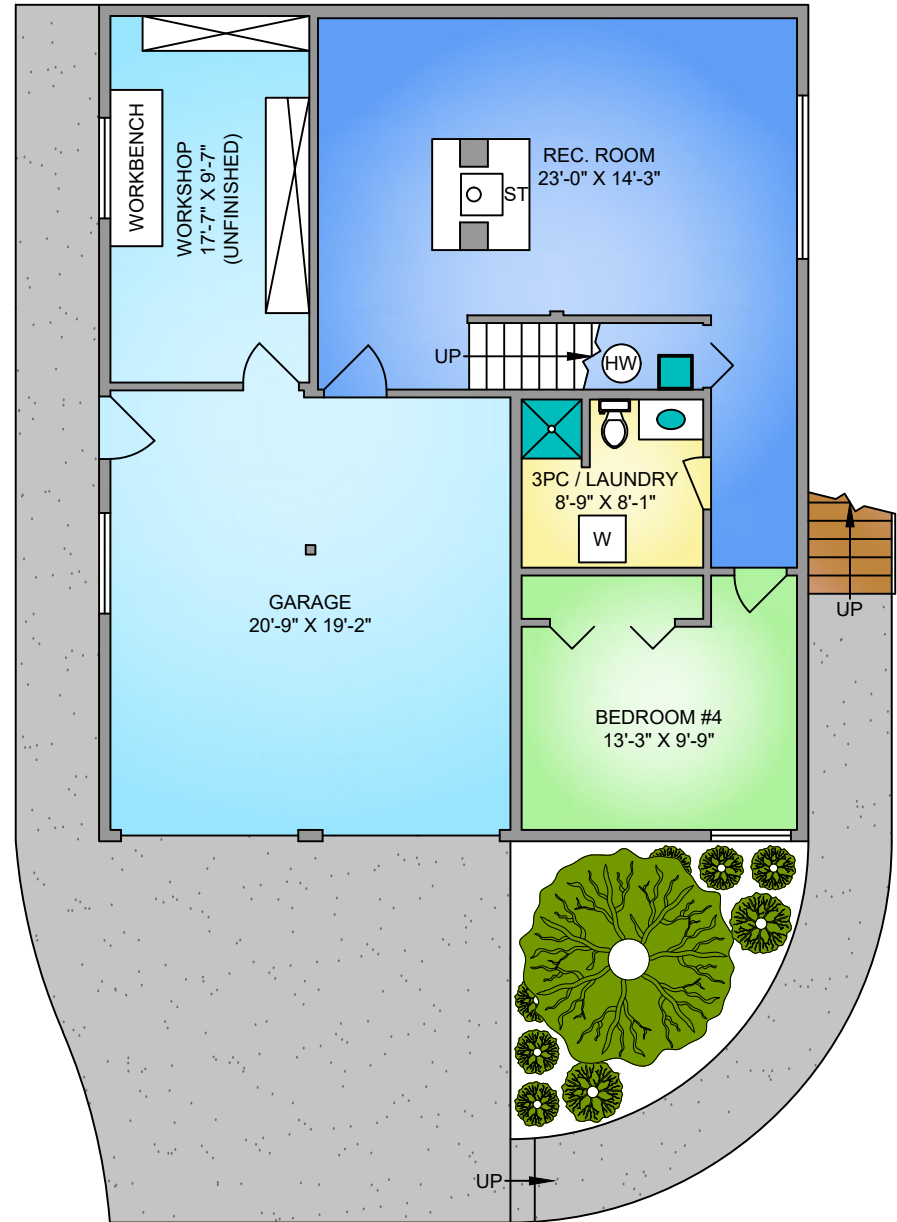
8'-0" CEILING



LOWER FLOOR

942 SQ. FT.

8'-0" CEILING



3642 COTTLEVIEW ROAD

APRIL 1, 2024

Prepared by PROPER MEASURE MID ISLAND for the exclusive use of LORI BROTHERS
 Plans may not be 100% accurate. Buyer must verify any critical measurement.
 Private resale or modification of floor plans to a third party by any individual or entity other than
 Proper Measure Mid Island is strictly prohibited

FLOOR	AREA (SQ. FT.)			
	FINISHED	UNFINISHED	GARAGE	DECK / PATIO
MAIN	1365	-	-	363
LOWER	755	187	423	-
TOTAL	2120	187	423	363

NORTH

