

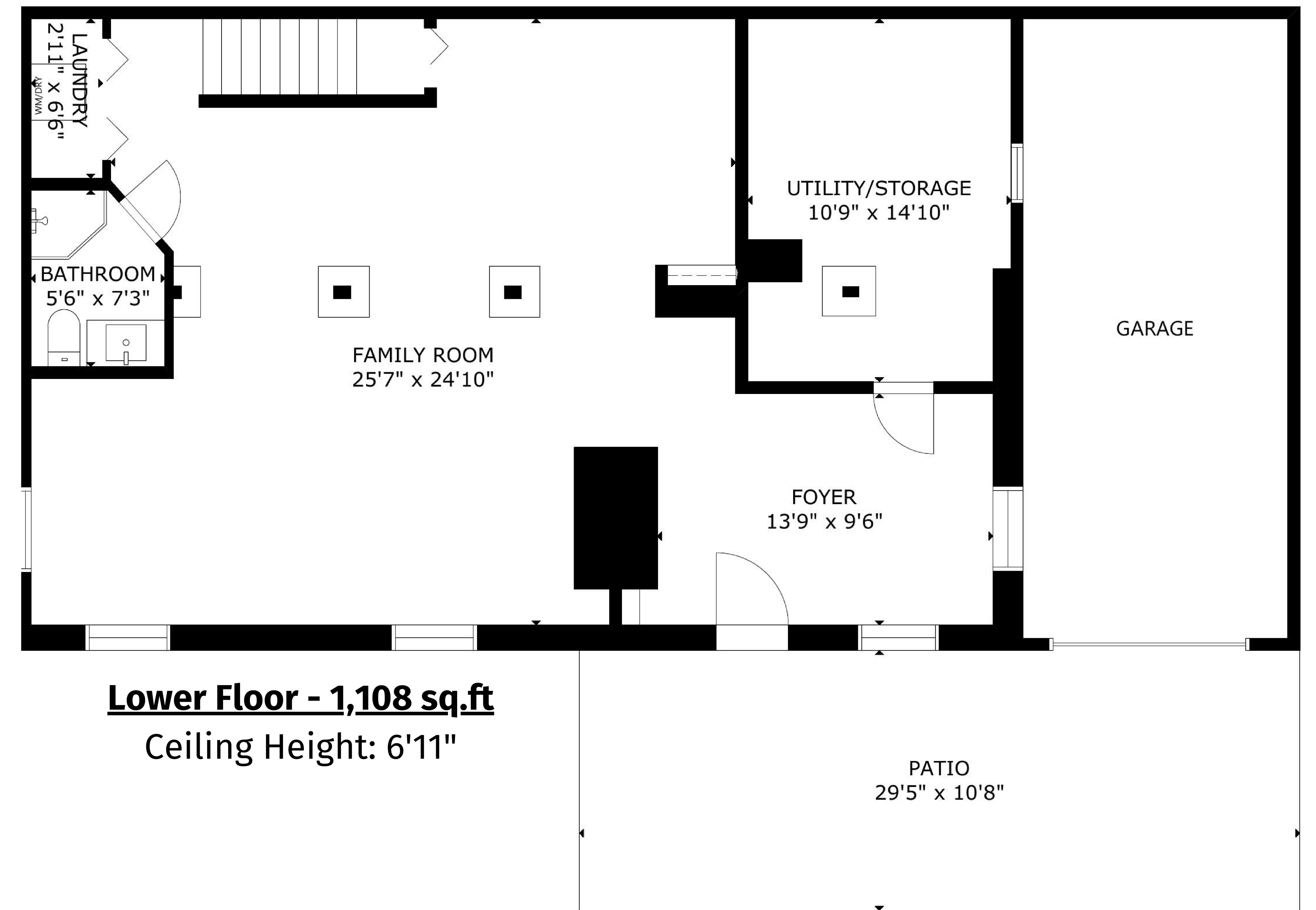
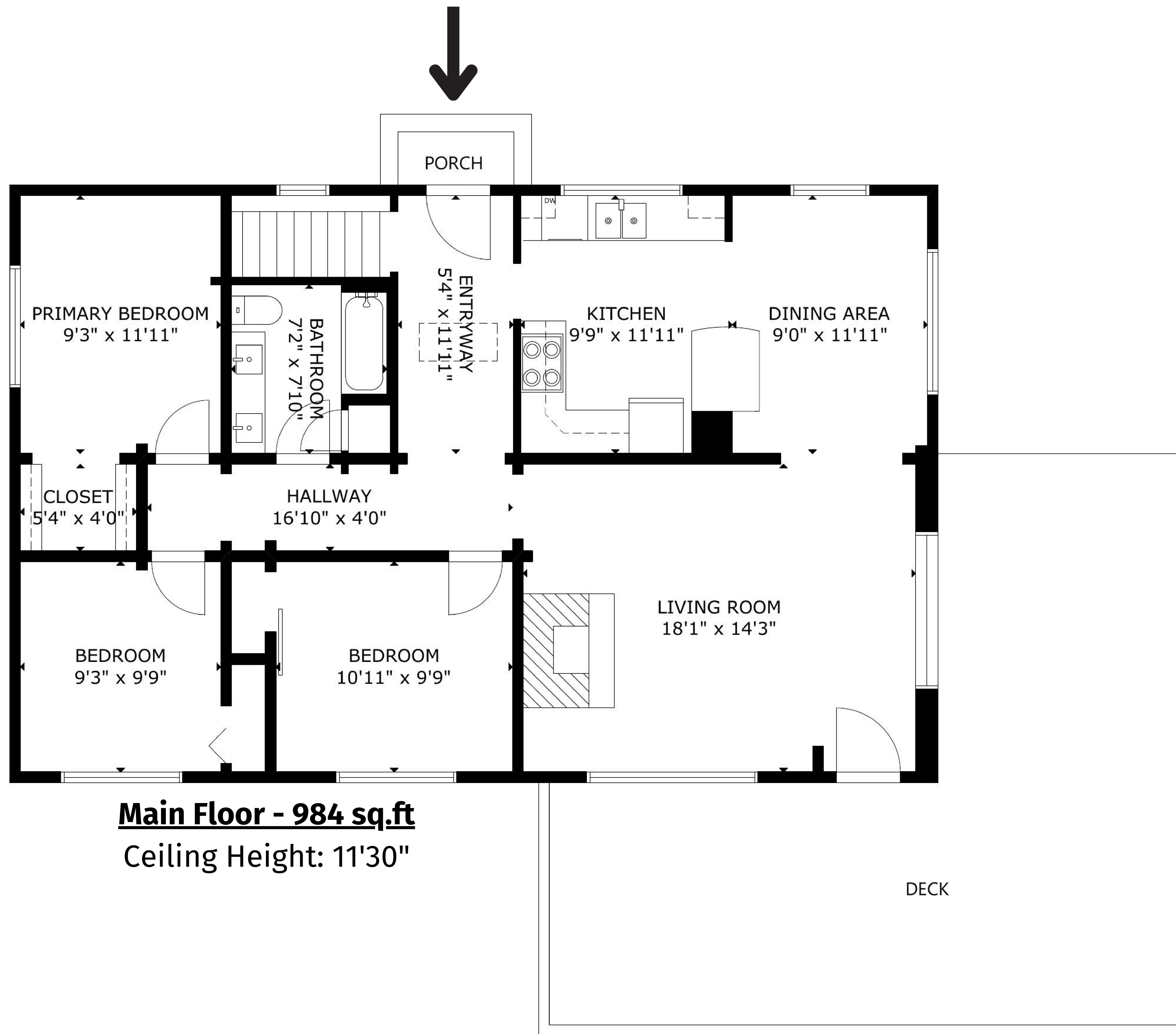


Pamela Hass

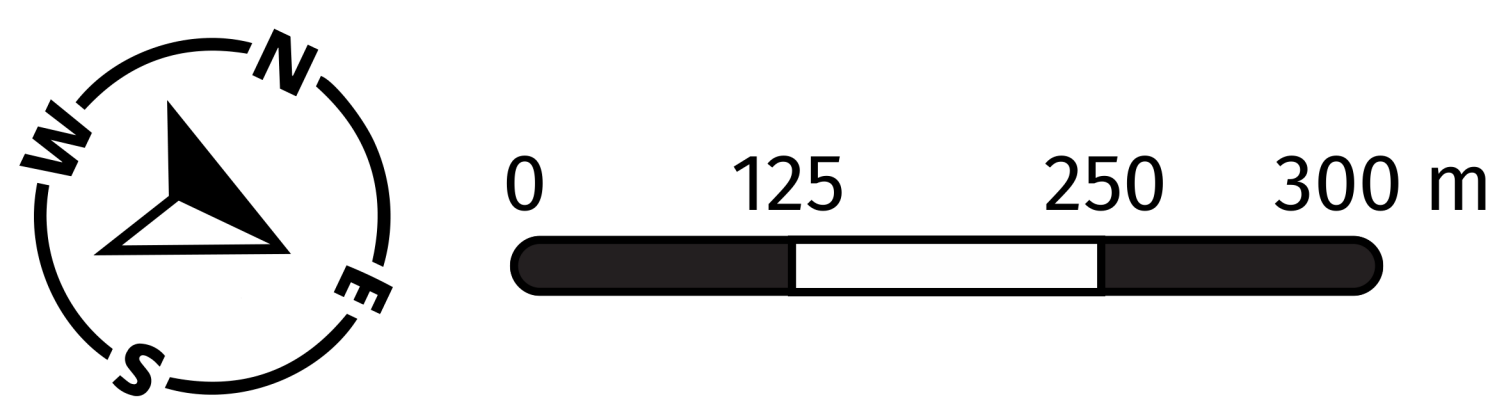
Royal LePage - Desert Oasis Realty Ltd | 250-809-1420 | pamelahass@royallepage.ca

4613 41 Street, Osoyoos, BC

3 BED / 2 BATH



Main Floor:	984 sq.ft.
Lower Floor:	1,108 sq.ft.
Total Livable SQ.FT:	2,092 sq.ft.
Patio:	313 sq.ft.
Total Excluded Areas:	313 sq.ft.
Total SQ.FT:	2,405 sq.ft.



778-955-9601

www.itshomephotography.com

MEASURED ON: (2023-05-08)

Total square foot calculated to gross unit area. SQFT based on interior measurements and not taken from original blueprints, may include unfinished area. This is for marketing purposes only and is not intended for architectural/construction use. All details, sizes & placements should be considered approximate within +/- 2% tolerance.

