



Pamela Hass

Royal LePage - Desert Oasis Realty Ltd | 250-809-1420 | pamelahass@royallepage.ca

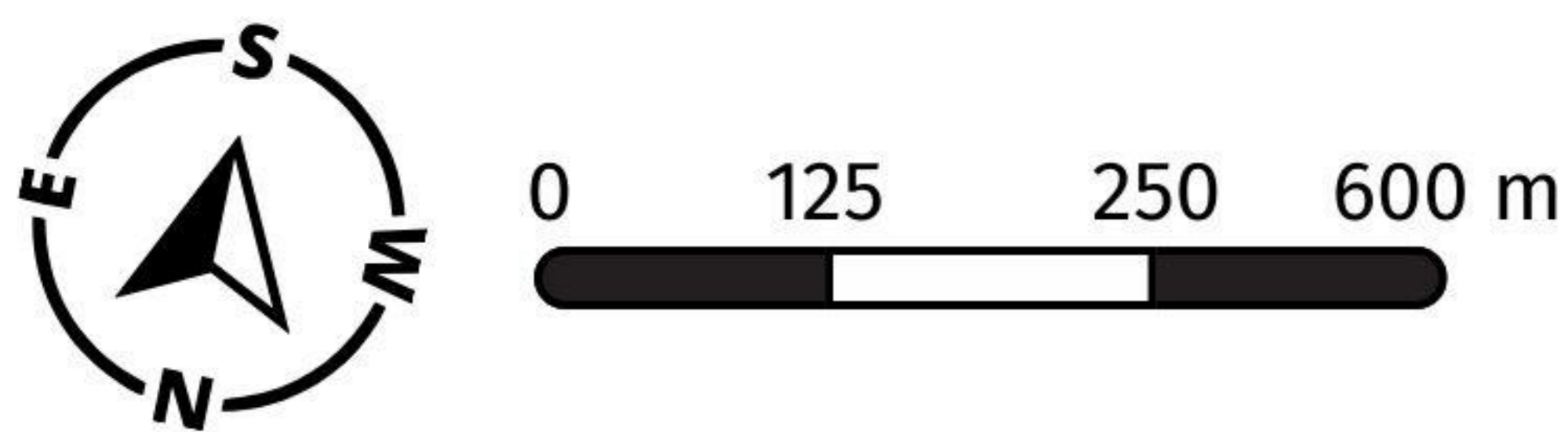
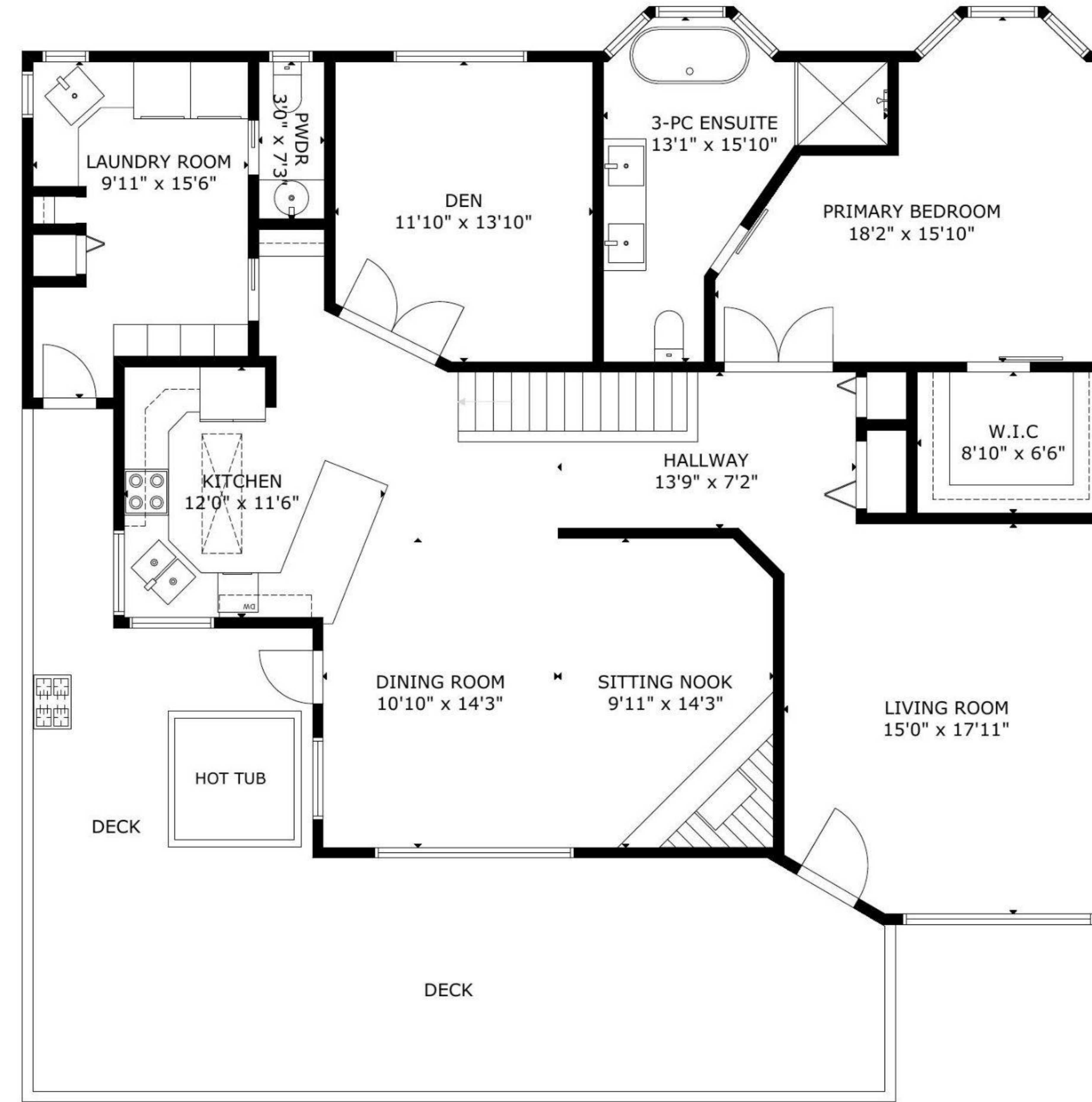
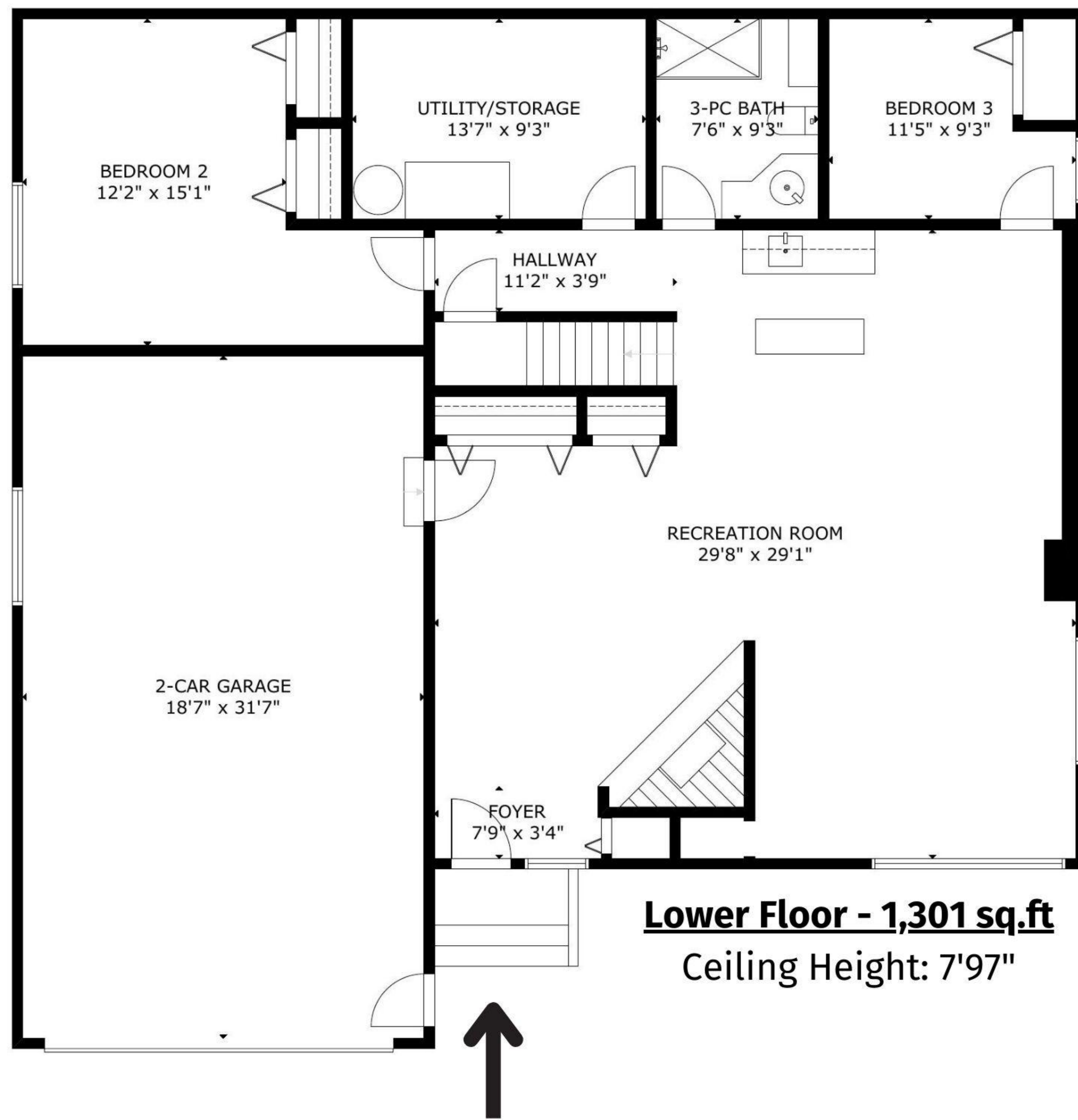
113 Par Blvd, Kaleden, BC

3 BED & DEN / 3 BATH

Lower Floor:	1,301 sq.ft.
Main Floor:	1,670 sq.ft.
<b>Total Livable SQ.FT:</b>	<b>2,971 sq.ft.</b>

Garage:	587 sq.ft.
UTL/Storage (Unfinished)	126 sq.ft.
<b>Total Excluded Areas:</b>	<b>713 sq.ft.</b>

<b>Total SQ.FT:</b>	<b>3,684 sq.ft.</b>
---------------------	---------------------



778-955-9601

[www.itshomephotography.com](http://www.itshomephotography.com)

MEASURED ON: (2023-12-14)

Total square foot calculated to gross unit area. SQFT based on interior measurements and not taken from original blueprints, may include unfinished area. This is for marketing purposes only and is not intended for architectural/construction use. All details, sizes & placements should be considered approximate within +/- 2% tolerance.

