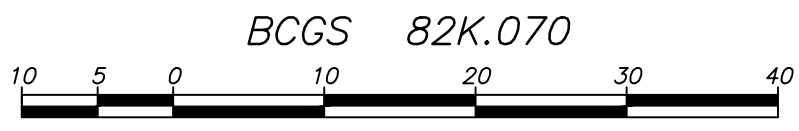


REFERENCE PLAN OF COVENANT OVER
PARTS OF STRATA LOTS 10-19 INCLUSIVE,
DISTRICT LOTS 272 AND 486,
KOOTENAY DISTRICT, STRATA PLAN NES3618
Pursuant to Section 99(1)(e) of the Land Title Act

PLAN EPP _____



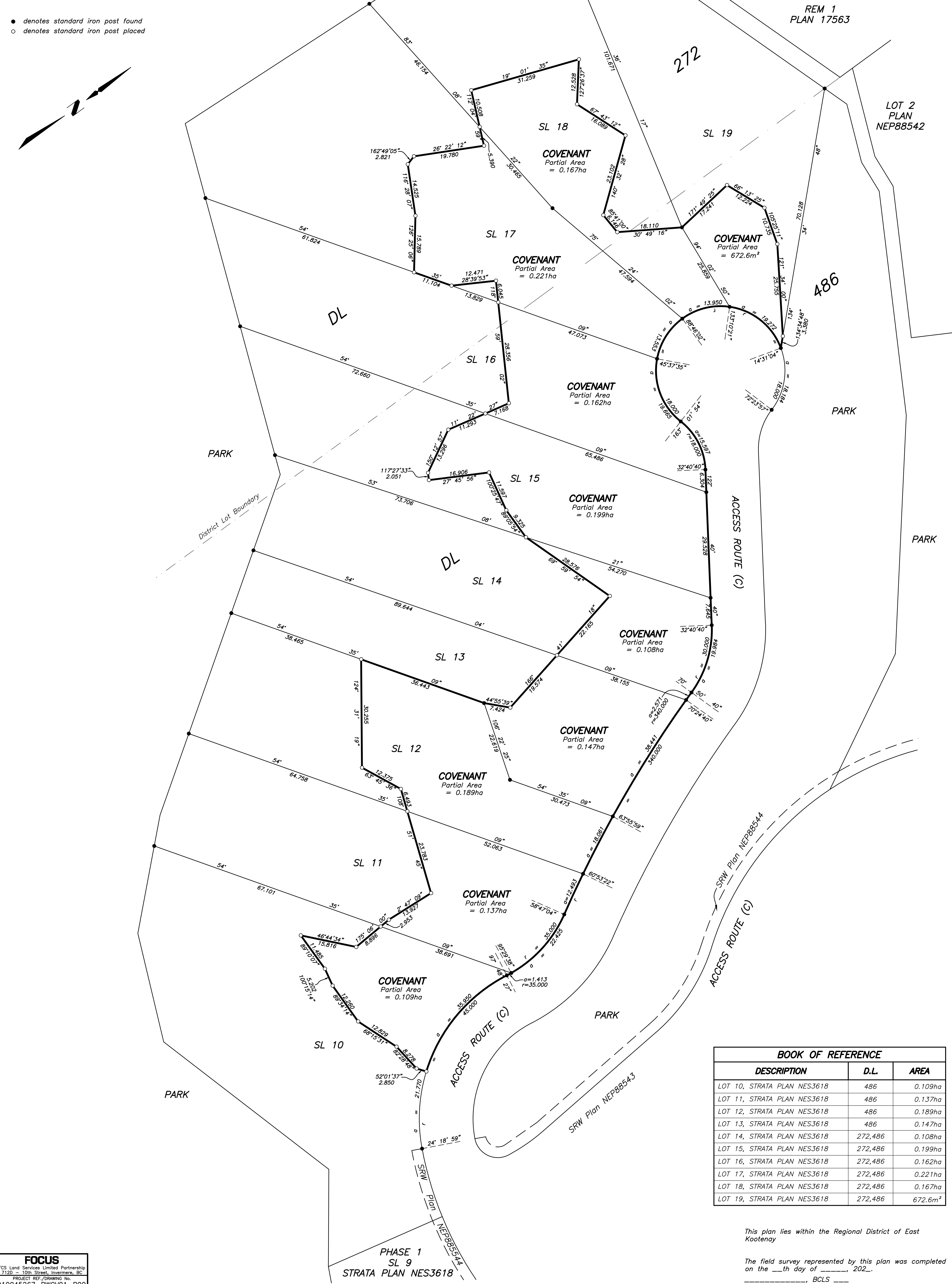
The intended plot size of this plan is 560mm in width by 864mm in height (D size) when plotted at a scale of 1:500.

LEGEND

Bearings are astronomic, derived from Strata Plan NES3618.

- denotes standard iron post found
- denotes standard iron post placed

PRELIMINARY



BOOK OF REFERENCE		
DESCRIPTION	D.L.	AREA
LOT 10, STRATA PLAN NES3618	486	0.109ha
LOT 11, STRATA PLAN NES3618	486	0.137ha
LOT 12, STRATA PLAN NES3618	486	0.189ha
LOT 13, STRATA PLAN NES3618	486	0.147ha
LOT 14, STRATA PLAN NES3618	272,486	0.108ha
LOT 15, STRATA PLAN NES3618	272,486	0.199ha
LOT 16, STRATA PLAN NES3618	272,486	0.162ha
LOT 17, STRATA PLAN NES3618	272,486	0.221ha
LOT 18, STRATA PLAN NES3618	272,486	0.167ha
LOT 19, STRATA PLAN NES3618	272,486	672.6m ²

This plan lies within the Regional District of East Kootenay

The field survey represented by this plan was completed on the ____th day of _____, 202__.

C:\Users\jlevesque\Desktop\Reference\010045267\010045267-RWC01-000.dwg