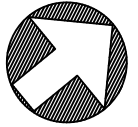
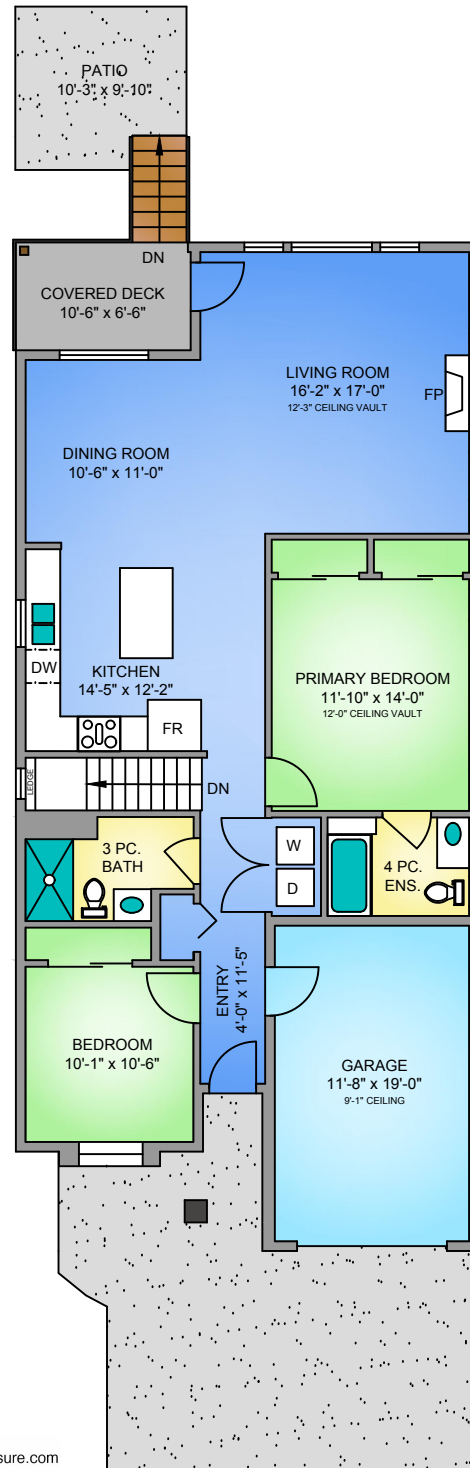


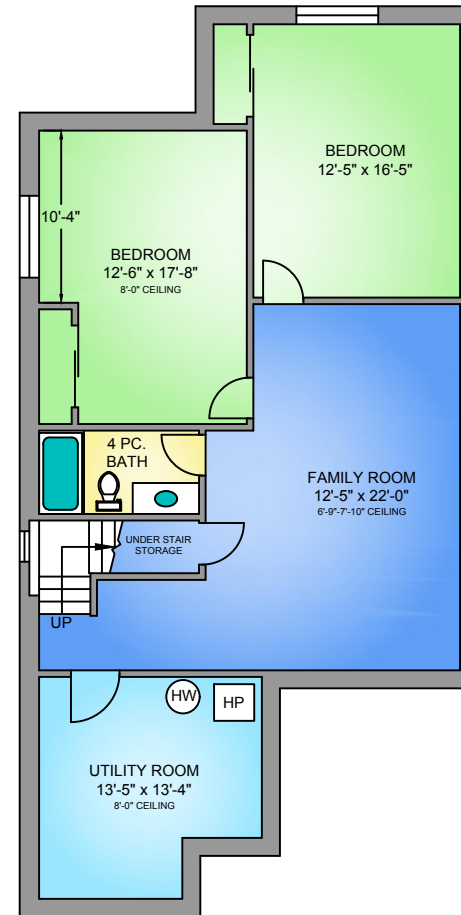
NORTH



MAIN FLOOR **1276 SQ. FT.** 9'-0"-12'-3 CEILING



LOWER FLOOR **1098 SQ. FT. (FINISHED)** **160 SQ. FT. (UNFINISHED)** 8'-0" CEILING



135 VILLAGE WAY AUGUST 8, 2023					
PREPARED FOR THE EXCLUSIVE USE OF THERESA CARTER. PLANS MAY NOT BE 100% ACCURATE, IF CRITICAL BUYER TO VERIFY.					
FLOOR	TOTAL	AREA (SQ. FT.)			
		FINISHED	UNFINISHED	GARAGE	DECK / PATIO
MAIN	1276	1276	-	245	160
LOWER	1258	1098	160	-	-
TOTAL	2534	2374	160	245	160