

1926 Pine Ridge Mountain Link

ANSI/BOMA Z76.5-2021 - INVERMERE, BC

MAIN LEVEL (AG) - 2047.15 Sq.Ft.

BASEMENT DEVELOPED AREA (BG) - 1526.06 Sq.Ft.

GROSS LIVING AREA (GLA) - 3573.21 Sq.Ft.

BASEMENT UNDEVELOPED AREA (BG) - 200.02 Sq.Ft.

TOTAL LIVING AREA (AG/BG) - 3773.23 Sq.Ft.

DATE COMPLETED: MAY 17, 2024

PROPERTY TYPE: DETACHED

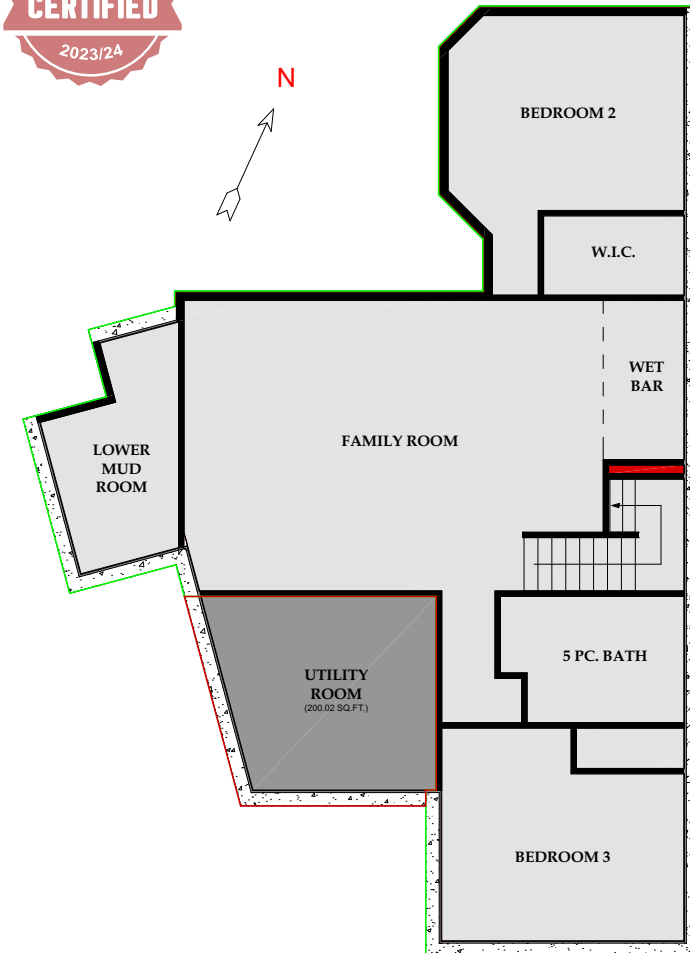
KEVIN THYGESEN // REMAX INVERMERE

info@urbanmeasure.com

Calgary | Edmonton, AB

403.827.4420 | 587.598.4420

Toll Free : 1.844.504.4420



The Schematic Drawing shows the following depending on the style of property:

For Apartment Style Condominiums the measurements represented above are Interior Measurements in accordance with Principle 4 of the RMS as of Jan 1st 2024

For Detached, Semi-Detached, and Townhome Properties the measurements represented above are Exterior Foundation Surface Measurements in accordance with Principle 3 of the RMS as of Jan 1st 2024

RMS MEASURING | FLOOR PLANS | PHOTOS | VIDEOS | AERIAL | MATTERPORT 3D | RENDERINGS | VIRTUAL STAGING

Disclaimer: All total Sq.Ft. measurements completed and insured by UrbanMeasure Inc. using the RMS Guide as prepared by RECA. Measurement Insurance provided is to be considered void without payment and/or altered in anyway. Total Sq.Ft. measurements are based on the area within the allowed perimeter of the home or condo, not by multiplying room sizes. They DO NOT include decks, patios, garages, vaulted "open to below" areas, plant ledge windows, areas with floor to ceiling heights below five feet, and fireplace cantilevers. For more information on the residential measurement standard (RMS) please visit: <https://www.reca.ca>