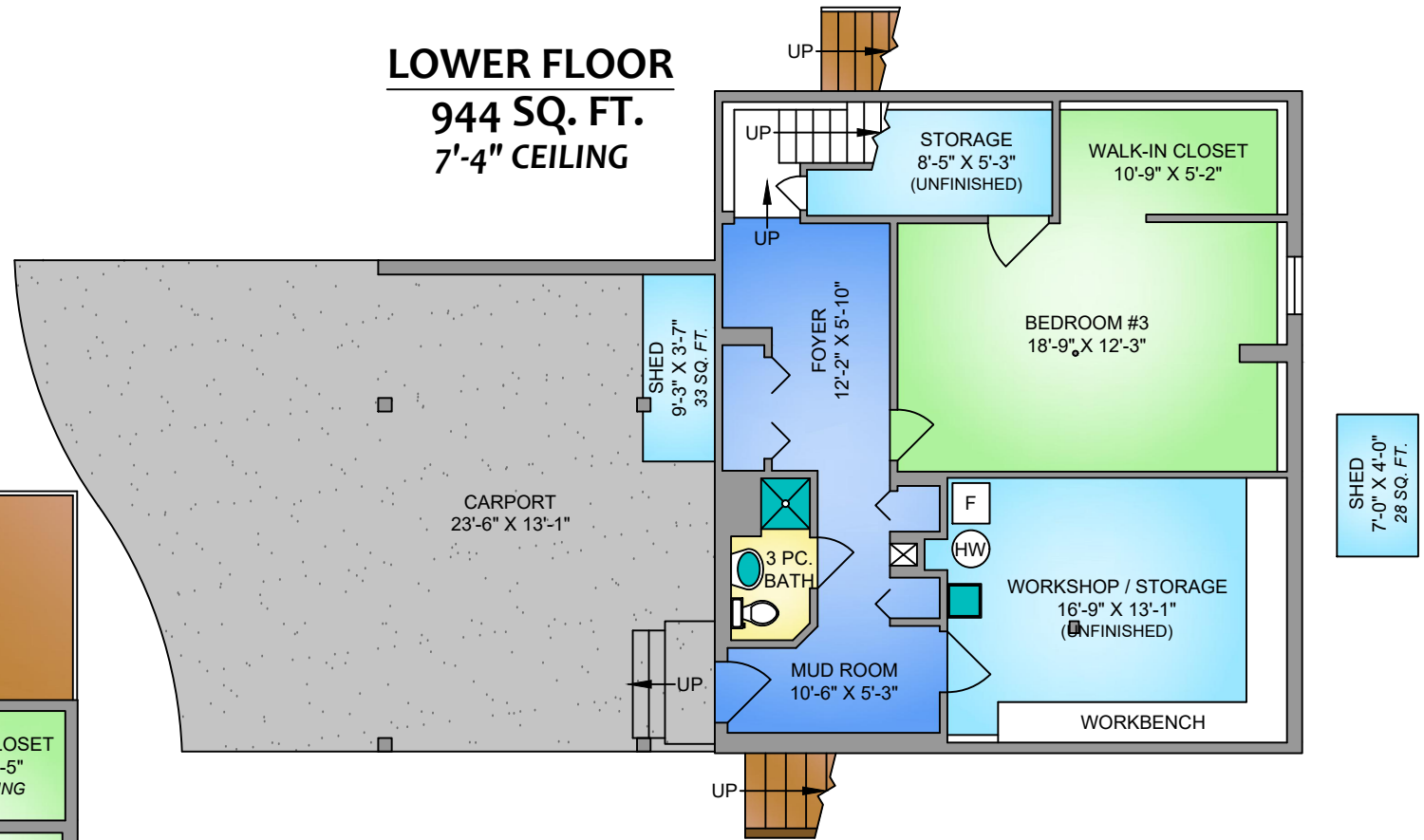
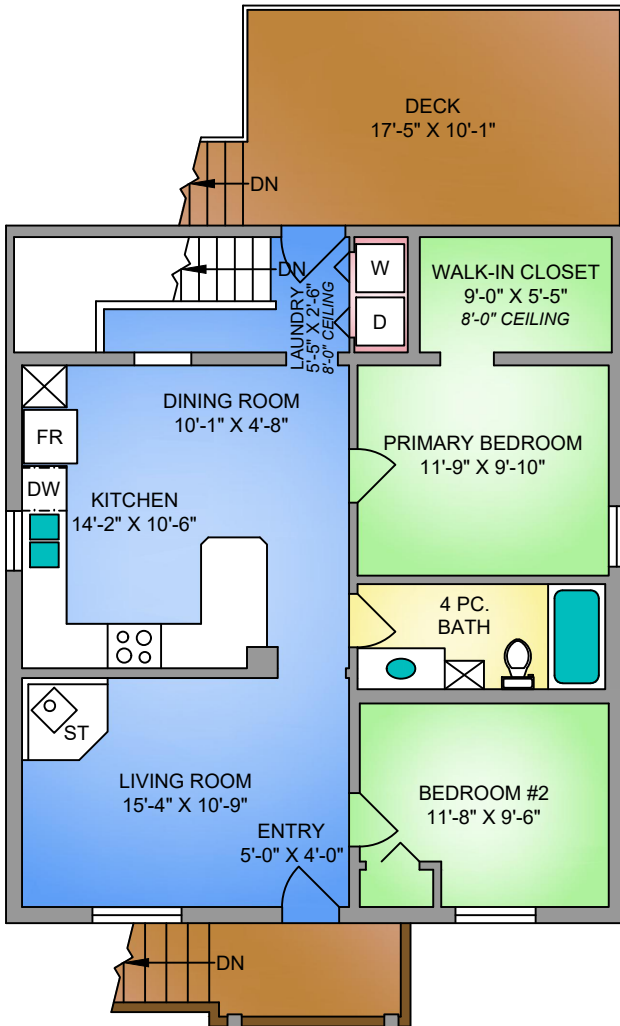


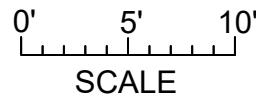
**LOWER FLOOR**  
944 SQ. FT.  
7'-4" CEILING



**MAIN FLOOR**  
944 SQ. FT.  
9'-5" CEILING



NORTH



9 MACHLEARY STREET APRIL 19, 2024			
Prepared by PROPER MEASURE MID ISLAND for the exclusive use of LORI BROTHERS Plans may not be 100% accurate. Buyer must verify any critical measurement. Private resale or modification of floor plans to a third party by any individual or entity other than Proper Measure Mid Island is strictly prohibited			
FLOOR	AREA (SQ. FT.)		
	FINISHED	UNFINISHED	DECK / PATIO
MAIN	944	-	176
LOWER	645	299	-
<b>TOTAL</b>	<b>1589</b>	<b>299</b>	<b>176</b>