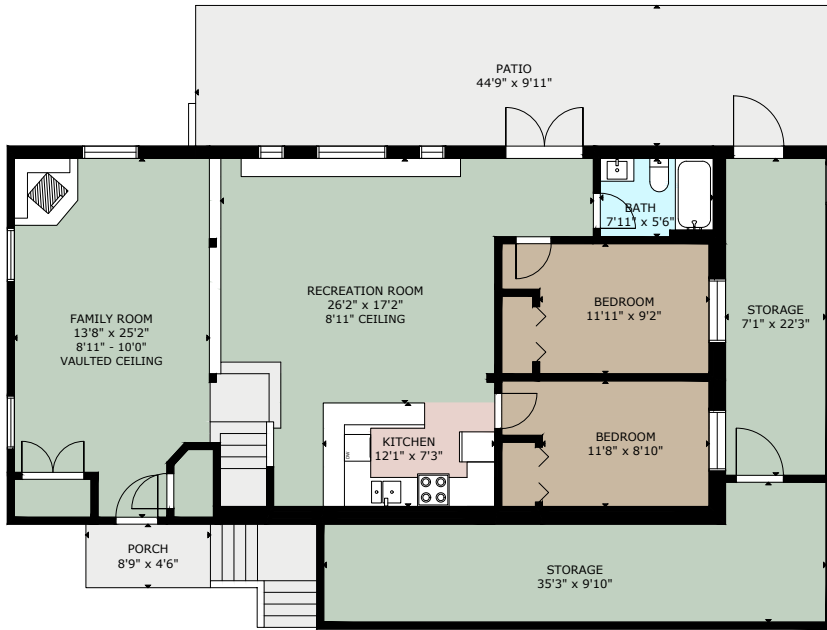
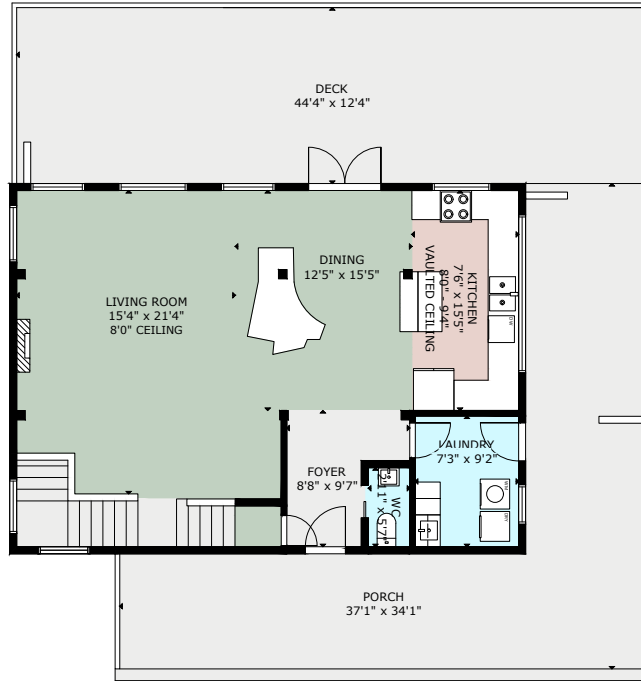


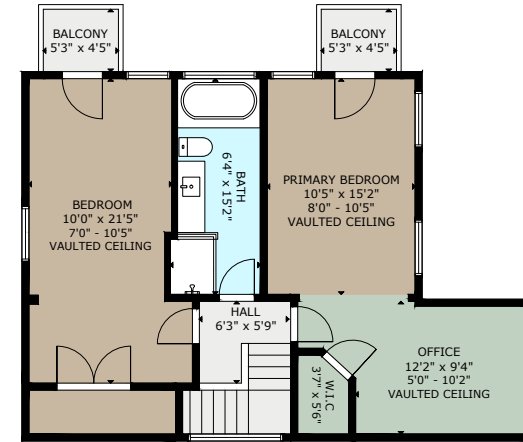
LOWER FLOOR
1,280 SQ. FT.



MAIN FLOOR
942 SQ. FT.



UPPER FLOOR
809 SQ. FT.



10360 YOUNG ROAD

| | FINISHED | STORAGE | DECK/PATIO | PORCH | BALCONY |
|--------------|-------------|------------|------------|------------|-----------|
| MAIN | 942 | - | 547 | 523 | - |
| UPPER | 809 | - | - | - | - |
| LOWER | 1280 | 424 | 442 | 39 | 46 |
| TOTAL | 3031 | 424 | 989 | 562 | 46 |

SIZE AND DIMENSIONS ARE APPROXIMATE, ACTUAL MAY VARY
PREPARED FOR THE EXCLUSIVE USE OF

SANDRA CARSWELL

MEASURED ON 06/23/23, BY STELLAR REAL ESTATE MARKETING
www.stellarca.ca | + (250) 929 1888 | info@stellarca.ca

