

LOWER FLOOR

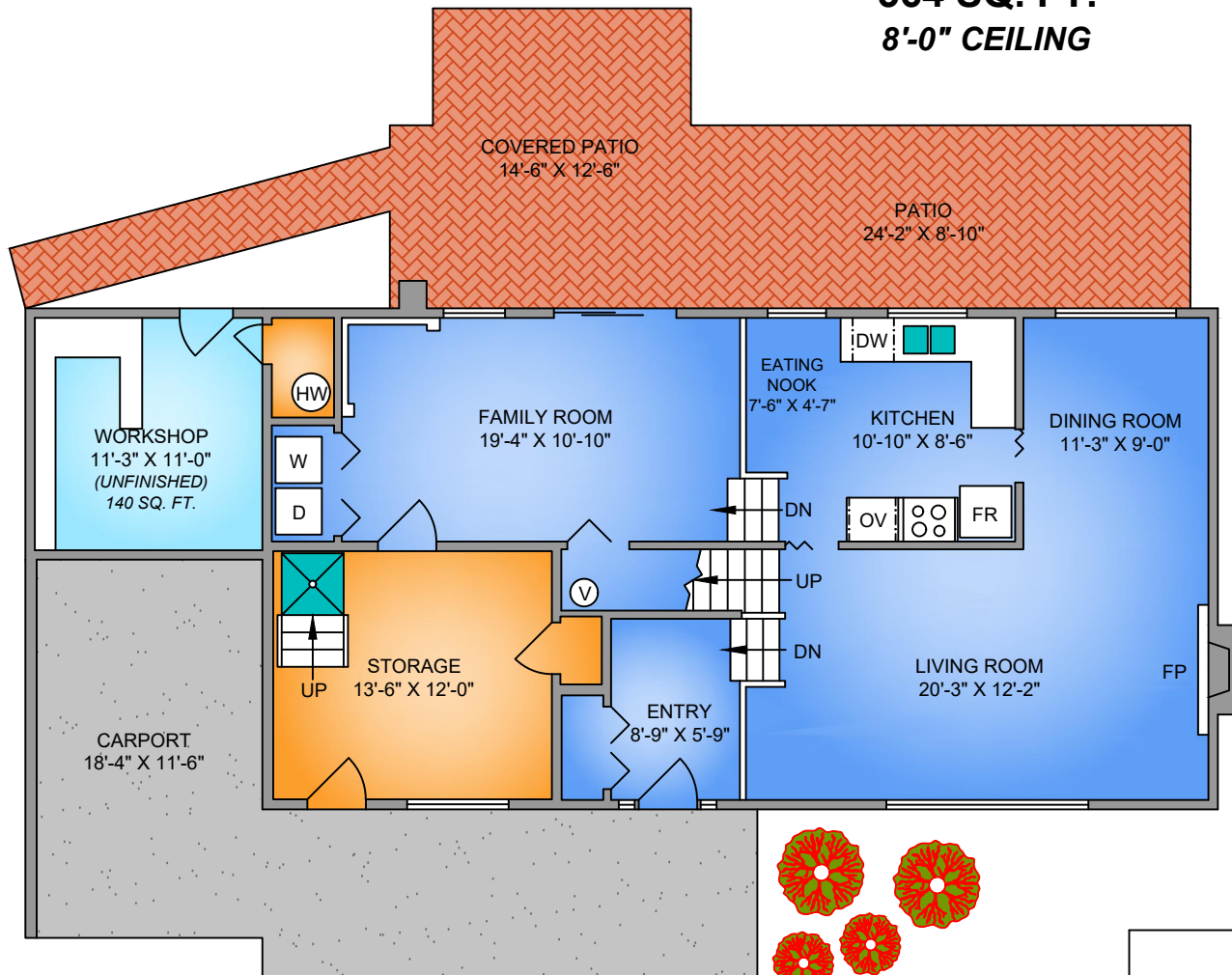
562 SQ. FT.

8'-0" CEILING

MAIN FLOOR

564 SQ. FT.

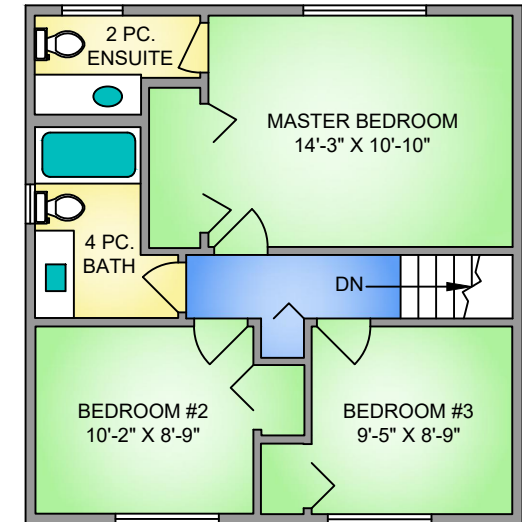
8'-0" CEILING



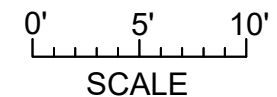
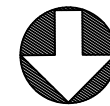
UPPER FLOOR

564 SQ. FT.

8'-0" CEILING



NORTH



452 DOGWOOD ROAD
SEPTEMBER 18, 2020

Prepared by PROPER MEASURE MID ISLAND for the exclusive use of NANCY BOLCH
Plans may not be 100% accurate. Buyer must verify any critical measurement.

Private resale or modification of floor plans to a third party by any individual or entity other than Proper Measure Mid Island is strictly prohibited

FLOOR	AREA (SQ. FT.)	
	FINISHED	DECK / PATIO
MAIN	564	-
UPPER	564	-
LOWER	562	413
TOTAL	1690	413