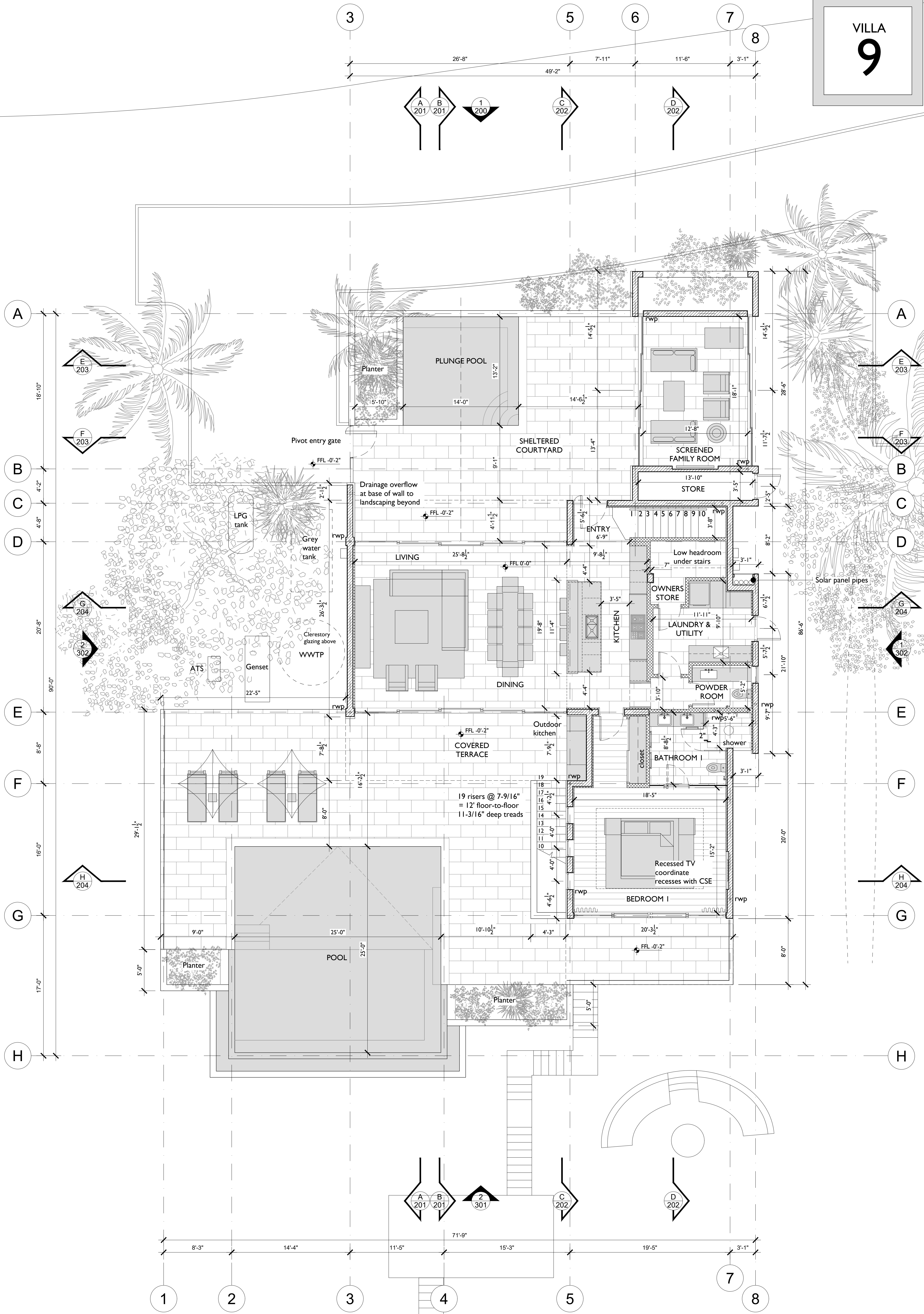
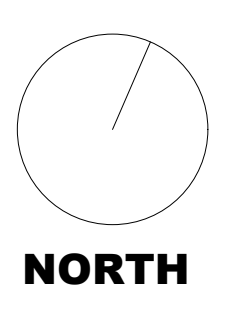


# VILLA 9



**101 LEVEL I PLAN**  
3/16" = 1'-0"

revisions  
 A - 06.01.21 - First Issue (MJB)  
 B - 08.03.22 - Issued for Planning (MJB)

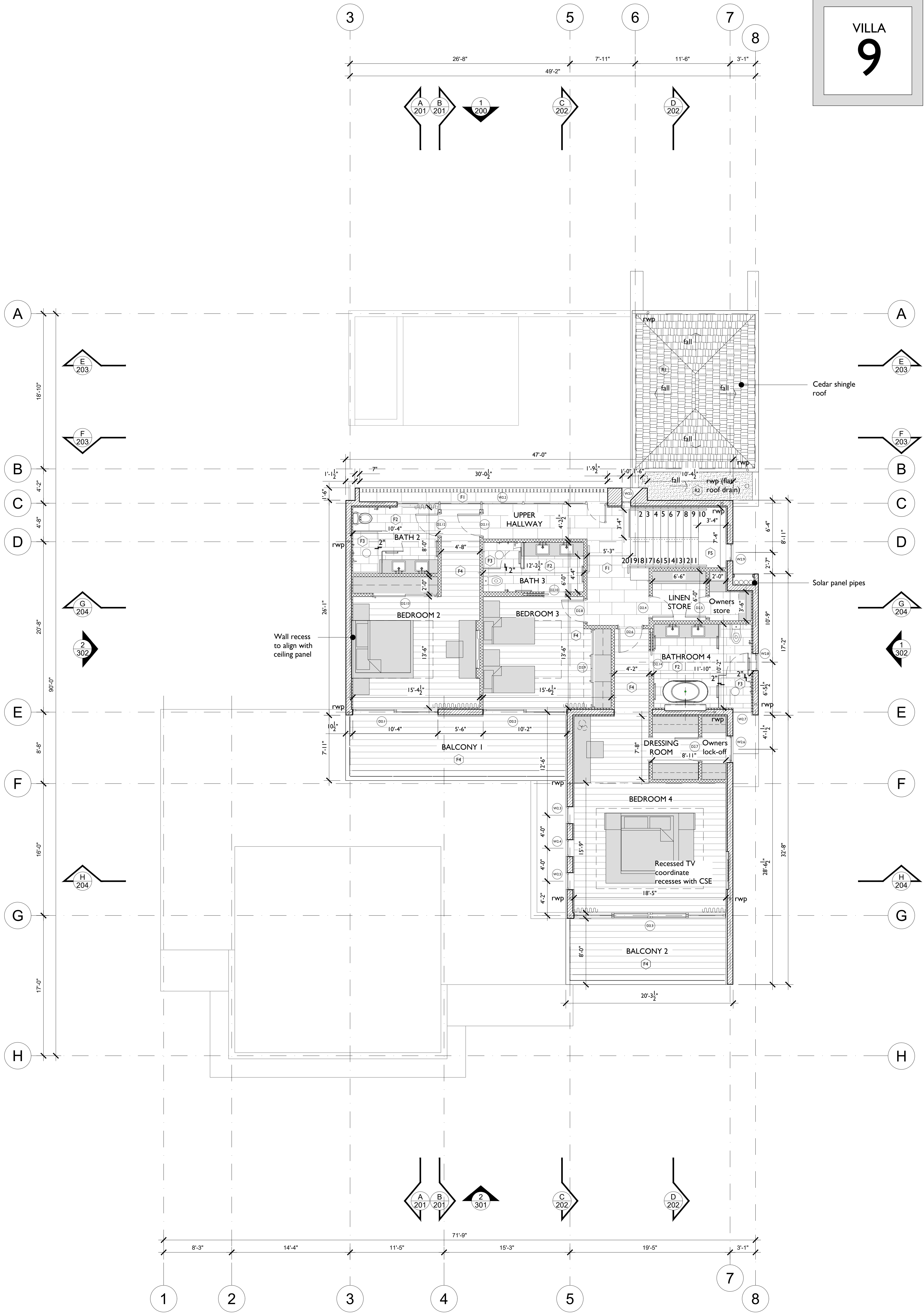


client	Wymara Developments Ltd				
project	Wymara Villas - Villa 9				
drawn	Level I Plan				
scale	3/16" = 1'-0" @ 24" x 36"	drawn	mjb	checked	
status	Planning	drawing #	A-345-9-101	rev	B

**COAST**  
architects

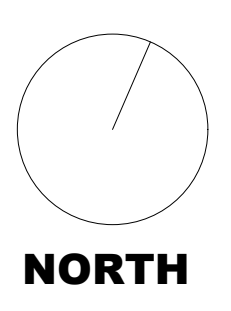
po box 941 - providenciales - turks & caicos islands - british west indies  
 e-mail: info@coasttci.com  
 www.coasttci.com

VILLA  
**9**



**1** LEVEL 2 PLAN  
3/16" = 1'-0"

revisions  
A - 06.01.21 - First Issue (MJB)  
B - 08.03.22 - Issued for Planning (MJB)

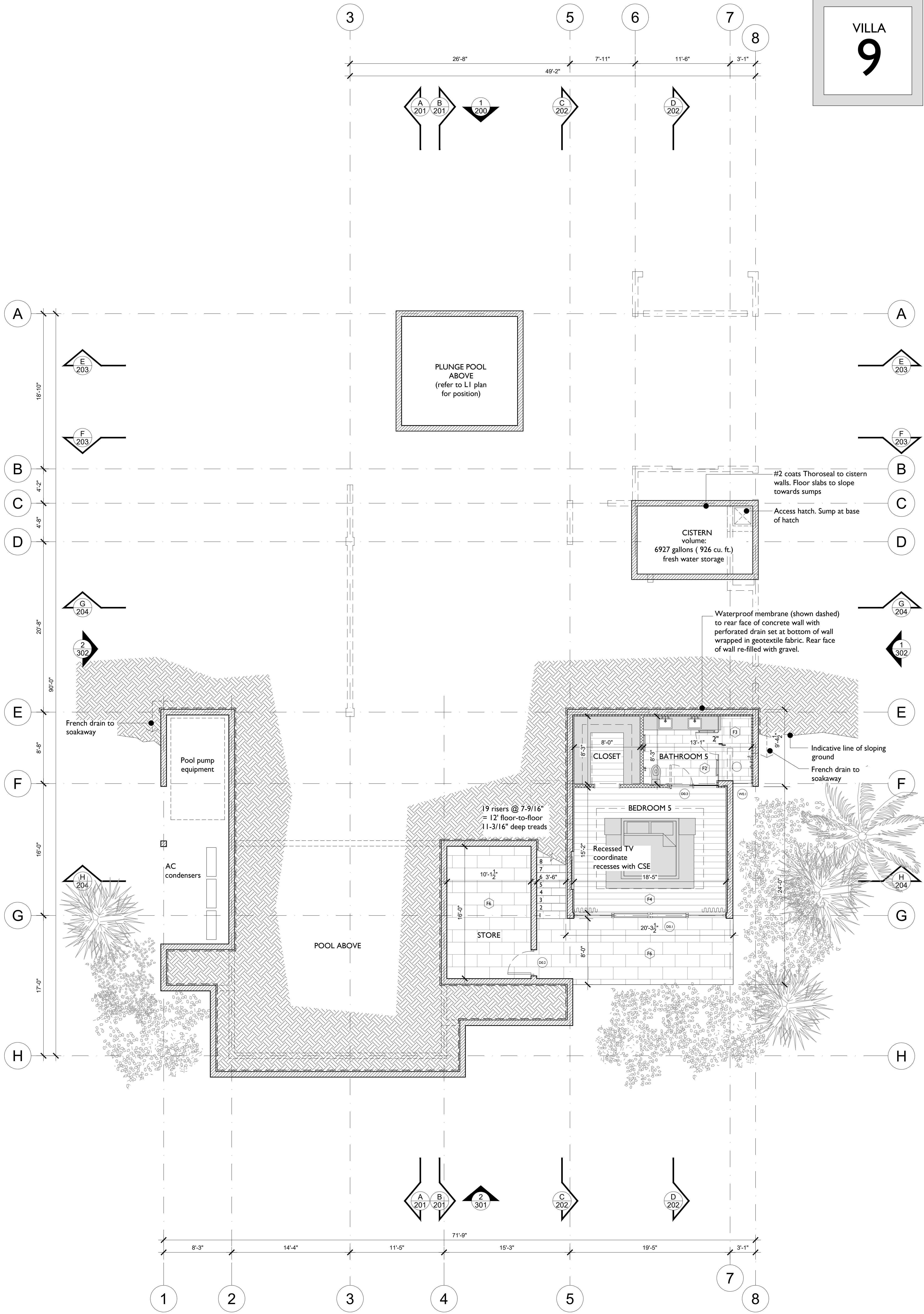


client	Wymara Developments Ltd
project	Wymara Villas - Villa 9
drawn	Level 2 Plan
scale	3/16" = 1'-0" @ 24" x 36"
drawn	mjb
checked	
status	Planning
drawing #	A-345-9-102
rev	B

**COAST**  
architects

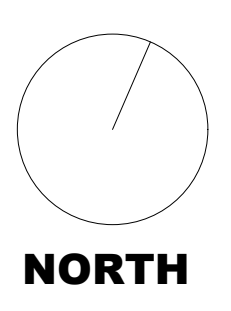
po box 941 - providenciales - turks & caicos islands - british west indies  
e-mail: info@coastcci.com  
www.coastcci.com

VILLA  
**9**



**1** LEVEL 0 FLOOR PLAN  
3/16" = 1'-0"

revisions  
A - 06.01.21 - First Issue (MJB)  
B - 08.03.22 - Timber screen to plant area omitted; Issued for Planning (MJB)



client	Wymara Developments Ltd
project	Wymara Villas - Villa 9
drawn	Level 0 Plan
scale	3/16" = 1'-0" @ 24" x 36"
drawn	mjb
checked	
status	Planning
drawing #	A-345-9-100
rev	B

**COAST**  
architects

po box 941 - providenciales - turks & caicos islands - british west indies  
e-mail: info@coastcci.com  
www.coastcci.com