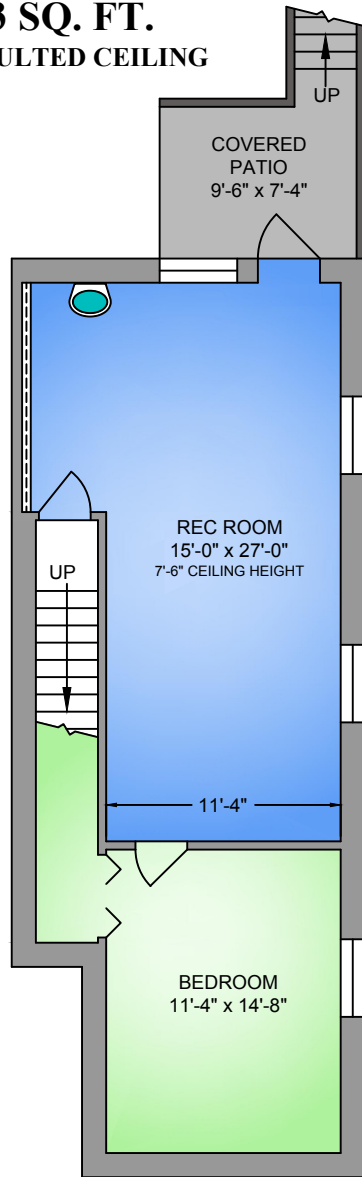


LOWER FLOOR

723 SQ. FT.

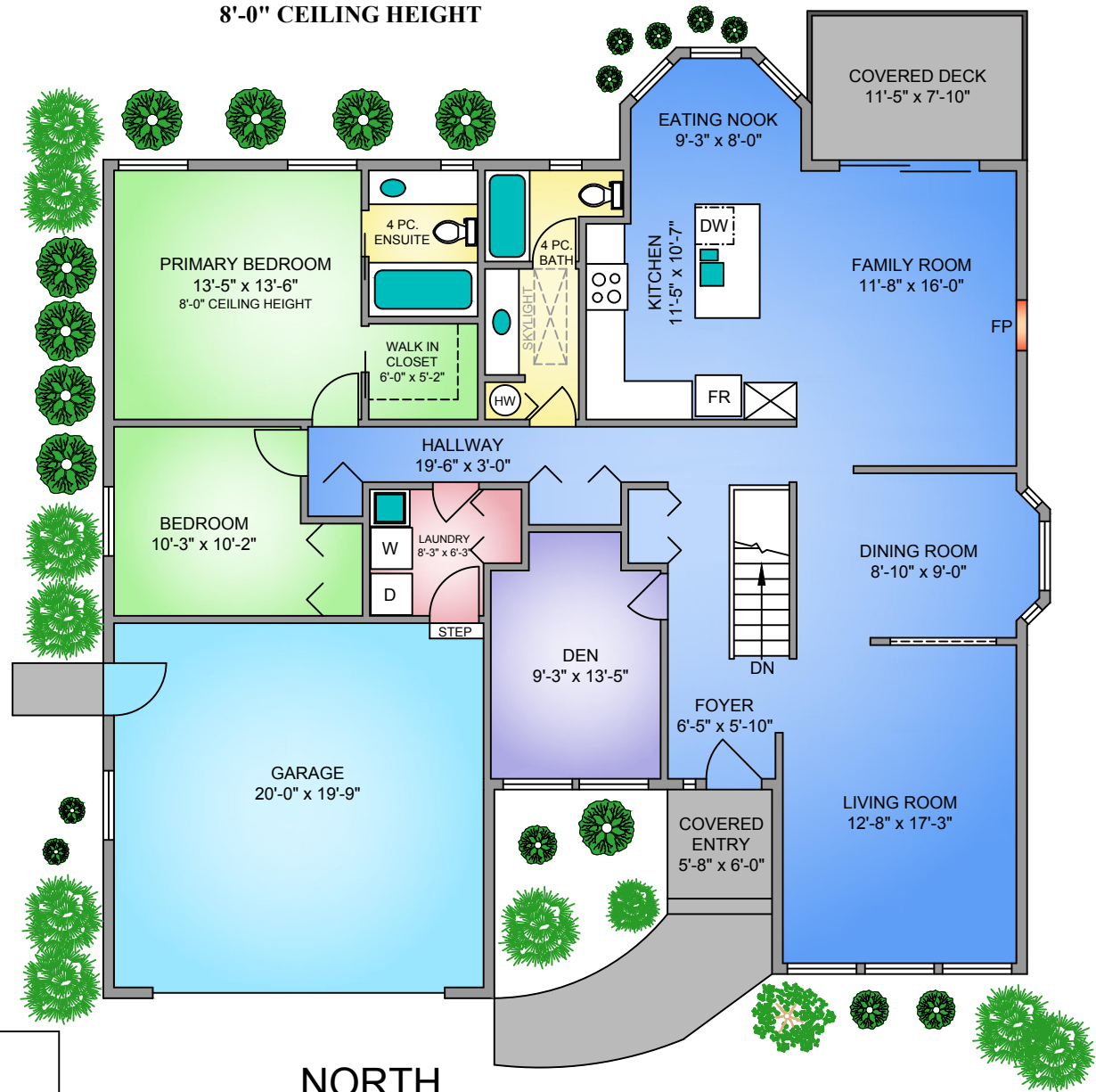
7'-6" VAULTED CEILING



MAIN FLOOR

1725 SQ. FT.

8'-0" CEILING HEIGHT



NORTH



6009 TRILLIUM WAY

JUNE 2, 2021

PREPARED FOR THE EXCLUSIVE USE OF ADAM BALL.

PLANS MAY NOT BE 100% ACCURATE, IF CRITICAL BUYER TO VERIFY.

FLOOR	TOTAL	AREA (SQ. FT.)		
		FINISHED	GARAGE	DECK / PATIO
MAIN	1725	1725	426	89
LOWER	723	723	-	75
TOTAL	2448	2448	426	164

PROPER MEASURE
FROM PRECISION TO PERFECTION

250-415-0041

karyn@propermeasure.com
www.propermeasure.com