

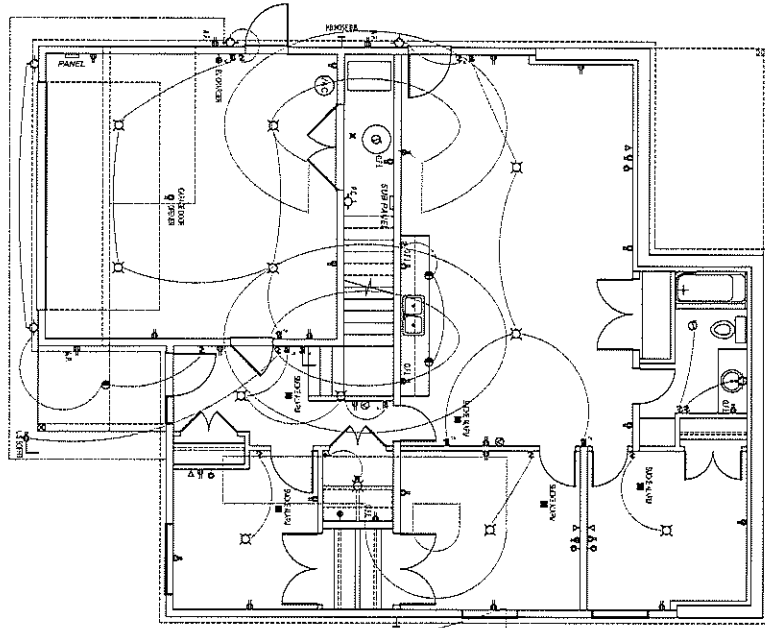
NOTE:  
1. JOIST & TRUSS DIRECTIONS & LOCATION OF BEAMS & GIRDERS TRUSSES TO BE CONFIRMED WITH FLOOR SYSTEM & TRUSS MANUFACTURER.  
2. FINISH FLOOR WINDOWS @ 8'-0" HEIGHT & BASEMENT WINDOWS @ 7'-0" HEIGHT EXCEPT AS NOTED.

Notes:  
Contractor shall verify all dimensions and locate and verify the location of any walls or structures prior to final construction. No liability for any errors. All drawings are the property of Pro-X Design & Drafting and shall not be used without the permission of Pro-X Design & Drafting.

Drawn by: D.C.M.  
Approved by: D.C.M.  
Date: APRIL 2024  
Scale: 1/4" = 1'-0"

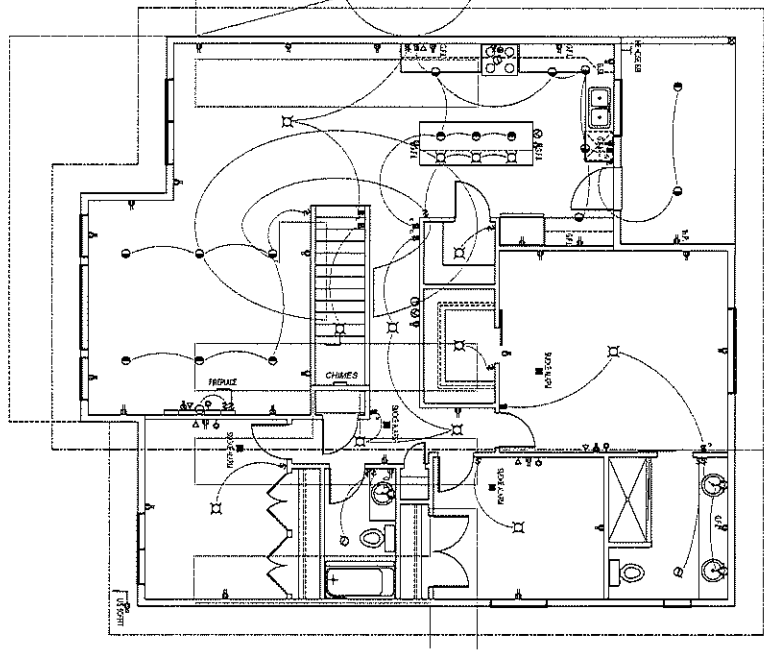
Project: **Marino Construction**  
Site: 5577 COSTER PLACE HOUSE PLANS  
MAIN FLOOR & BASEMENT PLANS





**BASEMENT ELECTRICAL PLAN**  
(SUGGESTED ONLY - CONFIRM WITH OWNER)

- ELECTRICAL SYMBOLS**
- 1. 120V/240V SINGLE PHASE SERVICE
  - 2. 480V/240V 3PH/4W SERVICE
  - 3. 120V/240V 3PH/4W SERVICE
  - 4. 120V/240V 3PH/4W SERVICE
  - 5. 120V/240V 3PH/4W SERVICE
  - 6. 120V/240V 3PH/4W SERVICE
  - 7. 120V/240V 3PH/4W SERVICE
  - 8. 120V/240V 3PH/4W SERVICE
  - 9. 120V/240V 3PH/4W SERVICE
  - 10. 120V/240V 3PH/4W SERVICE
  - 11. 120V/240V 3PH/4W SERVICE
  - 12. 120V/240V 3PH/4W SERVICE
  - 13. 120V/240V 3PH/4W SERVICE
  - 14. 120V/240V 3PH/4W SERVICE
  - 15. 120V/240V 3PH/4W SERVICE
  - 16. 120V/240V 3PH/4W SERVICE
  - 17. 120V/240V 3PH/4W SERVICE
  - 18. 120V/240V 3PH/4W SERVICE
  - 19. 120V/240V 3PH/4W SERVICE
  - 20. 120V/240V 3PH/4W SERVICE



**MAIN FLOOR ELECTRICAL PLAN**  
(SUGGESTED ONLY - CONFIRM WITH OWNER)

- LEGEND**
- 1. CLASS 97-VENT
  - 2. CLASS 97-VENT
  - 3. CLASS 97-VENT
  - 4. CLASS 97-VENT
  - 5. CLASS 97-VENT
  - 6. CLASS 97-VENT
  - 7. CLASS 97-VENT
  - 8. CLASS 97-VENT
  - 9. CLASS 97-VENT
  - 10. CLASS 97-VENT
  - 11. CLASS 97-VENT
  - 12. CLASS 97-VENT
  - 13. CLASS 97-VENT
  - 14. CLASS 97-VENT
  - 15. CLASS 97-VENT
  - 16. CLASS 97-VENT
  - 17. CLASS 97-VENT
  - 18. CLASS 97-VENT
  - 19. CLASS 97-VENT
  - 20. CLASS 97-VENT
  - 21. CLASS 97-VENT
  - 22. CLASS 97-VENT
  - 23. CLASS 97-VENT
  - 24. CLASS 97-VENT
  - 25. CLASS 97-VENT
  - 26. CLASS 97-VENT
  - 27. CLASS 97-VENT
  - 28. CLASS 97-VENT
  - 29. CLASS 97-VENT
  - 30. CLASS 97-VENT
  - 31. CLASS 97-VENT
  - 32. CLASS 97-VENT
  - 33. CLASS 97-VENT
  - 34. CLASS 97-VENT
  - 35. CLASS 97-VENT
  - 36. CLASS 97-VENT
  - 37. CLASS 97-VENT
  - 38. CLASS 97-VENT
  - 39. CLASS 97-VENT
  - 40. CLASS 97-VENT
  - 41. CLASS 97-VENT
  - 42. CLASS 97-VENT
  - 43. CLASS 97-VENT
  - 44. CLASS 97-VENT
  - 45. CLASS 97-VENT
  - 46. CLASS 97-VENT
  - 47. CLASS 97-VENT
  - 48. CLASS 97-VENT
  - 49. CLASS 97-VENT
  - 50. CLASS 97-VENT
  - 51. CLASS 97-VENT
  - 52. CLASS 97-VENT
  - 53. CLASS 97-VENT
  - 54. CLASS 97-VENT
  - 55. CLASS 97-VENT
  - 56. CLASS 97-VENT
  - 57. CLASS 97-VENT
  - 58. CLASS 97-VENT
  - 59. CLASS 97-VENT
  - 60. CLASS 97-VENT
  - 61. CLASS 97-VENT
  - 62. CLASS 97-VENT
  - 63. CLASS 97-VENT
  - 64. CLASS 97-VENT
  - 65. CLASS 97-VENT
  - 66. CLASS 97-VENT
  - 67. CLASS 97-VENT
  - 68. CLASS 97-VENT
  - 69. CLASS 97-VENT
  - 70. CLASS 97-VENT
  - 71. CLASS 97-VENT
  - 72. CLASS 97-VENT
  - 73. CLASS 97-VENT
  - 74. CLASS 97-VENT
  - 75. CLASS 97-VENT
  - 76. CLASS 97-VENT
  - 77. CLASS 97-VENT
  - 78. CLASS 97-VENT
  - 79. CLASS 97-VENT
  - 80. CLASS 97-VENT
  - 81. CLASS 97-VENT
  - 82. CLASS 97-VENT
  - 83. CLASS 97-VENT
  - 84. CLASS 97-VENT
  - 85. CLASS 97-VENT
  - 86. CLASS 97-VENT
  - 87. CLASS 97-VENT
  - 88. CLASS 97-VENT
  - 89. CLASS 97-VENT
  - 90. CLASS 97-VENT
  - 91. CLASS 97-VENT
  - 92. CLASS 97-VENT
  - 93. CLASS 97-VENT
  - 94. CLASS 97-VENT
  - 95. CLASS 97-VENT
  - 96. CLASS 97-VENT
  - 97. CLASS 97-VENT
  - 98. CLASS 97-VENT
  - 99. CLASS 97-VENT
  - 100. CLASS 97-VENT

NOTES:  
Contractor shall verify all dimensions and locate and carry the  
loadings on the structure and the structure shall be designed to carry the  
loadings on the structure of the design. Contractor shall not be  
responsible for the accuracy of the design. Design is not to be  
used without the approval of Pro-X Design & Drafting.

drawn by: D.G.M.  
approved by: D.G.M.  
date: APRIL 2024  
scale: 1/4" = 1'-0"

project: **Marino Construction**  
file: **5577 COSTER PLACE HOUSE PLANS**  
**ELECTRICAL LAYOUT PLANS**

