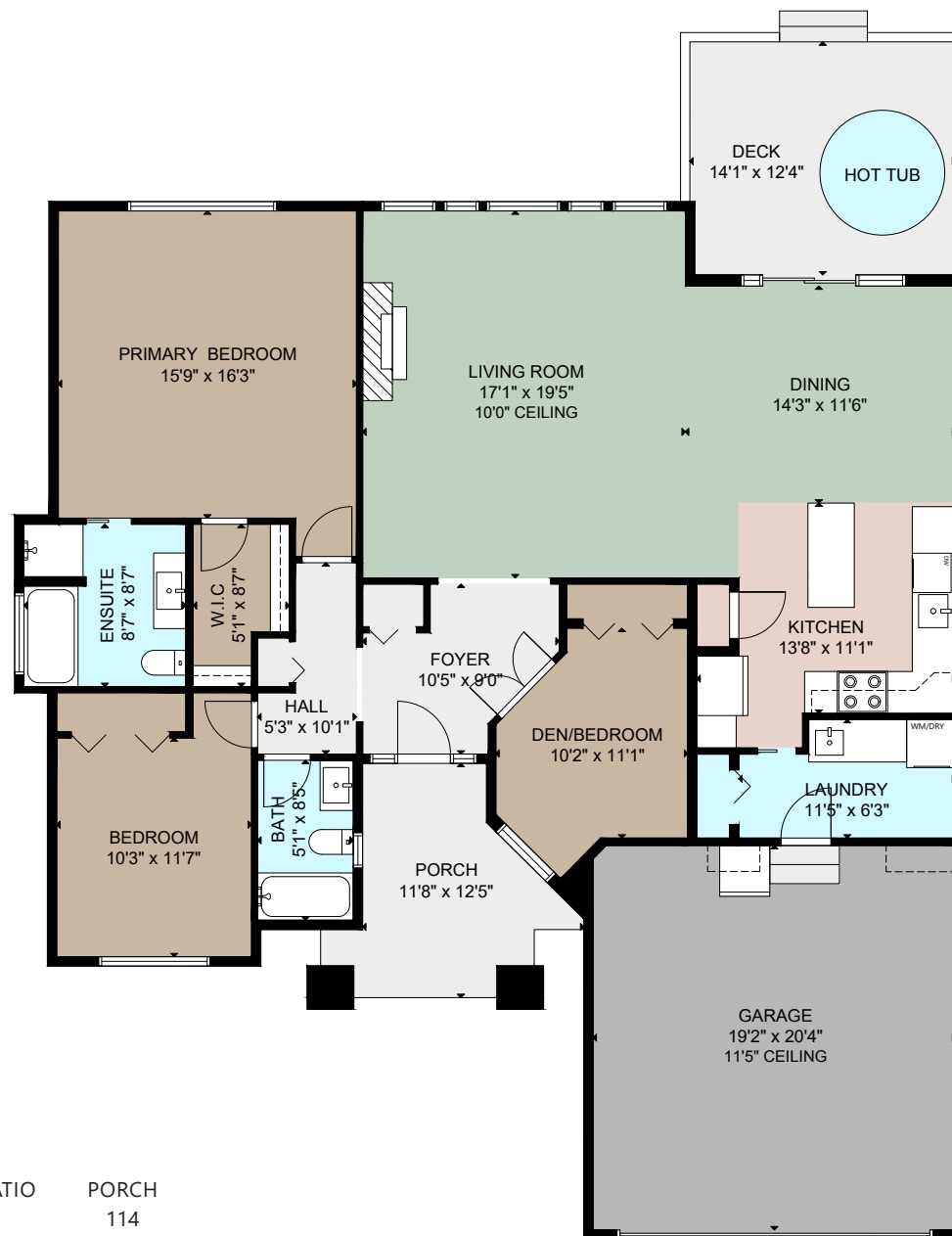


MAIN FLOOR
1,682 SQ. FT.



943 DELOUME ROAD

	FINISHED	UNFINISHED	GARAGE	DECK / PATIO	PORCH
MAIN	1682	-	389	172	114
TOTAL	1682	-	389	172	114

SIZE AND DIMENSIONS ARE APPROXIMATE, ACTUAL MAY VARY
PREPARED FOR THE EXCLUSIVE USE OF

JASON FINLAYSON

MEASURED ON 09/22/22, BY STELLAR REAL ESTATE MARKETING
www.stellarca.ca | + (250) 929 1888 | info@stellarca.ca

