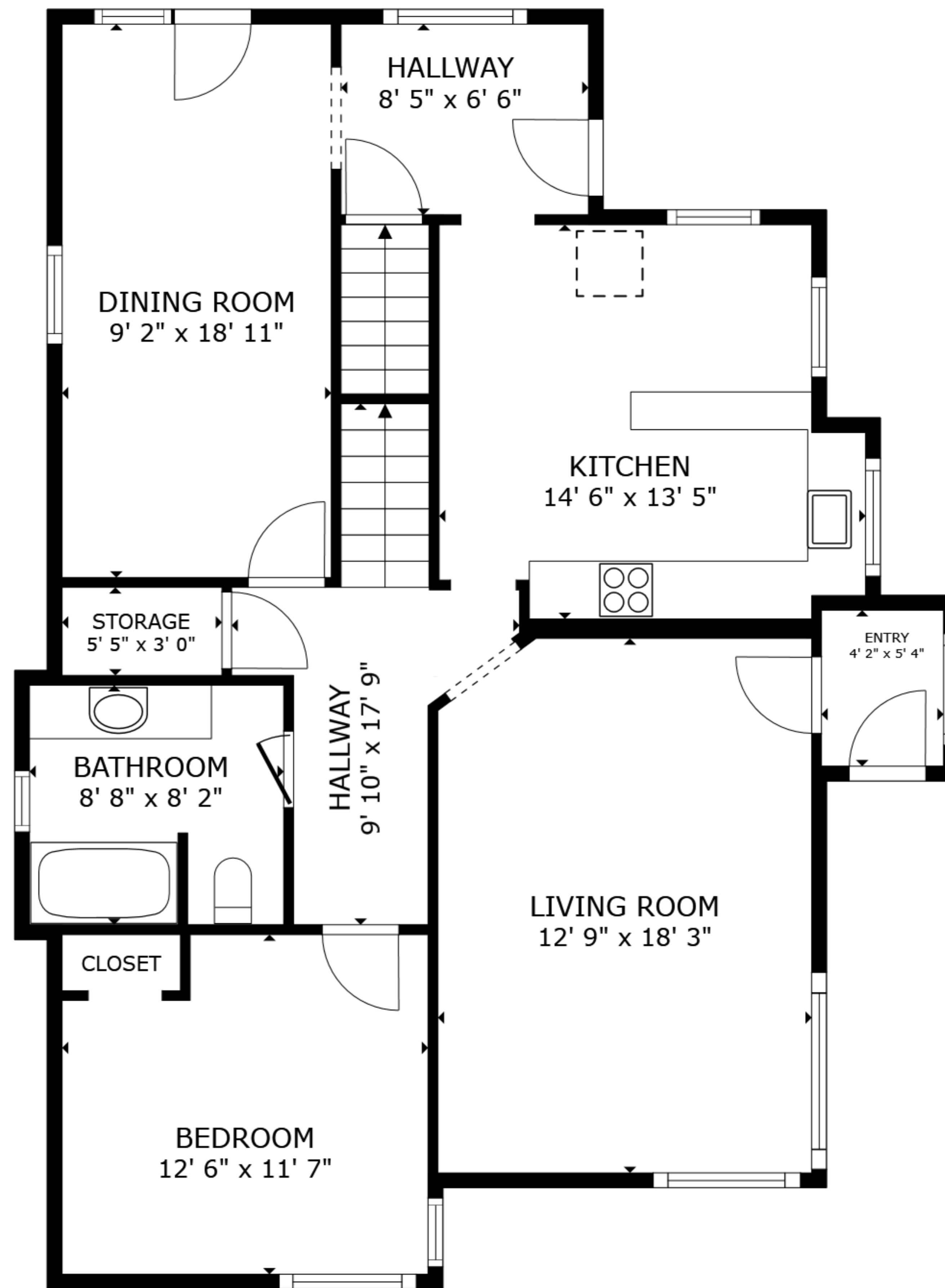
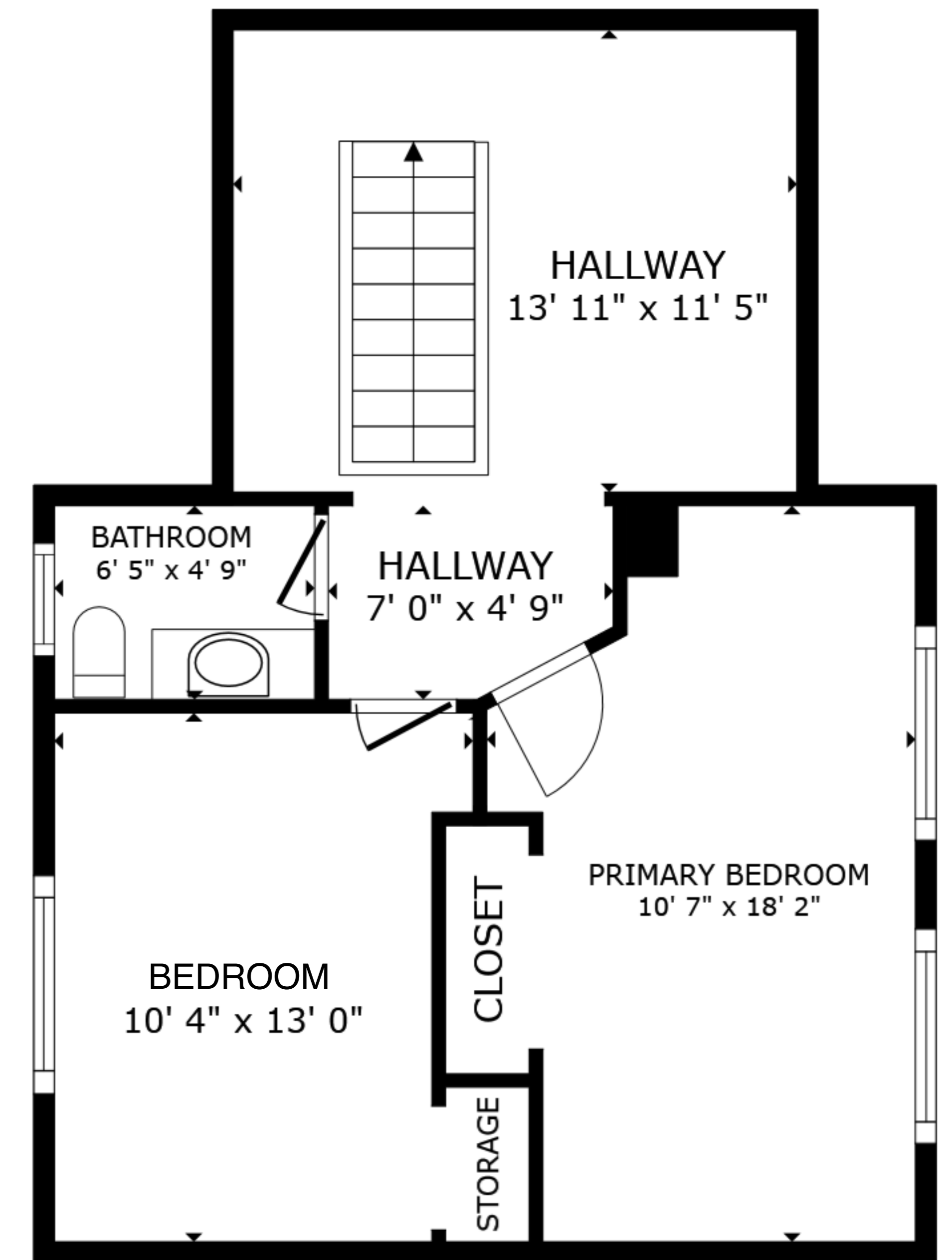


FLOOR 1



FLOOR 2



FLOOR 3

6902 Jasper St, Powell River, BC

GROSS INTERNAL AREA
 FLOOR 1 765 sq.ft. FLOOR 2 1,036 sq.ft. FLOOR 3 548 sq.ft.
 TOTAL : 2,349 sq.ft.

SIZES AND DIMENSIONS ARE APPROXIMATE, ACTUAL MAY VARY.