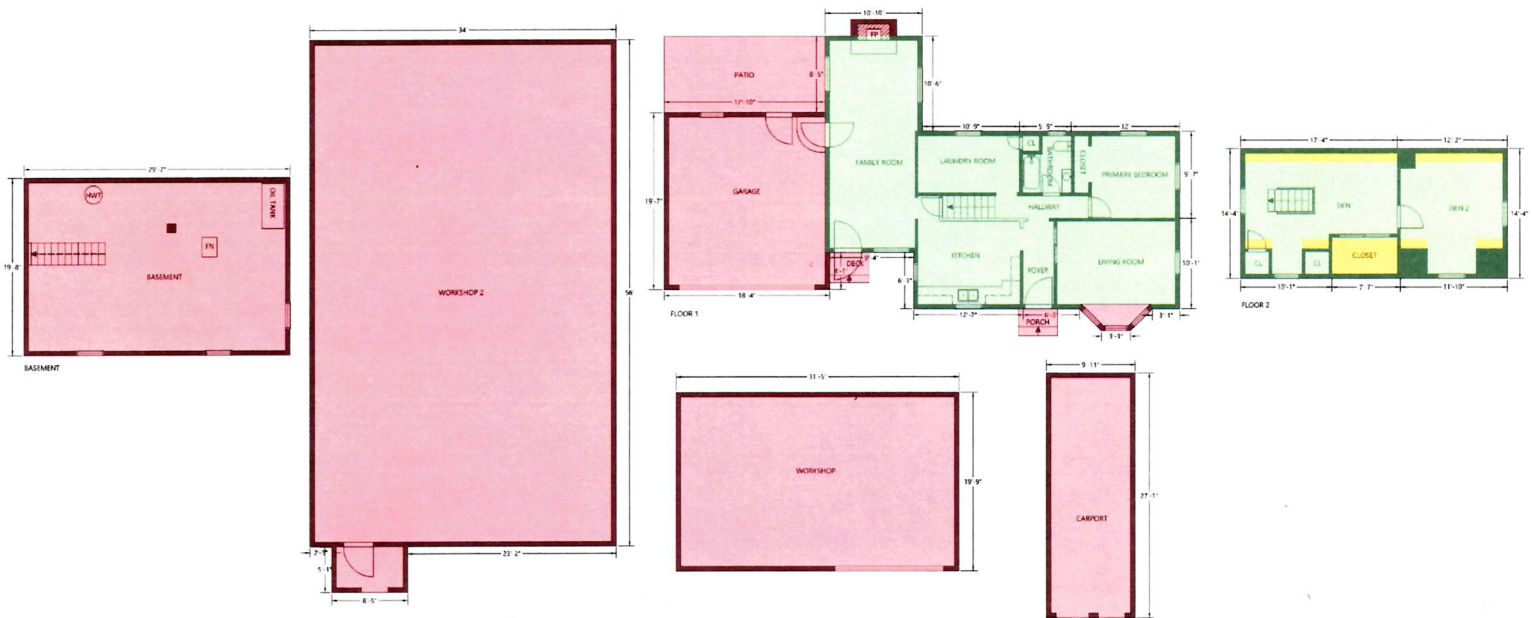




W11410 State Highway 64, Pound, Wisconsin, USA



GROSS LIVING AREA: 1178.22 Sq. Ft.
FLOOR 1: 821.77 Sq. Ft. FLOOR 2: 356.44 Sq. Ft.
ADU: 0 Sq Ft
ADDITIONAL ABOVE GRADE LIVING AREA: 66.66 Sq. Ft.
DEN 2(LOW-CEILING): 15.11 Sq. Ft. DEN(LOW-CEILING): 24 Sq. Ft. CLOSET(LOW-CEILING): 27.55 Sq. Ft.
BELOW GRADE LIVING AREA: 0 Sq. Ft.
ABOVE GRADE UNFINISHED AREA: 3351.09 Sq. Ft.
PORCH: 13.33 Sq. Ft. PATIO: 150.22 Sq. Ft. GARAGE: 352 Sq. Ft.
CARPORT: 267.55 Sq. Ft. WORKSHOP: 620.44 Sq. Ft. WORKSHOP 2: 1947.55 Sq. Ft.
BELOW GRADE UNFINISHED AREA: 580.44 Sq. Ft.
BASEMENT: 580.44 Sq. Ft.