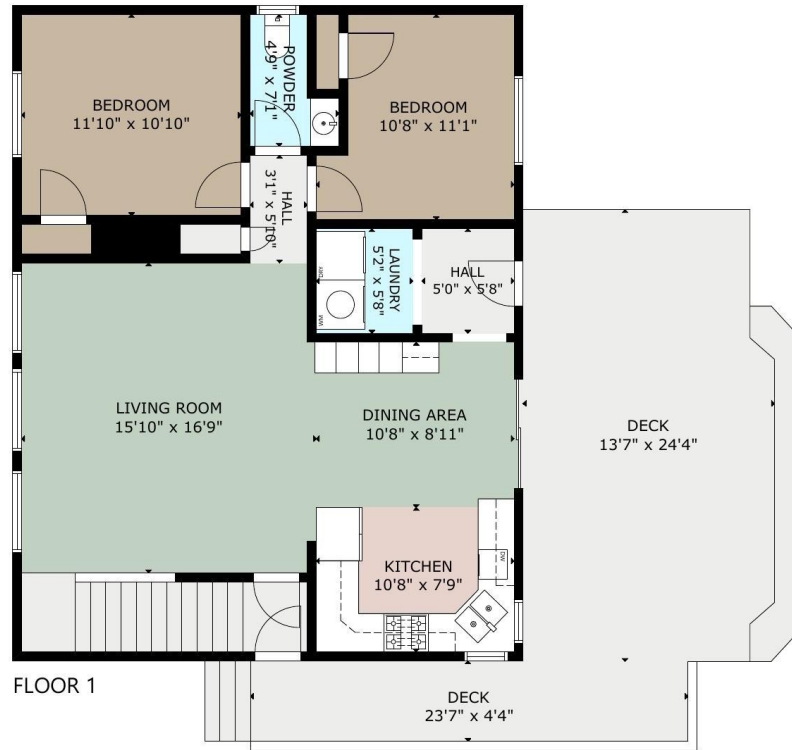
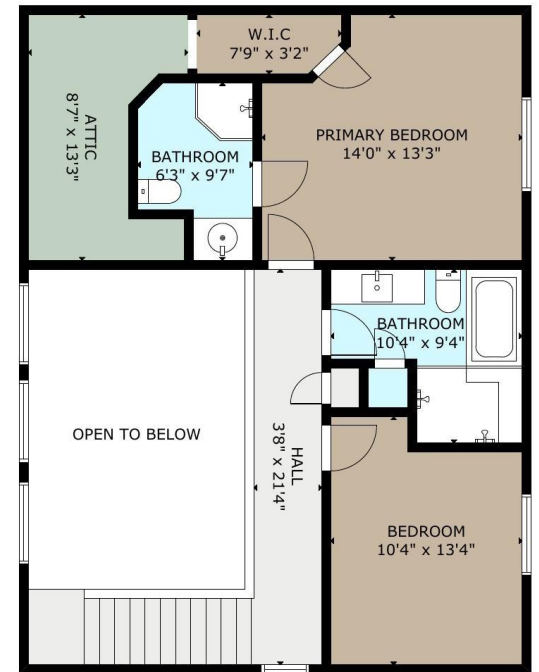


BASEMENT



FLOOR 1



FLOOR 2

Grassroots Realty Group LTD.

Date: 2026 April 11

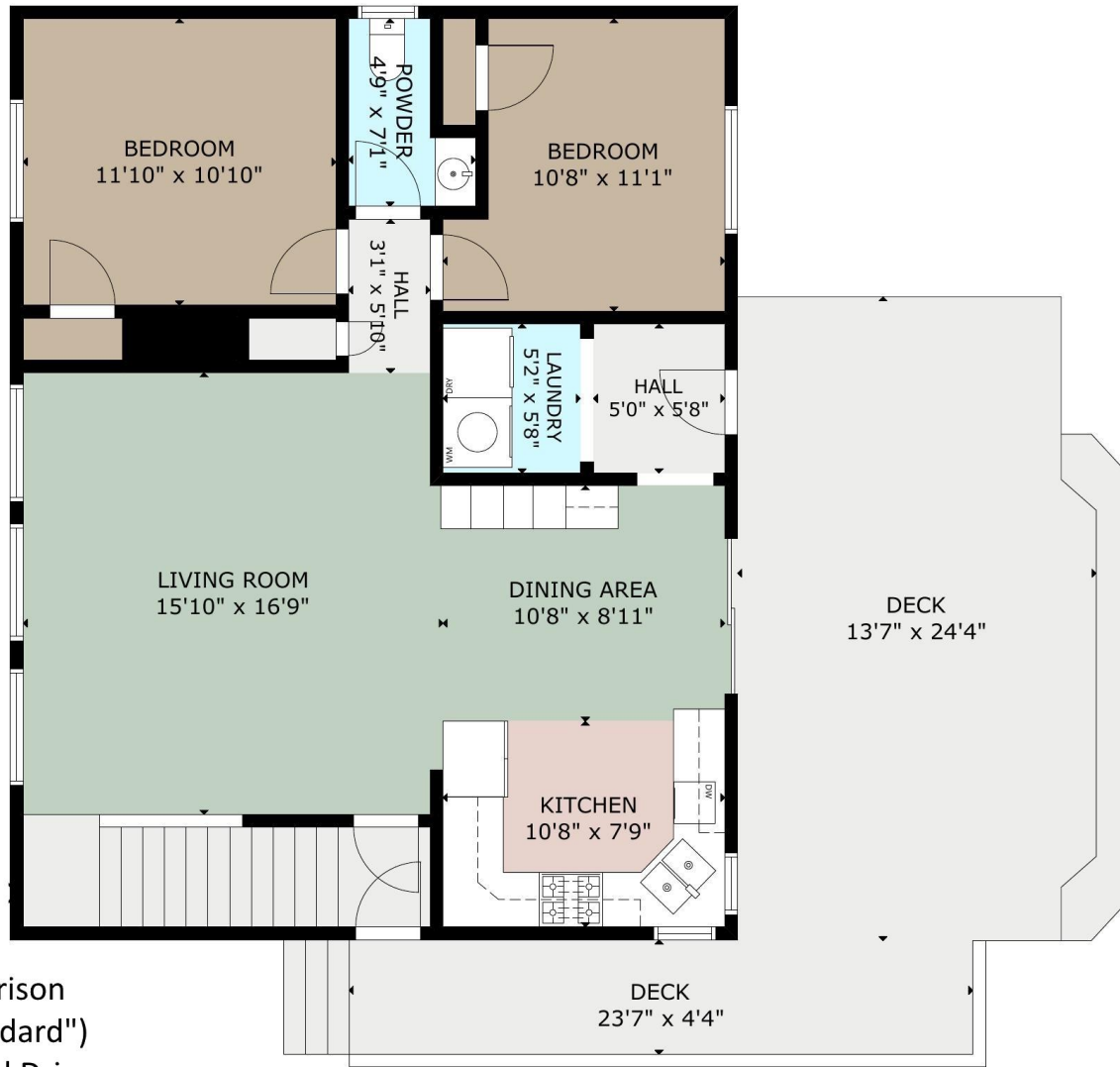
Agents: Marc See & Terri Harrison

ANSI® Z765-2021 ("ANSI standard")

Address: 226 Lady Macdonald Drive

Canmore AB

GROSS EXTERNAL AREA
 TOTAL: 2612 sq ft
 BASEMENT: 967 sq ft, FLOOR 1: 973 sq ft, FLOOR 2: 672 sq ft
 EXCLUDED AREAS: DECK: 460 sq ft ATTIC: 133 sq ft
 SIZE AND DIMENSIONS ARE APPROXIMATE, ACTUAL MAY VARY



Grassroots Realty Group LTD.

Date: 2026 April 11

Agents: Marc See & Terri Harrison

ANSI® Z765-2021 ("ANSI standard")

Address: 226 Lady Macdonald Drive

Canmore AB

FLOOR 1

GROSS EXTERNAL AREA
 TOTAL: 2612 sq ft
 BASEMENT: 967 sq ft, FLOOR 1: 973 sq ft, FLOOR 2: 672 sq ft
 EXCLUDED AREAS: DECK: 460 sq ft ATTIC: 133 sq ft
 SIZE AND DIMENSIONS ARE APPROXIMATE, ACTUAL MAY VARY

Grassroots Realty Group LTD.

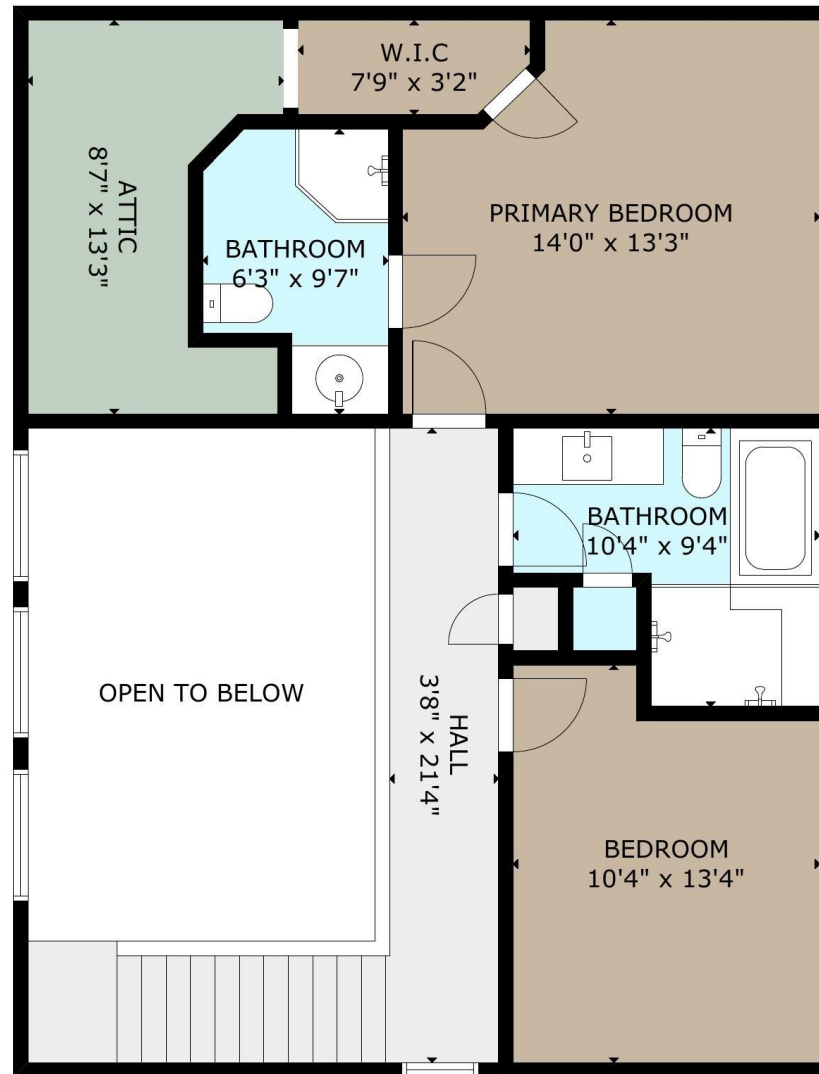
Date: 2026 April 11

Agents: Marc See & Terri Harrison

ANSI® Z765-2021 ("ANSI standard")

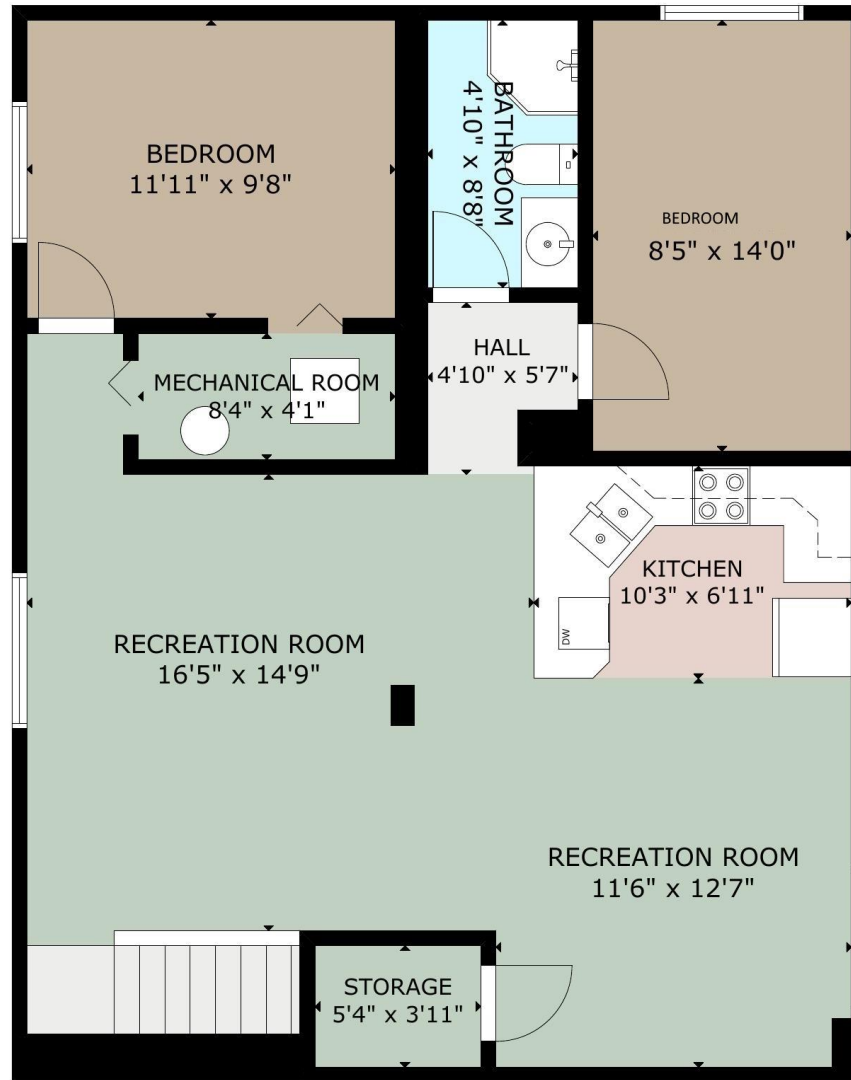
Address: 226 Lady Macdonald Drive

Canmore AB



FLOOR 2

GROSS EXTERNAL AREA
TOTAL: 2612 sq ft
BASEMENT: 967 sq ft, FLOOR 1: 973 sq ft, FLOOR 2: 672 sq ft
EXCLUDED AREAS: DECK: 460 sq ft ATTIC: 133 sq ft
SIZE AND DIMENSIONS ARE APPROXIMATE, ACTUAL MAY VARY



Grassroots Realty Group LTD.

Date: 2026 April 11

Agents: Marc See & Terri Harrison

ANSI® Z765-2021 ("ANSI standard")

Address: 226 Lady Macdonald Drive

Canmore AB

BASEMENT

GROSS EXTERNAL AREA
 TOTAL: 2612 sq ft
 BASEMENT: 967 sq ft, FLOOR 1: 973 sq ft, FLOOR 2: 672 sq ft
 EXCLUDED AREAS: DECK: 460 sq ft ATTIC: 133 sq ft
 SIZE AND DIMENSIONS ARE APPROXIMATE, ACTUAL MAY VARY