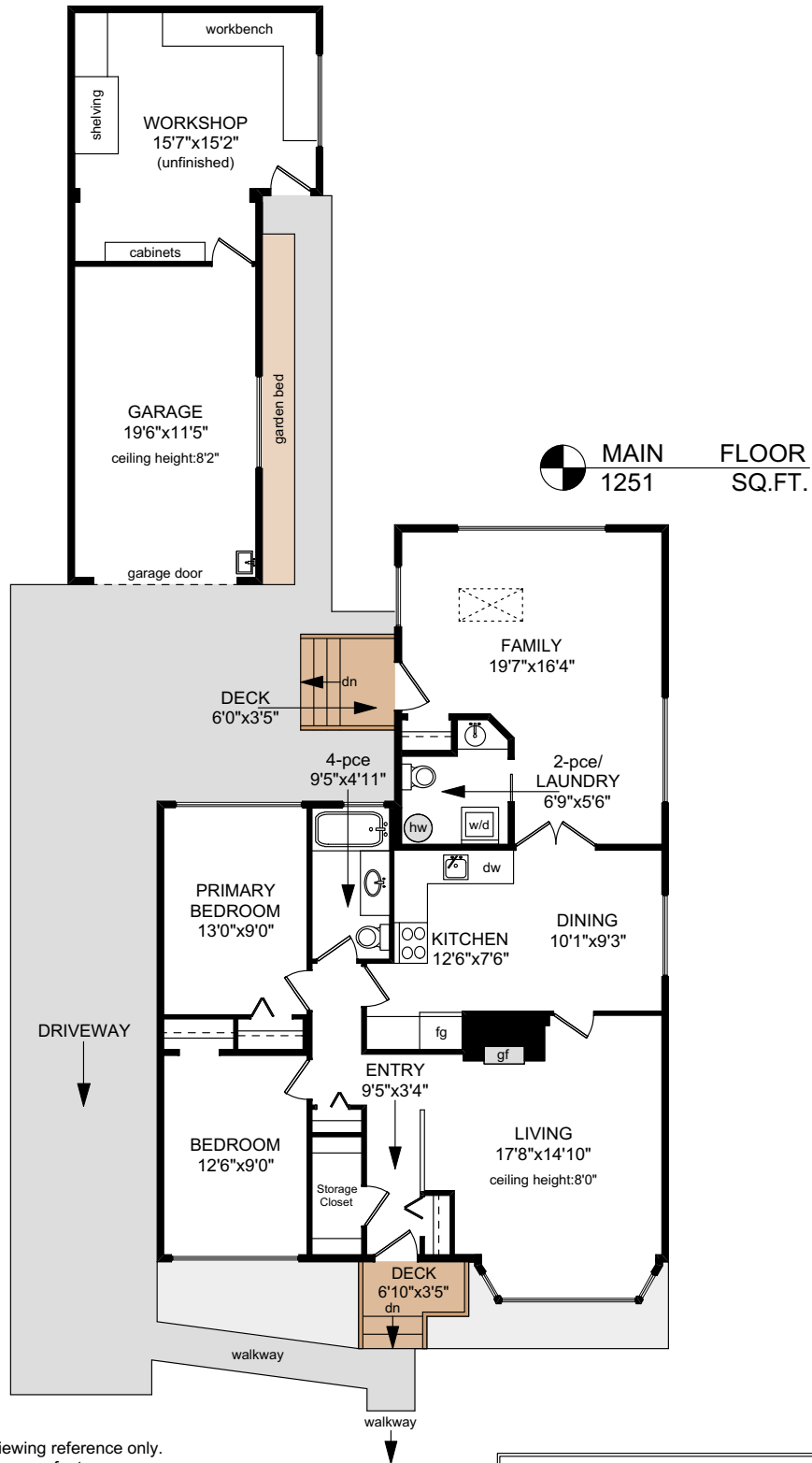
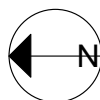


# 2643 VICTOR STREET



NOTE: The room name labels/sizes are for viewing reference only.  
They are not used for calculating total square footage.

	FINISHED SQ. FT.	UNFINISHED SQ. FT.	TOTAL SQ. FT.
MAIN	1251	0	1251
TOTAL	1251	0	1251
GARAGE	0	245	245
WORKSHOP	0	242	242
DECKS	0	44	44



0' 5' 10'

PREPARED FOR THE EXCLUSIVE USE OF  
SYLVIA THERRIEN,  
PERSONAL REAL ESTATE CORPORATION,  
OF NEWPORT REALTY

MEASURED ON: 06/17/25  
DRAWING FILE: 19200

**Taf** VICTORIA, B.C.  
**M** Measure Ph. 2508838894  
www.tafemeasure.com

**Sylvia Therrien**  
Sylvia Therrien & Associates  
Personal Real Estate Corporation  
sylvia@sylviatherrien.ca  
250-385-2033

**Newport Realty**  
Newport Realty Ltd.  
1144 Fort Street, Victoria, BC

BOARD of REGENTS  
**LUXURY**  
REAL ESTATE