

#1 - 835, Lakeview Drive

ANSI/BOMA Z76.5-2021 - Windermere, BC

MAIN LEVEL (AG) - 1042.00 Sq.Ft.

UPPER LEVEL (AG) - 504.00 Sq.Ft.

LOWER LEVEL (AG) - 610.00 Sq.Ft.

GROSS LIVING AREA (GLA) - 2156.00 Sq.Ft.

TOTAL DEDUCTED AREA - 51.00 Sq.Ft.

TOTAL MEASURED AREA - 2207.00 Sq.Ft.

DATE COMPLETED: FEBRUARY 2024

PROPERTY TYPE: ATTACHED

KEVIN THYGESEN / REMAX INVERMERE



info@urbanmeasure.com

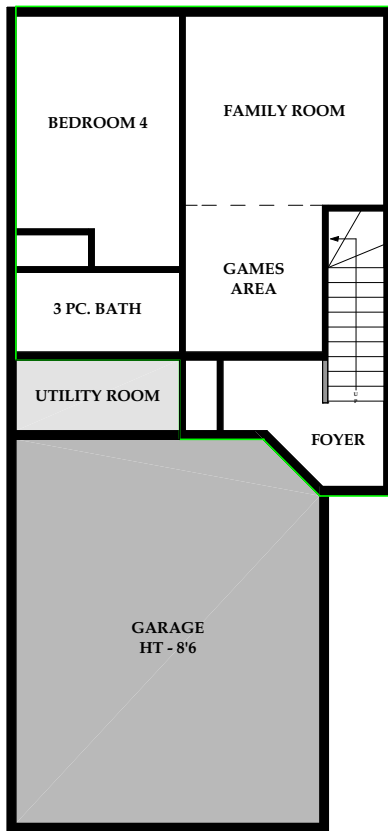
Calgary | Edmonton, AB

403.827.4420 | 587.598.4420

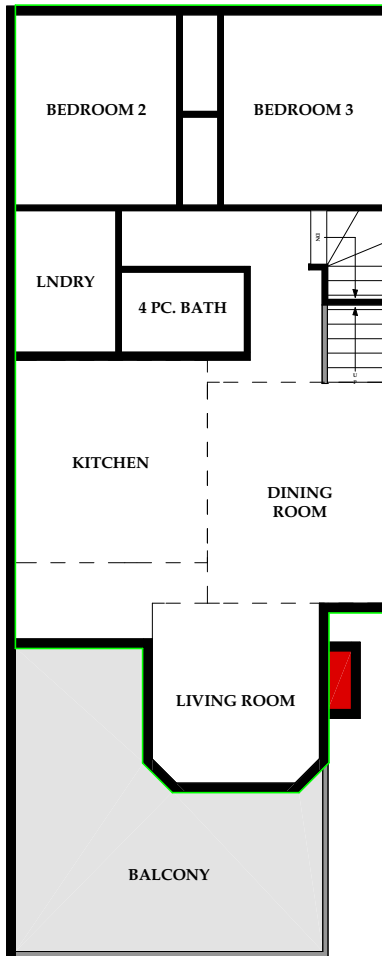
Toll Free : 1.844.504.4420



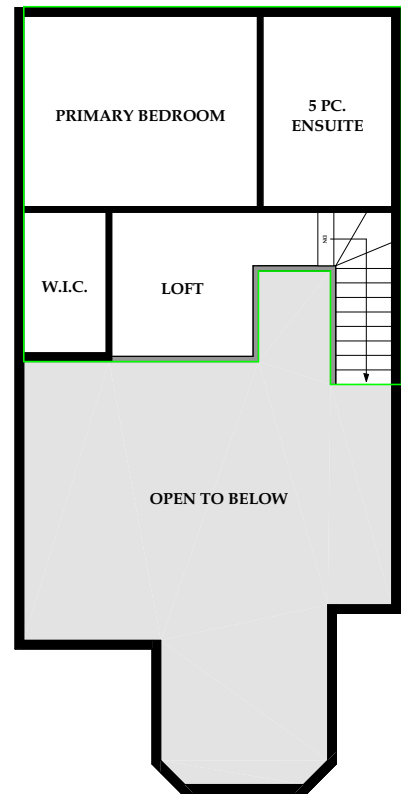
LOWER LEVEL



MAIN LEVEL



UPPER LEVEL



The Schematic Drawing shows the following depending on the style of property:

For Apartment Style Condominiums the measurements represented above are Interior Measurements in accordance with Principle 4 of the RMS as of Jan 1st 2024

For Detached, Semi-Detached, and Townhome Properties the measurements represented above are Exterior Foundation Surface Measurements in accordance with Principle 3 of the RMS as of Jan 1st 2024

RMS MEASURING | FLOOR PLANS | PHOTOS | VIDEOS | AERIAL | MATTERPORT 3D | RENDERINGS | VIRTUAL STAGING

Disclaimer: All total Sq.Ft. measurements completed and insured by UrbanMeasure Inc. using the RMS Guide as prepared by RECA. Measurement Insurance provided is to be considered void without payment and/or altered in anyway. Total Sq.Ft. measurements are based on the area within the allowed perimeter of the home or condo, not by multiplying room sizes. They DO NOT include decks, patios, garages, vaulted "open to below" areas, plant ledge windows, areas with floor to ceiling heights below five feet, and fireplace cantilevers. For more information on the residential measurement standard (RMS) please visit: <https://www.reca.ca>