

# Schedule B

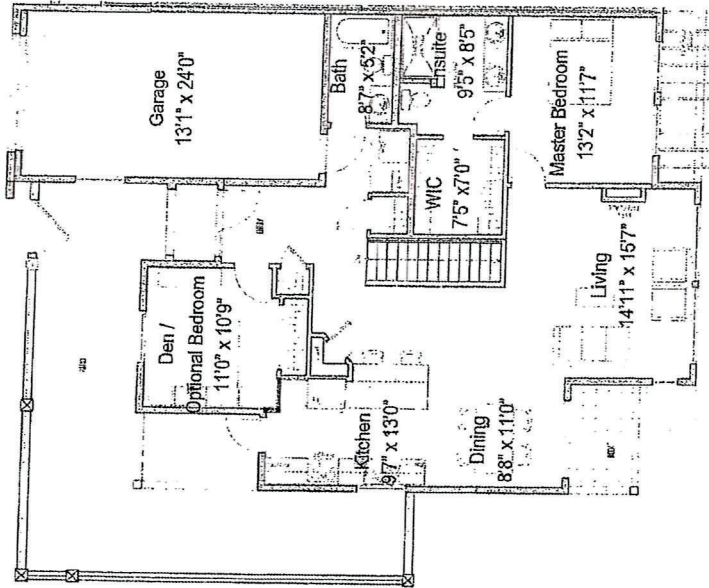
*Handwritten initials and a signature.*

*\*Total LFA excludes garage/storage & mechanical. The developer reserves the right to make changes based on product availability, market and site conditions. The final layout may not be exactly as shown.*

## Torre - Walk Out

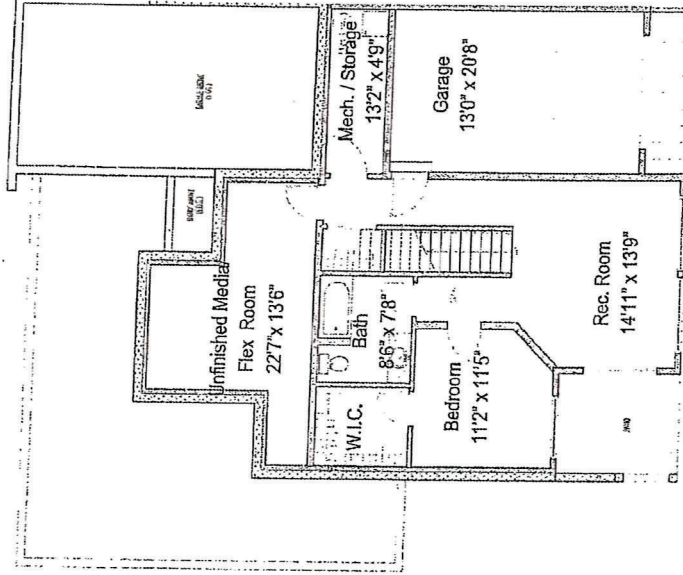
Lot: 30

Total Liveable Floor Area: 2,189 sq.ft.



*Main Level*

Main Floor • 1,274 sq.ft.  
Garage • 353 sq.ft.



*Lower Level*

Lower Floor • 651 sq.ft.  
Unfinished Media/Flexroom • 264 sq.ft.  
Garage • 294 sq.ft.  
Storage/Mechanical • 81 sq.ft.

# Torre