

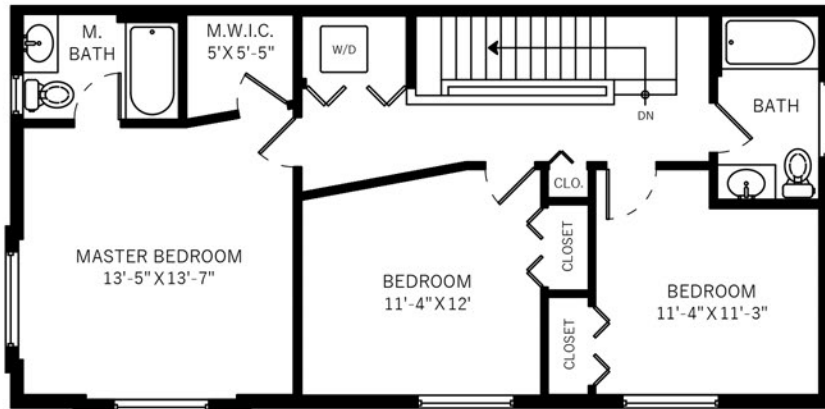
#8 - 1405 MALLEK CR.

VICTORIA, BC

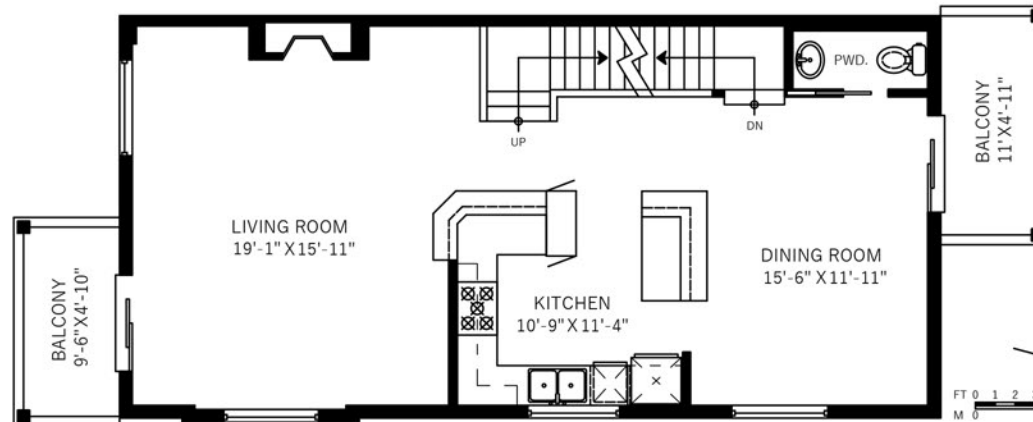
3 BEDROOMS

3 BATHROOMS

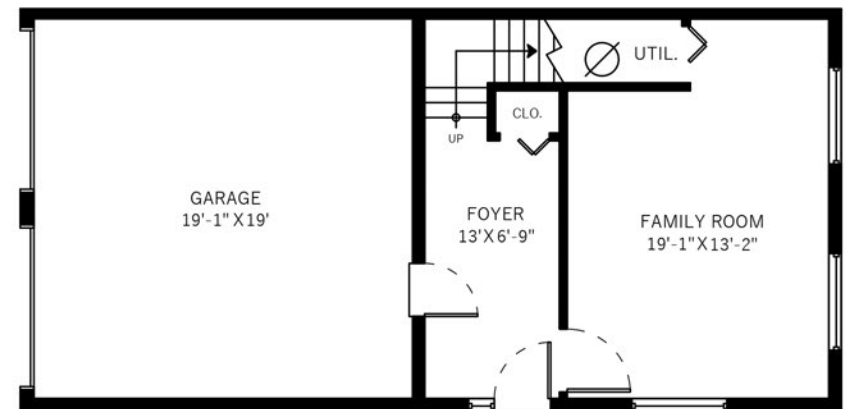
2110 SQUARE FEET



Upper Floor: 838 Sq.Ft.
Ceiling Height: 8'



Main Floor: 836 Sq.Ft.
Ceiling Height: 9'



Lower Floor: 436 Sq.Ft.
Ceiling Height: 8'

| | |
|-------------|-------------|
| Main Floor | 836 SQ.FT. |
| Upper Floor | 838 SQ.FT. |
| Lower Floor | 436 SQ.FT. |
| Total | 2110 SQ.FT. |

| | |
|--------------|------------|
| Balcony | 56 SQ.FT. |
| Balcony | 64 SQ.FT. |
| Garage | 399 SQ.FT. |
| Total Extras | 519 SQ.FT. |

THE
CONDO
GROUP

REAL ESTATE LTD

WWW.THECONDOGROUP.COM

250-382-6626