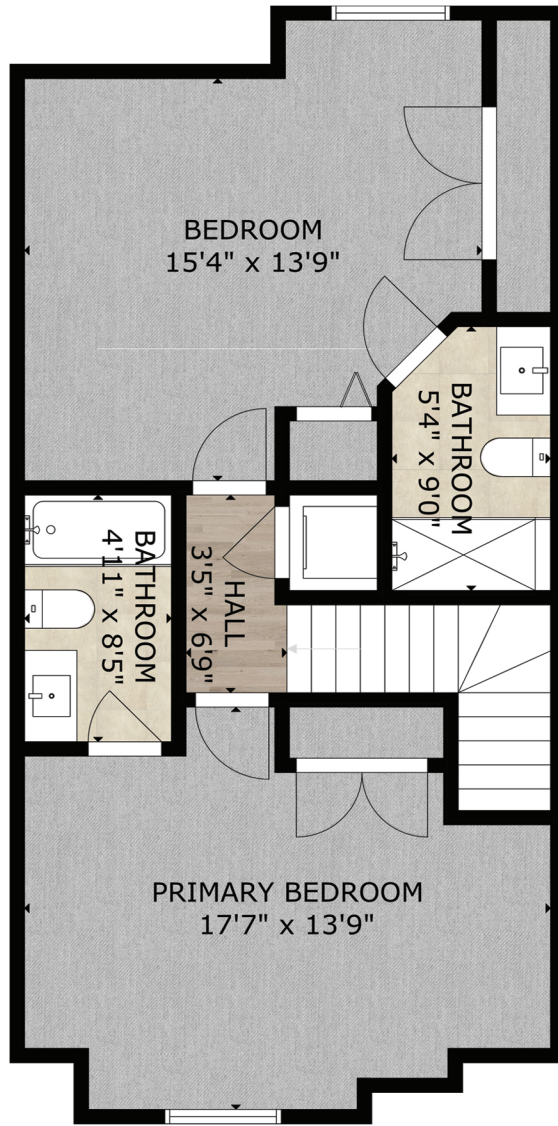
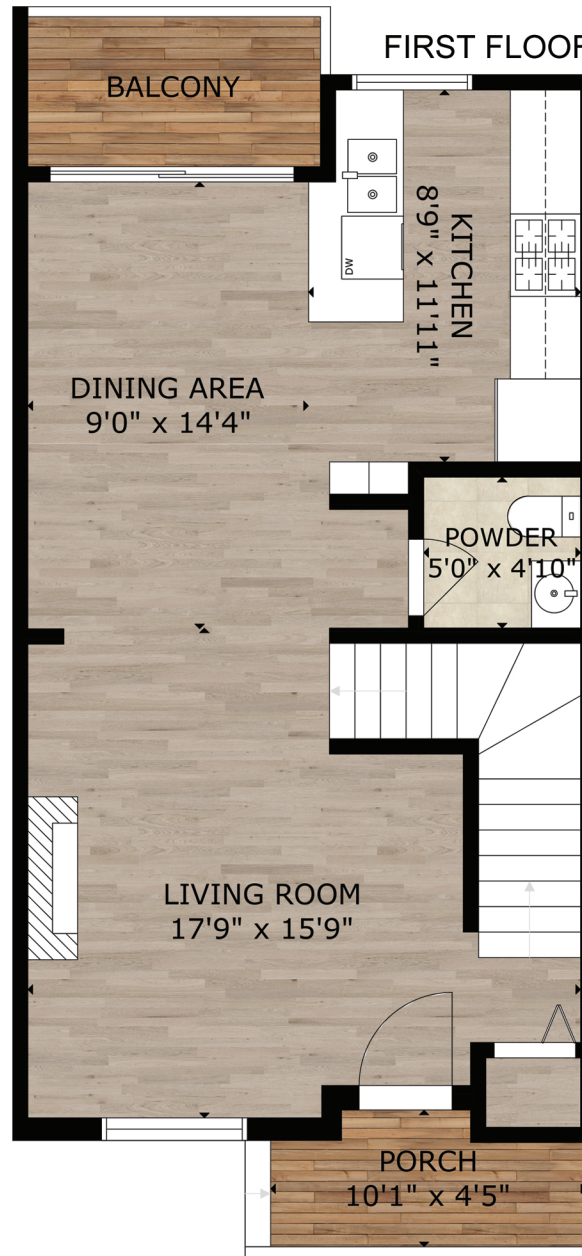


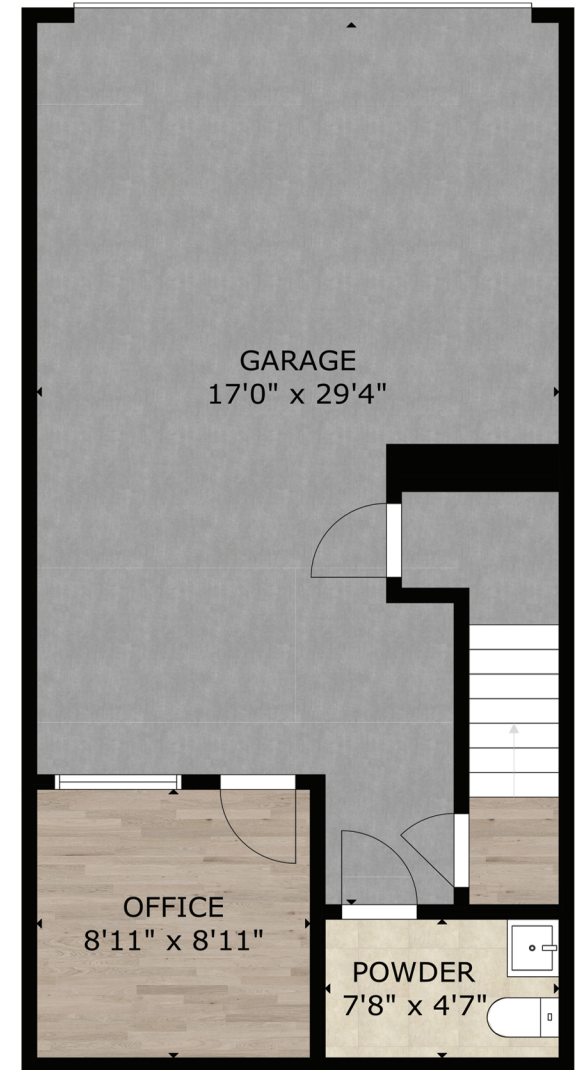
SECOND FLOOR



FIRST FLOOR



BASEMENT



#117 - 785 Station Avenue, Langford, BC V9B 2S1					
PREPARED FOR THE EXCLUSIVE USE OF REALTOR® TRACY MENZIES					
Size and dimensions are approximate. If critical, Buyer to verify.					
FLOOR	Area (SQ. FT.)				
	INTERIOR	PORCH	DECK	GARAGE	TOTAL
SECOND FLOOR	622				622
FIRST FLOOR	552	38	50		640
BASEMENT	114			496	610
TOTAL	1288	38	50	496	1872



**PEMBERTON
HOLMES** REAL ESTATE
ESTABLISHED 1887

coastline
PHOTOGRAPHY

