

Skaha Lake Towers Phase 3

skahalaketowers.ca

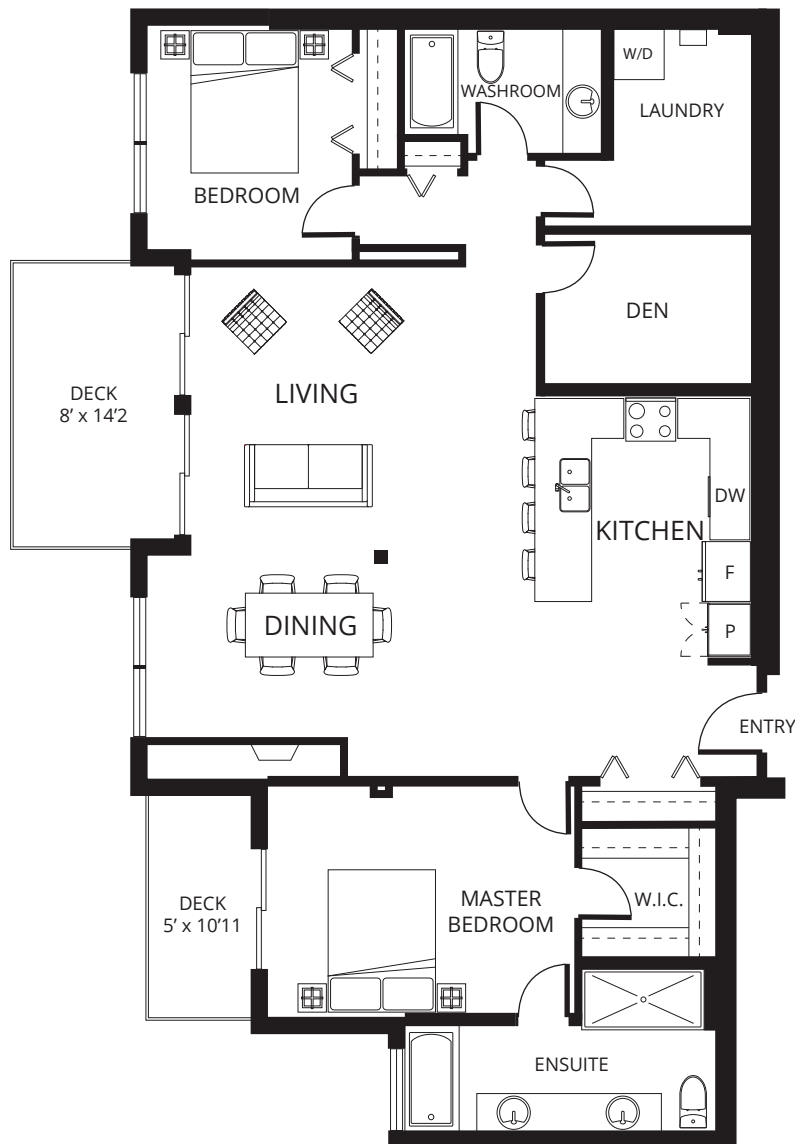
Plan E

13th Floor

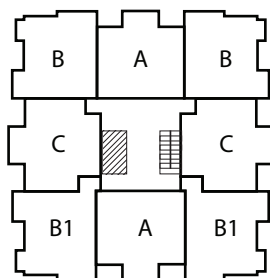
1,584 sq.ft.

2 bedroom

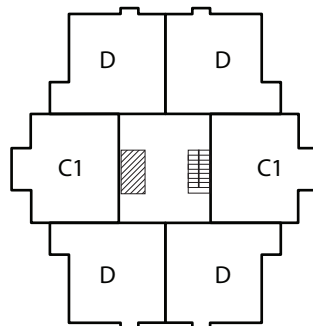
UNIT: 1301



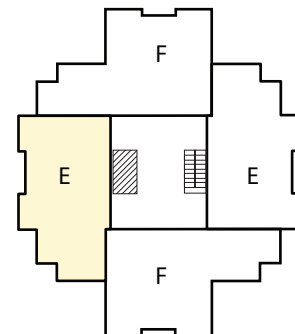
- Living: 17'11 x 14'
- Dining: 20' x 8'9
- Kitchen: 9'11 x 13'
- Master: 15'3 x 11'4
- Bedroom: 9'10 x 12'
- Den: 10'3 x 7'4



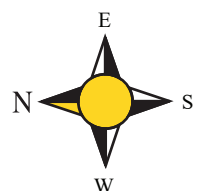
3rd to 10th Floor



11th and 12th Floor



13th and 14th Floor



Philip*, Diane*, Stephen* Fox

*Personal Real Estate Corporation

RE/MAX Penticton Realty

foxandfox@pentictonproperties.com

Toll Free: 1-800-652-6246

Phone: 250-492-2266

copyright 2022 Skaha Lake Towers

The developer reserves the right to make modifications and changes to plans, specifications and prices without notice. E.O.&E. Square Footage is approximate.

Skaha Lake Towers Phase 3

skahalaketowers.ca

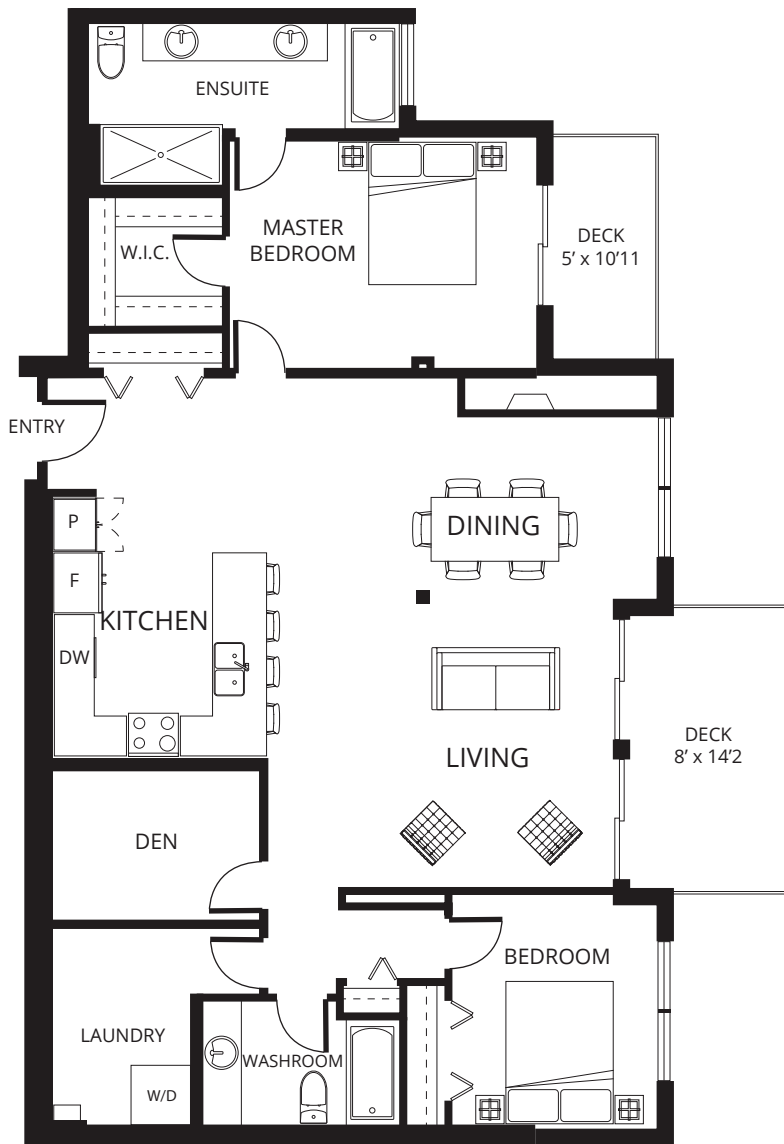
Plan E

13th Floor

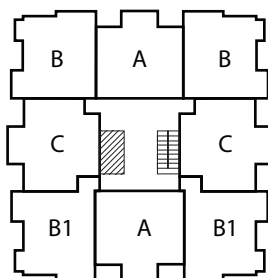
1,584 sq.ft.

2 bedroom

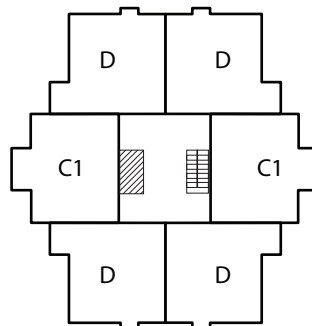
UNIT: 1303



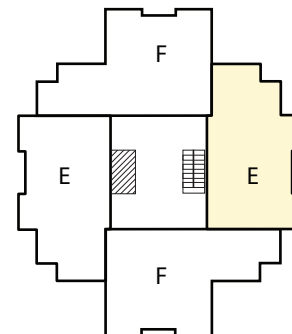
- Living: 17'11 x 14'
- Dining: 20' x 8'9"
- Kitchen: 9'11 x 13'
- Master: 15'3 x 11'4"
- Bedroom: 9'10 x 12'
- Den: 10'3 x 7'4"



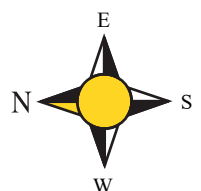
3rd to 10th Floor



11th and 12th Floor



13th and 14th Floor



Philip*, Diane*, Stephen* Fox

*Personal Real Estate Corporation

RE/MAX Penticton Realty

foxandfox@pentictonproperties.com

Toll Free: 1-800-652-6246

Phone: 250-492-2266

copyright 2022 Skaha Lake Towers

The developer reserves the right to make modifications and changes to plans, specifications and prices without notice. E.O.&E. Square Footage is approximate.

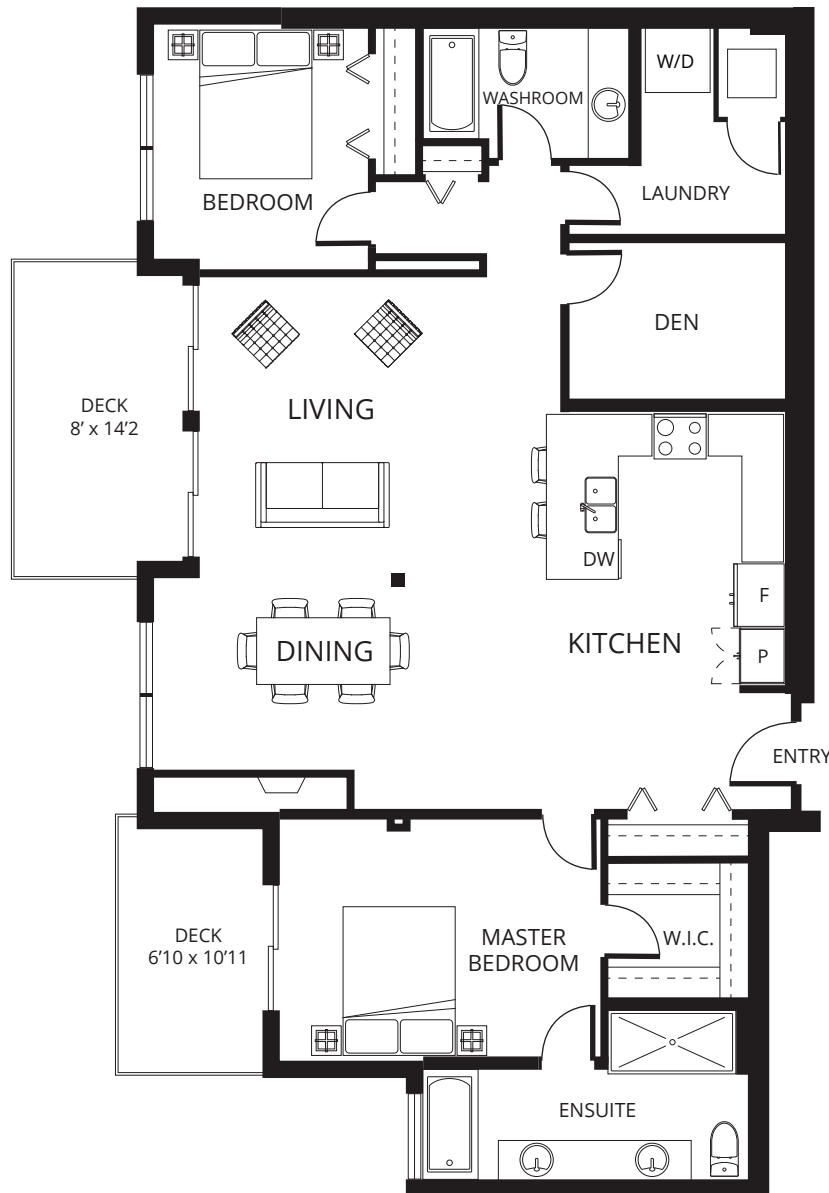
Skaha Lake Towers Phase 3

skahalaketowers.ca

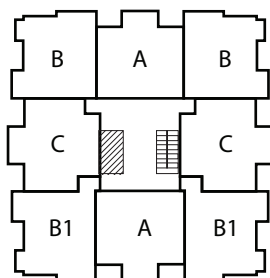
Plan E

14th Floor 1,584 sq.ft. 2 bedroom

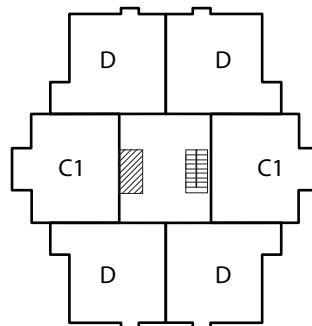
UNIT: 1401



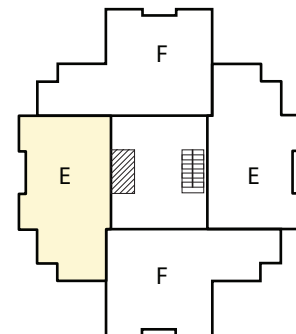
- Living: 17'11 x 14'
- Dining: 20' x 8'9"
- Kitchen: 9'11 x 13'
- Master: 15'3 x 11'4"
- Bedroom: 9'10 x 12'
- Den: 10'3 x 7'4"



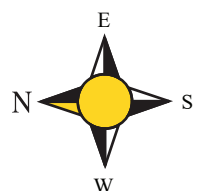
3rd to 10th Floor



11th and 12th Floor



13th and 14th Floor



Philip*, Diane*, Stephen* Fox
*Personal Real Estate Corporation

RE/MAX Penticton Realty
foxandfox@pentictonproperties.com

Toll Free: 1-800-652-6246
Phone: 250-492-2266

copyright 2022 Skaha Lake Towers

The developer reserves the right to make modifications and changes to plans, specifications and prices without notice. E.O.&E. Square Footage is approximate.

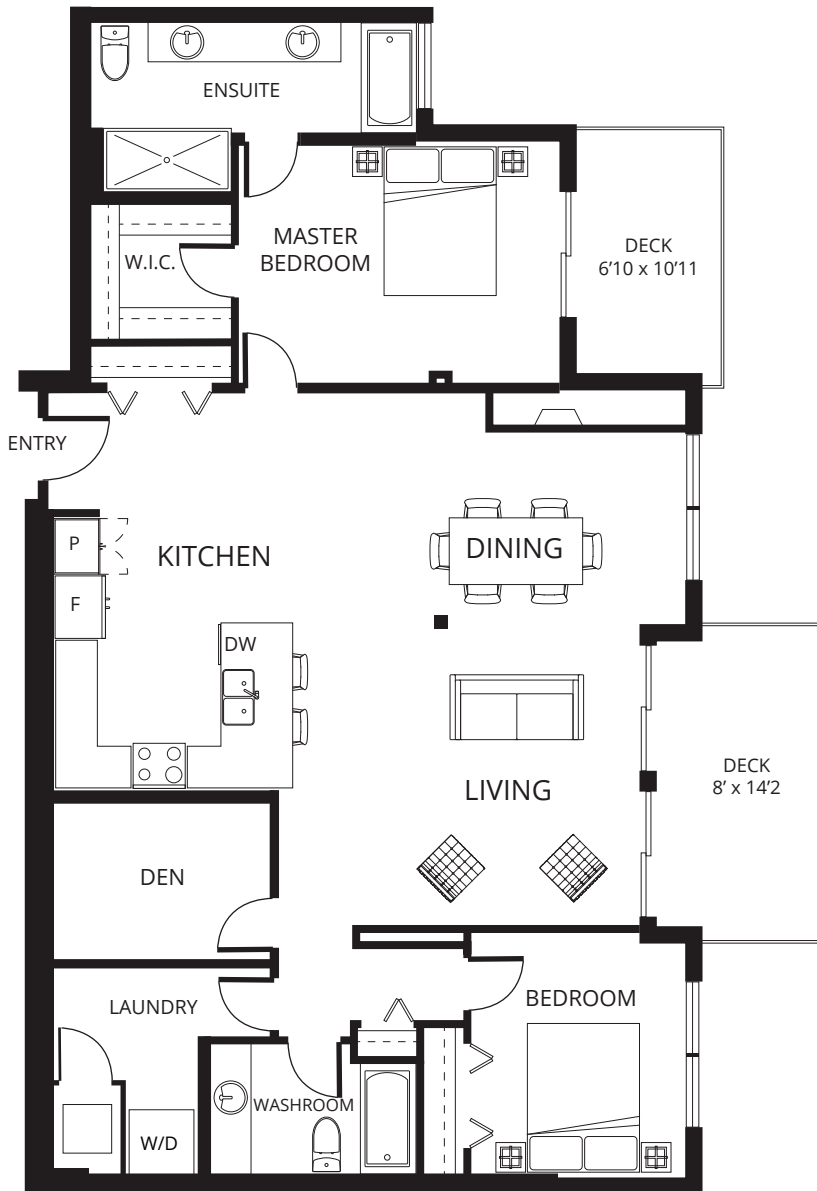
Skaha Lake Towers Phase 3

skahalaketowers.ca

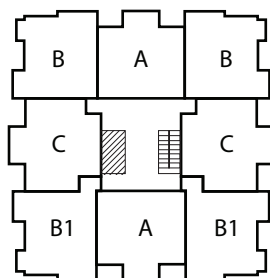
Plan E

14th Floor 1,584 sq.ft. 2 bedroom

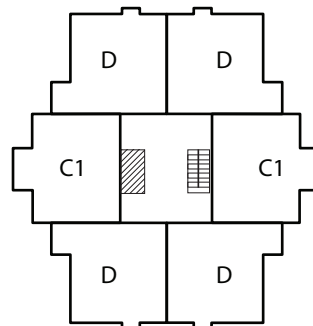
UNIT: 1403



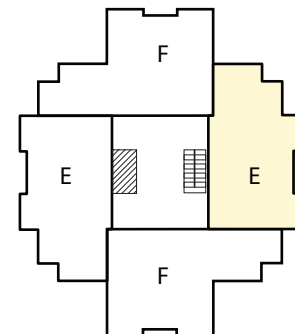
- Living: 17'11 x 14'
- Dining: 20' x 8'9"
- Kitchen: 9'11 x 13'
- Master: 15'3 x 11'4"
- Bedroom: 9'10 x 12'
- Den: 10'3 x 7'4"



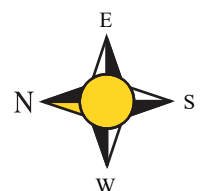
3rd to 10th Floor



11th and 12th Floor



13th and 14th Floor



Philip*, Diane*, Stephen* Fox

*Personal Real Estate Corporation

RE/MAX Penticton Realty

foxandfox@pentictonproperties.com

Toll Free: 1-800-652-6246

Phone: 250-492-2266

copyright 2022 Skaha Lake Towers

The developer reserves the right to make modifications and changes to plans, specifications and prices without notice. E.O.&E. Square Footage is approximate.