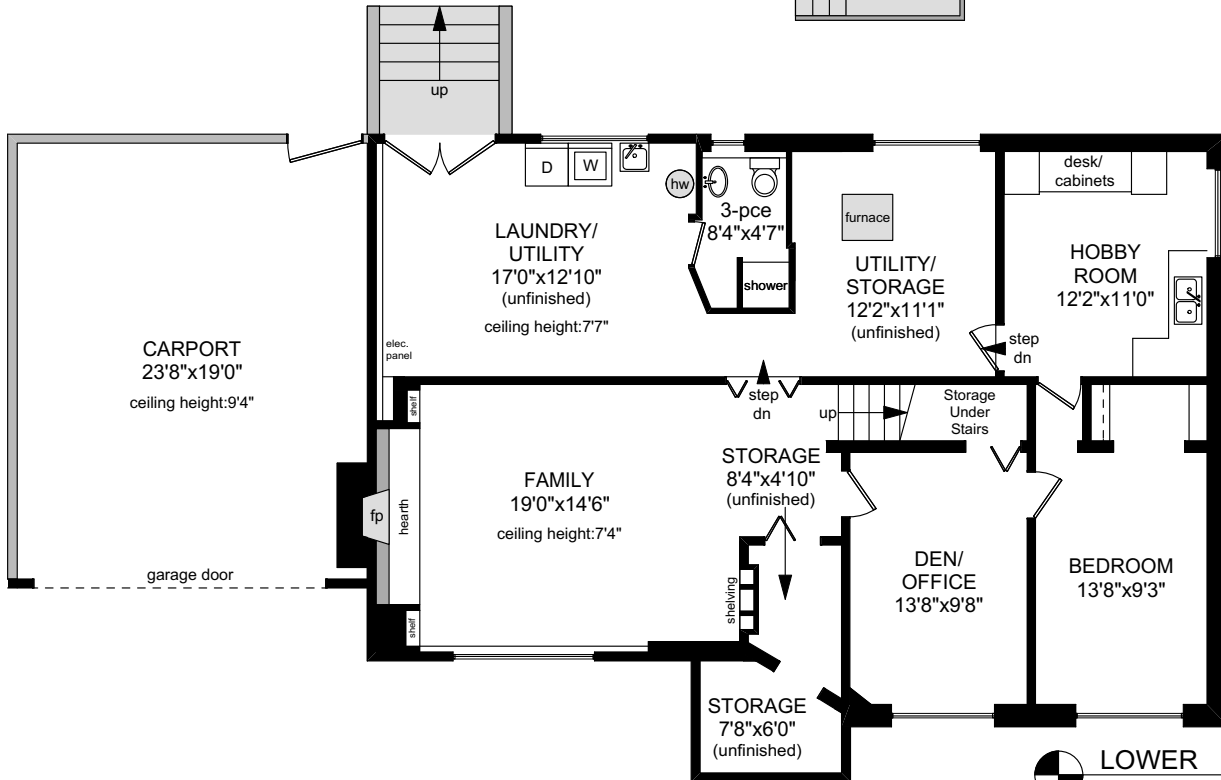


2175 KENDAL AVENUE

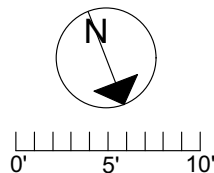
MAIN FLOOR
1476 SQ.FT.



LOWER FLOOR
1466 SQ.FT.

NOTE: The room name labels/sizes are for viewing reference only.
They are not used for calculating total square footage.

	FINISHED SQ. FT.	UNFINISHED SQ. FT.	TOTAL SQ. FT.
MAIN	1476	0	1476
LOWER	960	506	1466
TOTAL	2436	506	2942
CARPORT	0	480	480
DECK	0	184	184



PREPARED FOR THE EXCLUSIVE USE OF
PHILIP ILLINGWORTH OF DFH REAL ESTATE

MEASURED ON: 04/21/25
DRAWING FILE: 19138

Tafemeasure VICTORIA, B.C.
Ph.2508838894
www.tafemeasure.com