

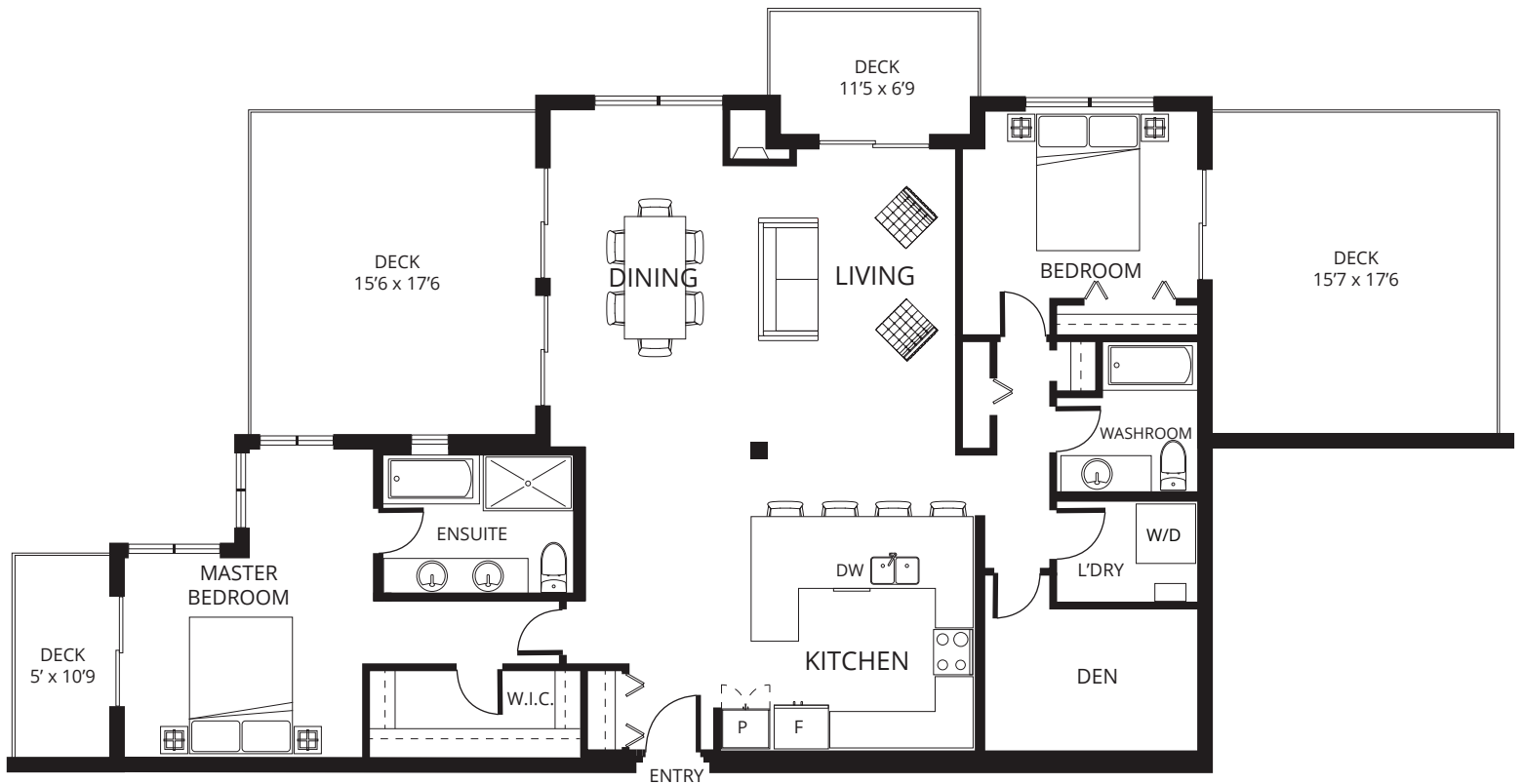
Skaha Lake Towers Phase 3

skahalaketowers.ca

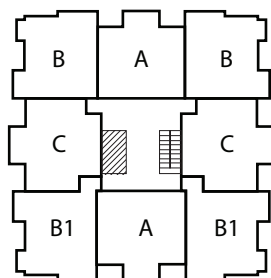
Plan F

13th Floor 1,702 sq.ft. 2 bedroom

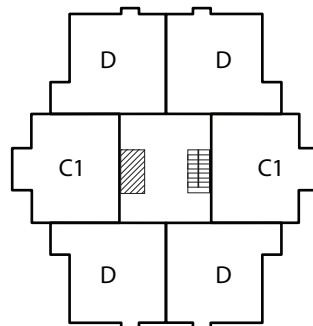
UNIT: 1304



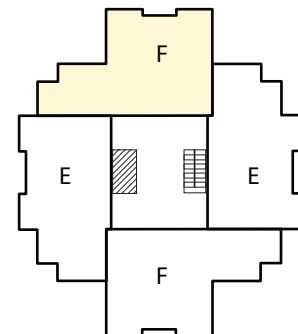
Living: 22'2 x 13'2
 Dining: 20' x 10'
 Kitchen: 13'7 x 11'9
 Master: 12'10 x 16'8
 Bedroom: 12'8 x 9'6
 Den: 11'5 x 7'7



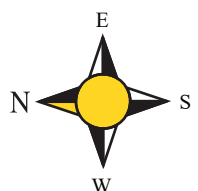
3rd to 10th Floor



11th and 12th Floor



13th and 14th Floor



Philip*, Diane*, Stephen* Fox

*Personal Real Estate Corporation

RE/MAX Penticton Realty

foxandfox@pentictonproperties.com

Toll Free: 1-800-652-6246

Phone: 250-492-2266

copyright 2022 Skaha Lake Towers

The developer reserves the right to make modifications and changes to plans, specifications and prices without notice. E.O.&E. Square Footage is approximate.

Skaha Lake Towers Phase 3

skahalaketowers.ca

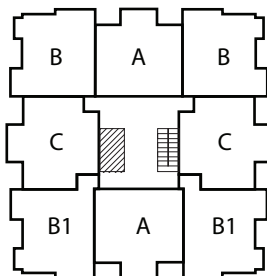
Plan F

13th Floor 1,702 sq.ft. 2 bedroom

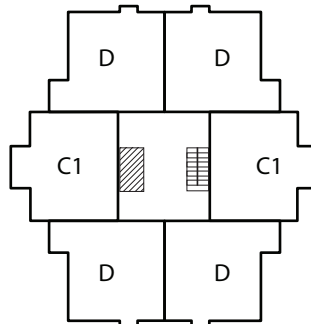
UNIT: 1302



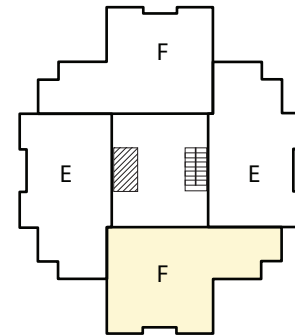
- Living: 22'2 x 13'2
- Dining: 20' x 10'
- Kitchen: 13'7 x 11'9
- Master: 12'10 x 16'8
- Bedroom: 12'8 x 9'6
- Den: 11'5 x 7'7



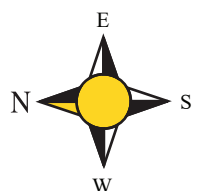
3rd to 10th Floor



11th and 12th Floor



13th and 14th Floor



Philip*, Diane*, Stephen* Fox
*Personal Real Estate Corporation

RE/MAX Penticton Realty
foxandfox@pentictonproperties.com

Toll Free: 1-800-652-6246
Phone: 250-492-2266

copyright 2022 Skaha Lake Towers

The developer reserves the right to make modifications and changes to plans, specifications and prices without notice. E.O.&E. Square Footage is approximate.

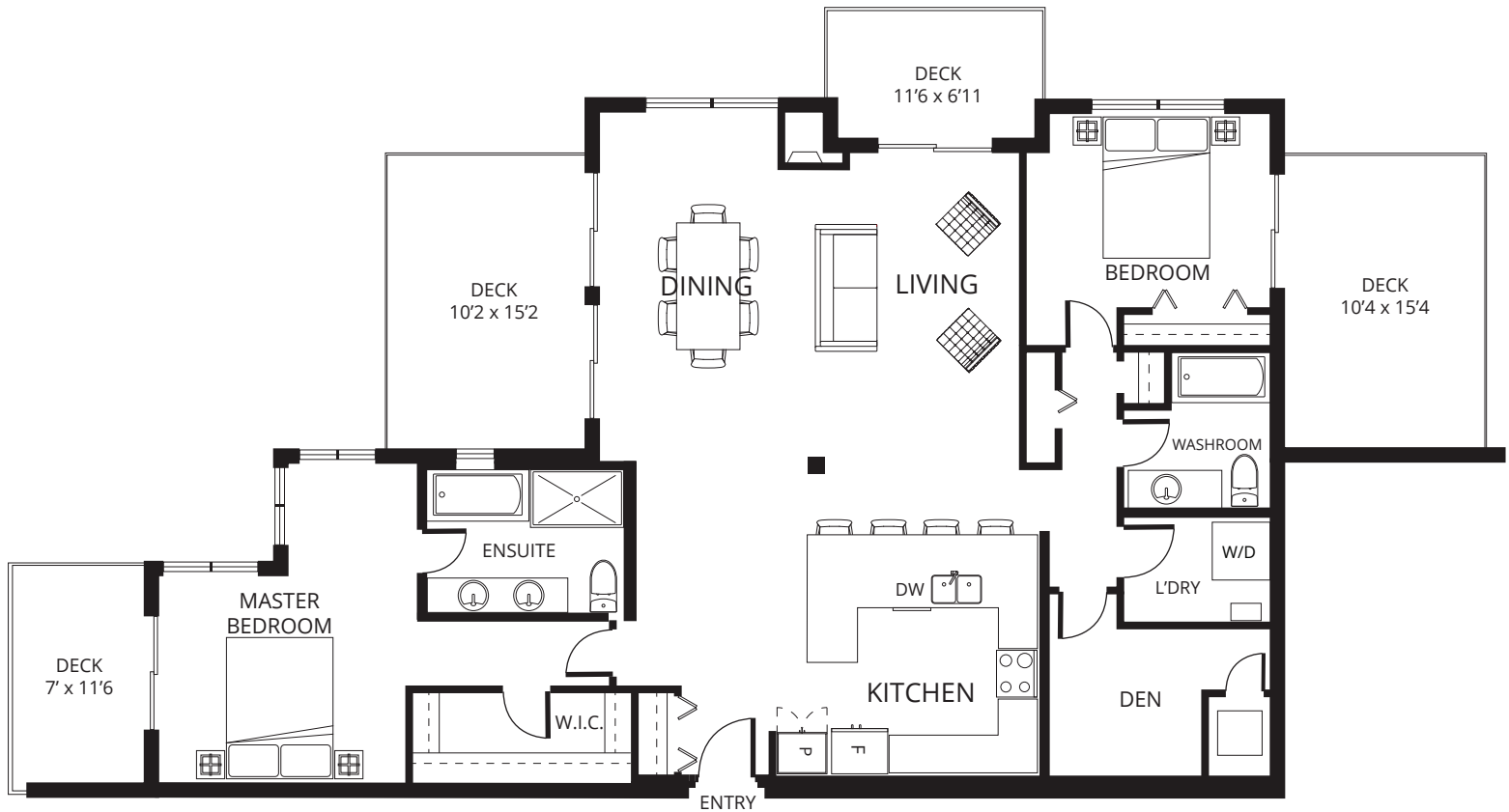
Skaha Lake Towers Phase 3

skahalaketowers.ca

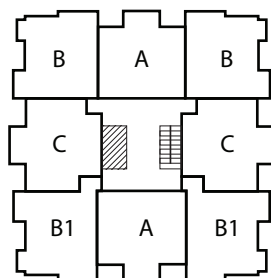
Plan F

14th Floor 1,702 sq.ft. 2 bedroom

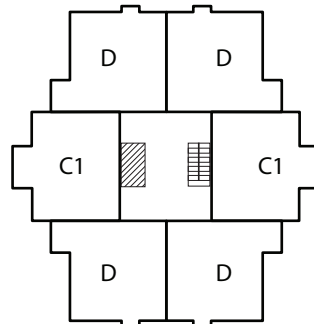
UNIT: 1404



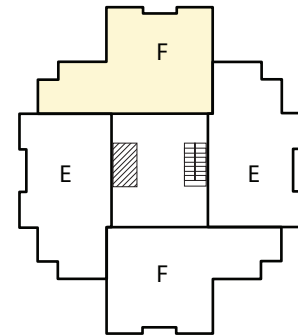
Living: 22'2 x 13'2
 Dining: 20' x 10'
 Kitchen: 13'7 x 11'9
 Master: 12'10 x 16'8
 Bedroom: 12'8 x 9'6
 Den: 11'5 x 7'7



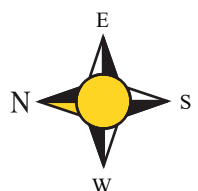
3rd to 10th Floor



11th and 12th Floor



13th and 14th Floor



Philip*, Diane*, Stephen* Fox

*Personal Real Estate Corporation

RE/MAX Penticton Realty

foxandfox@pentictonproperties.com

Toll Free: 1-800-652-6246

Phone: 250-492-2266

copyright 2022 Skaha Lake Towers

The developer reserves the right to make modifications and changes to plans, specifications and prices without notice. E.O.&E. Square Footage is approximate.

Skaha Lake Towers Phase 3

skahalaketowers.ca

Plan F

14th Floor

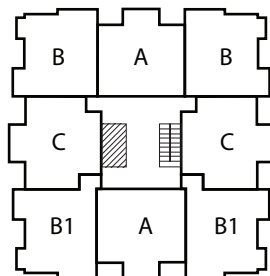
1,702 sq.ft.

2 bedroom

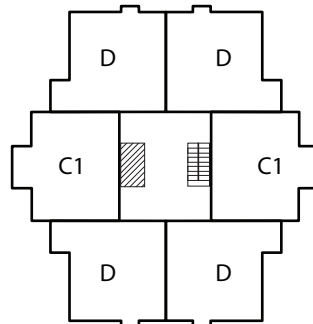
UNIT: 1402



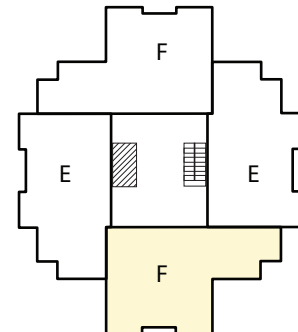
- Living: 22'2 x 13'2
- Dining: 20' x 10'
- Kitchen: 13'7 x 11'9
- Master: 12'10 x 16'8
- Bedroom: 12'8 x 9'6
- Den: 11'5 x 7'7



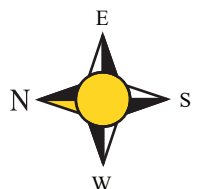
3rd to 10th Floor



11th and 12th Floor



13th and 14th Floor



Philip*, Diane*, Stephen* Fox

*Personal Real Estate Corporation

RE/MAX Penticton Realty

foxandfox@pentictonproperties.com

Toll Free: 1-800-652-6246

Phone: 250-492-2266

copyright 2022 Skaha Lake Towers

The developer reserves the right to make modifications and changes to plans, specifications and prices without notice. E.O.&E. Square Footage is approximate.