

# 101 Armstrong Pl, 1, Canmore, AB, T1W 3M2, Canada

Agents: Marc SEE

Grassroots Realty Group LTD

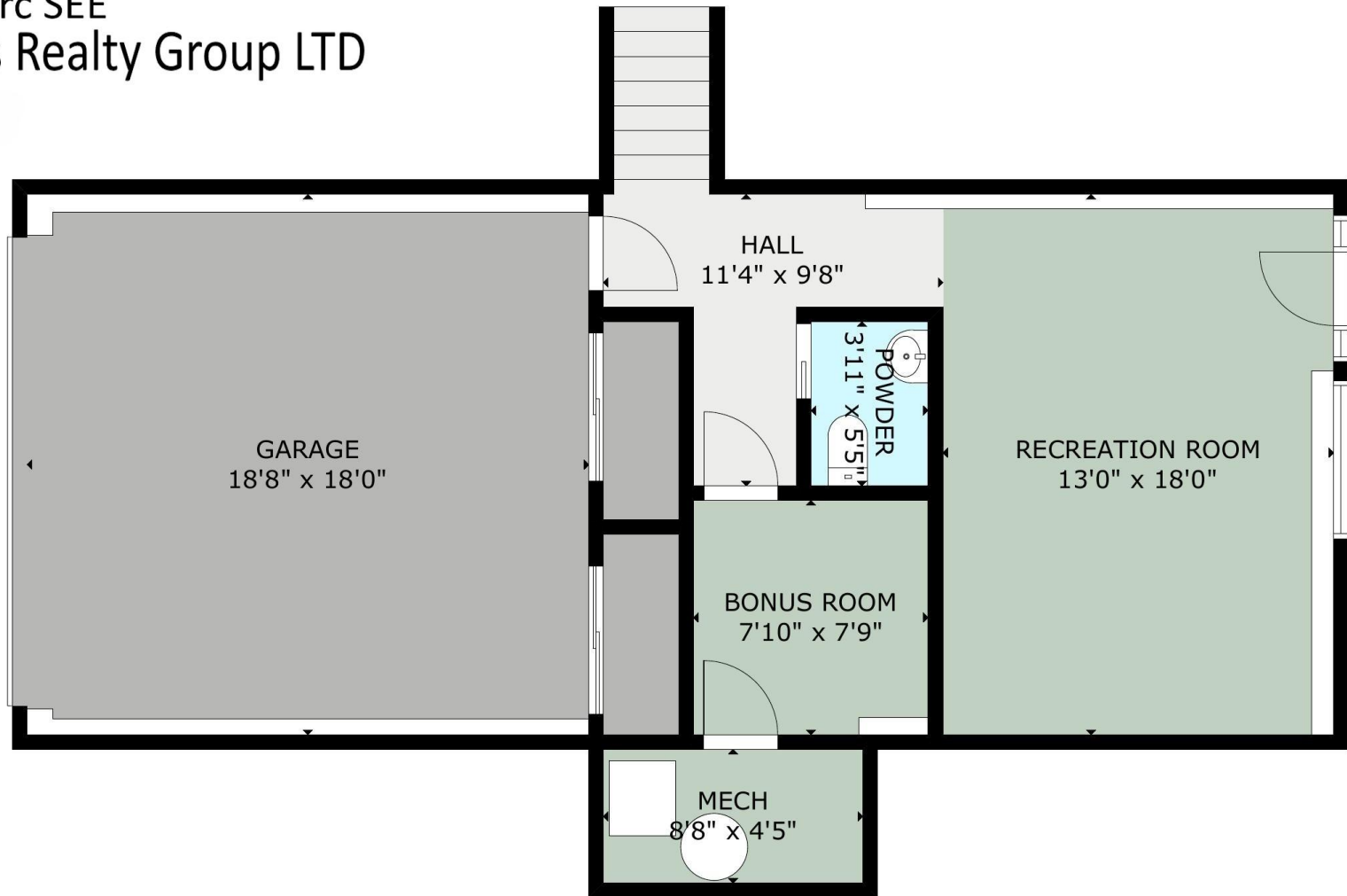


LIDAR Measurement performed on 2026MAR04  
ANSI® Z765-2021 ("ANSI standard")

GROSS EXTERNAL AREA  
TOTAL: 2,816 sq ft  
FLOOR 1: 553 sq ft, FLOOR 2: 1,100 sq ft  
FLOOR 3: 1,163 sq ft  
EXCLUDED AREAS: GARAGE: 377 sq ft FLOOR 3: 11 sq ft  
SIZE AND DIMENSIONS ARE APPROXIMATE, ACTUAL MAY VARY

# 101 Armstrong Pl, 1, Canmore, AB, T1W 3M2, Canada

Agents: Marc SEE  
Grassroots Realty Group LTD



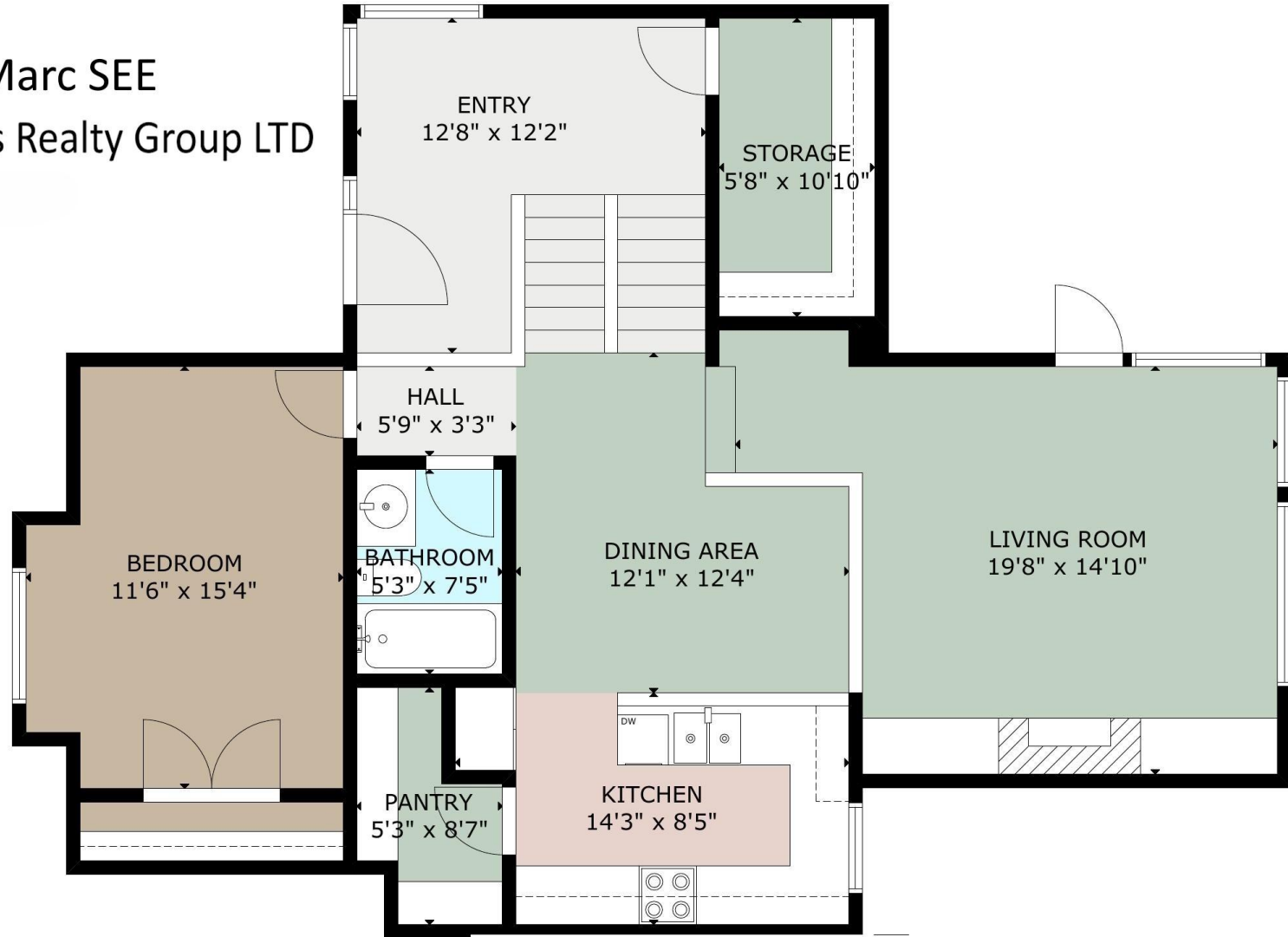
LIDAR Measurement performed on 2026MAR04  
ANSI® Z765-2021 ("ANSI standard")

FLOOR 1

GROSS EXTERNAL AREA  
TOTAL: 2,816 sq ft  
FLOOR 1: 553 sq ft, FLOOR 2: 1,100 sq ft  
FLOOR 3: 1,163 sq ft  
EXCLUDED AREAS: GARAGE: 377 sq ft FLOOR 3: 11 sq ft  
SIZE AND DIMENSIONS ARE APPROXIMATE, ACTUAL MAY VARY

# 101 Armstrong Pl, 1, Canmore, AB, T1W 3M2, Canada

Agents: Marc SEE  
Grassroots Realty Group LTD



LIDAR Measurement performed on 2026MAR04  
ANSI® Z765-2021 ("ANSI standard")

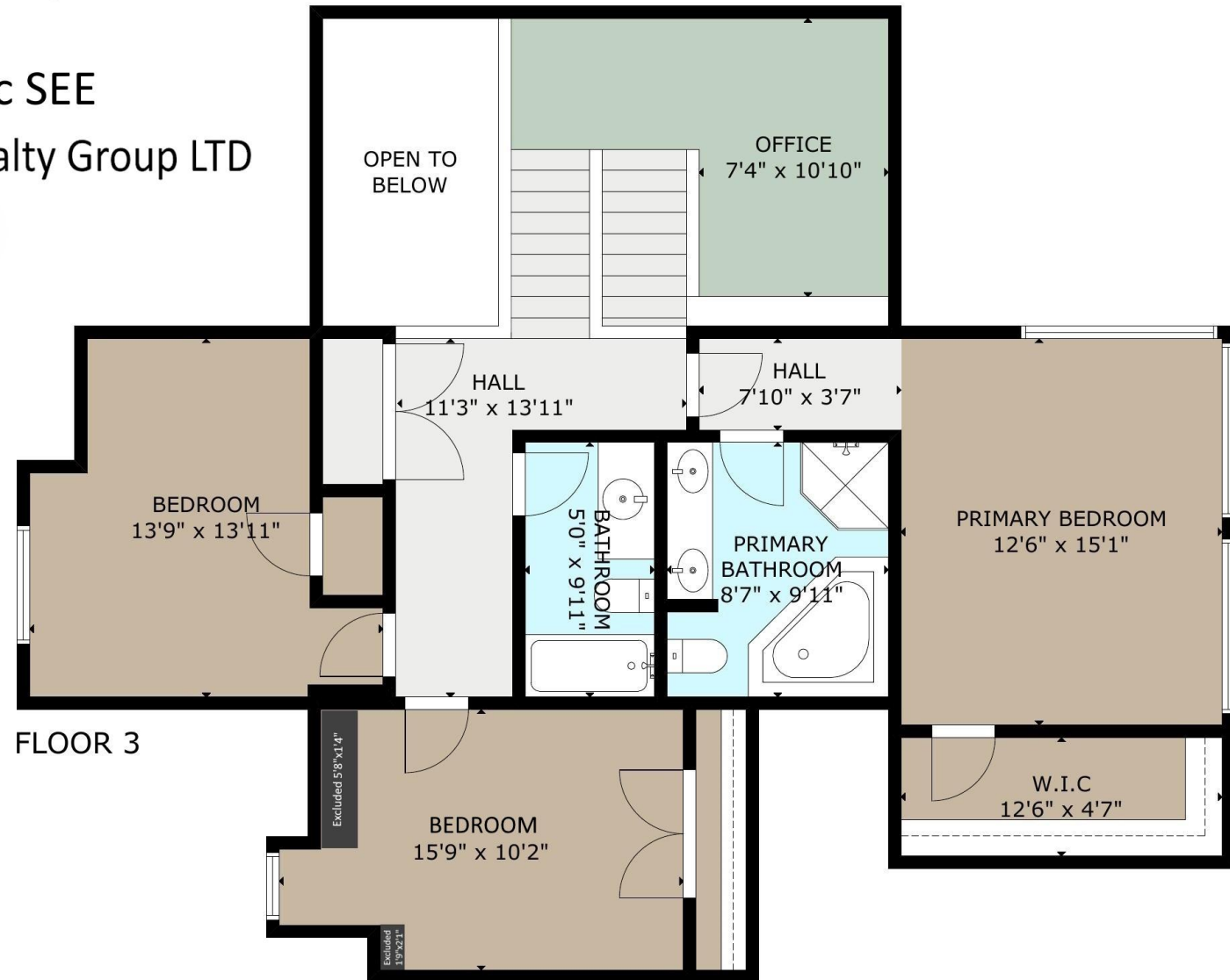
FLOOR 2

GROSS EXTERNAL AREA  
TOTAL: 2,816 sq ft  
FLOOR 1: 553 sq ft, FLOOR 2: 1,100 sq ft  
FLOOR 3: 1,163 sq ft  
EXCLUDED AREAS: GARAGE: 377 sq ft FLOOR 3: 11 sq ft  
SIZE AND DIMENSIONS ARE APPROXIMATE, ACTUAL MAY VARY

# 101 Armstrong Pl, 1, Canmore, AB, T1W 3M2, Canada

Agents: Marc SEE

Grassroots Realty Group LTD



FLOOR 3

LIDAR Measurement performed on 2026MAR04  
ANSI® Z765-2021 ("ANSI standard")

FLOOR 3

GROSS EXTERNAL AREA  
TOTAL: 2,816 sq ft  
FLOOR 1: 553 sq ft, FLOOR 2: 1,100 sq ft  
FLOOR 3: 1,163 sq ft  
EXCLUDED AREAS: GARAGE: 377 sq ft FLOOR 3: 11 sq ft  
SIZE AND DIMENSIONS ARE APPROXIMATE, ACTUAL MAY VARY