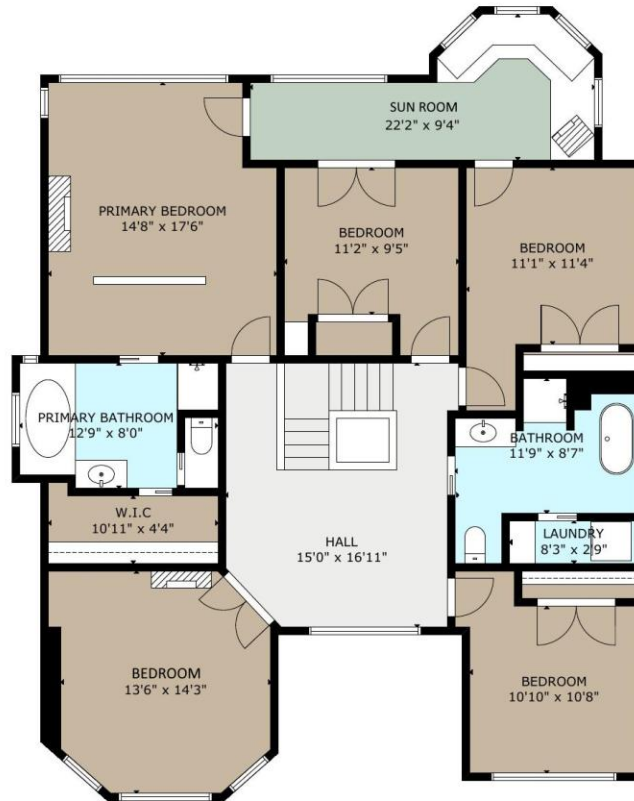


MAIN LEVEL



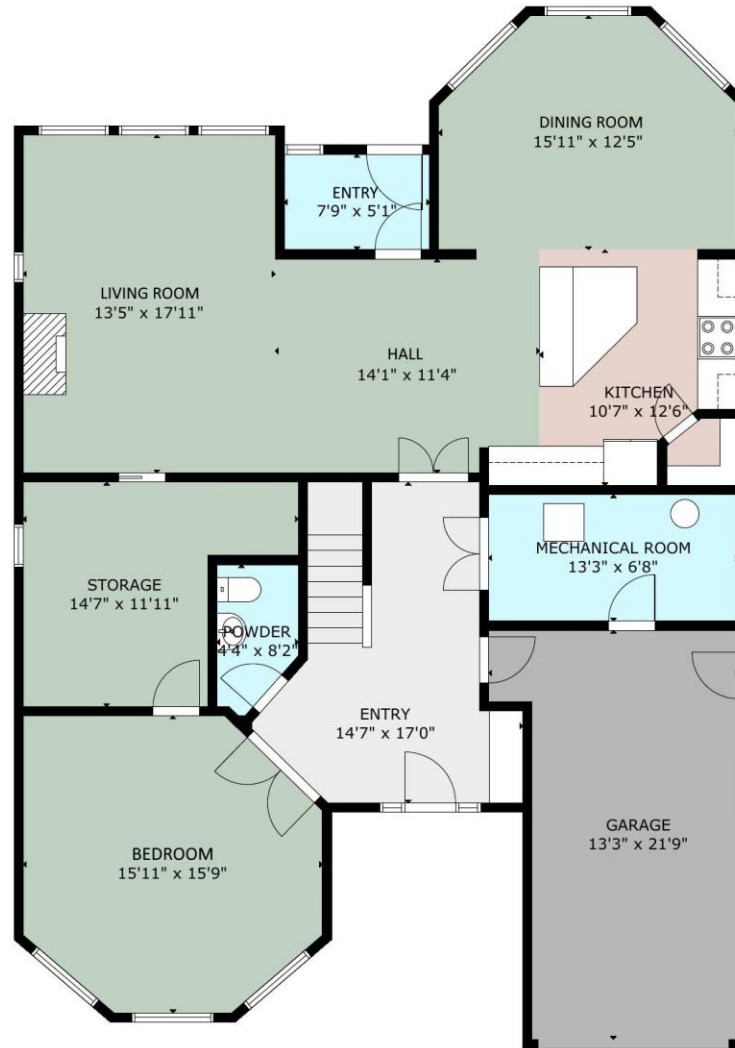
FIRST LEVEL



SECOND LEVEL

Agents: Marc SEE & Terri HARRISON  
 Grassroots Realty Group LTD  
 Date: 2026 MAY 21  
 Address: 533 1st ST Canmore AB  
 LIDAR measurement ANSI® Z765-2021 (ANSI standard)

GROSS EXTERNAL AREA  
 TOTAL: 4,015 sq ft  
 MAIN LEVEL: 1,542 sq ft, FIRST LEVEL: 1,687 sq ft  
 SECOND LEVEL: 786 sq ft  
 EXCLUDED AREAS: GARAGE: 246 sq ft. Areas below 1.5m ceiling height  
 SIZE AND DIMENSIONS ARE APPROXIMATE, ACTUAL MAY VARY



Agents: Marc SEE & Terri HARRISON

Grassroots Realty Group LTD

Date: 2026 MAY 21

Address: 533 1st ST Canmore AB

LIDAR measurement ANSI® Z765-2021 (ANSI standard)

MAIN LEVEL

GROSS EXTERNAL AREA  
 TOTAL: 4,015 sq ft  
 MAIN LEVEL: 1,542 sq ft, FIRST LEVEL: 1,687 sq ft  
 SECOND LEVEL: 786 sq ft  
 EXCLUDED AREAS: GARAGE: 246 sq ft. Areas below 1.5m ceiling height  
 SIZE AND DIMENSIONS ARE APPROXIMATE, ACTUAL MAY VARY



Agents: Marc SEE & Terri HARRISON

Grassroots Realty Group LTD

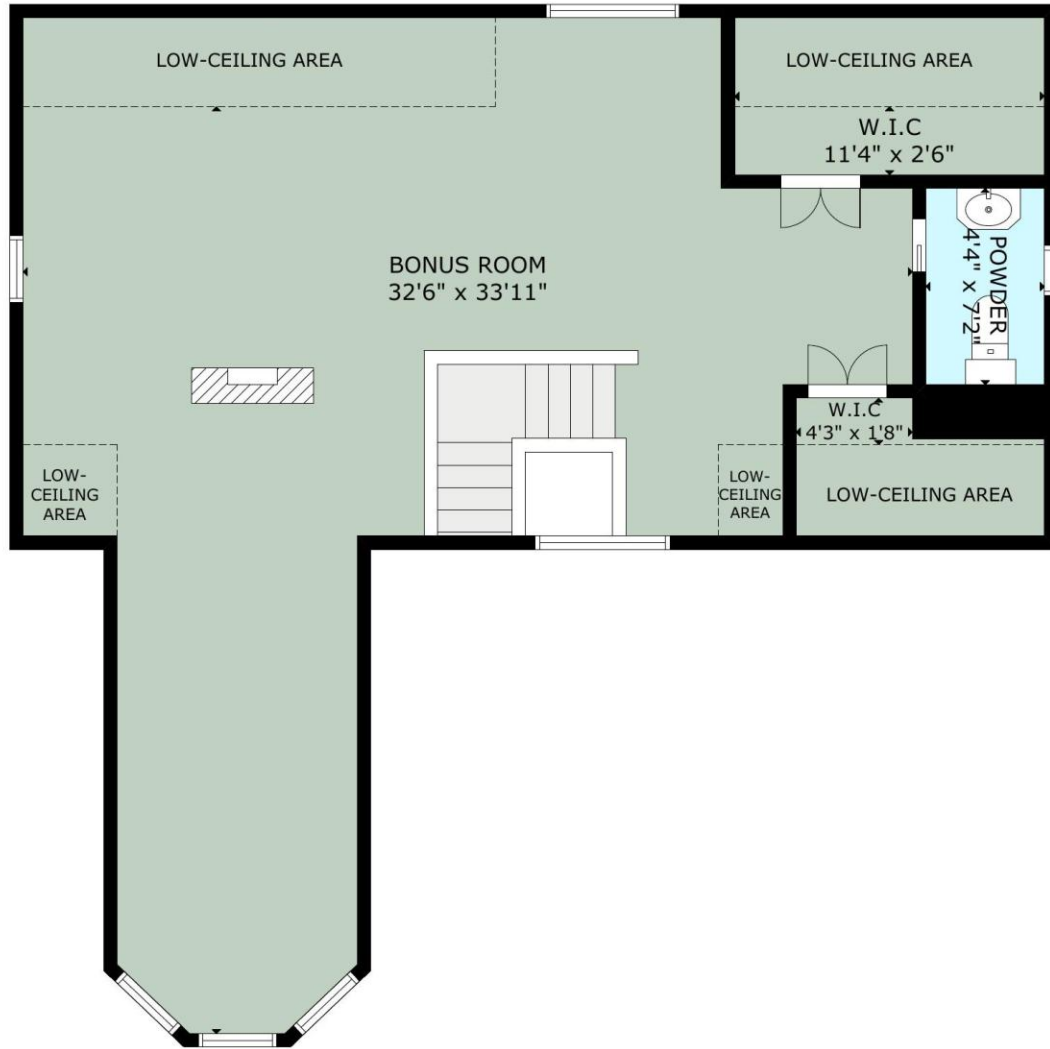
Date: 2026 MAY 21

Address: 533 1st ST Canmore AB

LIDAR measurement ANSI® Z765-2021 (ANSI standard)

SECOND LEVEL

GROSS EXTERNAL AREA  
 TOTAL: 4,015 sq ft  
 MAIN LEVEL: 1,542 sq ft, FIRST LEVEL: 1,687 sq ft  
 SECOND LEVEL: 786 sq ft  
 EXCLUDED AREAS: GARAGE: 246 sq ft. Areas below 1.5m ceiling height  
 SIZE AND DIMENSIONS ARE APPROXIMATE, ACTUAL MAY VARY



Agents: Marc SEE & Terri HARRISON

Grassroots Realty Group LTD

Date: 2026 MAY 21

Address: 533 1st ST Canmore AB

LIDAR measurement ANSI® Z765-2021 (ANSI standard)

SECOND LEVEL

GROSS EXTERNAL AREA  
 TOTAL: 4,015 sq ft  
 MAIN LEVEL: 1,542 sq ft, FIRST LEVEL: 1,687 sq ft  
 SECOND LEVEL: 786 sq ft  
 EXCLUDED AREAS: GARAGE: 246 sq ft. Areas below 1.5m ceiling height  
 SIZE AND DIMENSIONS ARE APPROXIMATE, ACTUAL MAY VARY