

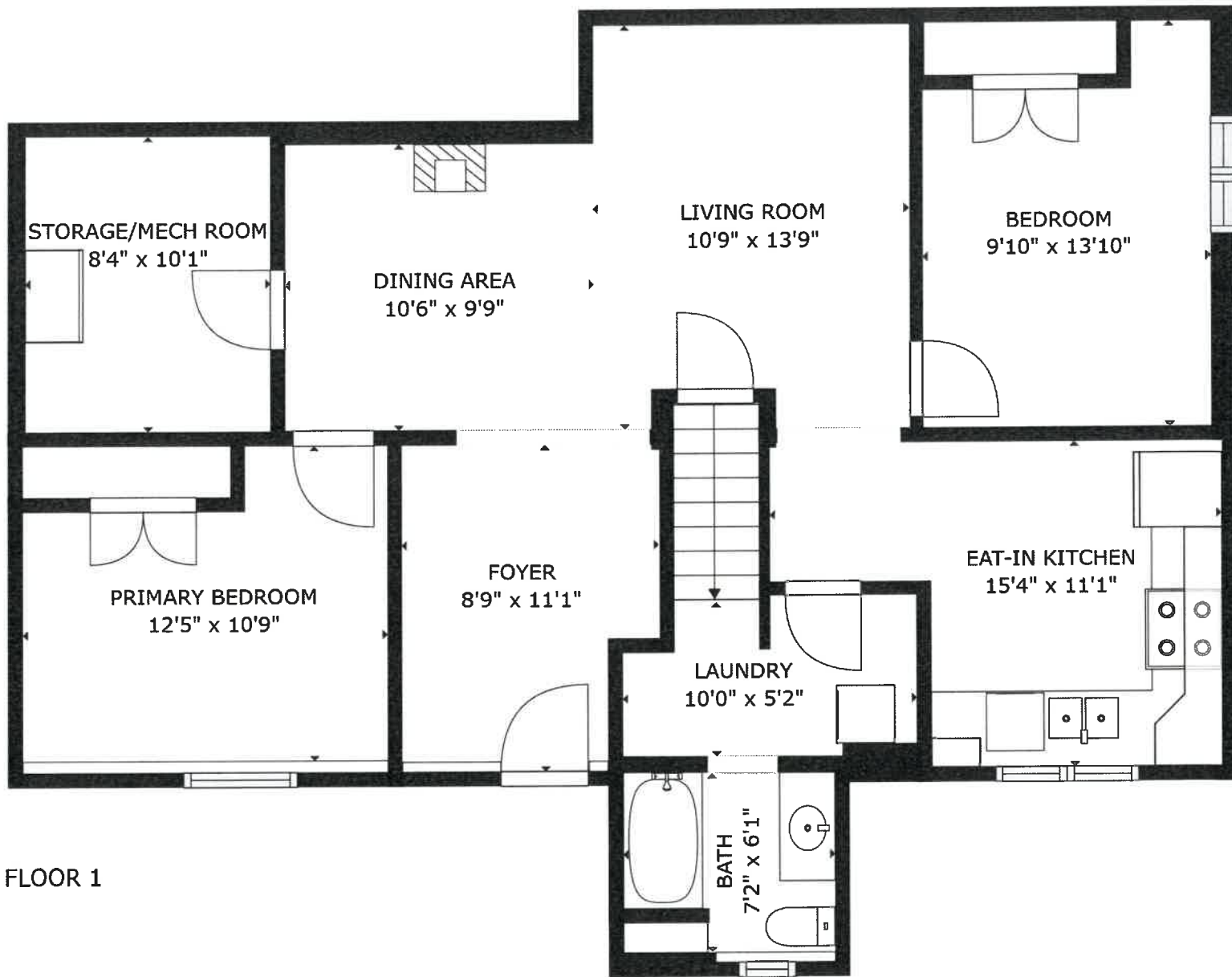


FLOOR 1

Unit A - 4621 Manson Ave, Powell River, BC

GROSS INTERNAL AREA
 FLOOR 1: 1058 sq. ft, EXCLUDED AREAS:
 PATIO: 248 sq. ft
 TOTAL: 1058 sq. ft

SIZES AND DIMENSIONS ARE APPROXIMATE. ACTUAL MAY VARY.



FLOOR 1

Unit B - 4621 Manson Ave, Powell River, BC

GROSS INTERNAL AREA
FLOOR 1: 999 sq. ft
TOTAL: 999 sq. ft

SIZES AND DIMENSIONS ARE APPROXIMATE, ACTUAL MAY VARY.