

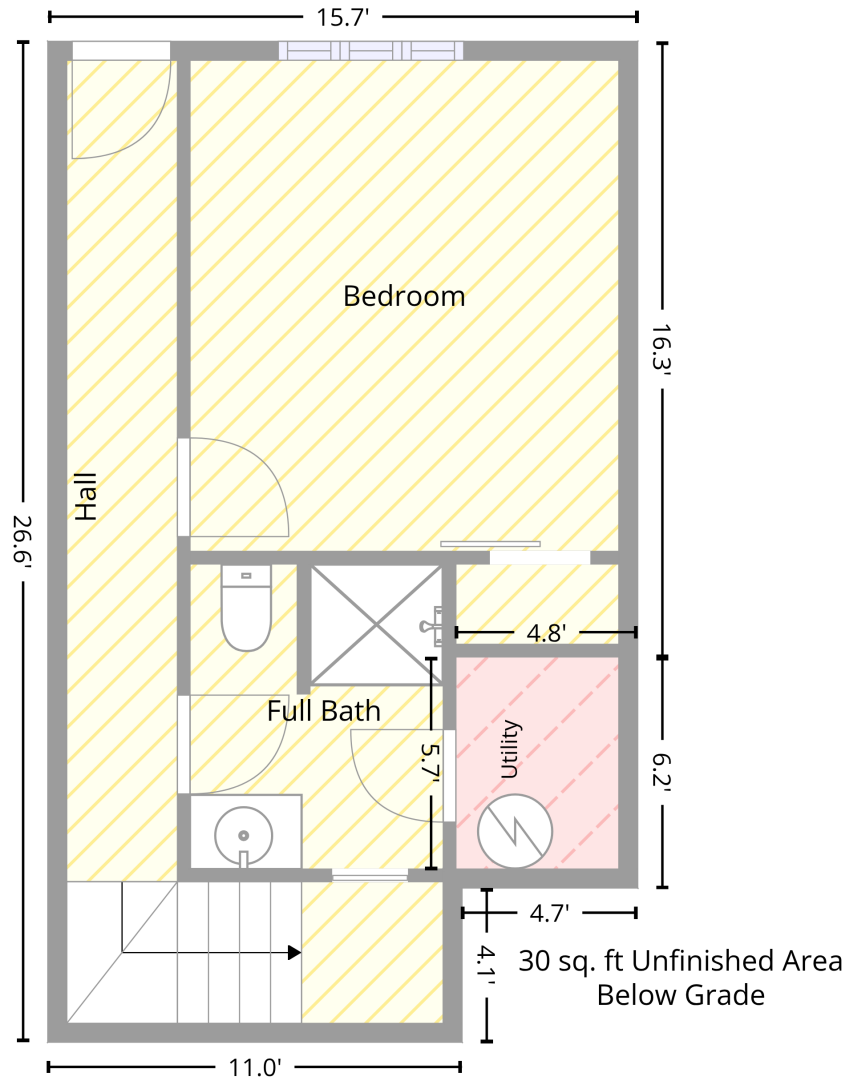
10971 Snyder Road, Arbor Vitae, Wisconsin 54568, United States

Total area: 1769 sq. ft
Gross living area: 1331 sq. ft

Finished area: 1698 sq. ft
Non-standard finished area: 0 sq. ft

Level 1 - Below Grade

367 sq. ft Finished Area
Below Grade



Total area: 397 sq. ft
Gross living area: 0 sq. ft

Finished area: 367 sq. ft
Non-standard finished area: 0 sq. ft

10971 Snyder Road, Arbor Vitae, Wisconsin 54568, United States

Total area: 1769 sq. ft
Gross living area: 1331 sq. ft

Finished area: 1698 sq. ft
Non-standard finished area: 0 sq. ft

Level 1 - Below Grade

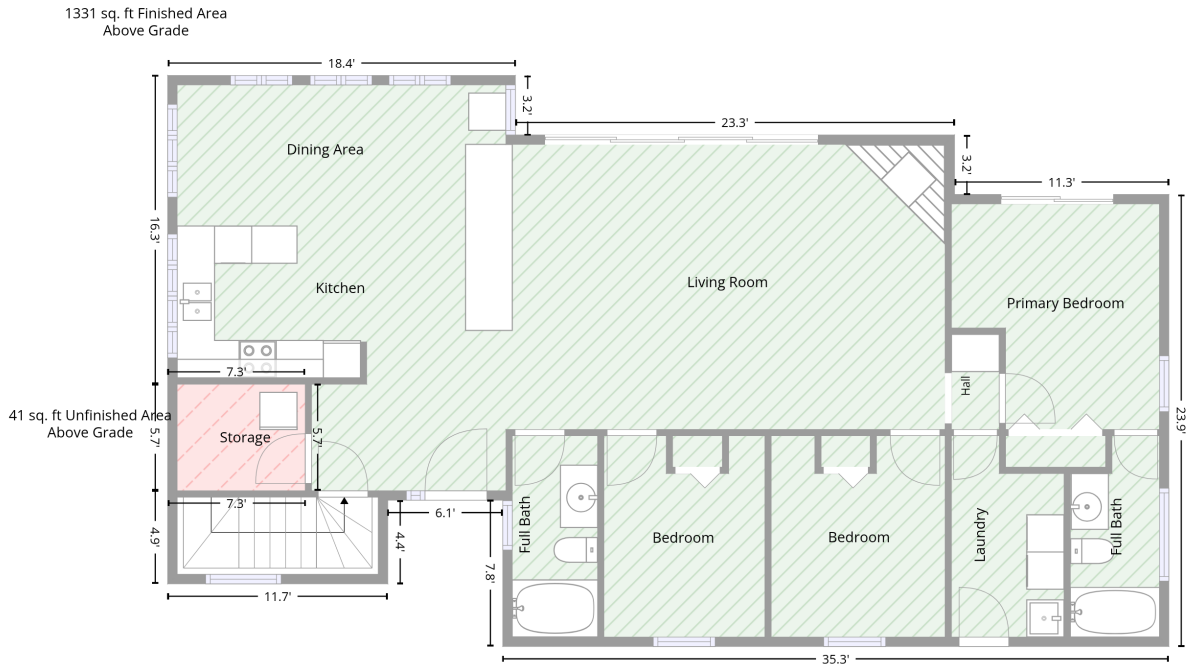
Space	Area (sq. ft)	Calculation <small>Coordinate Polygon Area Algorithm using inches</small>
Finished Area • Living area • Finished Area	367	$-\left((109.4 + 109.4) * (166 - 362.2) + (109.4 + 51.5) * (362.2 - 362.2) + (51.5 + 51.5) * (362.2 - 429.8) + (51.5 + 47.5) * (429.8 - 429.8) + (47.5 + 53.5) * (429.8 - 435.8) + (53.5 + 53.5) * (435.8 - 485) + (53.5 + -78.4) * (485 - 485) + (-78.4 + -78.4) * (485 - 166) + (-78.4 + 109.4) * (166 - 166)\right) * 0.5 * 0.00694$
UTILITY • Non-living area • Unfinished Area	30	$-\left((109.4 + 109.4) * (362.2 - 435.8) + (109.4 + 53.5) * (435.8 - 435.8) + (53.5 + 47.5) * (435.8 - 429.8) + (47.5 + 51.5) * (429.8 - 429.8) + (51.5 + 51.5) * (429.8 - 362.2) + (51.5 + 109.4) * (362.2 - 362.2)\right) * 0.5 * 0.00694$

10971 Snyder Road, Arbor Vitae, Wisconsin 54568, United States

Total area: 1769 sq. ft
Gross living area: 1331 sq. ft

Finished area: 1698 sq. ft
Non-standard finished area: 0 sq. ft

Level 2



Total area: 1372 sq. ft
Gross living area: 1331 sq. ft

Finished area: 1331 sq. ft
Non-standard finished area: 0 sq. ft

Space	Area (sq. ft)	Calculation <small>Coordinate Polygon Area Algorithm using inches</small>
Finished Area • Living area • Finished Area	1331	$ \begin{aligned} & -((138.6 + 138.6) * (166 - 203.8) + (138.6 + 417.7) * (203.8 - 203.8) + (417.7 + 417.7) * (203.8 - 241.6) \\ & + (417.7 + 553.9) * (241.6 - 241.6) + (553.9 + 553.9) * (241.6 - 528.7) + (553.9 + 130.6) * \\ & (528.7 - 528.7) + (130.6 + 130.6) * (528.7 - 435.8) + (130.6 + 57.5) * (435.8 - 435.8) + (57.5 + \\ & 57.5) * (435.8 - 489) + (57.5 + -82.4) * (489 - 489) + (-82.4 + -82.4) * (489 - 429.8) + (-82.4 + 5.1) \\ & * (429.8 - 429.8) + (5.1 + 5.1) * (429.8 - 362.2) + (5.1 + -82.4) * (362.2 - 362.2) + (-82.4 + -82.4) * \\ & (362.2 - 166) + (-82.4 + 138.6) * (166 - 166)) * 0.5 * 0.00694 \end{aligned} $
STORAGE • Non-living area • Unfinished Area	41	$ \begin{aligned} & -((5.1 + 5.1) * (362.2 - 429.8) + (5.1 + -82.4) * (429.8 - 429.8) + (-82.4 + -82.4) * (429.8 - 362.2) + \\ & (-82.4 + 5.1) * (362.2 - 362.2)) * 0.5 * 0.00694 \end{aligned} $

10971 Snyder Road, Arbor Vitae, Wisconsin 54568, United States

Total area: 1769 sq. ft
Gross living area: 1331 sq. ft

Finished area: 1698 sq. ft
Non-standard finished area: 0 sq. ft

Property UPD

Data	Value
Structure	1
Unit	1
Level Number	1
Below Grade	true
Level Low Ceiling	false
ADU Indicator	false
Total Area	397
Finished Area	367
Non-Standard Finished Area	0
Structure	1
Unit	1
Level Number	2
Below Grade	false
Level Low Ceiling	false
ADU Indicator	false
Total Area	1372
Finished Area	1331
Non-Standard Finished Area	0