

26'

9'

11'-2 1/2"

5'-9 1/2"

DBL. AWNING
5019AW

29.5x47.5
2640DH

5'7x21
15'-10"

BEDROOM #1

TRAY CEILING
RAISED 12"

10'-10 1/2"

14'-0 1/2"

11'-10"

6'-10 1/2"

BATH 1

8'-10 1/2"

3'-1"

3'

28610
SB482132

28610
3'-3"

28610
SB302132

8'-10 1/2"

PWDR. / LAU.

ATTIC
ACCESS

28610

12'-2 1/2"

28610
3'-4"

9'-11"

40610

2'-1"

2'

FLAT CLG.

8'-5 1/2"

12'-9"

3'-4"

DN

RAISED FLOOR
SEE STAIR SEC.

3'-6"

28610

OPEN FLOOR RAILING

72°

KITCHEN

60"

9'-0 1/2"

DINING

PC TRUSSES
6/12 INT / EXT. PITCH

SLOPED CEILING

FREESTANDING
FIREPLACE
W/ METAL CHIMNEY

CUSTOM TRAP. ABOVE

CUSTOM TRAP. ABOVE

DESK

D.W.

201/2 Drywall

23.5x41.5

35.5x41.5

Windows 5/2x

59.5x51.5

59.5x59.5

Top 71.5x51.5

10'-11"

12'-2"

8'-11"

32'

6'

7'

12'

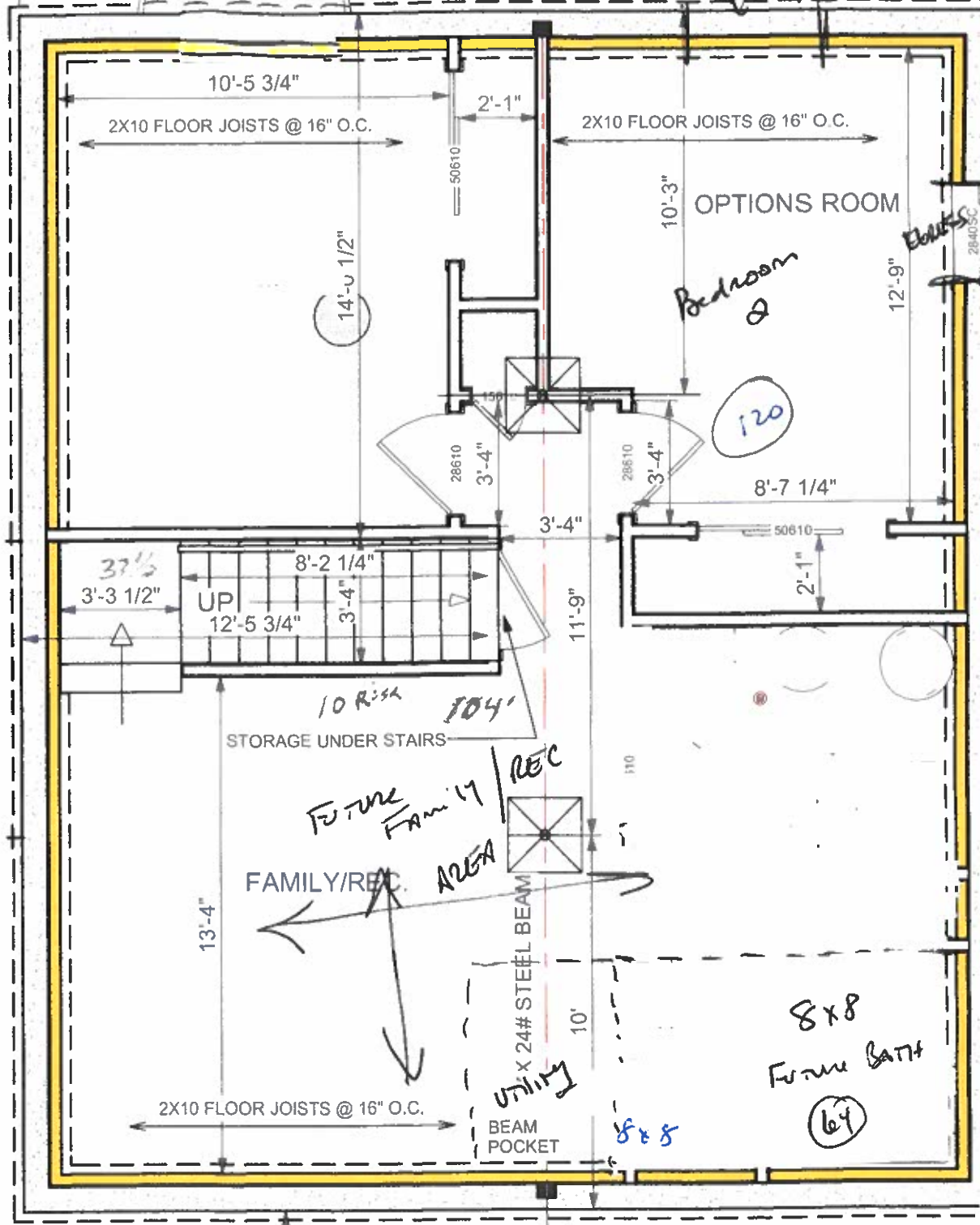
7'

26'

26'

BEAM POCKET

GLASS WINDOW



2X8 JOISTS @ 16" O.C.



NG FOUNDATION

PADS
ROCKETS MAYBE REQ'D.

2x8 JOISTS @ 16" O.C.

2X10 DIM BEAM