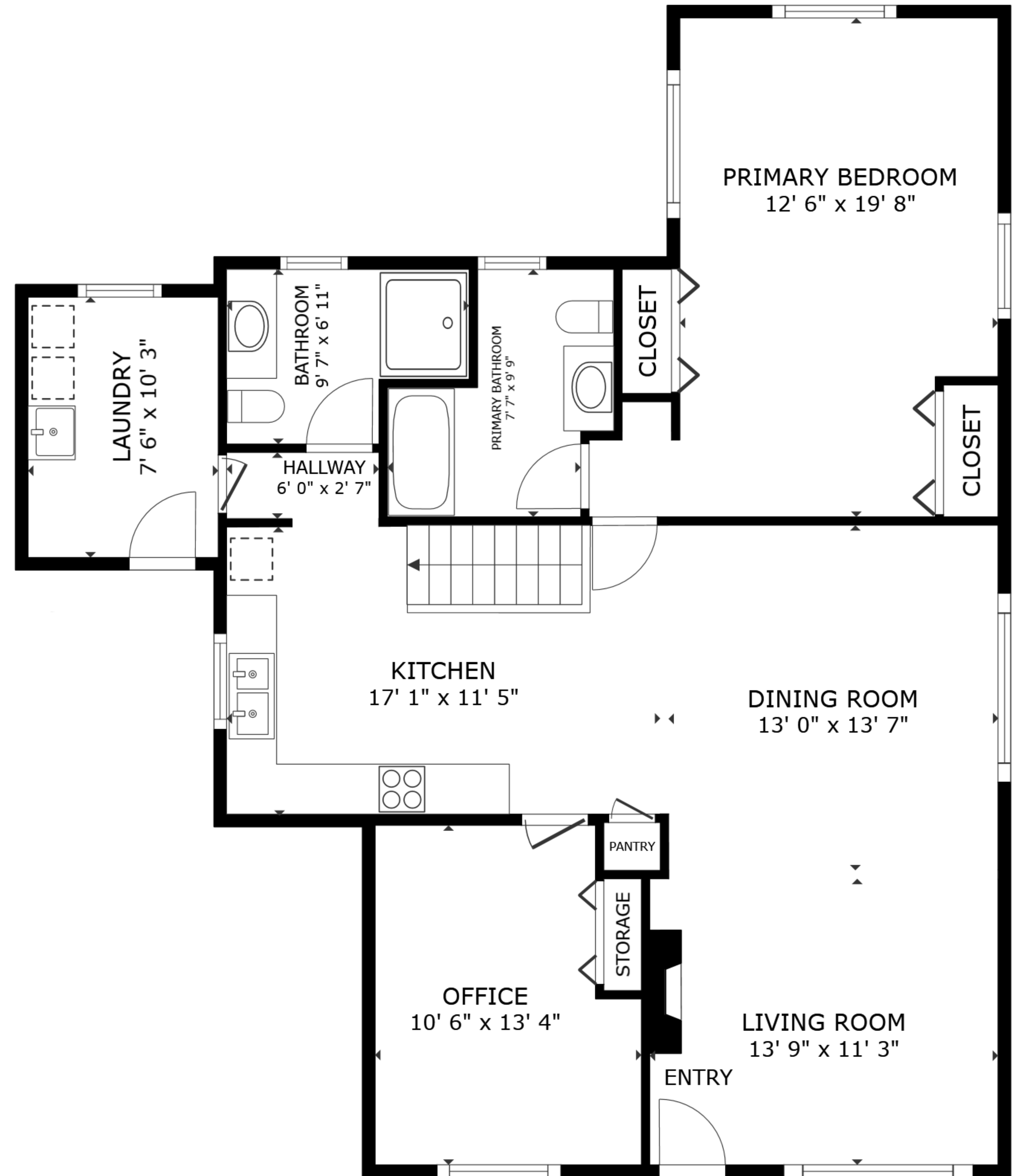


FLOOR 1



FLOOR 2

4311 Westview Ave, Powell River, BC

GROSS INTERNAL AREA
 FLOOR 1 975 sq.ft. FLOOR 2 1,194 sq.ft.
 TOTAL : 2,169 sq.ft.

SIZES AND DIMENSIONS ARE APPROXIMATE, ACTUAL MAY VARY.