

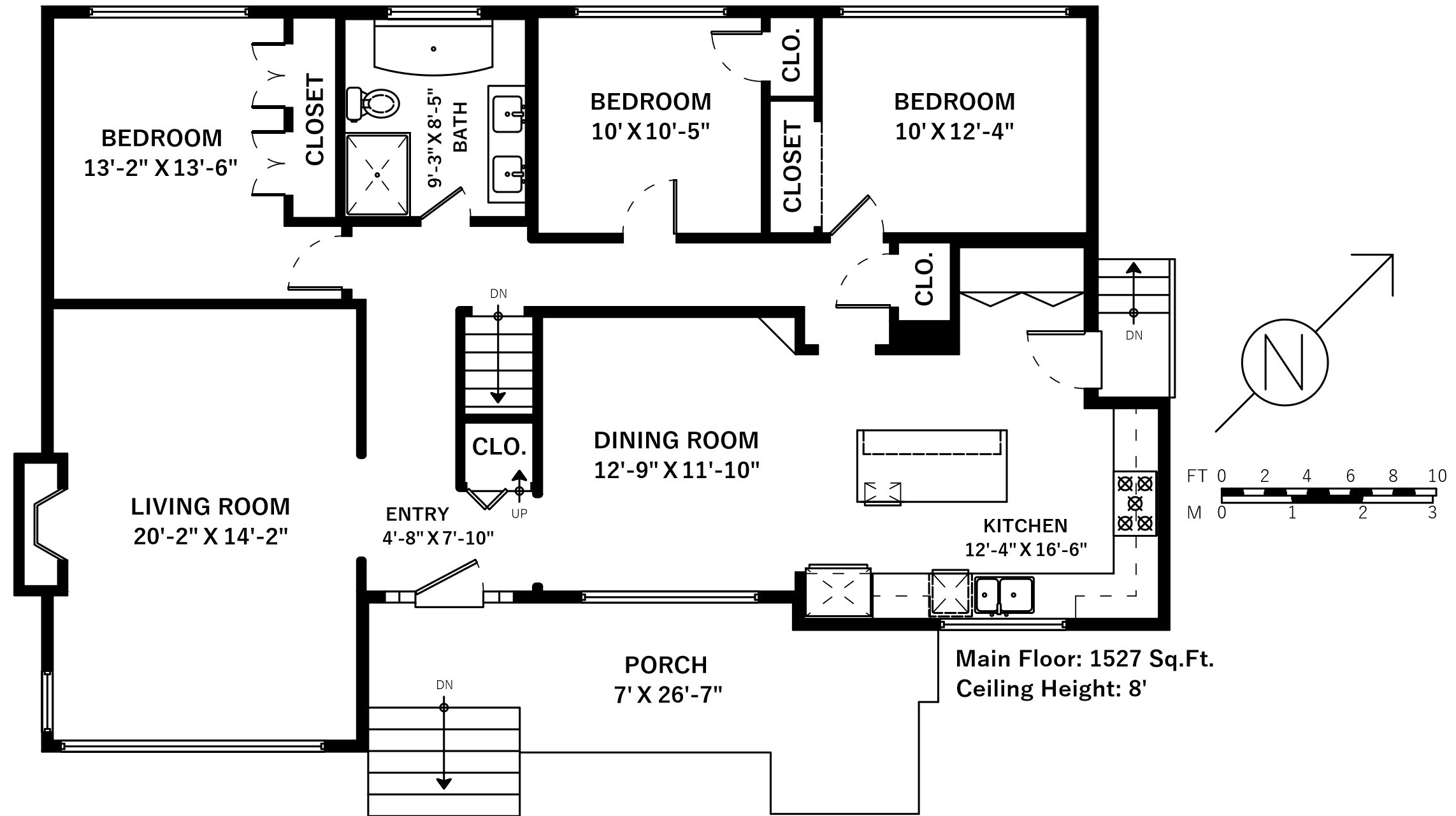
3026 OAKDOWNE RD

VICTORIA, BC

Main Floor	1527 SQ.FT.
Lower Floor	985 SQ.FT.
Total	2512 SQ.FT.

Patio	444 SQ.FT.
Porch	180 SQ.FT.
Garage	306 SQ.FT.
Total Extras	930 SQ.FT.

Lower Floor Unfinished 236 SQ.FT.



[WWW.RICKHUMPHRIES.COM](http://www.rickhumphries.com)

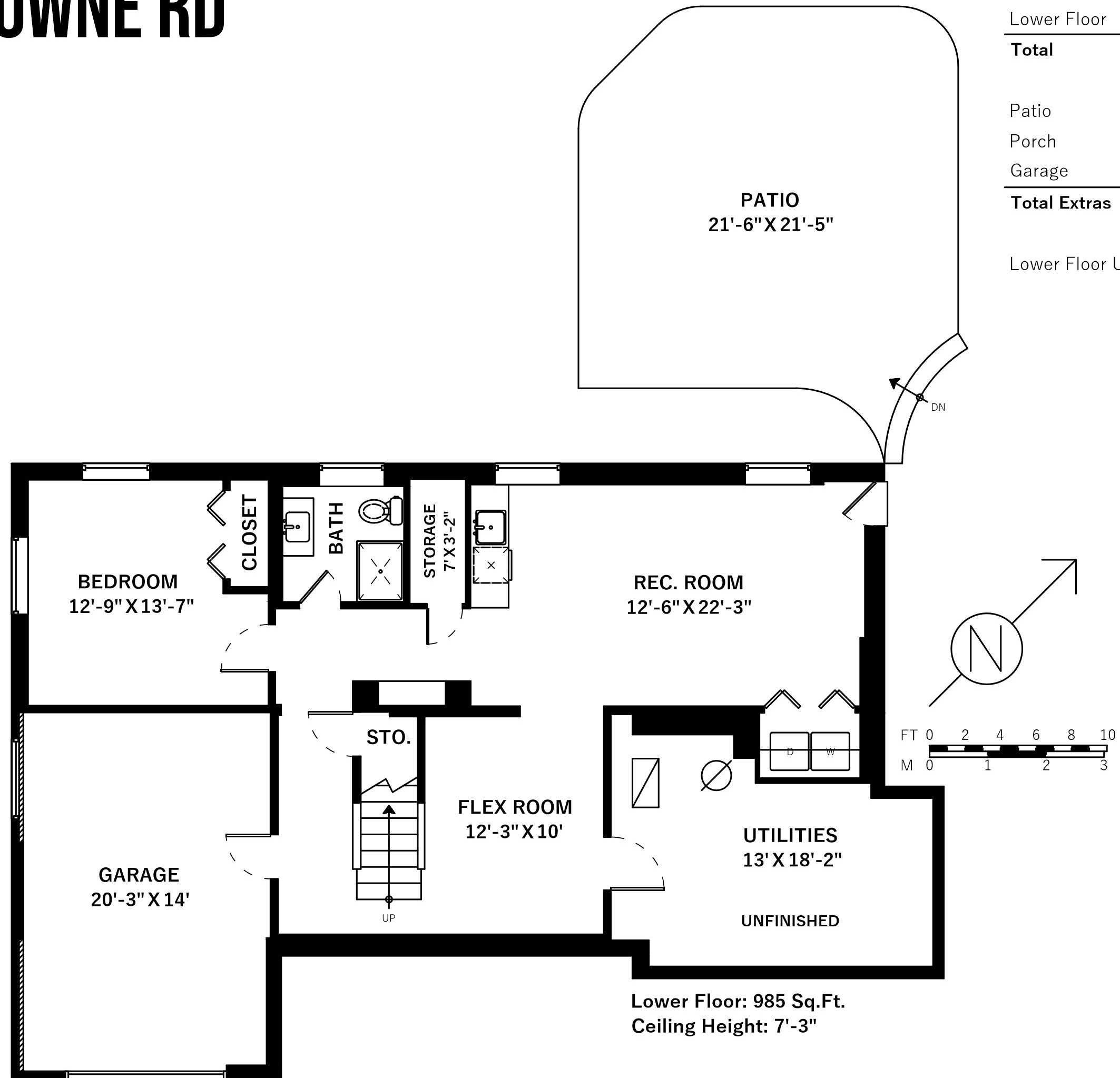
SUPPLIED BY:



3026 OAKDOWNE RD

VICTORIA, BC

Main Floor	1527 SQ.FT.
Lower Floor	985 SQ.FT.
Total	2512 SQ.FT.
Patio	444 SQ.FT.
Porch	180 SQ.FT.
Garage	306 SQ.FT.
Total Extras	930 SQ.FT.
Lower Floor Unfinished	236 SQ.FT.



WWW.RICKHUMPHRIES.COM

SUPPLIED BY:

