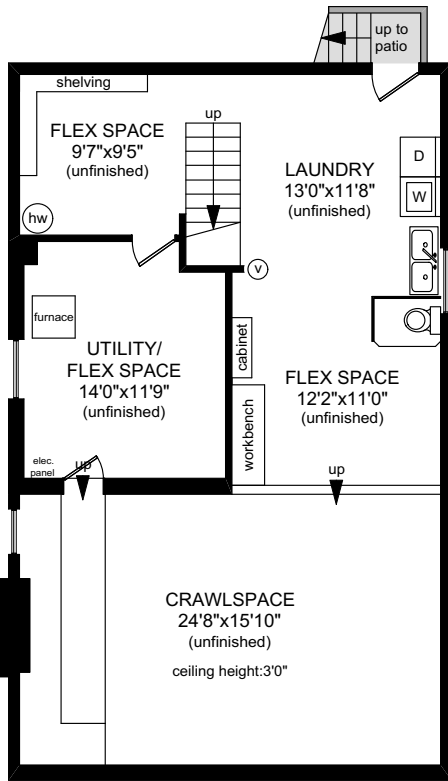
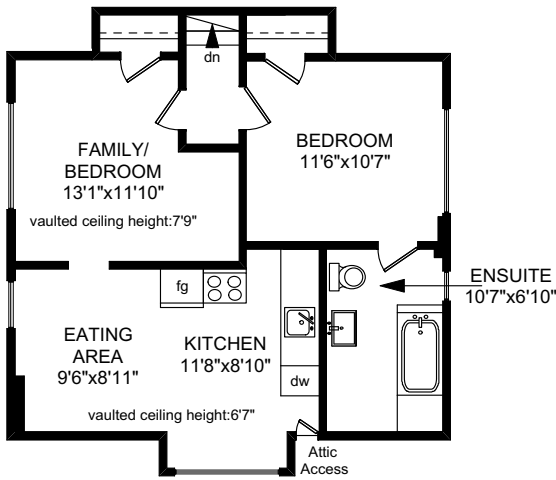
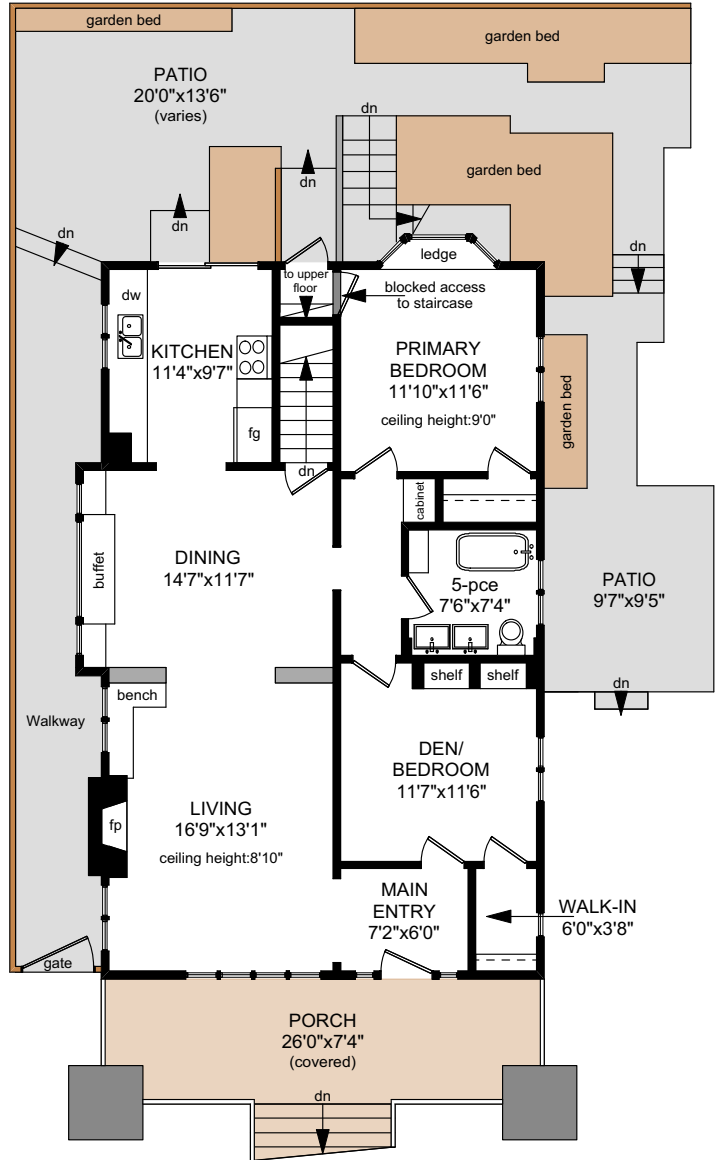


1321 POINT STREET

UPPER FLOOR 641 SQ.FT.

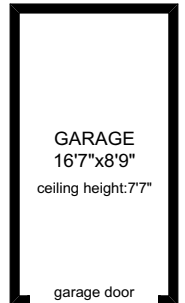


LOWER FLOOR 644 SQ.FT.



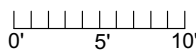
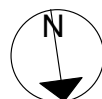
MAIN FLOOR 1124 SQ.FT.

Not shown in exact location



NOTE: The room name labels/sizes are for viewing reference only. They are not to be used for calculating total square footage.

	FINISHED SQ. FT.	UNFINISHED SQ. FT.	TOTAL SQ. FT.
MAIN	1124	0	1124
UPPER	641	0	641
LOWER	0	644	644
TOTAL	1765	644	2409
CRAWLSPACE	0	448	448
GARAGE	0	174	174
PORCH	0	175	175
PATIOS	0	460	460



PREPARED FOR THE EXCLUSIVE USE OF SYLVIA THERRIEN, PERSONAL REAL ESTATE CORPORATION, OF NEWPORT REALTY

MEASURED ON: 09/22/23
DRAWING FILE: 18722

Tafemeasure VICTORIA, B.C.
Ph.2508838894
www.tafemeasure.com

NOTE: This floor plan is provided by Newport Realty Ltd. as a convenient reference only, and is not to be relied upon as accurate. Prospective Buyers must satisfy themselves not only of the actual measurements, but also to the status of any finished space shown on this floor plan, specifically in relation to minimum ceiling height for habitable rooms required by the BC Building Code, allowable finished floor area in relation to current zoning, and determination if space was developed with necessary municipal permits.