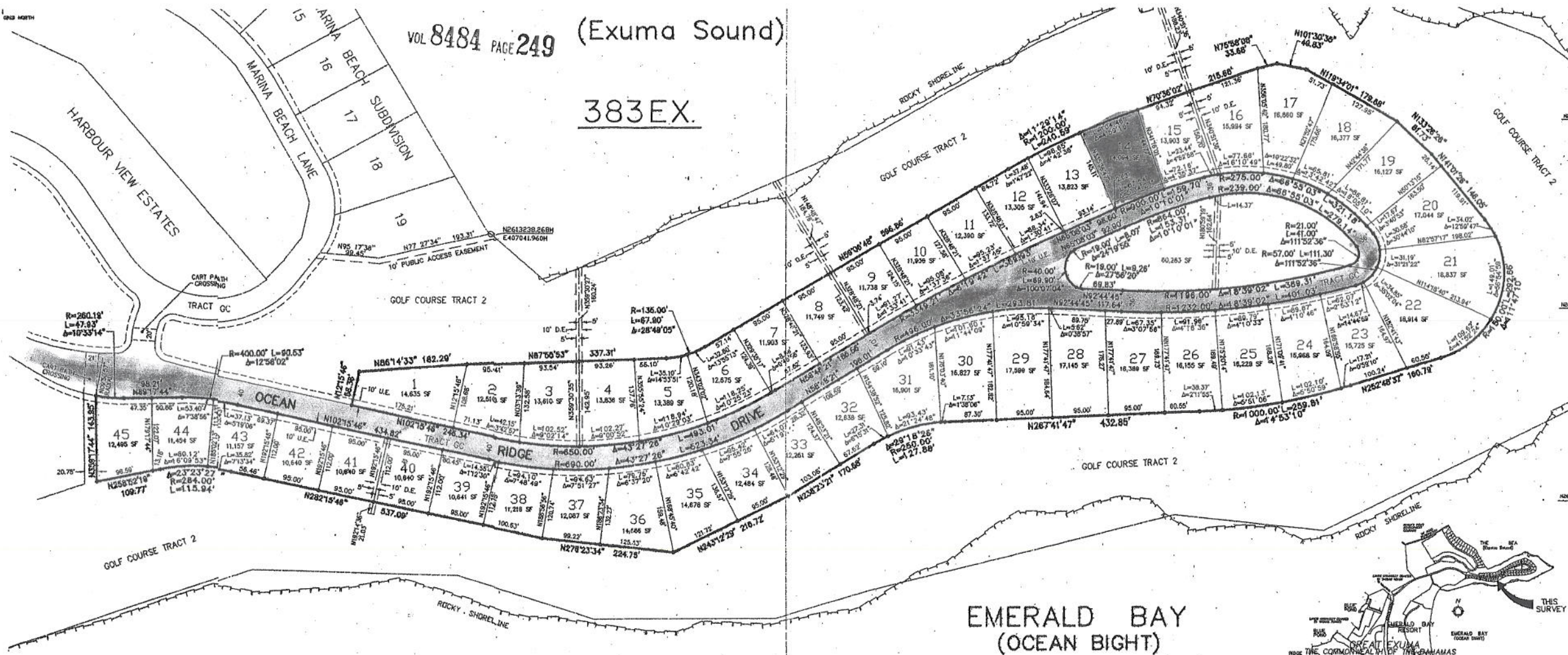
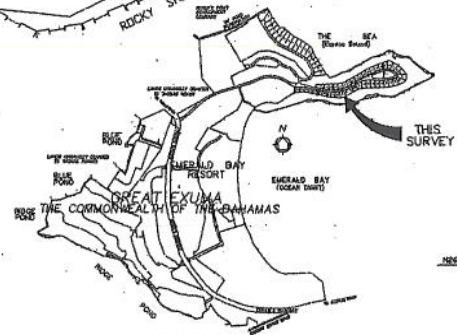


383EX.



EMERALD BAY (OCEAN BIGHT)



Checked by: *F. J. Williams*  
 Approved by: *Capit. A. Bennett*

Recorded in the Department of Lands & Surveys in accordance with Section 3 of the Land & Surveyors Act, 1975, as PLAN NO. 363 EXUMA. This 3rd. day of May, 2002.  
*Capit. A. Bennett*  
 Surveyor General *officio*.

CERTIFIED TO:  
 Emerald Bay Resort & Co.  
 EBR Properties Limited  
 First American Title Insurance Company  
 HVB Real Estate Capital Ltd.

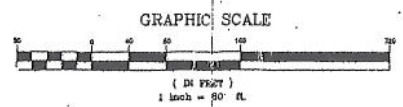
**SURVEYOR'S CERTIFICATE**  
 I, Donald E. Thompson a surveyor licensed & registered in the Bahamas hereby certify that this plan has been made from surveys executed by me or under my personal supervision, that both the plan & survey are correct & have been made in accordance with the Land Surveyor's Act, 1975, and the Land Surveyor's Regulations, 1975 made thereunder.

*D. E. Thompson*  
 Donald E. Thompson Reg. No. 037

# OCEAN RIDGE ESTATES SUBDIVISION

OCEAN BIGHT, FARMERS HILL  
 GREAT EXUMA - THE COMMONWEALTH OF THE BAHAMAS

Surveyed at the instance of Emerald Bay Resort & Company Date: December, 2001



**NOTES:**  
 Reference: D.L.S. plans No. 45 EX.  
 Grid Connection: D.L.S. plan No. 152 EX.  
 Survey monument set.....  
 Survey monument found.....

**THIS PLAN SUPERSEDES D.L.S. PLAN No. 363 EX.**  
 TOTAL AREA OF DEVELOPMENT 15.897 ACRES

**LEGEND:**  
 Δ = CENTRAL ANGLE  
 L = ARC LENGTH  
 R = RADIUS  
 SF = SQUARE FEET  
 C = CENTERLINE  
 D.E. = DRAINAGE EASEMENT  
 U.E. = UTILITY EASEMENT  
 N 2613163.778  
 E 406067.888 = U.T.M. GRID COORDINATES (METRIC)

SHEET 1 OF

**DONALD E. THOMPSON & ASSOCIATES**  
 Land Surveyors - Land Planners - Engineers  
 P.O. BOX N-9771 TEL. (242) 323-3014 Nassau, Bahamas  
 Surveyed by: D. E. THOMPSON  
 Plan by: Kendall Richardson