

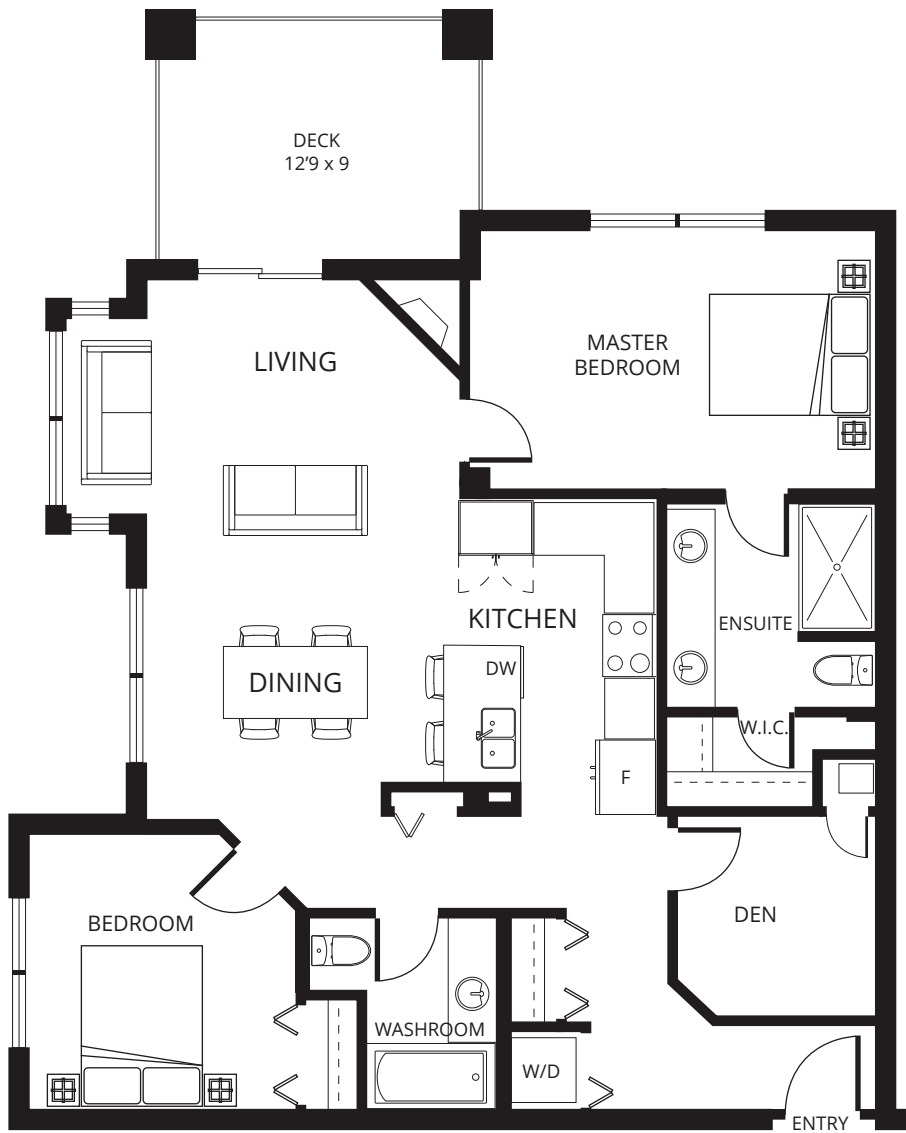
Skaha Lake Towers Phase 3

skahalaketowers.ca

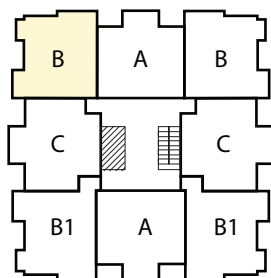
Plan B

1,177 sq.ft. 2 bedroom

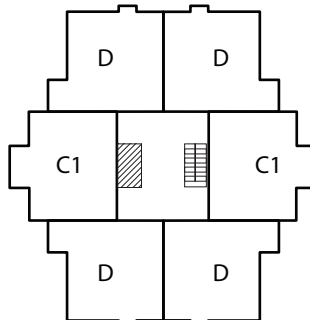
UNITS: 301 - 1001



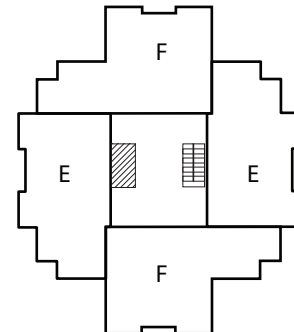
- Living: 15'9" x 9'4"
- Dining: 12' x 10'11"
- Kitchen: 12'6" x 8'4"
- Master: 15'11" x 10'3"
- Bedroom: 10'8" x 10'11"
- Den: 7'9" x 7'11"



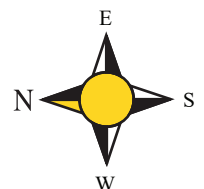
3rd to 10th Floor



11th and 12th Floor



13th and 14th Floor



Philip*, Diane*, Stephen* Fox
*Personal Real Estate Corporation

RE/MAX Penticton Realty
foxandfox@pentictonproperties.com

Toll Free: 1-800-652-6246
Phone: 250-492-2266

copyright 2022 Skaha Lake Towers

The developer reserves the right to make modifications and changes to plans, specifications and prices without notice. E.O.&E. Square Footage is approximate.

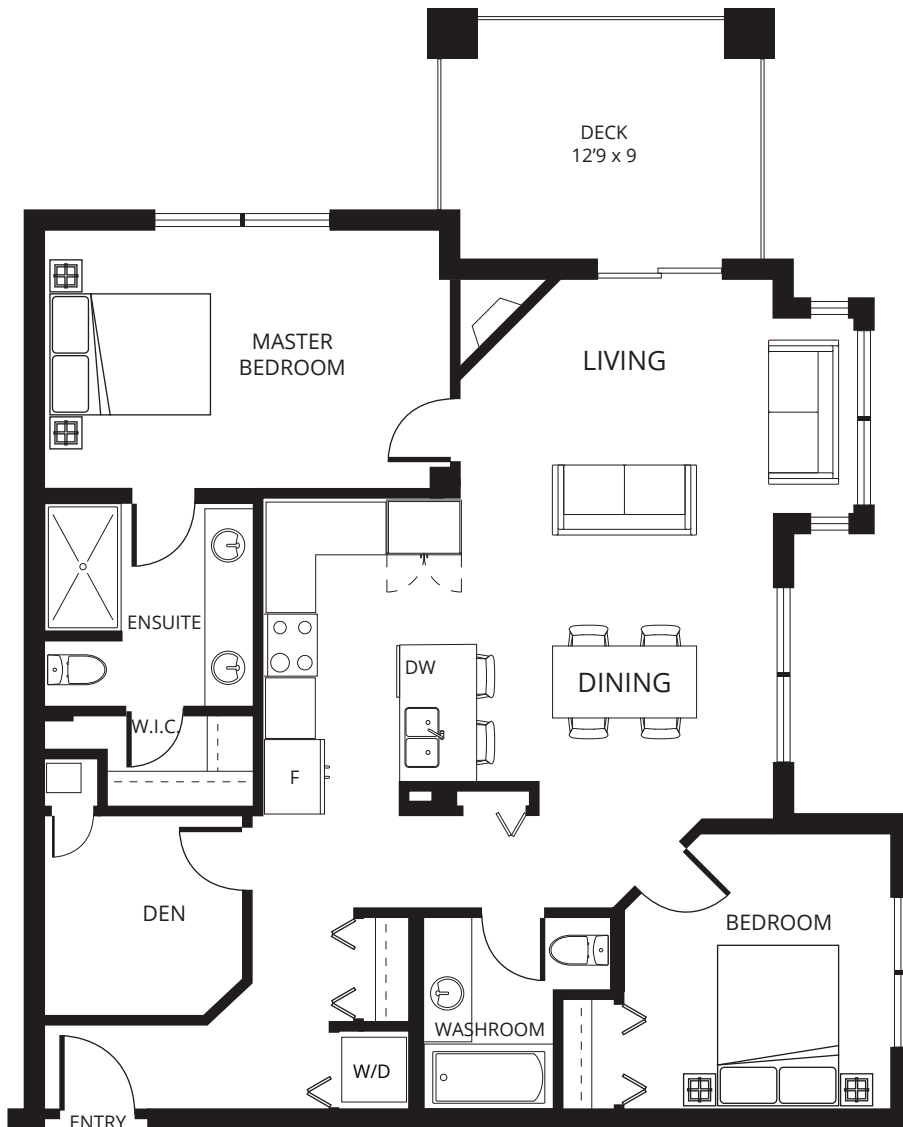
Skaha Lake Towers Phase 3

skahalaketowers.ca

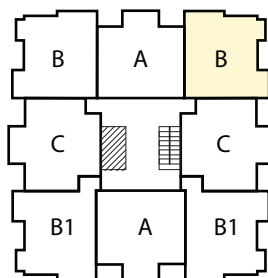
Plan B

1,177 sq.ft. 2 bedroom

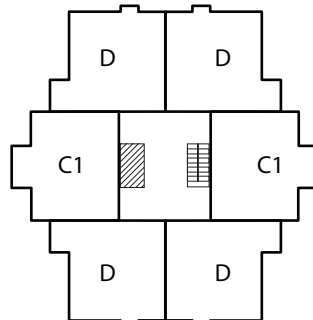
UNITS: 307 - 1007



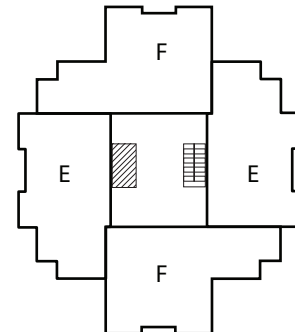
Living: 15'9" x 9'4"
 Dining: 12'x 10'11"
 Kitchen: 12'6" x 8'4"
 Master: 15'11" x 10'3"
 Bedroom: 10'8" x 10'11"
 Den: 7'9" x 7'11"



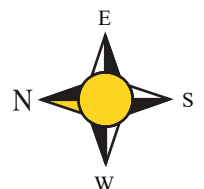
3rd to 10th Floor



11th and 12th Floor



13th and 14th Floor



Philip*, Diane*, Stephen* Fox
 *Personal Real Estate Corporation

RE/MAX Penticton Realty
 foxandfox@pentictonproperties.com

Toll Free: 1-800-652-6246
 Phone: 250-492-2266

copyright 2022 Skaha Lake Towers

The developer reserves the right to make modifications and changes to plans, specifications and prices without notice. E.O.&E. Square Footage is approximate.