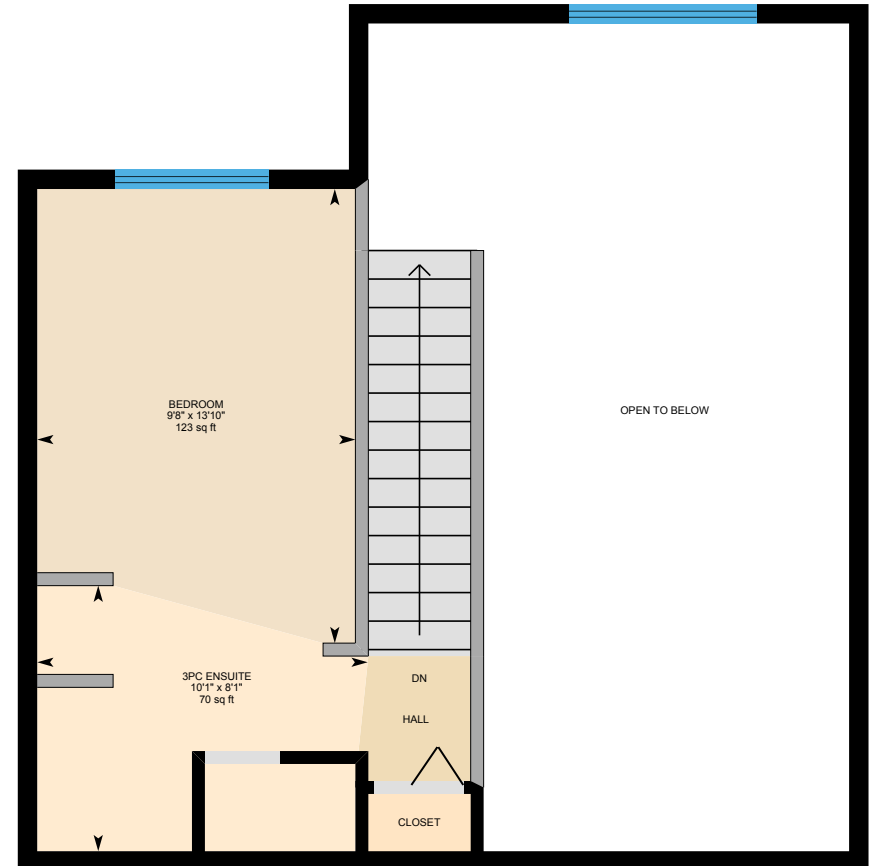


# 403-1140 Railway Ave, Canmore, AB

## Main Building



**Main Floor**  
Interior Area 632 sq ft

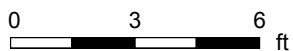


**2nd Floor**  
Interior Area 259 sq ft

0 3 6  
ft

# 403-1140 Railway Ave, Canmore, AB

Main Floor Total Interior Area 632 sq ft



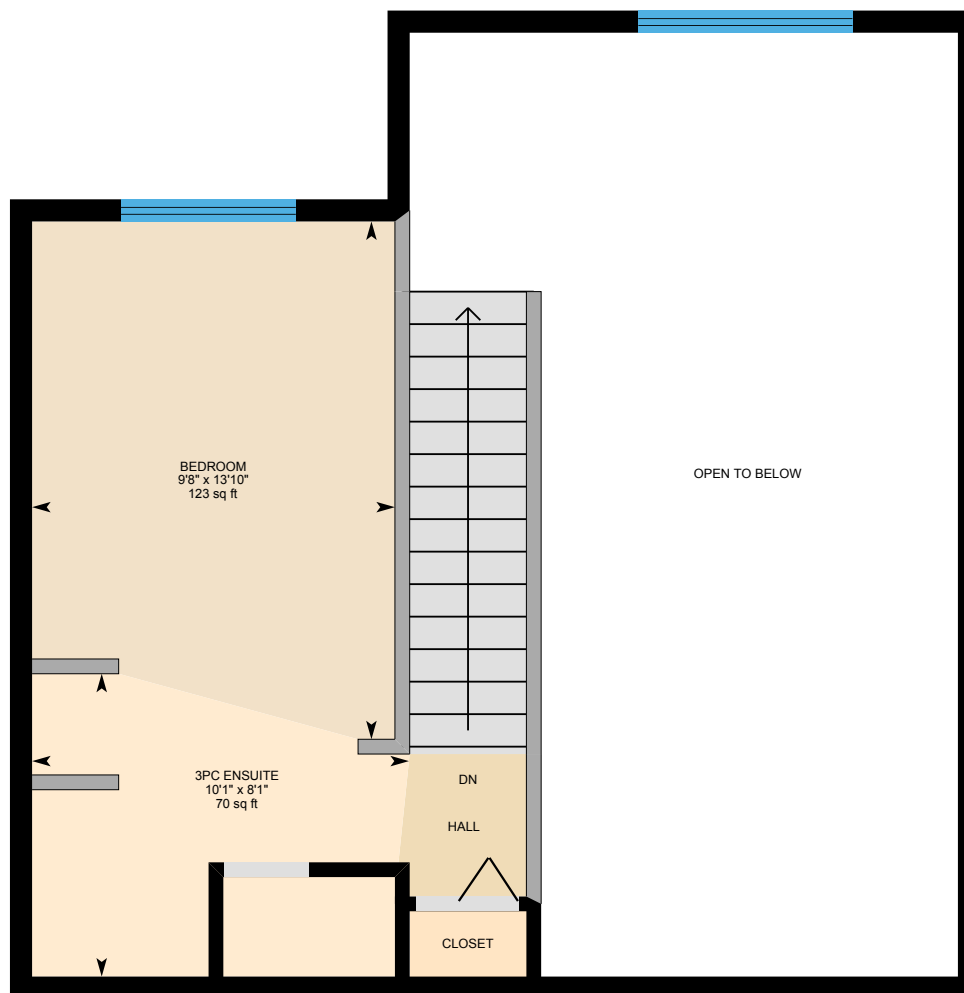
PREPARED: Aug, 2019



White regions are excluded from total floor area. All room dimensions and floor areas must be considered approximate and are subject to independent verification. For method of measurement please see <https://youriguide.com/measure/>.

# 403-1140 Railway Ave, Canmore, AB

2nd Floor Total Interior Area 259 sq ft



0 2 4 ft

PREPARED: Aug, 2019



White regions are excluded from total floor area. All room dimensions and floor areas must be considered approximate and are subject to independent verification. For method of measurement please see <https://youriguide.com/measure/>.

iGUIDE

# 403-1140 Railway Ave, Canmore, AB

## Property Details

### Room Measurements

Only major rooms are listed. Some listed rooms may be excluded from total interior floor area (e.g. garage). Room dimensions are largest length and width; parts of room may be smaller. Room area is not always equal to product of length and width.

#### Main Building

##### MAIN FLOOR

3pc Bath: 8'1" x 4'11" | 37 sq ft  
Bedroom: 9'10" x 14'5" | 127 sq ft  
Dining: 11'4" x 9'2" | 104 sq ft  
Kitchen: 7'9" x 8'7" | 66 sq ft  
Living: 14'9" x 11'5" | 168 sq ft

##### 2ND FLOOR

3pc Ensuite: 10'1" x 8'1" | 70 sq ft  
Bedroom: 9'8" x 13'10" | 123 sq ft

Customer Name: Rhonda Alksne  
Customer Company: REMAX Alpine Realty  
Prepared: Aug 14, 2019

The Total Above Grade Floor Area is the RMS size of the property. Use Exterior Area for detached properties and Interior Area for properties with common walls, such as half-duplexes, townhouses, and apartments.

The newly required schematics from CREB, as well as supplement measurement sheet are part of your PDF Floorplan download.

This property was measured by CMC Photography and Measure Services.

### Floor Area Information

For explanation of floor area calculations and method of measurement please see <https://youriguide.com/measure/>.

#### Main Building

##### MAIN FLOOR

Interior Area: 632 sq ft  
Perimeter Wall Length: 112 ft

##### 2ND FLOOR

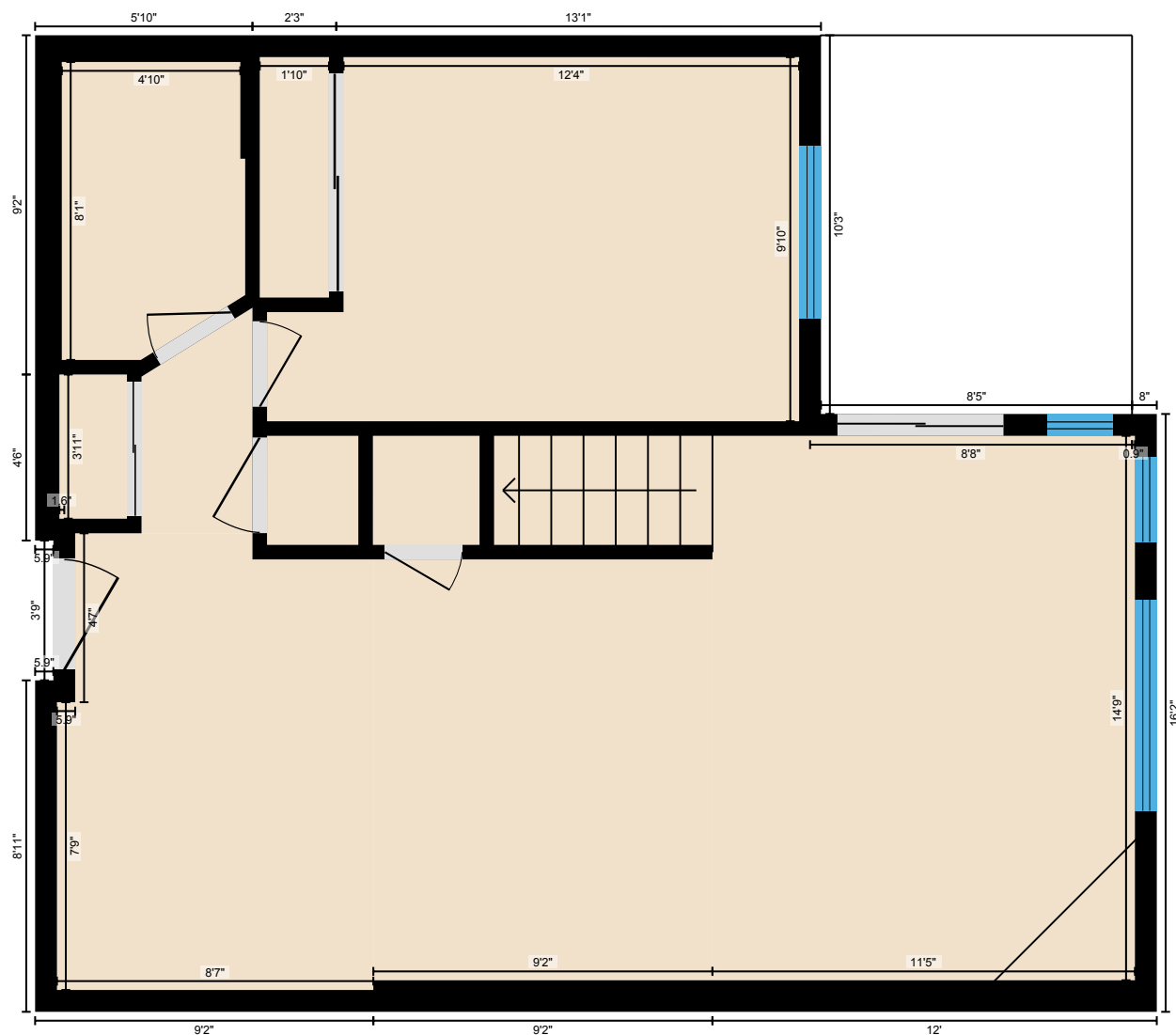
Interior Area: 259 sq ft  
Perimeter Wall Length: 69 ft

#### Total Above Grade Floor Area

Main Building Interior: 891 sq ft

# 403-1140 Railway Ave, Canmore, AB

Measurement Diagram for: Main Floor

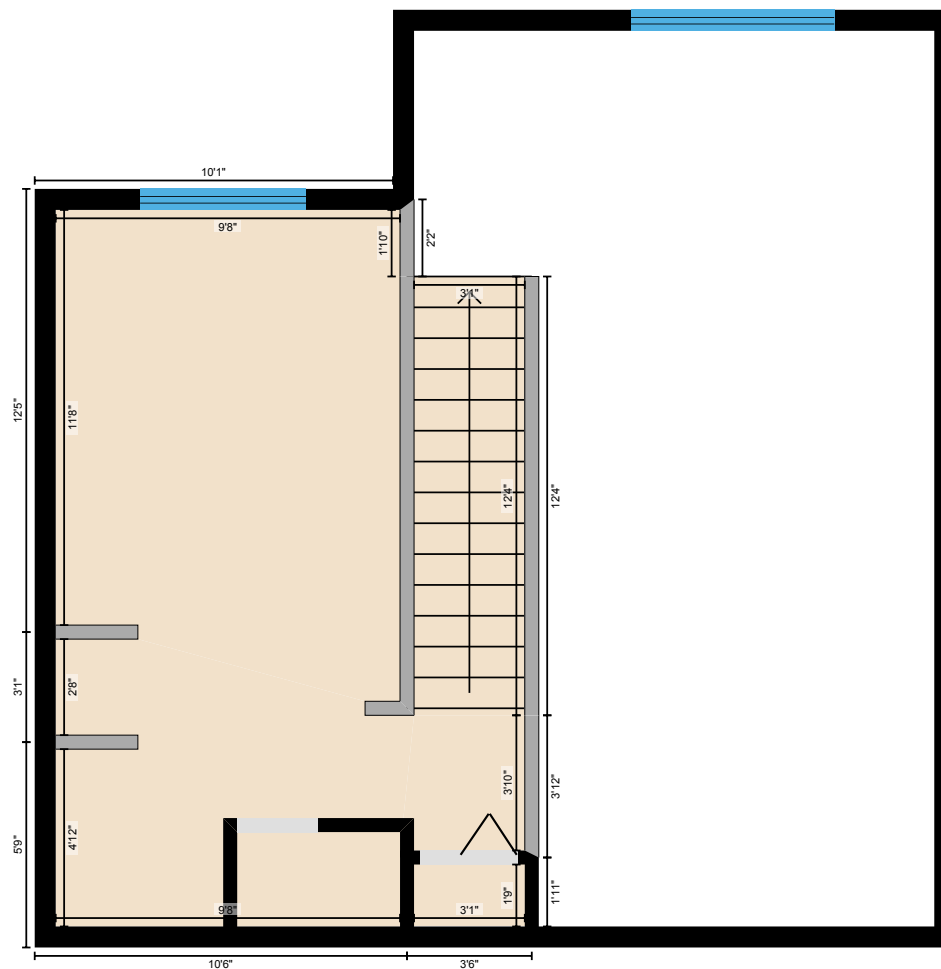


PREPARED: Aug, 2019

White regions are excluded from total floor area. All room dimensions and floor areas must be considered approximate and are subject to independent verification. For method of measurement please see <https://youriguide.com/measure/>.

**403-1140 Railway Ave, Canmore, AB**

Measurement Diagram for: 2nd Floor



PREPARED: Aug, 2019

White regions are excluded from total floor area. All room dimensions and floor areas must be considered approximate and are subject to independent verification. For method of measurement please see <https://youriguide.com/measure/>.