

2111 PANORAMA DRIVE

RESIDENTIAL STANDARD, ANS/BOMA Z65.4 (2010) - Panorama Mountain Resort, BC
 MAIN LEVEL (AG) - 1423.43 Sq.Ft. / 132.24 m²
 UPPER LEVEL (AG) - 827.53 Sq.Ft. / 76.88 m²
 LOFT (AG) - 80.67 Sq.Ft. / 7.49 m²
 BASEMENT (BG) - 1438.47 Sq.Ft. / 133.63 m²
 TOTAL PROPERTY SIZE - 3770.10 Sq.Ft. / 350.24 m²

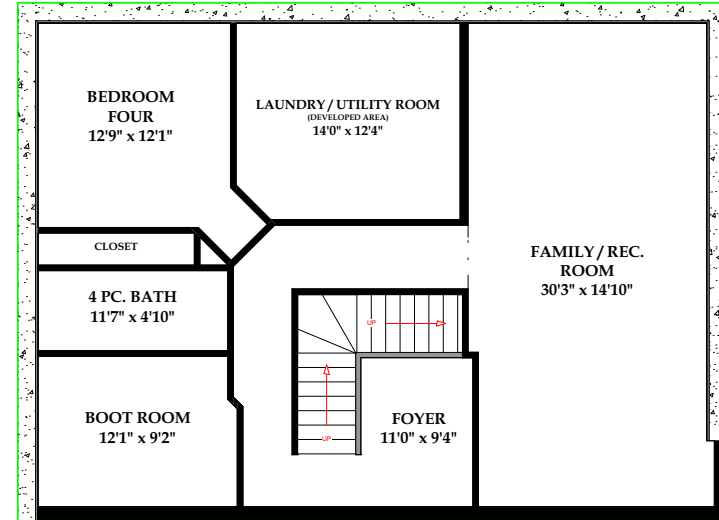
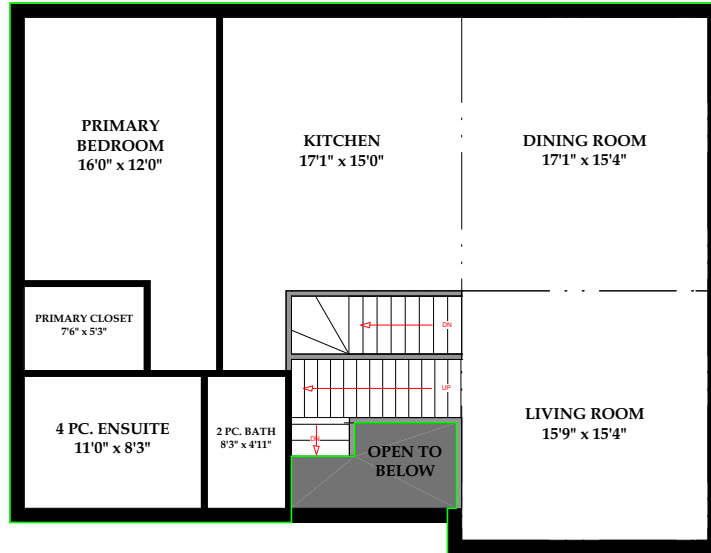
DATE COMPLETED: NOVEMBER 18, 2022
 PROPERTY TYPE: DETACHED
 KEVIN THYGESEN / REMAX INVERMERE



info@urbanmeasure.com
 Calgary | Edmonton, AB
 403.827.4420 | 587.598.4420
 Toll Free : 1.844.504.4420

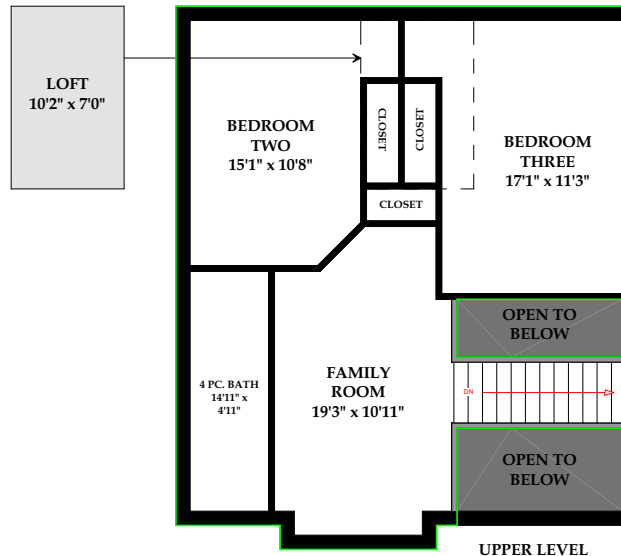


MAIN LEVEL

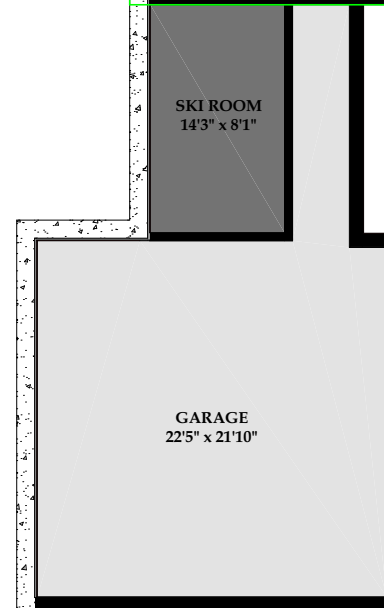


BASEMENT

PEAK VAULT HEIGHT = 15'8"



UPPER LEVEL



The Schematic Drawing shows the following depending on the style of property:
 For Attached Properties and Condominiums the measurements represented above are Interior Measurements in accordance with Principle 4 of the RMS
 Detached Properties the measurements represented above are Exterior Foundation Surface Measurements in accordance with Principle 3 of the RMS

RMS MEASURING | FLOOR PLANS | PHOTOS | VIDEOS | AERIAL | MATTERPORT 3D | RENDERINGS | VIRTUAL STAGING

Disclaimer: All total Sq.Ft. measurements completed and insured by UrbanMeasure Inc. using the RMS Guide as prepared by RECA. Measurement Insurance provided is to be considered void without payment and/or altered in anyway. Total Sq.Ft. measurements are based on the area within the allowed perimeter of the home or condo, not by multiplying room sizes. They DO NOT include decks, patios, garages, vaulted "open to below" areas, plant ledge windows, areas with floor to ceiling heights below five feet, and fireplace cantilevers. For more information on the residential measurement standard (RMS) please visit: <https://www.reca.ca>