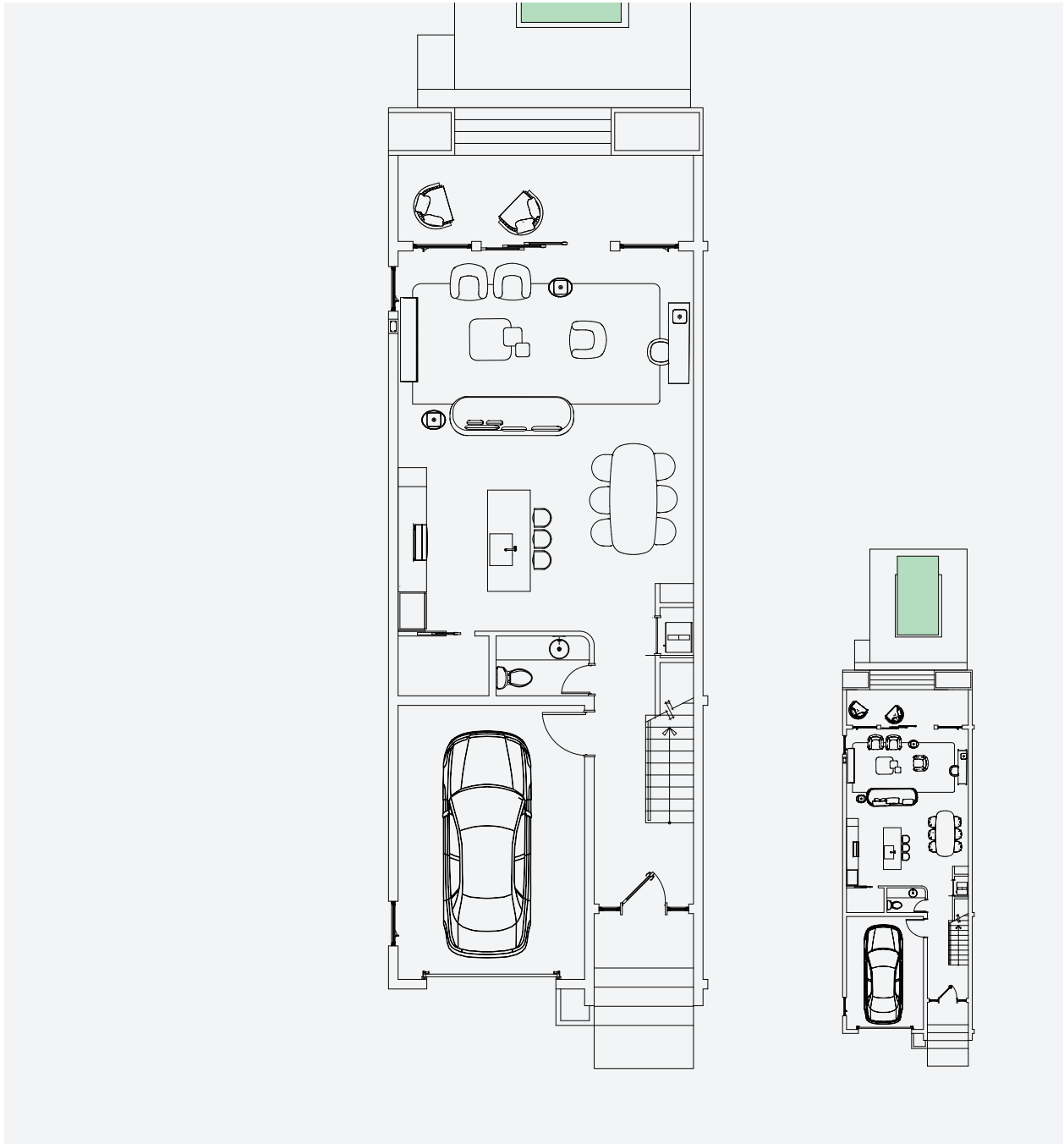


WESTEND

Love Beach Bahamas



GROUND FLOOR: FROM 728 SQ. FT.

Dimensions and areas are approximate and subject to change without notice. The furniture is shown as an example only. The gross area indicated includes half the common walls, the exterior wall and the corridor wall.

3-BEDROOM SIGNATURE TOWNHOME

F1 - Ground floor

FROM
1,774 sq. ft
165 sq. m.

KITCHEN
13' - 4" X 9' - 2"

DINING
11' - 4" X 10' - 2"

LIVING
20' - 7" X 13'

HALF BATH
7' X 3' - 6"

GARAGE
13' - 1" X 18' - 1"

TERRACE
22' X 8'

OUTDOOR POOL
9' X 11'

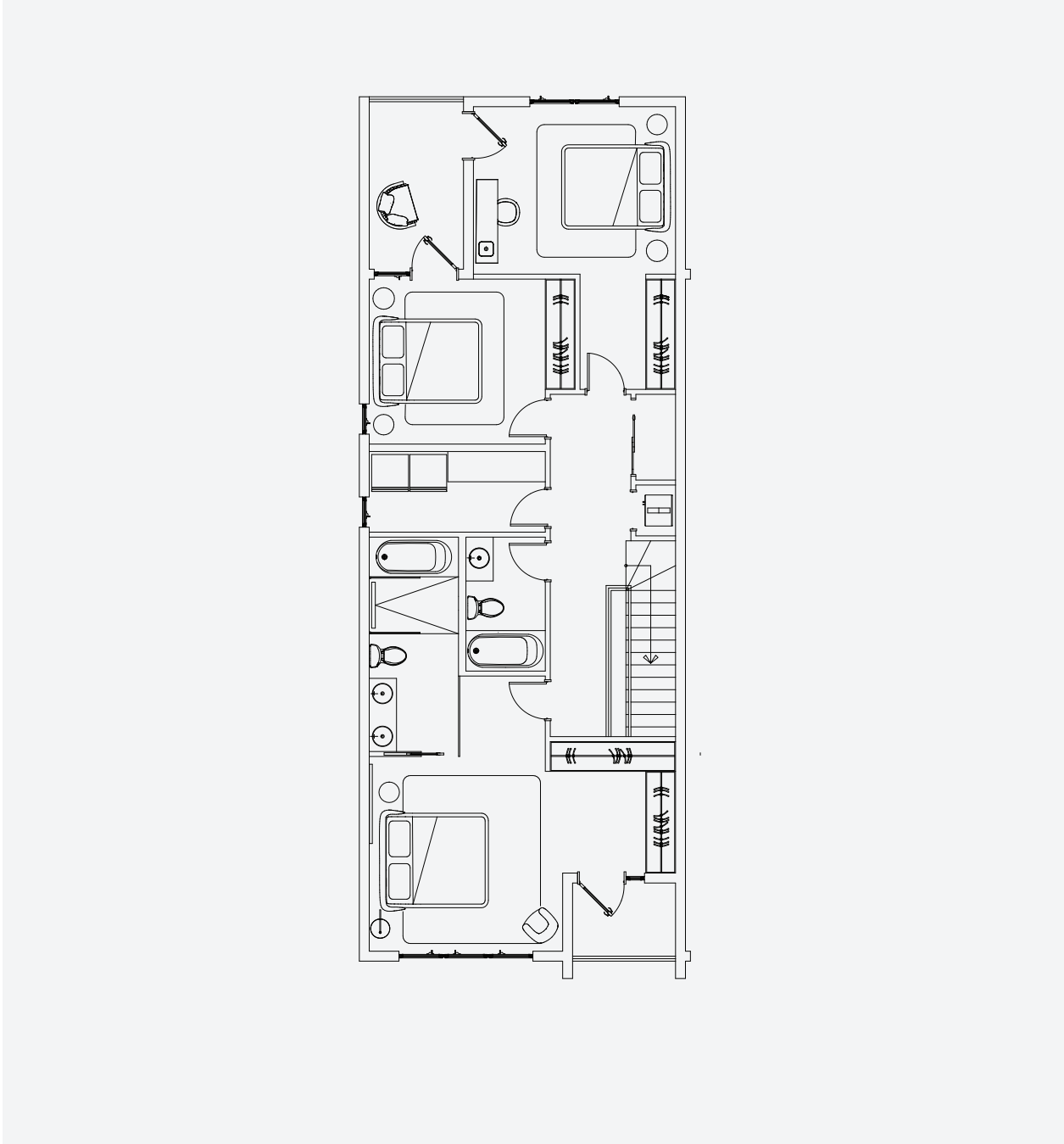


WOULD YOU LIKE TO OWN A WESTEND RESIDENCE?

+1-242-802-4419 info@westendnassau.com westendnassau.com

WESTEND

Love Beach Bahamas



UPPER FLOOR: FROM 1,046 SQ. FT.

Dimensions and areas are approximate and subject to change without notice. The furniture is shown as an example only. The gross area indicated includes half the common walls, the exterior wall and the corridor wall.

3-BEDROOM SIGNATURE TOWNHOME

F1 - Upper floor

FROM
1,774 sq. ft
165 sq. m.

MASTER BEDROOM
21' X 13'

MASTER BATH
14' - 4" X 6'

BALCONY
6' - 11" X 5' - 3"

BEDROOM 2
11' - 6" X 11' - 1"

BATH 2
5' - 4" X 9'

BEDROOM 3
13' - 7" X 11' - 3"

BALCONY (REAR)
7' X 11' - 7"



WOULD YOU LIKE TO OWN A WESTEND RESIDENCE?

+1-242-802-4419 info@westendnassau.com westendnassau.com