

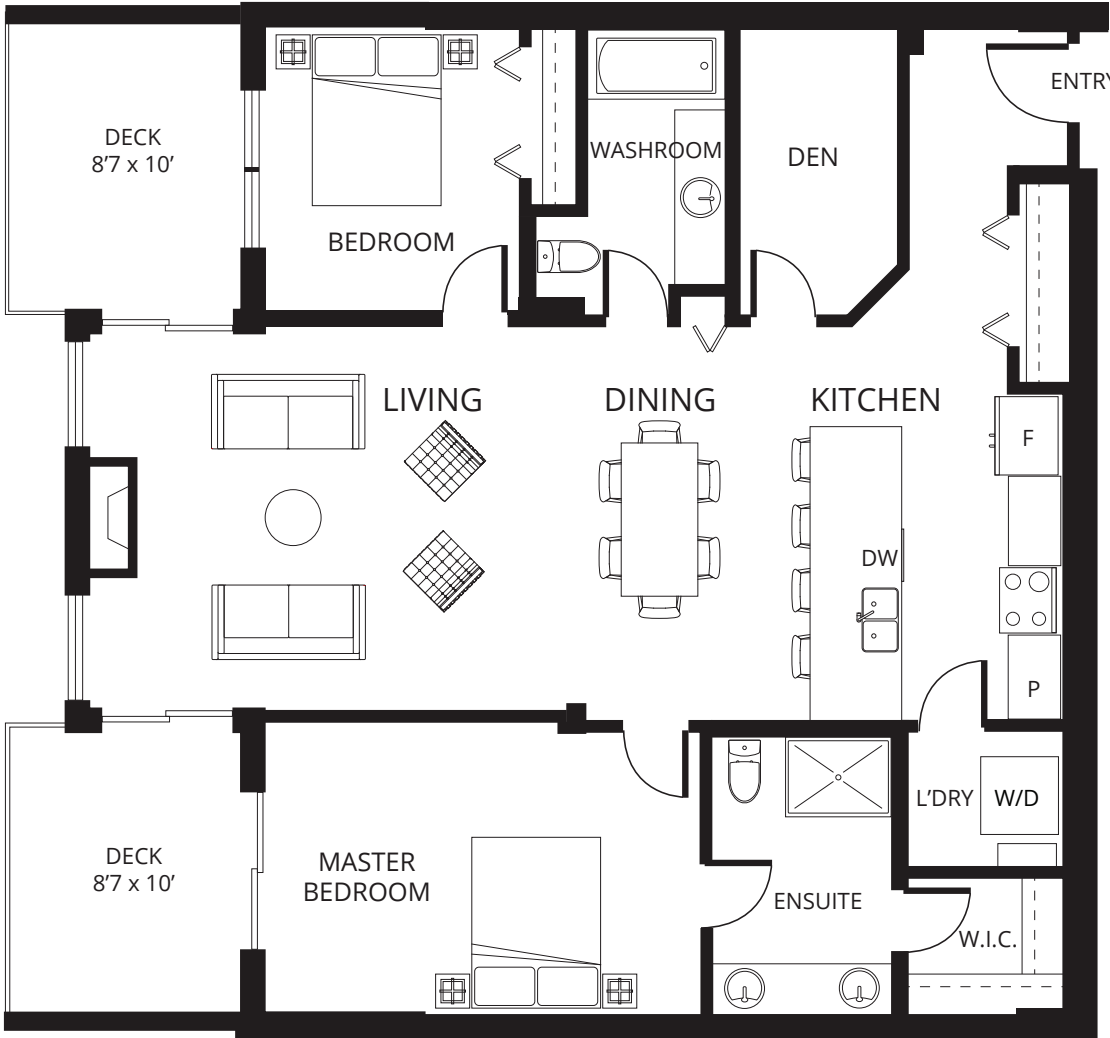
Skaha Lake Towers Phase 3

skahalaketowers.ca

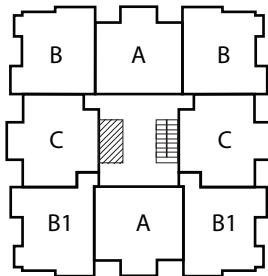
Plan C1

11th Floor 1,341 sq.ft. 2 bedroom

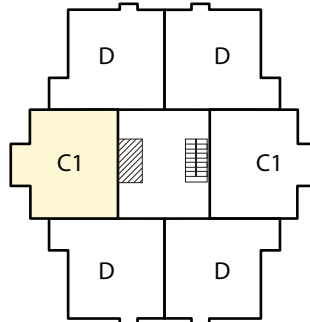
UNITS: 1102 & 1202



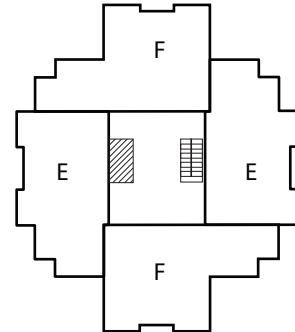
- Living: 14'4 x 14'4
- Dining: 12'9 x 14'2
- Kitchen: 9'5 x 12'6
- Master: 11'2 x 11'
- Bedroom: 9'5 x 10'11
- Den: 6'2 x 11'2



3rd to 10th Floor



11th and 12th Floor



13th and 14th Floor



Philip*, Diane*, Stephen* Fox
*Personal Real Estate Corporation

RE/MAX Penticton Realty
foxandfox@pentictonproperties.com

Toll Free: 1-800-652-6246
Phone: 250-492-2266

copyright 2022 Skaha Lake Towers

The developer reserves the right to make modifications and changes to plans, specifications and prices without notice. E.O.&E. Square Footage is approximate.

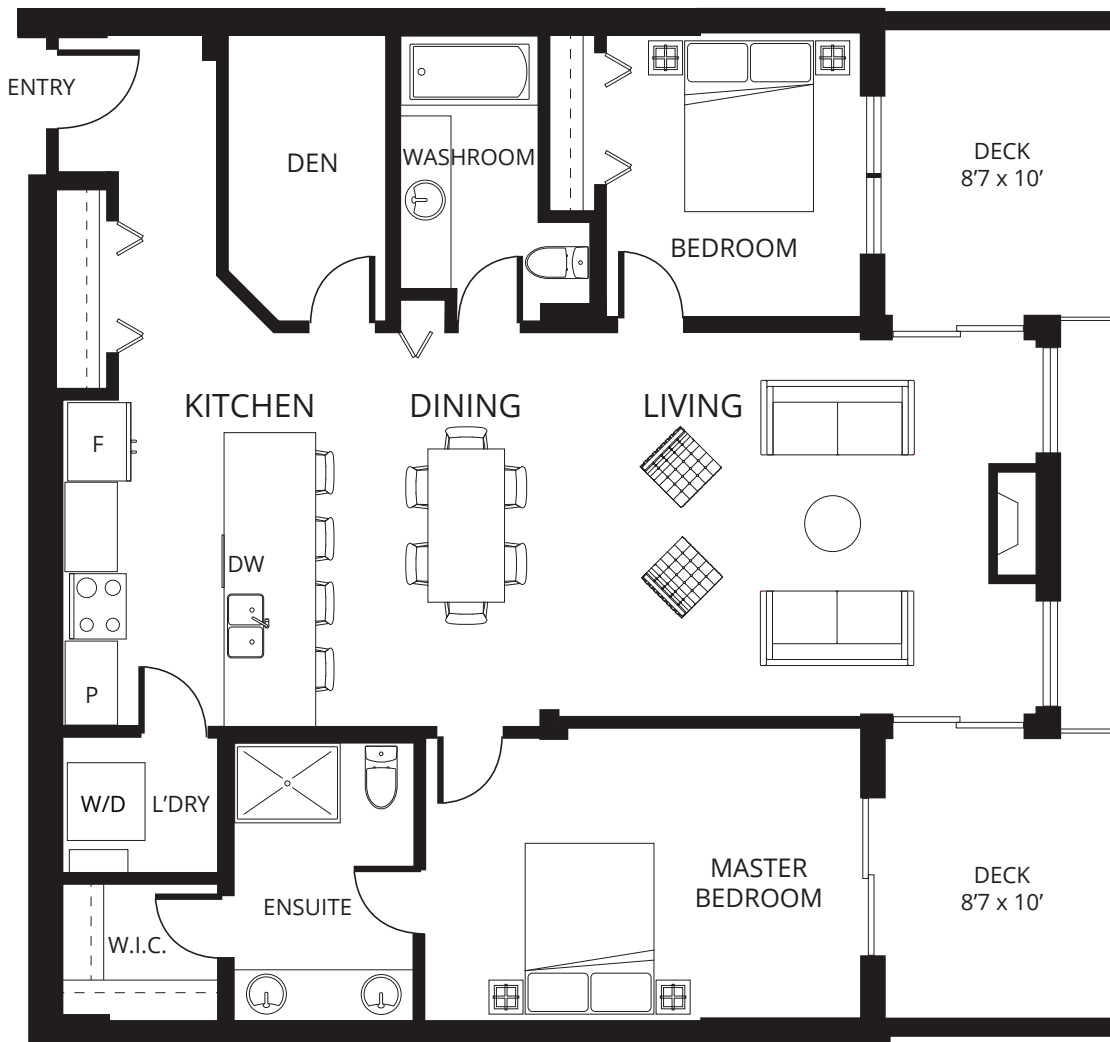
Skaha Lake Towers Phase 3

skahalaketowers.ca

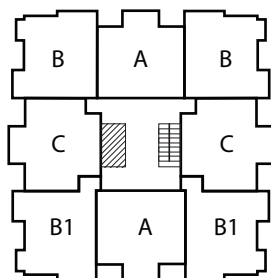
Plan C1

11th Floor 1,341 sq.ft. 2 bedroom

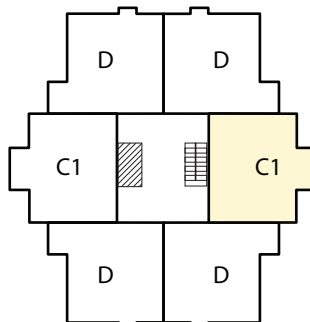
UNITS: 1105 & 1205



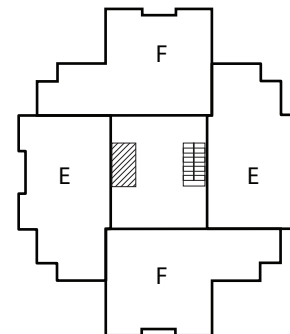
Living: 14'4 x 14'4
 Dining: 12'9 x 14'2
 Kitchen: 9'5 x 12'6
 Master: 11'2 x 11'
 Bedroom: 9'5 x 10'11
 Den: 6'2 x 11'2



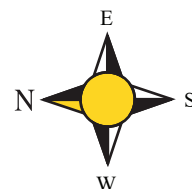
3rd to 10th Floor



11th and 12th Floor



13th and 14th Floor



Philip*, Diane*, Stephen* Fox
 *Personal Real Estate Corporation

RE/MAX Penticton Realty
 foxandfox@pentictonproperties.com

Toll Free: 1-800-652-6246
 Phone: 250-492-2266

copyright 2022 Skaha Lake Towers

The developer reserves the right to make modifications and changes to plans, specifications and prices without notice. E.O.&E. Square Footage is approximate.